

# **ANADARKO PETROLEUM CORP.**

**ANADARKO COLORADO NORTHERN ZONE NAD 83**

**WELD\_HOBART 8-67-1-4H**

**P\_HOBART 8-67-1-14H**

**P\_HOBART 8-67-1-14H(600' FNL 600' FWL)**

**Plan: PLAN #2 4-22-10 RHS**

## **Standard Planning Report**

**06 May, 2010**

Project: ANADARKO COLORADO NOTHERN ZONE NAD 83  
 Site: WELD\_HOBART 8-67-1-4H  
 Well: P\_HOBART 8-67-1-14H  
 Wellbore: P\_HOBART 8-67-1-14H(600' FNL 600' FWL)  
 Design: PLAN #2 4-22-10 RHS  
 Latitude: 40° 41' 41.399 N  
 Longitude: 104° 50' 47.612 W  
 GL: 5329.00  
 KB: KB @ 5347.00ft (Original Well Elev)

#### WELLBORE TARGET DETAILS (LAT/LONG)

Name	TVD	+N/-S	+E/-W	Latitude	Longitude	Shape
PBHL	7267.00	-3628.35	4050.00	40° 41' 5.543 N	104° 49' 55.042 W	Point

#### WELL DETAILS: P\_HOBART 8-67-1-14H

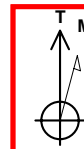
+N/-S	+E/-W	Northing	Ground Level: Easting	5329.00 Latitude	Longitude	Slot
0.00	0.00	1496638.69	3181196.94	40° 41' 41.399 N	104° 50' 47.612 W	

#### SECTION DETAILS

MD	Inc	Azi	TVD	+N/-S	+E/-W	DLeg	TFace	VSec	Annotation
0.00	0.00	0.00	0.00	0.00	0.00	0.00	0.00	0.00	
1100.00	0.00	0.00	1100.00	0.00	0.00	0.00	0.00	0.00	Start Build 2.00(600 FNL 600 FWL)
1350.00	5.00	311.83	1349.68	7.27	-8.12	2.00	311.83	-10.90	Start 5499.21 hold at 1350.00 MD
6849.21	5.00	311.83	6827.97	326.92	-365.25	0.00	0.00	-490.19	Start DLS 12.00 TFO -179.98
7647.89	90.84	131.85	7347.00	4.85	-5.76	12.00	-179.98	-7.53	Start 5445.71 hold at 7647.89 MD(595 FNL 594 FWL)
13093.60	90.84	131.85	7267.00	-3628.35	4050.00	0.00	0.00	5437.59	TD at 13093.60

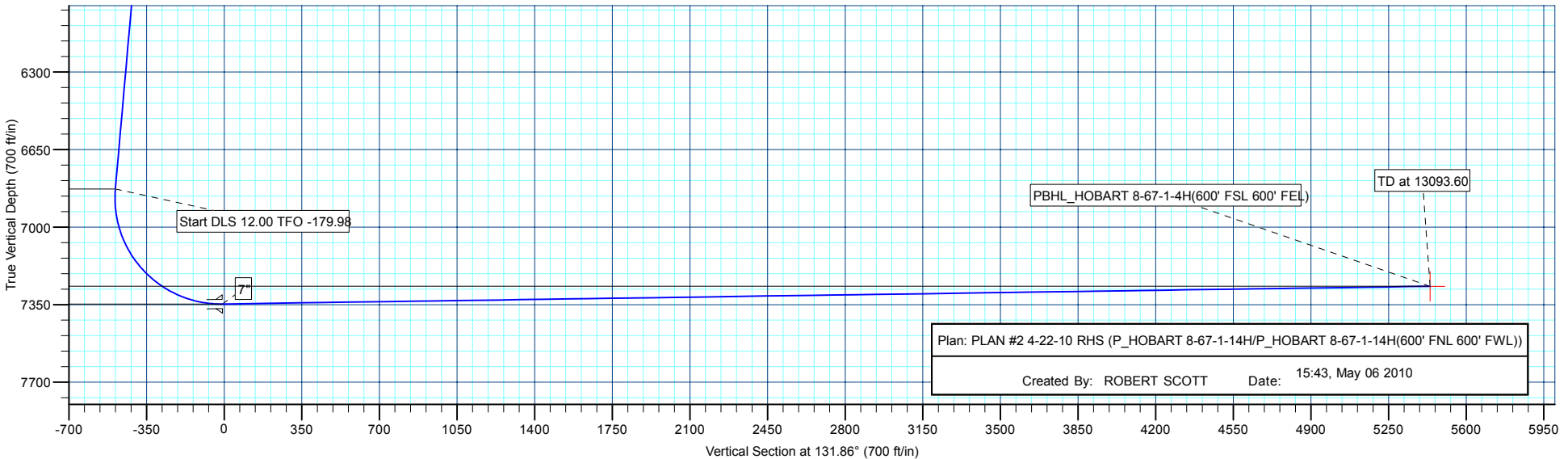
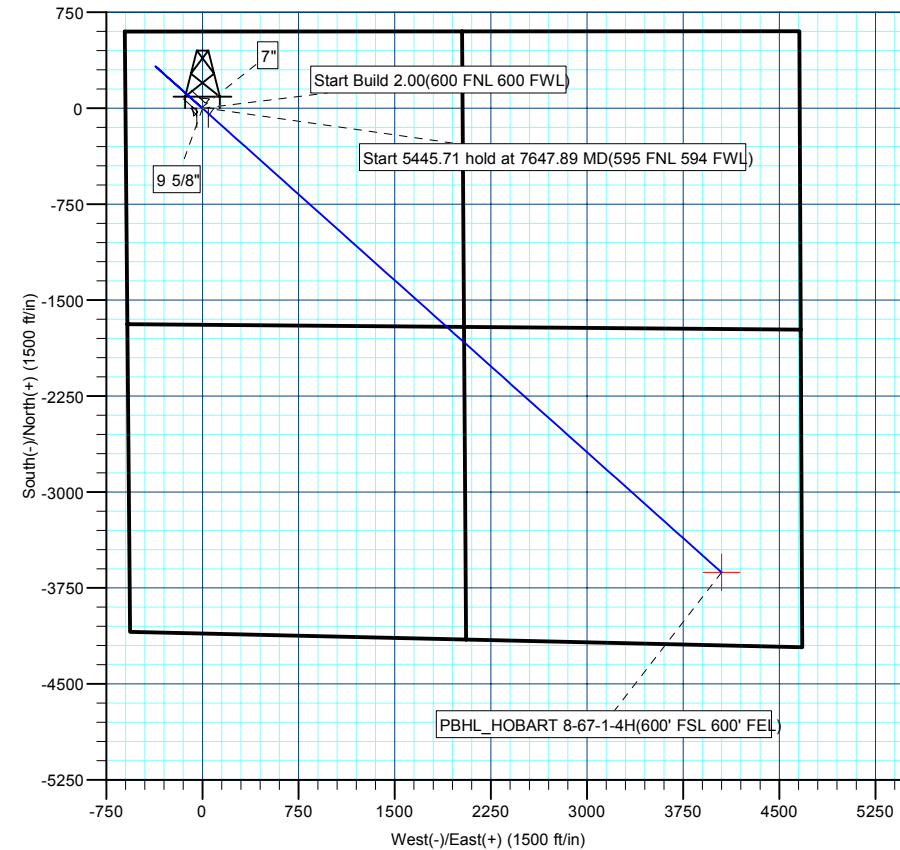
#### CASING DETAILS

TVD	MD	Name	Size
1000.00	1000.00	9 5/8"	9.62
7347.00	7647.89	7"	7.00



Azimuths to True North  
 Magnetic North: 9.09°

Magnetic Field  
 Strength: 53393.7nT  
 Dip Angle: 67.31°  
 Date: 4/22/2010  
 Model: IGRF2010



Plan: PLAN #2 4-22-10 RHS (P\_HOBART 8-67-1-14H/P\_HOBART 8-67-1-14H(600' FNL 600' FWL))

Created By: ROBERT SCOTT Date: 15:43, May 06 2010

<b>Database:</b>	EDM 2003.21 Single User Db	<b>Local Co-ordinate Reference:</b>	Well P_HOBART 8-67-1-14H
<b>Company:</b>	ANADARKO PETROLEUM CORP.	<b>TVD Reference:</b>	KB @ 5347.00ft (Original Well Elev)
<b>Project:</b>	ANADARKO COLORADO NOTHERN ZONE NAD 83	<b>MD Reference:</b>	KB @ 5347.00ft (Original Well Elev)
<b>Site:</b>	WELD_HOBART 8-67-1-4H	<b>North Reference:</b>	True
<b>Well:</b>	P_HOBART 8-67-1-14H	<b>Survey Calculation Method:</b>	Minimum Curvature
<b>Wellbore:</b>	P_HOBART 8-67-1-14H(600' FNL 600' FWL)		
<b>Design:</b>	PLAN #2 4-22-10 RHS		

<b>Project</b>	ANADARKO COLORADO NOTHERN ZONE NAD 83, ROCKIES, ROCKIES		
<b>Map System:</b>	US State Plane 1983	<b>System Datum:</b>	Mean Sea Level
<b>Geo Datum:</b>	North American Datum 1983		
<b>Map Zone:</b>	Colorado Northern Zone		

<b>Site</b>	WELD_HOBART 8-67-1-4H, SECTION 1 T8N R67 W		
<b>Site Position:</b>		<b>Northing:</b>	1,496,638.69 ft
<b>From:</b>	Lat/Long	<b>Easting:</b>	3,181,196.94 ft
<b>Position Uncertainty:</b>	0.00 ft	<b>Slot Radius:</b>	in
		<b>Latitude:</b>	40° 41' 41.399 N
		<b>Longitude:</b>	104° 50' 47.612 W
		<b>Grid Convergence:</b>	0.42 °

<b>Well</b>	P_HOBART 8-67-1-14H		
<b>Well Position</b>	<b>+N/-S</b>	0.00 ft	<b>Northing:</b> 1,496,638.69 ft
	<b>+E/-W</b>	0.00 ft	<b>Easting:</b> 3,181,196.94 ft
<b>Position Uncertainty</b>	0.00 ft	<b>Wellhead Elevation:</b>	ft
		<b>Latitude:</b>	40° 41' 41.399 N
		<b>Longitude:</b>	104° 50' 47.612 W
		<b>Ground Level:</b>	5,329.00 ft

<b>Wellbore</b>	P_HOBART 8-67-1-14H(600' FNL 600' FWL)				
<b>Magnetics</b>	<b>Model Name</b>	<b>Sample Date</b>	<b>Declination (°)</b>	<b>Dip Angle (°)</b>	<b>Field Strength (nT)</b>
	IGRF2010	4/22/2010	9.09	67.32	53,394

<b>Design</b>	PLAN #2 4-22-10 RHS			
<b>Audit Notes:</b>				
<b>Version:</b>	<b>Phase:</b>	PLAN	<b>Tie On Depth:</b>	0.00
<b>Vertical Section:</b>	<b>Depth From (TVD) (ft)</b>	<b>+N/-S (ft)</b>	<b>+E/-W (ft)</b>	<b>Direction (°)</b>
	0.00	0.00	0.00	131.86

<b>Plan Sections</b>										
Measured Depth (ft)	Inclination (°)	Azimuth (°)	Vertical Depth (ft)	+N/-S (ft)	+E/-W (ft)	Dogleg Rate (°/100ft)	Build Rate (°/100ft)	Turn Rate (°/100ft)	TFO (°)	Target
0.00	0.00	0.00	0.00	0.00	0.00	0.00	0.00	0.00	0.00	
1,100.00	0.00	0.00	1,100.00	0.00	0.00	0.00	0.00	0.00	0.00	
1,350.00	5.00	311.83	1,349.68	7.27	-8.12	2.00	2.00	0.00	311.83	
6,849.21	5.00	311.83	6,827.97	326.92	-365.25	0.00	0.00	0.00	0.00	
7,647.89	90.84	131.85	7,347.00	4.85	-5.76	12.00	10.75	-22.53	-179.98	
13,093.60	90.84	131.85	7,267.00	-3,628.35	4,050.00	0.00	0.00	0.00	0.00	PBHL_HOBART 8-4

<b>Database:</b>	EDM 2003.21 Single User Db	<b>Local Co-ordinate Reference:</b>	Well P_HOBART 8-67-1-14H
<b>Company:</b>	ANADARKO PETROLEUM CORP.	<b>TVD Reference:</b>	KB @ 5347.00ft (Original Well Elev)
<b>Project:</b>	ANADARKO COLORADO NOTHERN ZONE NAD 83	<b>MD Reference:</b>	KB @ 5347.00ft (Original Well Elev)
<b>Site:</b>	WELD_HOBART 8-67-1-4H	<b>North Reference:</b>	True
<b>Well:</b>	P_HOBART 8-67-1-14H	<b>Survey Calculation Method:</b>	Minimum Curvature
<b>Wellbore:</b>	P_HOBART 8-67-1-14H(600' FNL 600' FWL)		
<b>Design:</b>	PLAN #2 4-22-10 RHS		

**Planned Survey**

Measured Depth (ft)	Inclination (°)	Azimuth (°)	Vertical Depth (ft)	+N/-S (ft)	+E/-W (ft)	Vertical Section (ft)	Dogleg Rate (°/100ft)	Build Rate (°/100ft)	Turn Rate (°/100ft)
<b>Start Build 2.00(600 FNL 600 FWL)</b>									
1,100.00	0.00	0.00	1,100.00	0.00	0.00	0.00	0.00	0.00	0.00
1,200.00	2.00	311.83	1,199.98	1.16	-1.30	-1.75	2.00	2.00	0.00
1,300.00	4.00	311.83	1,299.84	4.65	-5.20	-6.98	2.00	2.00	0.00
<b>Start 5499.21 hold at 1350.00 MD</b>									
1,350.00	5.00	311.83	1,349.68	7.27	-8.12	-10.90	2.00	2.00	0.00
1,400.00	5.00	311.83	1,399.49	10.18	-11.37	-15.26	0.00	0.00	0.00
1,500.00	5.00	311.83	1,499.11	15.99	-17.86	-23.97	0.00	0.00	0.00
1,600.00	5.00	311.83	1,598.73	21.80	-24.36	-32.69	0.00	0.00	0.00
1,700.00	5.00	311.83	1,698.35	27.61	-30.85	-41.41	0.00	0.00	0.00
1,800.00	5.00	311.83	1,797.97	33.43	-37.35	-50.12	0.00	0.00	0.00
1,900.00	5.00	311.83	1,897.59	39.24	-43.84	-58.84	0.00	0.00	0.00
2,000.00	5.00	311.83	1,997.21	45.05	-50.34	-67.55	0.00	0.00	0.00
2,100.00	5.00	311.83	2,096.83	50.86	-56.83	-76.27	0.00	0.00	0.00
2,200.00	5.00	311.83	2,196.45	56.68	-63.32	-84.98	0.00	0.00	0.00
2,300.00	5.00	311.83	2,296.07	62.49	-69.82	-93.70	0.00	0.00	0.00
2,400.00	5.00	311.83	2,395.69	68.30	-76.31	-102.41	0.00	0.00	0.00
2,500.00	5.00	311.83	2,495.31	74.12	-82.81	-111.13	0.00	0.00	0.00
2,600.00	5.00	311.83	2,594.93	79.93	-89.30	-119.85	0.00	0.00	0.00
2,700.00	5.00	311.83	2,694.55	85.74	-95.79	-128.56	0.00	0.00	0.00
2,800.00	5.00	311.83	2,794.17	91.55	-102.29	-137.28	0.00	0.00	0.00
2,900.00	5.00	311.83	2,893.78	97.37	-108.78	-145.99	0.00	0.00	0.00
3,000.00	5.00	311.83	2,993.40	103.18	-115.28	-154.71	0.00	0.00	0.00
3,100.00	5.00	311.83	3,093.02	108.99	-121.77	-163.42	0.00	0.00	0.00
3,200.00	5.00	311.83	3,192.64	114.80	-128.27	-172.14	0.00	0.00	0.00
3,300.00	5.00	311.83	3,292.26	120.62	-134.76	-180.86	0.00	0.00	0.00
3,400.00	5.00	311.83	3,391.88	126.43	-141.25	-189.57	0.00	0.00	0.00
3,500.00	5.00	311.83	3,491.50	132.24	-147.75	-198.29	0.00	0.00	0.00
3,600.00	5.00	311.83	3,591.12	138.05	-154.24	-207.00	0.00	0.00	0.00
3,700.00	5.00	311.83	3,690.74	143.87	-160.74	-215.72	0.00	0.00	0.00
3,800.00	5.00	311.83	3,790.36	149.68	-167.23	-224.43	0.00	0.00	0.00
3,900.00	5.00	311.83	3,889.98	155.49	-173.73	-233.15	0.00	0.00	0.00
4,000.00	5.00	311.83	3,989.60	161.30	-180.22	-241.86	0.00	0.00	0.00
4,100.00	5.00	311.83	4,089.22	167.12	-186.71	-250.58	0.00	0.00	0.00
4,200.00	5.00	311.83	4,188.84	172.93	-193.21	-259.30	0.00	0.00	0.00
4,300.00	5.00	311.83	4,288.46	178.74	-199.70	-268.01	0.00	0.00	0.00
4,400.00	5.00	311.83	4,388.08	184.56	-206.20	-276.73	0.00	0.00	0.00
4,500.00	5.00	311.83	4,487.70	190.37	-212.69	-285.44	0.00	0.00	0.00
4,600.00	5.00	311.83	4,587.32	196.18	-219.18	-294.16	0.00	0.00	0.00
4,700.00	5.00	311.83	4,686.94	201.99	-225.68	-302.87	0.00	0.00	0.00
4,800.00	5.00	311.83	4,786.55	207.81	-232.17	-311.59	0.00	0.00	0.00
4,900.00	5.00	311.83	4,886.17	213.62	-238.67	-320.30	0.00	0.00	0.00
5,000.00	5.00	311.83	4,985.79	219.43	-245.16	-329.02	0.00	0.00	0.00
5,100.00	5.00	311.83	5,085.41	225.24	-251.66	-337.74	0.00	0.00	0.00
5,200.00	5.00	311.83	5,185.03	231.06	-258.15	-346.45	0.00	0.00	0.00
5,300.00	5.00	311.83	5,284.65	236.87	-264.64	-355.17	0.00	0.00	0.00
5,400.00	5.00	311.83	5,384.27	242.68	-271.14	-363.88	0.00	0.00	0.00
5,500.00	5.00	311.83	5,483.89	248.49	-277.63	-372.60	0.00	0.00	0.00
5,600.00	5.00	311.83	5,583.51	254.31	-284.13	-381.31	0.00	0.00	0.00
5,700.00	5.00	311.83	5,683.13	260.12	-290.62	-390.03	0.00	0.00	0.00
5,800.00	5.00	311.83	5,782.75	265.93	-297.12	-398.74	0.00	0.00	0.00
5,900.00	5.00	311.83	5,882.37	271.74	-303.61	-407.46	0.00	0.00	0.00
6,000.00	5.00	311.83	5,981.99	277.56	-310.10	-416.18	0.00	0.00	0.00

<b>Database:</b>	EDM 2003.21 Single User Db	<b>Local Co-ordinate Reference:</b>	Well P_HOBART 8-67-1-14H
<b>Company:</b>	ANADARKO PETROLEUM CORP.	<b>TVD Reference:</b>	KB @ 5347.00ft (Original Well Elev)
<b>Project:</b>	ANADARKO COLORADO NOTHERN ZONE NAD 83	<b>MD Reference:</b>	KB @ 5347.00ft (Original Well Elev)
<b>Site:</b>	WELD_HOBART 8-67-1-4H	<b>North Reference:</b>	True
<b>Well:</b>	P_HOBART 8-67-1-14H	<b>Survey Calculation Method:</b>	Minimum Curvature
<b>Wellbore:</b>	P_HOBART 8-67-1-14H(600' FNL 600' FWL)		
<b>Design:</b>	PLAN #2 4-22-10 RHS		

Planned Survey									
Measured Depth (ft)	Inclination (°)	Azimuth (°)	Vertical Depth (ft)	+N/-S (ft)	+E/-W (ft)	Vertical Section (ft)	Dogleg Rate (°/100ft)	Build Rate (°/100ft)	Turn Rate (°/100ft)
6,100.00	5.00	311.83	6,081.61	283.37	-316.60	-424.89	0.00	0.00	0.00
6,200.00	5.00	311.83	6,181.23	289.18	-323.09	-433.61	0.00	0.00	0.00
6,300.00	5.00	311.83	6,280.85	294.99	-329.59	-442.32	0.00	0.00	0.00
6,400.00	5.00	311.83	6,380.47	300.81	-336.08	-451.04	0.00	0.00	0.00
6,500.00	5.00	311.83	6,480.09	306.62	-342.57	-459.75	0.00	0.00	0.00
6,600.00	5.00	311.83	6,579.70	312.43	-349.07	-468.47	0.00	0.00	0.00
6,700.00	5.00	311.83	6,679.32	318.25	-355.56	-477.18	0.00	0.00	0.00
6,800.00	5.00	311.83	6,778.94	324.06	-362.06	-485.90	0.00	0.00	0.00
<b>Start DLS 12.00 TFO -179.98</b>									
6,849.21	5.00	311.83	6,827.97	326.92	-365.25	-490.19	0.00	0.00	0.00
6,900.00	1.09	131.97	6,878.70	328.07	-366.54	-491.92	12.00	-7.69	-354.16
7,000.00	13.09	131.86	6,977.76	319.84	-357.36	-479.59	12.00	12.00	-0.10
7,100.00	25.09	131.86	7,072.08	298.05	-333.04	-446.94	12.00	12.00	0.00
7,200.00	37.09	131.86	7,157.56	263.65	-294.65	-395.39	12.00	12.00	0.00
7,300.00	49.09	131.86	7,230.45	218.15	-243.86	-327.19	12.00	12.00	0.00
7,400.00	61.09	131.86	7,287.56	163.53	-182.88	-245.33	12.00	12.00	0.00
7,500.00	73.09	131.86	7,326.42	102.18	-114.40	-153.39	12.00	12.00	0.00
7,600.00	85.09	131.85	7,345.30	36.78	-41.40	-55.37	12.00	12.00	0.00
<b>Start 5445.71 hold at 7647.89 MD(595 FNL 594 FWL) - 7"</b>									
7,647.89	90.84	131.85	7,347.00	4.86	-5.76	-7.53	12.00	12.00	0.00
7,700.00	90.84	131.85	7,346.23	-29.91	33.05	44.57	0.00	0.00	0.00
7,800.00	90.84	131.85	7,344.76	-96.63	107.52	144.56	0.00	0.00	0.00
7,900.00	90.84	131.85	7,343.29	-163.34	182.00	244.55	0.00	0.00	0.00
8,000.00	90.84	131.85	7,341.82	-230.06	256.48	344.54	0.00	0.00	0.00
8,100.00	90.84	131.85	7,340.36	-296.78	330.95	444.53	0.00	0.00	0.00
8,200.00	90.84	131.85	7,338.89	-363.49	405.43	544.52	0.00	0.00	0.00
8,300.00	90.84	131.85	7,337.42	-430.21	479.91	644.51	0.00	0.00	0.00
8,400.00	90.84	131.85	7,335.95	-496.93	554.38	744.50	0.00	0.00	0.00
8,500.00	90.84	131.85	7,334.48	-563.64	628.86	844.49	0.00	0.00	0.00
8,600.00	90.84	131.85	7,333.01	-630.36	703.33	944.48	0.00	0.00	0.00
8,700.00	90.84	131.85	7,331.54	-697.08	777.81	1,044.46	0.00	0.00	0.00
8,800.00	90.84	131.85	7,330.07	-763.79	852.29	1,144.45	0.00	0.00	0.00
8,900.00	90.84	131.85	7,328.60	-830.51	926.76	1,244.44	0.00	0.00	0.00
9,000.00	90.84	131.85	7,327.13	-897.23	1,001.24	1,344.43	0.00	0.00	0.00
9,100.00	90.84	131.85	7,325.67	-963.94	1,075.72	1,444.42	0.00	0.00	0.00
9,200.00	90.84	131.85	7,324.20	-1,030.66	1,150.19	1,544.41	0.00	0.00	0.00
9,300.00	90.84	131.85	7,322.73	-1,097.38	1,224.67	1,644.40	0.00	0.00	0.00
9,400.00	90.84	131.85	7,321.26	-1,164.10	1,299.14	1,744.39	0.00	0.00	0.00
9,500.00	90.84	131.85	7,319.79	-1,230.81	1,373.62	1,844.38	0.00	0.00	0.00
9,600.00	90.84	131.85	7,318.32	-1,297.53	1,448.10	1,944.37	0.00	0.00	0.00
9,700.00	90.84	131.85	7,316.85	-1,364.25	1,522.57	2,044.36	0.00	0.00	0.00
9,800.00	90.84	131.85	7,315.38	-1,430.96	1,597.05	2,144.35	0.00	0.00	0.00
9,900.00	90.84	131.85	7,313.91	-1,497.68	1,671.53	2,244.34	0.00	0.00	0.00
10,000.00	90.84	131.85	7,312.44	-1,564.40	1,746.00	2,344.32	0.00	0.00	0.00
10,100.00	90.84	131.85	7,310.98	-1,631.11	1,820.48	2,444.31	0.00	0.00	0.00
10,200.00	90.84	131.85	7,309.51	-1,697.83	1,894.95	2,544.30	0.00	0.00	0.00
10,300.00	90.84	131.85	7,308.04	-1,764.55	1,969.43	2,644.29	0.00	0.00	0.00
10,400.00	90.84	131.85	7,306.57	-1,831.26	2,043.91	2,744.28	0.00	0.00	0.00
10,500.00	90.84	131.85	7,305.10	-1,897.98	2,118.38	2,844.27	0.00	0.00	0.00
10,600.00	90.84	131.85	7,303.63	-1,964.70	2,192.86	2,944.26	0.00	0.00	0.00
10,700.00	90.84	131.85	7,302.16	-2,031.41	2,267.34	3,044.25	0.00	0.00	0.00
10,800.00	90.84	131.85	7,300.69	-2,098.13	2,341.81	3,144.24	0.00	0.00	0.00
10,900.00	90.84	131.85	7,299.22	-2,164.85	2,416.29	3,244.23	0.00	0.00	0.00

<b>Database:</b>	EDM 2003.21 Single User Db	<b>Local Co-ordinate Reference:</b>	Well P_HOBART 8-67-1-14H
<b>Company:</b>	ANADARKO PETROLEUM CORP.	<b>TVD Reference:</b>	KB @ 5347.00ft (Original Well Elev)
<b>Project:</b>	ANADARKO COLORADO NOTHERN ZONE NAD 83	<b>MD Reference:</b>	KB @ 5347.00ft (Original Well Elev)
<b>Site:</b>	WELD_HOBART 8-67-1-4H	<b>North Reference:</b>	True
<b>Well:</b>	P_HOBART 8-67-1-14H	<b>Survey Calculation Method:</b>	Minimum Curvature
<b>Wellbore:</b>	P_HOBART 8-67-1-14H(600' FNL 600' FWL)		
<b>Design:</b>	PLAN #2 4-22-10 RHS		

Planned Survey									
Measured Depth (ft)	Inclination (°)	Azimuth (°)	Vertical Depth (ft)	+N/-S (ft)	+E/-W (ft)	Vertical Section (ft)	Dogleg Rate (°/100ft)	Build Rate (°/100ft)	Turn Rate (°/100ft)
11,000.00	90.84	131.85	7,297.75	-2,231.56	2,490.77	3,344.22	0.00	0.00	0.00
11,100.00	90.84	131.85	7,296.29	-2,298.28	2,565.24	3,444.21	0.00	0.00	0.00
11,200.00	90.84	131.85	7,294.82	-2,365.00	2,639.72	3,544.20	0.00	0.00	0.00
11,300.00	90.84	131.85	7,293.35	-2,431.71	2,714.19	3,644.18	0.00	0.00	0.00
11,400.00	90.84	131.85	7,291.88	-2,498.43	2,788.67	3,744.17	0.00	0.00	0.00
11,500.00	90.84	131.85	7,290.41	-2,565.15	2,863.15	3,844.16	0.00	0.00	0.00
11,600.00	90.84	131.85	7,288.94	-2,631.86	2,937.62	3,944.15	0.00	0.00	0.00
11,700.00	90.84	131.85	7,287.47	-2,698.58	3,012.10	4,044.14	0.00	0.00	0.00
11,800.00	90.84	131.85	7,286.00	-2,765.30	3,086.58	4,144.13	0.00	0.00	0.00
11,900.00	90.84	131.85	7,284.53	-2,832.01	3,161.05	4,244.12	0.00	0.00	0.00
12,000.00	90.84	131.85	7,283.06	-2,898.73	3,235.53	4,344.11	0.00	0.00	0.00
12,100.00	90.84	131.85	7,281.60	-2,965.45	3,310.00	4,444.10	0.00	0.00	0.00
12,200.00	90.84	131.85	7,280.13	-3,032.16	3,384.48	4,544.09	0.00	0.00	0.00
12,300.00	90.84	131.85	7,278.66	-3,098.88	3,458.96	4,644.08	0.00	0.00	0.00
12,400.00	90.84	131.85	7,277.19	-3,165.60	3,533.43	4,744.07	0.00	0.00	0.00
12,500.00	90.84	131.85	7,275.72	-3,232.31	3,607.91	4,844.05	0.00	0.00	0.00
12,600.00	90.84	131.85	7,274.25	-3,299.03	3,682.39	4,944.04	0.00	0.00	0.00
12,700.00	90.84	131.85	7,272.78	-3,365.75	3,756.86	5,044.03	0.00	0.00	0.00
12,800.00	90.84	131.85	7,271.31	-3,432.46	3,831.34	5,144.02	0.00	0.00	0.00
12,900.00	90.84	131.85	7,269.84	-3,499.18	3,905.81	5,244.01	0.00	0.00	0.00
13,000.00	90.84	131.85	7,268.38	-3,565.90	3,980.29	5,344.00	0.00	0.00	0.00
TD at 13093.60 - PBHL_HOBART 8-67-1-4H(600' FSL 600' FEL)									
13,093.60	90.84	131.85	7,267.00	-3,628.35	4,050.00	5,437.59	0.00	0.00	0.00

Design Targets									
Target Name	Dip Angle (°)	Dip Dir. (°)	TVD (ft)	+N/-S (ft)	+E/-W (ft)	Northing (ft)	Easting (ft)	Latitude	Longitude
- hit/miss target									
- Shape									
PBHL_HOBART 8-67	0.00	0.00	7,267.00	-3,628.35	4,050.00	1,493,040.30	3,185,273.56	40° 41' 5.543 N	104° 49' 55.042 W
- plan hits target center									
- Point									

Casing Points					
Measured Depth (ft)	Vertical Depth (ft)	Name	Casing Diameter (in)	Hole Diameter (in)	
7,647.89	7,347.00	7"	7.00	7.50	
1,000.00	1,000.00	9 5/8"	9.62	12.25	

Plan Annotations				
Measured Depth (ft)	Vertical Depth (ft)	+N/-S (ft)	+E/-W (ft)	Comment
1,100.00	1,100.00	0.00	0.00	Start Build 2.00(600 FNL 600 FWL)
1,350.00	1,349.68	7.27	-8.12	Start 5499.21 hold at 1350.00 MD
6,849.21	6,827.97	326.92	-365.25	Start DLS 12.00 TFO -179.98
7,647.89	7,347.00	4.85	-5.76	Start 5445.71 hold at 7647.89 MD(595 FNL 594 FWL)
13,093.60	7,267.00	-3,628.35	4,050.00	TD at 13093.60