

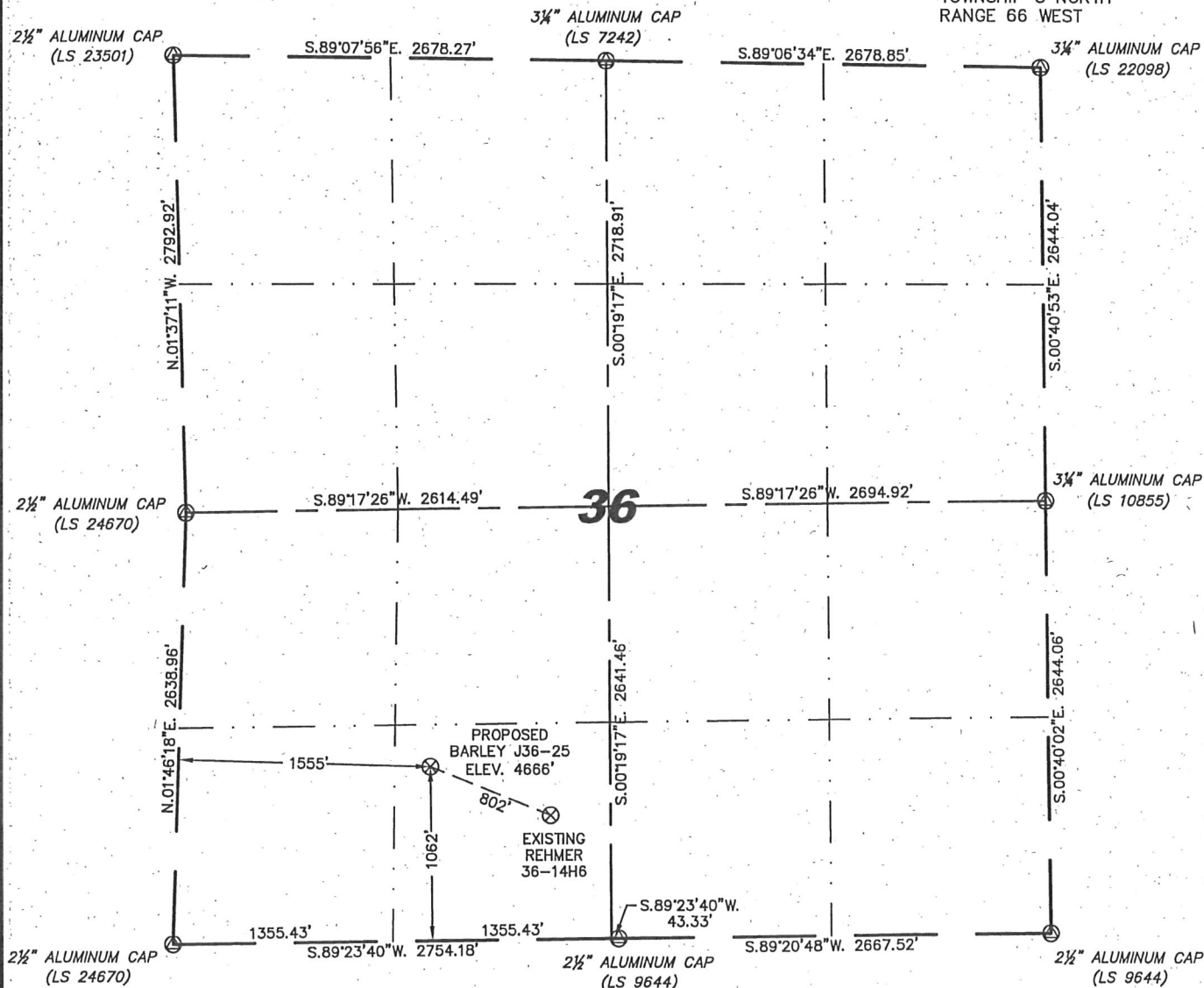
Steil Surveying Services, LLC

1102 West 19th Street P.O. BOX 2073

Cheyenne, Wyoming 82009

**WELL LOCATION CERTIFICATE**  
THIS MAP DOES NOT REPRESENT A BOUNDARY SURVEY

SECTION 36  
TOWNSHIP 5 NORTH  
RANGE 66 WEST



0 1000

Scale: 1" = 1000'

IN ACCORDANCE WITH A REQUEST FROM BRIAN DeROSE - NOBLE ENERGY INC, STEIL SURVEYING SERVICES, LLC HAS DETERMINED THE LOCATION OF THE BARLEY J36-25 WELL TO BE 1062' FSL, 1555' FWL, AS MEASURED AT NINETY (90) DEGREES FROM THE SECTION LINES, SECTION 36, TOWNSHIP 5 NORTH, RANGE 66 WEST, 6TH PRINCIPLE MERIDIAN, WELD COUNTY, COLORADO.

I HEREBY CERTIFY THAT THIS WELL LOCATION CERTIFICATE WAS PREPARED BY ME, OR UNDER MY DIRECT SUPERVISION, THAT THE FIELD WORK WAS COMPLETED ON 02/25/2010, FOR AND ON BEHALF OF NOBLE ENERGY INC, THAT IT IS NOT A LAND SURVEY PLAT OR AN IMPROVEMENT SURVEY PLAT, AND THAT IT IS NOT TO BE RELIED UPON FOR ESTABLISHMENT OF FENCE, BUILDING, OR OTHER FUTURE IMPROVEMENT LINES.

**NOTES:**

- 1) BASIS OF BEARINGS FOR THIS MAP ARE BASED UPON GPS OBSERVATIONS MADE ON 02/25/2010 BETWEEN MONUMENTS LOCATED AT THE SOUTHEAST SECTION CORNER AND THE NORTHEAST SECTION CORNER OF SAID SECTION AND WITH ALL BEARINGS SHOWN HEREON RELATIVE THERETO.
- 2) ELEVATIONS ARE BASED UPON NGS OPUS SOLUTION NAVD 88 DATUM.
- 3) THE NEAREST EXISTING WELL IS: REHMER 36-14H6, 802' SOUTHEAST.
- 4) SEE VISIBLE IMPROVEMENTS EXHIBIT FOR ALL IMPROVEMENTS WITHIN 400'.
- 5) THE LOCATION FALLS IN CROP LAND.

LATITUDE & LONGITUDE (NAD 83 SURFACE HOLE):

LATITUDE: N 40.35135°  
LONGITUDE: W 104.72940°

PDOP: 2.0

QUARTER-QUARTER: SE/4SW/4

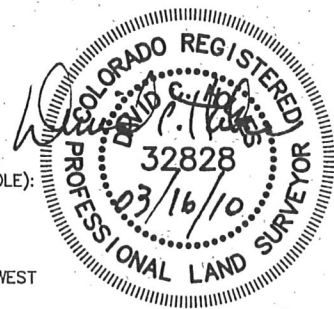
NEAREST PROPERTY LINE: 220'+/- TO THE WEST

**LEGEND**

(A) FOUND SURVEY MONUMENT PER MONUMENT RECORD - EXCEPTIONS NOTED.

(C) CALCULATED DIMENSION

NOTICE: According to Colorado law you MUST commence any legal action based upon any defect in this W.L.C. within three years after you first discover such defect. In no event may any action based upon any defect in this W.L.C. be commenced more than ten years from this sold date of the certification shown hereon.



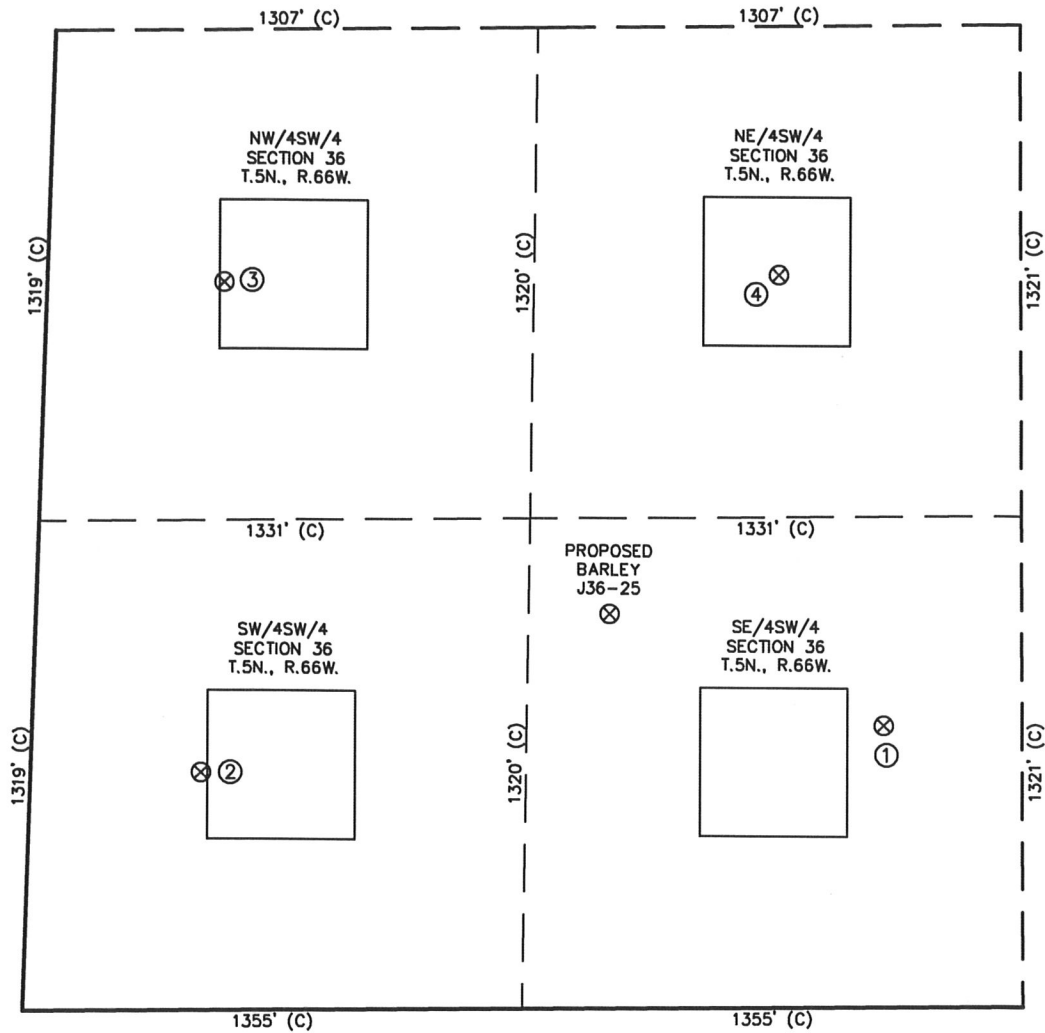
Completed 03/14/2010

David C. Holmes  
Professional Land Surveyor Registration No. 32828  
State of Colorado

JOB #:10086

# SKETCH - BARLEY J36-25

SECTION 36  
TOWNSHIP 5 NORTH  
RANGE 66 WEST



①	②	③	④
REHMER 36-14H6 SE/SW SEC. 36 757' FSL 2309' FWL EL 4665' N 40.35052 W 104.72673 PDOP 2.4	PEPLER 1-36 SW/SW SEC. 36 640' FSL 461' FWL EL 4668' N 40.35019 W 104.73338 PDOP 1.8	PEPLER 2-36 NW/SW SEC. 36 1959' FSL 478' FWL EL 4666' N 40.35381 W 104.73313 PDOP 1.9	BROWN NO. 1 NE/SW SEC. 36 1971' FSL 1983' FWL EL 4663' N 40.35385 W 104.72773 PDOP 2.0

## NOTES:

- THIS SKETCH DOES NOT REPRESENT A BOUNDARY SURVEY.
- THE DATUM FOR THE LATITUDES AND LONGITUDES ON THIS SKETCH IS NAD83.

