

DALEY LAND SURVEYING, INC.

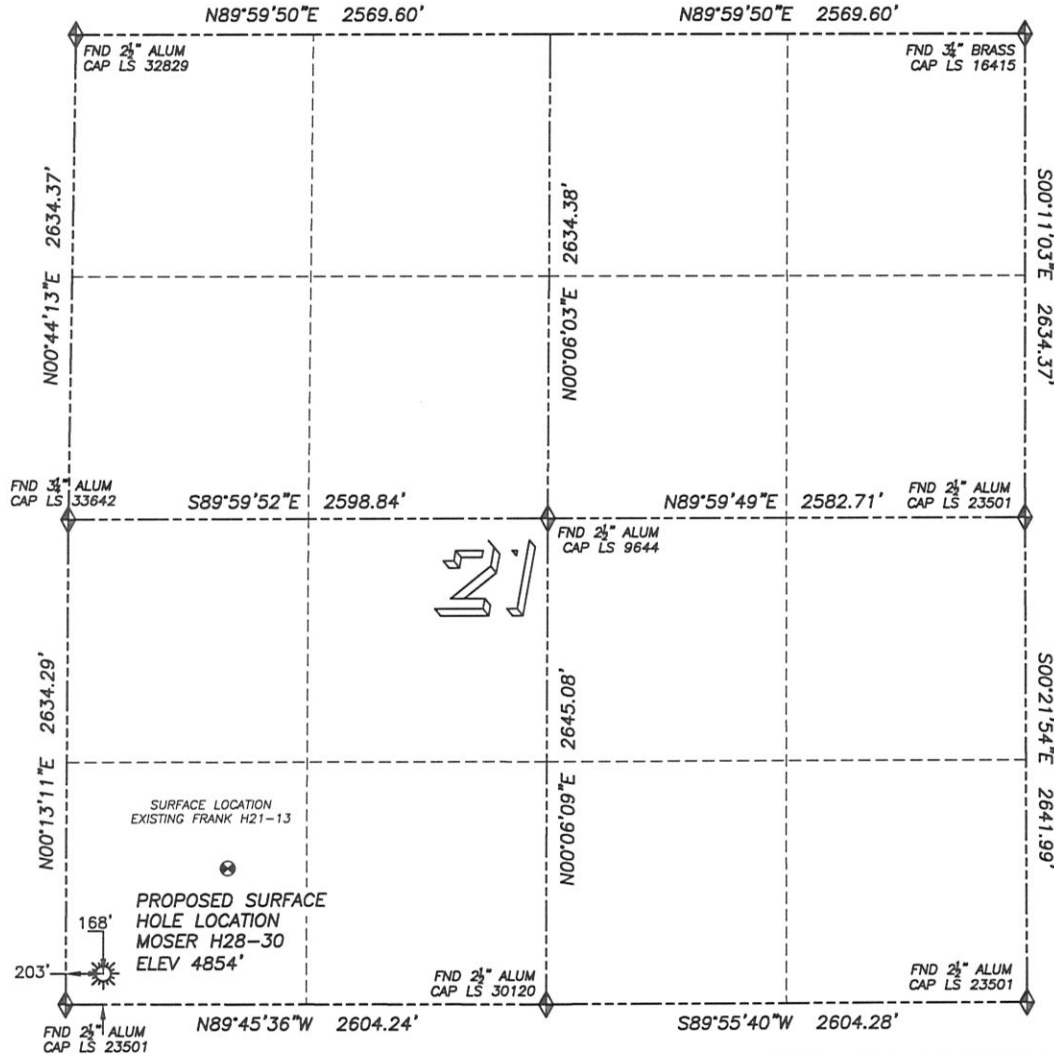
PARKER, CO. 80134

303 953 9841

WELL LOCATION CERTIFICATE

MOSER H28-30

SECTION 21, TOWNSHIP 3 NORTH, RANGE 65 WEST OF THE 6TH PRINCIPAL MERIDIAN



0 500 1000
SCALE: 1" = 1000'

LEGEND

- ◆ FOUND MONUMENT AS DESCRIBED
- ☀ PROPOSED WELL
- ⊙ EXISTING WELL
- BOTTOM HOLE
- ⊘ ABANDONED WELL

NAD 83 LATITUDE AND LONGITUDE**MOSER H28-30 SURFACE HOLE:**

LATITUDE: N40.20417°
LONGITUDE: W104.67718°
ELEVATION: 4854'
PDOP 2.1
168' FSL, 203' FWL

NEAREST EXISTING WELL:

FRANK H21-13 SURFACE HOLE
LATITUDE: N40.20573°
LONGITUDE: W104.67477°
ELEVATION: 4851'
881' NORTHEAST

QUARTER/QUARTER: SW4/SW4

NEAREST APPARENT PROPERTY LINE:
168'± SOUTH

IN ACCORDANCE WITH A REQUEST FROM BILL BETSON OF NOBLE ENERGY INC., DALEY LAND SURVEYING, INC. HAS DETERMINED THE SURFACE LOCATION OF THE MOSER H28-30 WELL TO BE 168' FSL, 203' FWL, AS MEASURED AT NINETY (90) DEGREES FROM THE SECTION LINES OF SECTION 21, TOWNSHIP 3 NORTH, RANGE 65 WEST OF THE 6TH PRINCIPAL MERIDIAN, WELD COUNTY COLORADO.

I HEREBY CERTIFY THAT THIS WELL LOCATION CERTIFICATE WAS PREPARED BY ME OR UNDER MY DIRECT SUPERVISION, THAT THE WORK WAS COMPLETED ON 2/18/2010 FOR AND ON BEHALF OF NOBLE ENERGY, INC., AND THAT THIS MAP DOES NOT REPRESENT A BOUNDARY SURVEY, IT IS NOT A LAND SURVEY PLAT OR AN IMPROVEMENT SURVEY PLAT AND IT IS NOT TO BE RELIED UPON FOR THE ESTABLISHMENT OF FENCE, BUILDING OR OTHER FUTURE IMPROVEMENT LINES.

NOTES:

- 1) BASIS OF BEARING FOR THIS MAP IS ASSUMED AND BASED UPON GPS OBSERVATIONS MADE BETWEEN MONUMENTS LOCATED AT THE SOUTHWEST AND WEST QUARTER CORNERS OF SECTION 21, T.3N., R.65W., AND ALL BEARINGS SHOWN HEREON ARE RELATIVE THERETO.
- 2) HORIZONTAL DATUM IS NAD83.
- 3) VERTICAL DATUM IS NAVD88. ELEVATIONS ARE DERIVED FROM GPS-RTK OBSERVATIONS PROCESSED THROUGH OPUS, UTILIZING THE GEOID03 MODEL.
- 4) SEE VISIBLE IMPROVEMENTS EXHIBIT FOR VISIBLE IMPROVEMENTS WITHIN 600' OF PROPOSED SURFACE HOLE LOCATION
- 5) SURFACE USE: OPEN RANGE LAND

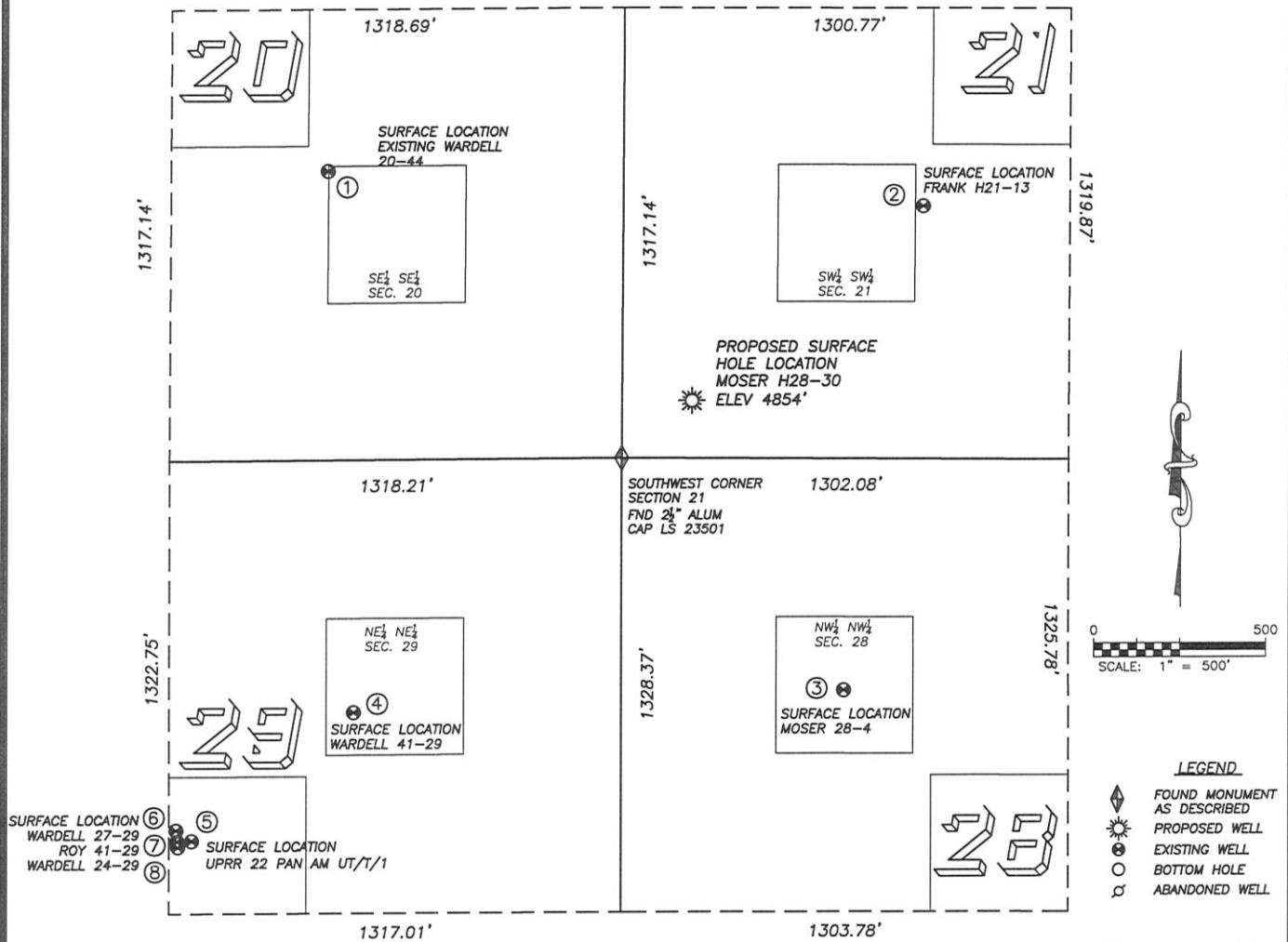
NOTICE: According to Colorado law you MUST commence any legal action based upon any defect in this W.L.C. within three years after you first discover such defect. In no event may any action based upon any such defect in this W.L.C. be commenced more than ten years from the date of the certification shown hereon.



FOR AND ON BEHALF OF
DALEY LAND SURVEYING INC.,
Robert Daley, PLS 35597

SITE SKETCH MOSER H28-30

SECTION 21, TOWNSHIP 3 NORTH, RANGE 65 WEST OF THE 6TH PRINCIPAL MERIDIAN



①

WARDELL 20-44
SE/SE SEC. 20
844' FSL, 861' FEL
1256' NW OF PROPOSED
SURFACE HOLE LOCATION
LAT. N40.20601'
LONG. W104.68098'
EL: 4878'
PDOP 2.6

②

FRANK H21-13
SW/SW SEC. 21
739' FSL, 874' FWL
881' NE OF PROPOSED
SURFACE HOLE LOCATION
LAT. N40.20573'
LONG. W104.67477'
EL: 4851'
PDOP 2.5

③

MOSER H28-4
NW/NW SEC. 28
678' FNL, 649' FWL
957' SE OF PROPOSED
SURFACE HOLE LOCATION
LAT. N40.20184'
LONG. W104.67559'
EL: 4850'
PDOP 2.3

④

WARDELL 41-29
NE/NE SEC. 29
738' FNL, 779' FEL
1340' SW OF PROPOSED
SURFACE HOLE LOCATION
LAT. N40.20167'
LONG. W104.68070'
EL: 4911'
PDOP 1.5

⑤

UPRR 22 PAN AM
UT/UT/1
NE/NE SEC. 29
1110' FNL, 1251' FEL
1942' SW OF PROPOSED
SURFACE HOLE LOCATION
LAT. N40.20064'
LONG. W104.68239'
EL: 4887'
PDOP 2.3

⑥

WARDELL 27-29
NE/NE SEC. 29
1080' FNL, 1296' FEL
1957' SW OF PROPOSED
SURFACE HOLE LOCATION
LAT. N40.20072'
LONG. W104.68255'
EL: 4888'
PDOP 2.3

⑦

ROY 41-29
NE/NE SEC. 29
1112' FNL, 1293' FEL
1975' SW OF PROPOSED
SURFACE HOLE LOCATION
LAT. N40.20063'
LONG. W104.68254'
EL: 4888'
PDOP 3.2

⑧

WARDELL 24-29
NE/NE SEC. 29
1128' FNL, 1291' FEL
1984' SW OF PROPOSED
SURFACE HOLE LOCATION
LAT. N40.20059'
LONG. W104.68253'
EL: 4888'
PDOP 3.2

NOTES:

- 1) THIS DOES NOT REPRESENT A BOUNDARY SURVEY
- 2) THE LATITUDES AND LONGITUDES SHOWN ARE REFERENCED TO NAD83
- 3) DATUM FOR ELEVATION IS NAVD88. ELEVATIONS ARE DERIVED FROM GPS-RTK OBSERVATIONS PROCESSED THROUGH OPUS, UTILIZING THE GEOID03 MODEL.