

ENSIGN

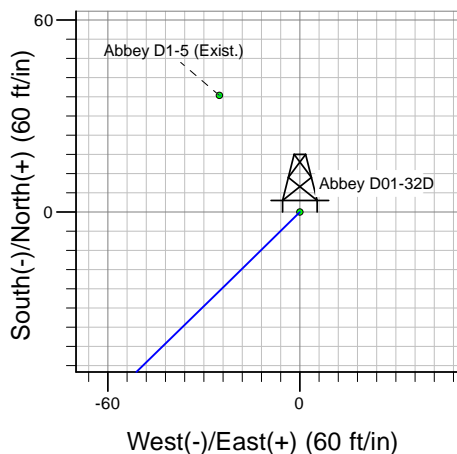
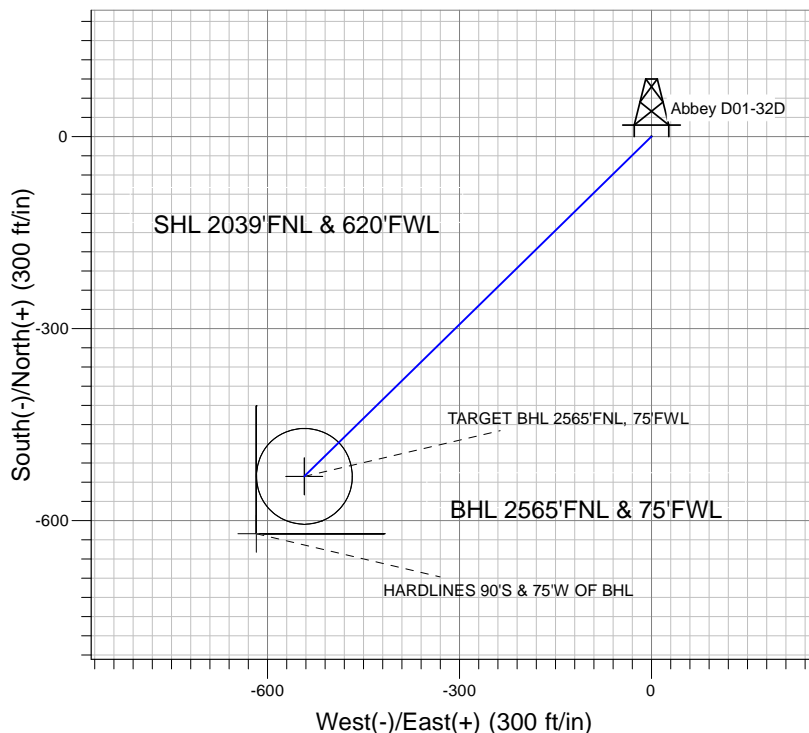
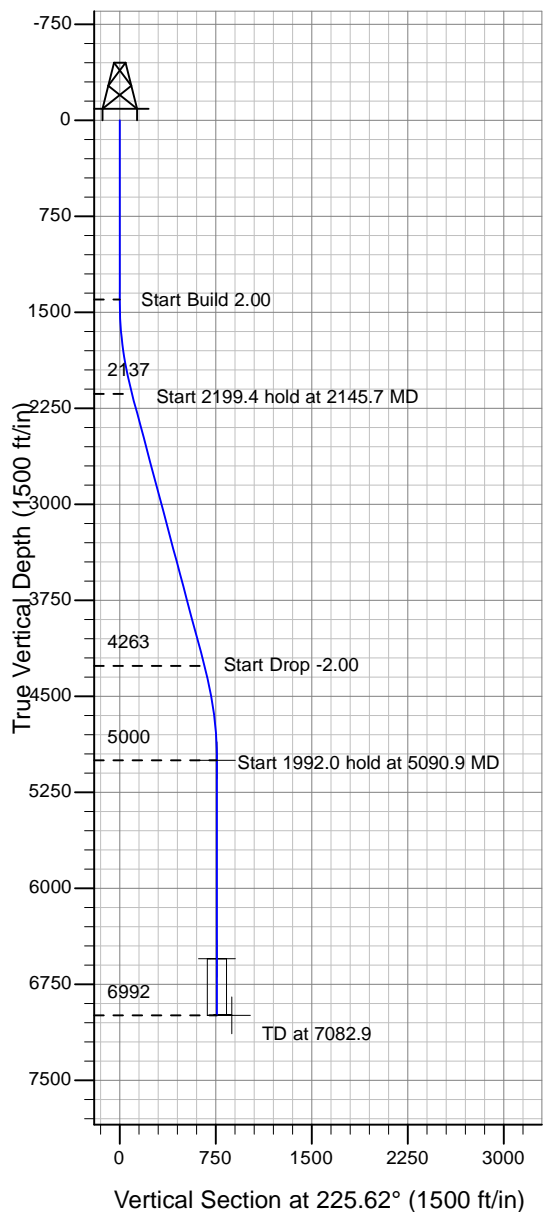
Directional

Well Name: Abbey D01-32D

Surface Location: Abbey D01-32D Pad Sec.1-T3N-R64W
 North American Datum 1983 , US State Plane 1983 , Colorado Northern Zone
 Ground Elevation: 4729.0

+N/-S+E/-W Northing Easting Latitude Longitude Slot
 0.0 0.0 1337706.26 3277239.54 40° 15' 22.104 N 104° 30' 23.940 W
 Original Well Elev WELL @ 4742.0ft (Original Well Elev)

NOBLE ENERGY INC WELD COUNTY CO



Abbey D01-32D Pad Sec.1-T3N-R64W
 Abbey D01-32D
 Noble Abbey D01-32D Plan #2 (04-05-10)
 16:35, April 05 2010



Azimuths to True North
 Magnetic North: 8.87°

Magnetic Field
 Strength: 53212.0nT
 Dip Angle: 67.02°
 Date: 4/1/2010
 Model: IGRF2010

WELLBORE TARGET DETAILS (LAT/LONG)

Name	TVD	+N/-S	+E/-W	Latitude	Longitude	Shape
TARGET BHL 2565'FNL, 75'FWL	5000.0	-530.9	-542.5	40° 15' 16.857 N	104° 30' 30.938 W	Point
TARGET CIRCLE 2565'FNL, 75'FWL	6550.0	-530.9	-542.5	40° 15' 16.858 N	104° 30' 30.937 W	Circle (Radius: 75.0)
HARDLINES 90'S & 75'W OF BHL	6992.0	-620.9	-617.5	40° 15' 15.968 N	104° 30' 31.904 W	Polygon

SECTION DETAILS

Sec	MD	Inc	Azi	TVD	+N/-S	+E/-W	DLeg	TFace	VSec	Target
1	0.0	0.00	0.00	0.0	0.0	0.0	0.00	0.00	0.0	
2	1400.0	0.00	0.00	1400.0	0.0	0.0	0.00	0.00	0.0	
3	2145.7	14.91	225.62	2137.3	-67.5	-69.0	2.00	225.62	96.5	
4	4345.2	14.91	225.62	4262.7	-463.4	-473.6	0.00	0.00	662.6	
5	5090.9	0.00	0.00	5000.0	-530.9	-542.5	2.00	180.00	759.1	TARGET BHL 2565'FNL, 75'FWL
6	7082.9	0.00	0.00	6992.0	-530.9	-542.5	0.00	0.00	759.1	



NOBLE ENERGY INC WELD COUNTY CO

SEC.1-T3N-R64W

Abbey D01-32D Pad Sec.1-T3N-R64W

Abbey D01-32D

Wellbore #1

Plan: Noble Abbey D01-32D Plan #2 (04-05-10)

Standard Planning Report

05 April, 2010



Database:	EDM den0-adp01 Server Data	Local Co-ordinate Reference:	Well Abbey D01-32D
Company:	NOBLE ENERGY INC WELD COUNTY CO	TVD Reference:	WELL @ 4742.0ft (Original Well Elev)
Project:	SEC.1-T3N-R64W	MD Reference:	WELL @ 4742.0ft (Original Well Elev)
Site:	Abbey D01-32D Pad Sec.1-T3N-R64W	North Reference:	True
Well:	Abbey D01-32D	Survey Calculation Method:	Minimum Curvature
Wellbore:	Wellbore #1		
Design:	Noble Abbey D01-32D Plan #2 (04-05-10)		

Project	SEC.1-T3N-R64W, Weld County, Colorado		
Map System:	US State Plane 1983	System Datum:	Mean Sea Level
Geo Datum:	North American Datum 1983		
Map Zone:	Colorado Northern Zone		Using geodetic scale factor

Site						Abbey D01-32D Pad Sec.1-T3N-R64W											
Site Position:						Northing:			1,337,706.27 ft			Latitude:			40° 15' 22.104 N		
From:			Lat/Long			Easting:			3,277,239.54 ft			Longitude:			104° 30' 23.940 W		
Position Uncertainty:			0.0 ft			Slot Radius:			"			Grid Convergence:			0.64 °		

Well	Abbey D01-32D					
Well Position	+N/-S	0.0 ft	Northing:	1,337,706.26 ft	Latitude:	40° 15' 22.104 N
	+E/-W	0.0 ft	Easting:	3,277,239.54 ft	Longitude:	104° 30' 23.940 W
Position Uncertainty		0.0 ft	Wellhead Elevation:	ft	Ground Level:	4,729.0 ft

Wellbore	Wellbore #1				
Magnetics	Model Name	Sample Date	Declination (°)	Dip Angle (°)	Field Strength (nT)
	IGRF2010	4/1/2010	8.88	67.02	53,212

Design	Noble Abbey D01-32D Plan #2 (04-05-10)			
Audit Notes:				
Version:	Phase:	PROTOTYPE	Tie On Depth:	0.0
Vertical Section:	Depth From (TVD) (ft)	+N/-S (ft)	+E/-W (ft)	Direction (°)
	0.0	0.0	0.0	225.62

Plan Sections										
Measured Depth (ft)	Inclination (°)	Azimuth (°)	Vertical Depth (ft)	+N/-S (ft)	+E/-W (ft)	Dogleg Rate (°/100ft)	Build Rate (°/100ft)	Turn Rate (°/100ft)	TFO (°)	Target
0.0	0.00	0.00	0.0	0.0	0.0	0.00	0.00	0.00	0.00	
1,400.0	0.00	0.00	1,400.0	0.0	0.0	0.00	0.00	0.00	0.00	
2,145.7	14.91	225.62	2,137.3	-67.5	-69.0	2.00	2.00	0.00	225.62	
4,345.2	14.91	225.62	4,262.7	-463.4	-473.6	0.00	0.00	0.00	0.00	
5,090.9	0.00	0.00	5,000.0	-530.9	-542.5	2.00	-2.00	0.00	180.00	TARGET BHL 2565
7,082.9	0.00	0.00	6,992.0	-530.9	-542.5	0.00	0.00	0.00	0.00	

Database:	EDM den0-adp01 Server Data	Local Co-ordinate Reference:	Well Abbey D01-32D
Company:	NOBLE ENERGY INC WELD COUNTY CO	TVD Reference:	WELL @ 4742.0ft (Original Well Elev)
Project:	SEC.1-T3N-R64W	MD Reference:	WELL @ 4742.0ft (Original Well Elev)
Site:	Abbey D01-32D Pad Sec.1-T3N-R64W	North Reference:	True
Well:	Abbey D01-32D	Survey Calculation Method:	Minimum Curvature
Wellbore:	Wellbore #1		
Design:	Noble Abbey D01-32D Plan #2 (04-05-10)		

Planned Survey									
Measured Depth (ft)	Inclination (°)	Azimuth (°)	Vertical Depth (ft)	+N/-S (ft)	+E/-W (ft)	Vertical Section (ft)	Dogleg Rate (°/100ft)	Build Rate (°/100ft)	Turn Rate (°/100ft)
0.0	0.00	0.00	0.0	0.0	0.0	0.0	0.00	0.00	0.00
40.0	0.00	0.00	40.0	0.0	0.0	0.0	0.00	0.00	0.00
80.0	0.00	0.00	80.0	0.0	0.0	0.0	0.00	0.00	0.00
120.0	0.00	0.00	120.0	0.0	0.0	0.0	0.00	0.00	0.00
160.0	0.00	0.00	160.0	0.0	0.0	0.0	0.00	0.00	0.00
200.0	0.00	0.00	200.0	0.0	0.0	0.0	0.00	0.00	0.00
240.0	0.00	0.00	240.0	0.0	0.0	0.0	0.00	0.00	0.00
280.0	0.00	0.00	280.0	0.0	0.0	0.0	0.00	0.00	0.00
320.0	0.00	0.00	320.0	0.0	0.0	0.0	0.00	0.00	0.00
360.0	0.00	0.00	360.0	0.0	0.0	0.0	0.00	0.00	0.00
400.0	0.00	0.00	400.0	0.0	0.0	0.0	0.00	0.00	0.00
440.0	0.00	0.00	440.0	0.0	0.0	0.0	0.00	0.00	0.00
480.0	0.00	0.00	480.0	0.0	0.0	0.0	0.00	0.00	0.00
520.0	0.00	0.00	520.0	0.0	0.0	0.0	0.00	0.00	0.00
560.0	0.00	0.00	560.0	0.0	0.0	0.0	0.00	0.00	0.00
600.0	0.00	0.00	600.0	0.0	0.0	0.0	0.00	0.00	0.00
640.0	0.00	0.00	640.0	0.0	0.0	0.0	0.00	0.00	0.00
680.0	0.00	0.00	680.0	0.0	0.0	0.0	0.00	0.00	0.00
720.0	0.00	0.00	720.0	0.0	0.0	0.0	0.00	0.00	0.00
760.0	0.00	0.00	760.0	0.0	0.0	0.0	0.00	0.00	0.00
800.0	0.00	0.00	800.0	0.0	0.0	0.0	0.00	0.00	0.00
840.0	0.00	0.00	840.0	0.0	0.0	0.0	0.00	0.00	0.00
880.0	0.00	0.00	880.0	0.0	0.0	0.0	0.00	0.00	0.00
920.0	0.00	0.00	920.0	0.0	0.0	0.0	0.00	0.00	0.00
960.0	0.00	0.00	960.0	0.0	0.0	0.0	0.00	0.00	0.00
1,000.0	0.00	0.00	1,000.0	0.0	0.0	0.0	0.00	0.00	0.00
1,040.0	0.00	0.00	1,040.0	0.0	0.0	0.0	0.00	0.00	0.00
1,080.0	0.00	0.00	1,080.0	0.0	0.0	0.0	0.00	0.00	0.00
1,120.0	0.00	0.00	1,120.0	0.0	0.0	0.0	0.00	0.00	0.00
1,160.0	0.00	0.00	1,160.0	0.0	0.0	0.0	0.00	0.00	0.00
1,200.0	0.00	0.00	1,200.0	0.0	0.0	0.0	0.00	0.00	0.00
1,240.0	0.00	0.00	1,240.0	0.0	0.0	0.0	0.00	0.00	0.00
1,280.0	0.00	0.00	1,280.0	0.0	0.0	0.0	0.00	0.00	0.00
1,320.0	0.00	0.00	1,320.0	0.0	0.0	0.0	0.00	0.00	0.00
1,360.0	0.00	0.00	1,360.0	0.0	0.0	0.0	0.00	0.00	0.00
1,400.0	0.00	0.00	1,400.0	0.0	0.0	0.0	0.00	0.00	0.00
1,440.0	0.80	225.62	1,440.0	-0.2	-0.2	0.3	2.00	2.00	0.00
1,480.0	1.60	225.62	1,480.0	-0.8	-0.8	1.1	2.00	2.00	0.00
1,520.0	2.40	225.62	1,520.0	-1.8	-1.8	2.5	2.00	2.00	0.00
1,560.0	3.20	225.62	1,559.9	-3.1	-3.2	4.5	2.00	2.00	0.00
1,600.0	4.00	225.62	1,599.8	-4.9	-5.0	7.0	2.00	2.00	0.00
1,640.0	4.80	225.62	1,639.7	-7.0	-7.2	10.0	2.00	2.00	0.00
1,680.0	5.60	225.62	1,679.6	-9.6	-9.8	13.7	2.00	2.00	0.00
1,720.0	6.40	225.62	1,719.3	-12.5	-12.8	17.9	2.00	2.00	0.00
1,760.0	7.20	225.62	1,759.1	-15.8	-16.1	22.6	2.00	2.00	0.00
1,800.0	8.00	225.62	1,798.7	-19.5	-19.9	27.9	2.00	2.00	0.00
1,840.0	8.80	225.62	1,838.3	-23.6	-24.1	33.7	2.00	2.00	0.00
1,880.0	9.60	225.62	1,877.8	-28.1	-28.7	40.1	2.00	2.00	0.00
1,920.0	10.40	225.62	1,917.1	-32.9	-33.6	47.1	2.00	2.00	0.00
1,960.0	11.20	225.62	1,956.4	-38.2	-39.0	54.6	2.00	2.00	0.00
2,000.0	12.00	225.62	1,995.6	-43.8	-44.7	62.6	2.00	2.00	0.00
2,040.0	12.80	225.62	2,034.7	-49.8	-50.9	71.2	2.00	2.00	0.00
2,080.0	13.60	225.62	2,073.6	-56.2	-57.4	80.3	2.00	2.00	0.00
2,120.0	14.40	225.62	2,112.4	-62.9	-64.3	90.0	2.00	2.00	0.00

Database:	EDM den0-adp01 Server Data	Local Co-ordinate Reference:	Well Abbey D01-32D
Company:	NOBLE ENERGY INC WELD COUNTY CO	TVD Reference:	WELL @ 4742.0ft (Original Well Elev)
Project:	SEC.1-T3N-R64W	MD Reference:	WELL @ 4742.0ft (Original Well Elev)
Site:	Abbey D01-32D Pad Sec.1-T3N-R64W	North Reference:	True
Well:	Abbey D01-32D	Survey Calculation Method:	Minimum Curvature
Wellbore:	Wellbore #1		
Design:	Noble Abbey D01-32D Plan #2 (04-05-10)		

Planned Survey									
Measured Depth (ft)	Inclination (°)	Azimuth (°)	Vertical Depth (ft)	+N/-S (ft)	+E/-W (ft)	Vertical Section (ft)	Dogleg Rate (°/100ft)	Build Rate (°/100ft)	Turn Rate (°/100ft)
2,145.7	14.91	225.62	2,137.3	-67.5	-69.0	96.5	2.00	2.00	0.00
2,160.0	14.91	225.62	2,151.1	-70.1	-71.6	100.2	0.00	0.00	0.00
2,200.0	14.91	225.62	2,189.8	-77.3	-79.0	110.5	0.00	0.00	0.00
2,240.0	14.91	225.62	2,228.4	-84.5	-86.3	120.8	0.00	0.00	0.00
2,280.0	14.91	225.62	2,267.1	-91.7	-93.7	131.1	0.00	0.00	0.00
2,320.0	14.91	225.62	2,305.7	-98.9	-101.0	141.4	0.00	0.00	0.00
2,360.0	14.91	225.62	2,344.4	-106.1	-108.4	151.7	0.00	0.00	0.00
2,400.0	14.91	225.62	2,383.0	-113.3	-115.8	162.0	0.00	0.00	0.00
2,440.0	14.91	225.62	2,421.7	-120.5	-123.1	172.3	0.00	0.00	0.00
2,480.0	14.91	225.62	2,460.3	-127.7	-130.5	182.5	0.00	0.00	0.00
2,520.0	14.91	225.62	2,499.0	-134.9	-137.8	192.8	0.00	0.00	0.00
2,560.0	14.91	225.62	2,537.7	-142.1	-145.2	203.1	0.00	0.00	0.00
2,600.0	14.91	225.62	2,576.3	-149.3	-152.5	213.4	0.00	0.00	0.00
2,640.0	14.91	225.62	2,615.0	-156.5	-159.9	223.7	0.00	0.00	0.00
2,680.0	14.91	225.62	2,653.6	-163.7	-167.3	234.0	0.00	0.00	0.00
2,720.0	14.91	225.62	2,692.3	-170.9	-174.6	244.3	0.00	0.00	0.00
2,760.0	14.91	225.62	2,730.9	-178.1	-182.0	254.6	0.00	0.00	0.00
2,800.0	14.91	225.62	2,769.6	-185.3	-189.3	264.9	0.00	0.00	0.00
2,840.0	14.91	225.62	2,808.2	-192.5	-196.7	275.2	0.00	0.00	0.00
2,880.0	14.91	225.62	2,846.9	-199.7	-204.0	285.5	0.00	0.00	0.00
2,920.0	14.91	225.62	2,885.5	-206.9	-211.4	295.8	0.00	0.00	0.00
2,960.0	14.91	225.62	2,924.2	-214.1	-218.8	306.1	0.00	0.00	0.00
3,000.0	14.91	225.62	2,962.8	-221.3	-226.1	316.4	0.00	0.00	0.00
3,040.0	14.91	225.62	3,001.5	-228.5	-233.5	326.7	0.00	0.00	0.00
3,080.0	14.91	225.62	3,040.1	-235.7	-240.8	337.0	0.00	0.00	0.00
3,120.0	14.91	225.62	3,078.8	-242.9	-248.2	347.3	0.00	0.00	0.00
3,160.0	14.91	225.62	3,117.4	-250.1	-255.6	357.6	0.00	0.00	0.00
3,200.0	14.91	225.62	3,156.1	-257.3	-262.9	367.9	0.00	0.00	0.00
3,240.0	14.91	225.62	3,194.7	-264.5	-270.3	378.1	0.00	0.00	0.00
3,280.0	14.91	225.62	3,233.4	-271.7	-277.6	388.4	0.00	0.00	0.00
3,320.0	14.91	225.62	3,272.0	-278.9	-285.0	398.7	0.00	0.00	0.00
3,360.0	14.91	225.62	3,310.7	-286.1	-292.3	409.0	0.00	0.00	0.00
3,400.0	14.91	225.62	3,349.4	-293.3	-299.7	419.3	0.00	0.00	0.00
3,440.0	14.91	225.62	3,388.0	-300.5	-307.1	429.6	0.00	0.00	0.00
3,480.0	14.91	225.62	3,426.7	-307.7	-314.4	439.9	0.00	0.00	0.00
3,520.0	14.91	225.62	3,465.3	-314.9	-321.8	450.2	0.00	0.00	0.00
3,560.0	14.91	225.62	3,504.0	-322.1	-329.1	460.5	0.00	0.00	0.00
3,600.0	14.91	225.62	3,542.6	-329.3	-336.5	470.8	0.00	0.00	0.00
3,640.0	14.91	225.62	3,581.3	-336.5	-343.8	481.1	0.00	0.00	0.00
3,680.0	14.91	225.62	3,619.9	-343.7	-351.2	491.4	0.00	0.00	0.00
3,720.0	14.91	225.62	3,658.6	-350.9	-358.6	501.7	0.00	0.00	0.00
3,760.0	14.91	225.62	3,697.2	-358.1	-365.9	512.0	0.00	0.00	0.00
3,800.0	14.91	225.62	3,735.9	-365.3	-373.3	522.3	0.00	0.00	0.00
3,840.0	14.91	225.62	3,774.5	-372.5	-380.6	532.6	0.00	0.00	0.00
3,880.0	14.91	225.62	3,813.2	-379.7	-388.0	542.9	0.00	0.00	0.00
3,920.0	14.91	225.62	3,851.8	-386.9	-395.4	553.2	0.00	0.00	0.00
3,960.0	14.91	225.62	3,890.5	-394.1	-402.7	563.5	0.00	0.00	0.00
4,000.0	14.91	225.62	3,929.1	-401.3	-410.1	573.8	0.00	0.00	0.00
4,040.0	14.91	225.62	3,967.8	-408.5	-417.4	584.0	0.00	0.00	0.00
4,080.0	14.91	225.62	4,006.4	-415.7	-424.8	594.3	0.00	0.00	0.00
4,120.0	14.91	225.62	4,045.1	-422.9	-432.1	604.6	0.00	0.00	0.00
4,160.0	14.91	225.62	4,083.7	-430.1	-439.5	614.9	0.00	0.00	0.00
4,200.0	14.91	225.62	4,122.4	-437.3	-446.9	625.2	0.00	0.00	0.00
4,240.0	14.91	225.62	4,161.1	-444.5	-454.2	635.5	0.00	0.00	0.00

Database:	EDM den0-adp01 Server Data	Local Co-ordinate Reference:	Well Abbey D01-32D
Company:	NOBLE ENERGY INC WELD COUNTY CO	TVD Reference:	WELL @ 4742.0ft (Original Well Elev)
Project:	SEC.1-T3N-R64W	MD Reference:	WELL @ 4742.0ft (Original Well Elev)
Site:	Abbey D01-32D Pad Sec.1-T3N-R64W	North Reference:	True
Well:	Abbey D01-32D	Survey Calculation Method:	Minimum Curvature
Wellbore:	Wellbore #1		
Design:	Noble Abbey D01-32D Plan #2 (04-05-10)		

Planned Survey									
Measured Depth (ft)	Inclination (°)	Azimuth (°)	Vertical Depth (ft)	+N/-S (ft)	+E/-W (ft)	Vertical Section (ft)	Dogleg Rate (°/100ft)	Build Rate (°/100ft)	Turn Rate (°/100ft)
4,280.0	14.91	225.62	4,199.7	-451.7	-461.6	645.8	0.00	0.00	0.00
4,320.0	14.91	225.62	4,238.4	-458.9	-468.9	656.1	0.00	0.00	0.00
4,345.2	14.91	225.62	4,262.7	-463.4	-473.6	662.6	0.00	0.00	0.00
4,360.0	14.62	225.62	4,277.0	-466.1	-476.3	666.4	2.00	-2.00	0.00
4,400.0	13.82	225.62	4,315.8	-472.9	-483.3	676.2	2.00	-2.00	0.00
4,440.0	13.02	225.62	4,354.7	-479.4	-489.9	685.5	2.00	-2.00	0.00
4,480.0	12.22	225.62	4,393.7	-485.5	-496.2	694.2	2.00	-2.00	0.00
4,520.0	11.42	225.62	4,432.9	-491.3	-502.0	702.4	2.00	-2.00	0.00
4,560.0	10.62	225.62	4,472.2	-496.6	-507.5	710.1	2.00	-2.00	0.00
4,600.0	9.82	225.62	4,511.5	-501.6	-512.6	717.1	2.00	-2.00	0.00
4,640.0	9.02	225.62	4,551.0	-506.2	-517.2	723.7	2.00	-2.00	0.00
4,680.0	8.22	225.62	4,590.5	-510.4	-521.5	729.7	2.00	-2.00	0.00
4,720.0	7.42	225.62	4,630.2	-514.2	-525.4	735.1	2.00	-2.00	0.00
4,760.0	6.62	225.62	4,669.9	-517.6	-528.9	740.0	2.00	-2.00	0.00
4,800.0	5.82	225.62	4,709.6	-520.6	-532.0	744.3	2.00	-2.00	0.00
4,840.0	5.02	225.62	4,749.4	-523.2	-534.7	748.1	2.00	-2.00	0.00
4,880.0	4.22	225.62	4,789.3	-525.5	-537.0	751.3	2.00	-2.00	0.00
4,920.0	3.42	225.62	4,829.2	-527.4	-538.9	754.0	2.00	-2.00	0.00
4,960.0	2.62	225.62	4,869.2	-528.8	-540.4	756.1	2.00	-2.00	0.00
5,000.0	1.82	225.62	4,909.1	-529.9	-541.5	757.7	2.00	-2.00	0.00
5,040.0	1.02	225.62	4,949.1	-530.6	-542.2	758.6	2.00	-2.00	0.00
5,080.0	0.22	225.62	4,989.1	-530.9	-542.5	759.1	2.00	-2.00	0.00
5,090.9	0.00	0.00	5,000.0	-530.9	-542.5	759.1	2.00	-2.00	0.00
TARGET BHL 2565'FNL, 75'FWL									
5,120.0	0.00	0.00	5,029.1	-530.9	-542.5	759.1	0.00	0.00	0.00
5,160.0	0.00	0.00	5,069.1	-530.9	-542.5	759.1	0.00	0.00	0.00
5,200.0	0.00	0.00	5,109.1	-530.9	-542.5	759.1	0.00	0.00	0.00
5,240.0	0.00	0.00	5,149.1	-530.9	-542.5	759.1	0.00	0.00	0.00
5,280.0	0.00	0.00	5,189.1	-530.9	-542.5	759.1	0.00	0.00	0.00
5,320.0	0.00	0.00	5,229.1	-530.9	-542.5	759.1	0.00	0.00	0.00
5,360.0	0.00	0.00	5,269.1	-530.9	-542.5	759.1	0.00	0.00	0.00
5,400.0	0.00	0.00	5,309.1	-530.9	-542.5	759.1	0.00	0.00	0.00
5,440.0	0.00	0.00	5,349.1	-530.9	-542.5	759.1	0.00	0.00	0.00
5,480.0	0.00	0.00	5,389.1	-530.9	-542.5	759.1	0.00	0.00	0.00
5,520.0	0.00	0.00	5,429.1	-530.9	-542.5	759.1	0.00	0.00	0.00
5,560.0	0.00	0.00	5,469.1	-530.9	-542.5	759.1	0.00	0.00	0.00
5,600.0	0.00	0.00	5,509.1	-530.9	-542.5	759.1	0.00	0.00	0.00
5,640.0	0.00	0.00	5,549.1	-530.9	-542.5	759.1	0.00	0.00	0.00
5,680.0	0.00	0.00	5,589.1	-530.9	-542.5	759.1	0.00	0.00	0.00
5,720.0	0.00	0.00	5,629.1	-530.9	-542.5	759.1	0.00	0.00	0.00
5,760.0	0.00	0.00	5,669.1	-530.9	-542.5	759.1	0.00	0.00	0.00
5,800.0	0.00	0.00	5,709.1	-530.9	-542.5	759.1	0.00	0.00	0.00
5,840.0	0.00	0.00	5,749.1	-530.9	-542.5	759.1	0.00	0.00	0.00
5,880.0	0.00	0.00	5,789.1	-530.9	-542.5	759.1	0.00	0.00	0.00
5,920.0	0.00	0.00	5,829.1	-530.9	-542.5	759.1	0.00	0.00	0.00
5,960.0	0.00	0.00	5,869.1	-530.9	-542.5	759.1	0.00	0.00	0.00
6,000.0	0.00	0.00	5,909.1	-530.9	-542.5	759.1	0.00	0.00	0.00
6,040.0	0.00	0.00	5,949.1	-530.9	-542.5	759.1	0.00	0.00	0.00
6,080.0	0.00	0.00	5,989.1	-530.9	-542.5	759.1	0.00	0.00	0.00
6,120.0	0.00	0.00	6,029.1	-530.9	-542.5	759.1	0.00	0.00	0.00
6,160.0	0.00	0.00	6,069.1	-530.9	-542.5	759.1	0.00	0.00	0.00
6,200.0	0.00	0.00	6,109.1	-530.9	-542.5	759.1	0.00	0.00	0.00
6,240.0	0.00	0.00	6,149.1	-530.9	-542.5	759.1	0.00	0.00	0.00

Database:	EDM den0-adp01 Server Data	Local Co-ordinate Reference:	Well Abbey D01-32D
Company:	NOBLE ENERGY INC WELD COUNTY CO	TVD Reference:	WELL @ 4742.0ft (Original Well Elev)
Project:	SEC.1-T3N-R64W	MD Reference:	WELL @ 4742.0ft (Original Well Elev)
Site:	Abbey D01-32D Pad Sec.1-T3N-R64W	North Reference:	True
Well:	Abbey D01-32D	Survey Calculation Method:	Minimum Curvature
Wellbore:	Wellbore #1		
Design:	Noble Abbey D01-32D Plan #2 (04-05-10)		

Planned Survey									
Measured Depth (ft)	Inclination (°)	Azimuth (°)	Vertical Depth (ft)	+N/-S (ft)	+E/-W (ft)	Vertical Section (ft)	Dogleg Rate (°/100ft)	Build Rate (°/100ft)	Turn Rate (°/100ft)
6,280.0	0.00	0.00	6,189.1	-530.9	-542.5	759.1	0.00	0.00	0.00
6,320.0	0.00	0.00	6,229.1	-530.9	-542.5	759.1	0.00	0.00	0.00
6,360.0	0.00	0.00	6,269.1	-530.9	-542.5	759.1	0.00	0.00	0.00
6,400.0	0.00	0.00	6,309.1	-530.9	-542.5	759.1	0.00	0.00	0.00
6,440.0	0.00	0.00	6,349.1	-530.9	-542.5	759.1	0.00	0.00	0.00
6,480.0	0.00	0.00	6,389.1	-530.9	-542.5	759.1	0.00	0.00	0.00
6,520.0	0.00	0.00	6,429.1	-530.9	-542.5	759.1	0.00	0.00	0.00
6,560.0	0.00	0.00	6,469.1	-530.9	-542.5	759.1	0.00	0.00	0.00
6,600.0	0.00	0.00	6,509.1	-530.9	-542.5	759.1	0.00	0.00	0.00
6,640.0	0.00	0.00	6,549.1	-530.9	-542.5	759.1	0.00	0.00	0.00
6,640.9	0.00	0.00	6,550.0	-530.9	-542.5	759.1	0.00	0.00	0.00
NIORARA - TARGET CIRCLE 2565'FNL, 75'FWL									
6,680.0	0.00	0.00	6,589.1	-530.9	-542.5	759.1	0.00	0.00	0.00
6,720.0	0.00	0.00	6,629.1	-530.9	-542.5	759.1	0.00	0.00	0.00
6,760.0	0.00	0.00	6,669.1	-530.9	-542.5	759.1	0.00	0.00	0.00
6,800.0	0.00	0.00	6,709.1	-530.9	-542.5	759.1	0.00	0.00	0.00
6,840.0	0.00	0.00	6,749.1	-530.9	-542.5	759.1	0.00	0.00	0.00
6,880.0	0.00	0.00	6,789.1	-530.9	-542.5	759.1	0.00	0.00	0.00
6,920.0	0.00	0.00	6,829.1	-530.9	-542.5	759.1	0.00	0.00	0.00
6,932.9	0.00	0.00	6,842.0	-530.9	-542.5	759.1	0.00	0.00	0.00
CODELL									
6,960.0	0.00	0.00	6,869.1	-530.9	-542.5	759.1	0.00	0.00	0.00
7,000.0	0.00	0.00	6,909.1	-530.9	-542.5	759.1	0.00	0.00	0.00
7,040.0	0.00	0.00	6,949.1	-530.9	-542.5	759.1	0.00	0.00	0.00
7,080.0	0.00	0.00	6,989.1	-530.9	-542.5	759.1	0.00	0.00	0.00
7,082.9	0.00	0.00	6,992.0	-530.9	-542.5	759.1	0.00	0.00	0.00
HARDLINES 90'S & 75'W OF BHL									

Targets									
Target Name	Dip Angle (°)	Dip Dir. (°)	TVD (ft)	+N/-S (ft)	+E/-W (ft)	Northing (ft)	Easting (ft)	Latitude	Longitude
- hit/miss target									
- Shape									
TARGET CIRCLE 2565'FNL, 75'FWL	0.00	0.00	6,550.0	-530.9	-542.5	1,337,169.34	3,276,703.04	40° 15' 16.858 N	104° 30' 30.937 W
- plan hits target center									
- Circle (radius 75.0)									
HARDLINES 90'S & 75'W OF BHL	0.00	0.00	6,992.0	-620.9	-617.5	1,337,078.51	3,276,629.06	40° 15' 15.968 N	104° 30' 31.904 W
- plan misses target center by 117.1ft at 7082.9ft MD (6992.0 TVD, -530.9 N, -542.5 E)									
- Polygon									
Point 1			6,992.0	0.0	0.0	1,337,078.51	3,276,629.06		
Point 2			6,992.0	0.0	200.0	1,337,080.75	3,276,829.04		
Point 3			6,992.0	0.0	0.0	1,337,078.51	3,276,629.06		
Point 4			6,992.0	200.0	0.0	1,337,278.49	3,276,626.82		
TARGET BHL 2565'FNL, 75'FWL	0.00	0.00	5,000.0	-530.9	-542.5	1,337,169.32	3,276,703.00	40° 15' 16.857 N	104° 30' 30.938 W
- plan hits target center									
- Point									

Database:	EDM den0-adp01 Server Data	Local Co-ordinate Reference:	Well Abbey D01-32D
Company:	NOBLE ENERGY INC WELD COUNTY CO	TVD Reference:	WELL @ 4742.0ft (Original Well Elev)
Project:	SEC.1-T3N-R64W	MD Reference:	WELL @ 4742.0ft (Original Well Elev)
Site:	Abbey D01-32D Pad Sec.1-T3N-R64W	North Reference:	True
Well:	Abbey D01-32D	Survey Calculation Method:	Minimum Curvature
Wellbore:	Wellbore #1		
Design:	Noble Abbey D01-32D Plan #2 (04-05-10)		

Formations						
	Measured Depth (ft)	Vertical Depth (ft)	Name	Lithology	Dip (°)	Dip Direction (°)
	6,640.9	6,550.0	NIOBRARA		0.00	
	6,932.9	6,842.0	CODELL		0.00	
		7,251.0	D-SAND		0.00	
		7,313.0	J-SAND		0.00	

**NOBLE ENERGY INC WELD
COUNTY CO**

SEC.1-T3N-R64W

Abbey D01-32D Pad Sec.1-T3N-R64W

Abbey D01-32D

Wellbore #1

Noble Abbey D01-32D Plan #2 (04-05-10)

Anticollision Report

05 April, 2010

Company:	NOBLE ENERGY INC WELD COUNTY CO	Local Co-ordinate Reference:	Well Abbey D01-32D
Project:	SEC.1-T3N-R64W	TVD Reference:	WELL @ 4742.0ft (Original Well Elev)
Reference Site:	Abbey D01-32D Pad Sec.1-T3N-R64W	MD Reference:	WELL @ 4742.0ft (Original Well Elev)
Site Error:	0.0ft	North Reference:	True
Reference Well:	Abbey D01-32D	Survey Calculation Method:	Minimum Curvature
Well Error:	0.0ft	Output errors are at	2.00 sigma
Reference Wellbore	Wellbore #1	Database:	EDM den0-adp01 Server Data
Reference Design:	Noble Abbey D01-32D Plan #2 (04-05-10)	Offset TVD Reference:	Offset Datum

Reference	Noble Abbey D01-32D Plan #2 (04-05-10)		
Filter type:	NO GLOBAL FILTER: Using user defined selection & filtering criteria		
Interpolation Method:	MD Interval 100.0ft	Error Model:	ISCWSA
Depth Range:	Unlimited	Scan Method:	Closest Approach 3D
Results Limited by:	Maximum center-center distance of 2,000.0ft	Error Surface:	Elliptical Conic
Warning Levels Evaluated at:	2.00 Sigma		

Survey Tool Program	Date 4/5/2010			
From (ft)	To (ft)	Survey (Wellbore)	Tool Name	Description
0.0	7,082.9	Noble Abbey D01-32D Plan #2 (04-05-10)	MWD	MWD - Standard

Summary						
Site Name	Reference Measured Depth (ft)	Offset Measured Depth (ft)	Distance Between Centres (ft)	Distance Between Ellipses (ft)	Separation Factor	Warning
Offset Well - Wellbore - Design						
Abbey D01-32D Pad Sec.1-T3N-R64W						
Abbey D1-5 (Exist.) - Wellbore #1 - Design #1	1,400.0	1,400.0	44.3	38.2	7.327	CC
Abbey D1-5 (Exist.) - Wellbore #1 - Design #1	1,500.0	1,500.0	44.6	38.1	6.896	ES
Abbey D1-5 (Exist.) - Wellbore #1 - Design #1	1,600.0	1,599.8	46.0	39.1	6.688	SF

Offset Design Abbey D01-32D Pad Sec.1-T3N-R64W - Abbey D1-5 (Exist.) - Wellbore #1 - Design #1											
Survey Program: 0-MWD											
Reference Offset Semi Major Axis Distance											
Measured Depth (ft)	Vertical Depth (ft)	Measured Depth (ft)	Vertical Depth (ft)	Reference (ft)	Offset (ft)	Highside Toolface (°)	Offset Wellbore Centre +N/-S (ft)	+E/-W (ft)	Between Centres (ft)	Between Ellipses (ft)	Minimum Separation (ft)
0.0	0.0	0.0	0.0	0.0	0.0	-34.59	36.4	-25.1	44.3		
100.0	100.0	100.0	100.0	0.1	0.1	-34.59	36.4	-25.1	44.3	44.1	0.20
200.0	200.0	200.0	200.0	0.3	0.3	-34.59	36.4	-25.1	44.3	43.6	0.65
300.0	300.0	300.0	300.0	0.5	0.5	-34.59	36.4	-25.1	44.3	43.2	1.09
400.0	400.0	400.0	400.0	0.8	0.8	-34.59	36.4	-25.1	44.3	42.7	1.54
500.0	500.0	500.0	500.0	1.0	1.0	-34.59	36.4	-25.1	44.3	42.3	1.99
600.0	600.0	600.0	600.0	1.2	1.2	-34.59	36.4	-25.1	44.3	41.8	2.44
700.0	700.0	700.0	700.0	1.4	1.4	-34.59	36.4	-25.1	44.3	41.4	2.89
800.0	800.0	800.0	800.0	1.7	1.7	-34.59	36.4	-25.1	44.3	40.9	3.34
900.0	900.0	900.0	900.0	1.9	1.9	-34.59	36.4	-25.1	44.3	40.5	3.79
1,000.0	1,000.0	1,000.0	1,000.0	2.1	2.1	-34.59	36.4	-25.1	44.3	40.0	4.24
1,100.0	1,100.0	1,100.0	1,100.0	2.3	2.3	-34.59	36.4	-25.1	44.3	39.6	4.69
1,200.0	1,200.0	1,200.0	1,200.0	2.6	2.6	-34.59	36.4	-25.1	44.3	39.1	5.14
1,300.0	1,300.0	1,300.0	1,300.0	2.8	2.8	-34.59	36.4	-25.1	44.3	38.7	5.59
1,400.0	1,400.0	1,400.0	1,400.0	3.0	3.0	-34.59	36.4	-25.1	44.3	38.2	6.04
1,500.0	1,500.0	1,500.0	1,500.0	3.2	3.2	102.00	36.4	-25.1	44.6	38.1	6.46
1,600.0	1,599.8	1,599.8	1,599.8	3.4	3.5	108.36	36.4	-25.1	46.0	39.1	6.87
1,700.0	1,699.5	1,699.5	1,699.5	3.6	3.7	117.90	36.4	-25.1	49.4	42.1	7.29
1,800.0	1,798.7	1,798.7	1,798.7	3.8	3.9	128.80	36.4	-25.1	56.2	48.5	7.70
1,900.0	1,897.5	1,897.5	1,897.5	4.1	4.1	139.06	36.4	-25.1	67.1	59.0	8.11
2,000.0	1,995.6	1,995.6	1,995.6	4.3	4.4	147.56	36.4	-25.1	82.6	74.1	8.50
2,100.0	2,093.1	2,093.1	2,093.1	4.7	4.6	154.12	36.4	-25.1	102.4	93.5	8.89
2,200.0	2,189.8	2,189.8	2,189.8	5.0	4.8	159.07	36.4	-25.1	125.8	116.5	9.29
2,300.0	2,286.4	2,286.4	2,286.4	5.4	5.0	162.57	36.4	-25.1	150.2	140.5	9.72

CC - Min centre to center distance or convergent point, SF - min separation factor, ES - min ellipse separation

Company:	NOBLE ENERGY INC WELD COUNTY CO	Local Co-ordinate Reference:	Well Abbey D01-32D
Project:	SEC.1-T3N-R64W	TVD Reference:	WELL @ 4742.0ft (Original Well Elev)
Reference Site:	Abbey D01-32D Pad Sec.1-T3N-R64W	MD Reference:	WELL @ 4742.0ft (Original Well Elev)
Site Error:	0.0ft	North Reference:	True
Reference Well:	Abbey D01-32D	Survey Calculation Method:	Minimum Curvature
Well Error:	0.0ft	Output errors are at	2.00 sigma
Reference Wellbore	Wellbore #1	Database:	EDM den0-adp01 Server Data
Reference Design:	Noble Abbey D01-32D Plan #2 (04-05-10)	Offset TVD Reference:	Offset Datum

Offset Design Abbey D01-32D Pad Sec.1-T3N-R64W - Abbey D1-5 (Exist.) - Wellbore #1 - Design #1													Offset Site Error:	0.0 ft
Survey Program: 0-MWD													Offset Well Error:	0.0 ft
Reference		Offset		Semi Major Axis			Distance							Warning
Measured Depth (ft)	Vertical Depth (ft)	Measured Depth (ft)	Vertical Depth (ft)	Reference (ft)	Offset (ft)	Highside Toolface (°)	Offset Wellbore Centre +N/-S (ft)	+E/-W (ft)	Between Centres (ft)	Between Ellipses (ft)	Minimum Separation (ft)	Separation Factor		
2,400.0	2,383.0	2,383.0	2,383.0	5.9	5.2	165.09	36.4	-25.1	175.0	164.8	10.16	17.219		
2,500.0	2,479.7	2,479.7	2,479.7	6.3	5.4	166.98	36.4	-25.1	200.0	189.4	10.61	18.854		
2,600.0	2,576.3	2,576.3	2,576.3	6.8	5.7	168.46	36.4	-25.1	225.2	214.2	11.06	20.362		
2,700.0	2,672.9	2,672.9	2,672.9	7.3	5.9	169.63	36.4	-25.1	250.5	239.0	11.52	21.752		
2,800.0	2,769.6	2,769.6	2,769.6	7.8	6.1	170.59	36.4	-25.1	275.9	263.9	11.98	23.035		
2,900.0	2,866.2	2,866.2	2,866.2	8.2	6.3	171.39	36.4	-25.1	301.3	288.9	12.44	24.221		
3,000.0	2,962.8	2,962.8	2,962.8	8.7	6.5	172.07	36.4	-25.1	326.8	313.9	12.91	25.320		
3,100.0	3,059.5	3,059.5	3,059.5	9.3	6.7	172.65	36.4	-25.1	352.4	339.0	13.38	26.339		
3,200.0	3,156.1	3,156.1	3,156.1	9.8	7.0	173.14	36.4	-25.1	377.9	364.1	13.85	27.286		
3,300.0	3,252.7	3,252.7	3,252.7	10.3	7.2	173.58	36.4	-25.1	403.5	389.2	14.32	28.168		
3,400.0	3,349.4	3,349.4	3,349.4	10.8	7.4	173.97	36.4	-25.1	429.1	414.3	14.80	28.990		
3,500.0	3,446.0	3,446.0	3,446.0	11.3	7.6	174.31	36.4	-25.1	454.7	439.4	15.28	29.759		
3,600.0	3,542.6	3,542.6	3,542.6	11.9	7.8	174.61	36.4	-25.1	480.3	464.6	15.76	30.480		
3,700.0	3,639.2	3,639.2	3,639.2	12.4	8.1	174.88	36.4	-25.1	506.0	489.7	16.24	31.155		
3,800.0	3,735.9	3,735.9	3,735.9	12.9	8.3	175.13	36.4	-25.1	531.6	514.9	16.72	31.790		
3,900.0	3,832.5	3,832.5	3,832.5	13.4	8.5	175.36	36.4	-25.1	557.3	540.0	17.21	32.387		
4,000.0	3,929.1	3,929.1	3,929.1	14.0	8.7	175.56	36.4	-25.1	582.9	565.2	17.69	32.950		
4,100.0	4,025.8	4,025.8	4,025.8	14.5	8.9	175.75	36.4	-25.1	608.6	590.4	18.18	33.481		
4,200.0	4,122.4	4,122.4	4,122.4	15.0	9.1	175.92	36.4	-25.1	634.3	615.6	18.66	33.983		
4,300.0	4,219.0	4,219.0	4,219.0	15.6	9.4	176.08	36.4	-25.1	659.9	640.8	19.15	34.458		
4,400.0	4,315.8	4,315.8	4,315.8	16.1	9.6	176.24	36.4	-25.1	685.1	665.4	19.68	34.809		
4,500.0	4,413.3	4,413.3	4,413.3	16.4	9.8	176.39	36.4	-25.1	707.3	687.0	20.22	34.984		
4,600.0	4,511.5	4,511.5	4,511.5	16.8	10.0	176.51	36.4	-25.1	726.0	705.3	20.72	35.031		
4,700.0	4,610.3	4,610.3	4,610.3	17.1	10.2	176.60	36.4	-25.1	741.3	720.1	21.20	34.960		
4,800.0	4,709.6	4,709.6	4,709.6	17.3	10.5	176.66	36.4	-25.1	753.1	731.5	21.65	34.780		
4,900.0	4,809.3	4,809.3	4,809.3	17.5	10.7	176.71	36.4	-25.1	761.5	739.4	22.07	34.500		
5,000.0	4,909.1	4,909.1	4,909.1	17.7	10.9	176.74	36.4	-25.1	766.4	744.0	22.46	34.124		
5,100.0	5,009.1	5,009.1	5,009.1	17.8	11.1	42.36	36.4	-25.1	767.9	745.0	22.82	33.643		
5,200.0	5,109.1	5,109.1	5,109.1	17.9	11.4	42.36	36.4	-25.1	767.9	744.6	23.23	33.053		
5,300.0	5,209.1	5,209.1	5,209.1	18.1	11.6	42.36	36.4	-25.1	767.9	744.2	23.64	32.481		
5,400.0	5,309.1	5,309.1	5,309.1	18.2	11.8	42.36	36.4	-25.1	767.9	743.8	24.05	31.926		
5,500.0	5,409.1	5,409.1	5,409.1	18.3	12.0	42.36	36.4	-25.1	767.9	743.4	24.46	31.389		
5,600.0	5,509.1	5,509.1	5,509.1	18.4	12.3	42.36	36.4	-25.1	767.9	743.0	24.88	30.868		
5,700.0	5,609.1	5,609.1	5,609.1	18.6	12.5	42.36	36.4	-25.1	767.9	742.6	25.29	30.362		
5,800.0	5,709.1	5,709.1	5,709.1	18.7	12.7	42.36	36.4	-25.1	767.9	742.2	25.71	29.872		
5,900.0	5,809.1	5,809.1	5,809.1	18.8	12.9	42.36	36.4	-25.1	767.9	741.7	26.12	29.395		
6,000.0	5,909.1	5,909.1	5,909.1	19.0	13.2	42.36	36.4	-25.1	767.9	741.3	26.54	28.933		
6,100.0	6,009.1	6,009.1	6,009.1	19.1	13.4	42.36	36.4	-25.1	767.9	740.9	26.96	28.484		
6,200.0	6,109.1	6,109.1	6,109.1	19.3	13.6	42.36	36.4	-25.1	767.9	740.5	27.38	28.048		
6,300.0	6,209.1	6,209.1	6,209.1	19.4	13.8	42.36	36.4	-25.1	767.9	740.1	27.80	27.624		
6,400.0	6,309.1	6,309.1	6,309.1	19.5	14.1	42.36	36.4	-25.1	767.9	739.6	28.22	27.211		
6,500.0	6,409.1	6,409.1	6,409.1	19.7	14.3	42.36	36.4	-25.1	767.9	739.2	28.64	26.810		
6,600.0	6,509.1	6,509.1	6,509.1	19.8	14.5	42.36	36.4	-25.1	767.9	738.8	29.06	26.420		
6,700.0	6,609.1	6,609.1	6,609.1	20.0	14.7	42.36	36.4	-25.1	767.9	738.4	29.49	26.041		
6,800.0	6,709.1	6,709.1	6,709.1	20.1	15.0	42.36	36.4	-25.1	767.9	738.0	29.91	25.671		
6,900.0	6,809.1	6,809.1	6,809.1	20.3	15.2	42.36	36.4	-25.1	767.9	737.5	30.34	25.312		
7,000.0	6,909.1	6,909.1	6,909.1	20.4	15.4	42.36	36.4	-25.1	767.9	737.1	30.76	24.962		
7,082.9	6,992.0	6,992.0	6,992.0	20.6	15.6	42.36	36.4	-25.1	767.9	736.8	31.12	24.678		

Company: NOBLE ENERGY INC WELD COUNTY CO
Project: SEC.1-T3N-R64W
Reference Site: Abbey D01-32D Pad Sec.1-T3N-R64W
Site Error: 0.0ft
Reference Well: Abbey D01-32D
Well Error: 0.0ft
Reference Wellbore: Wellbore #1
Reference Design: Noble Abbey D01-32D Plan #2 (04-05-10)

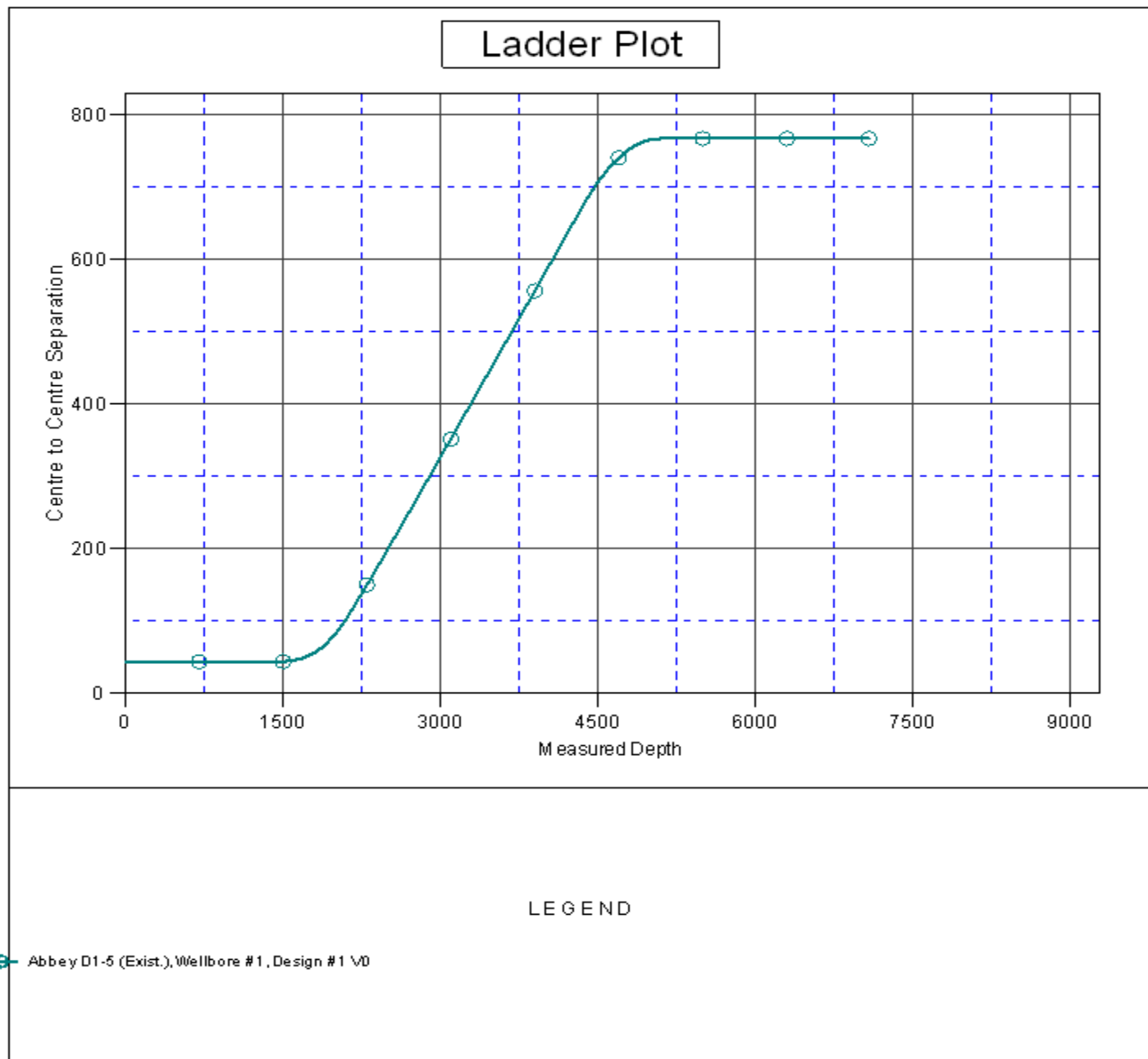
Local Co-ordinate Reference: Well Abbey D01-32D
TVD Reference: WELL @ 4742.0ft (Original Well Elev)
MD Reference: WELL @ 4742.0ft (Original Well Elev)
North Reference: True
Survey Calculation Method: Minimum Curvature
Output errors are at 2.00 sigma
Database: EDM den0-adp01 Server Data
Offset TVD Reference: Offset Datum

Reference Depths are relative to WELL @ 4742.0ft (Original Well Elev) Coordinates are relative to: Abbey D01-32D

Offset Depths are relative to Offset Datum

Coordinate System is US State Plane 1983, Colorado Northern Zone

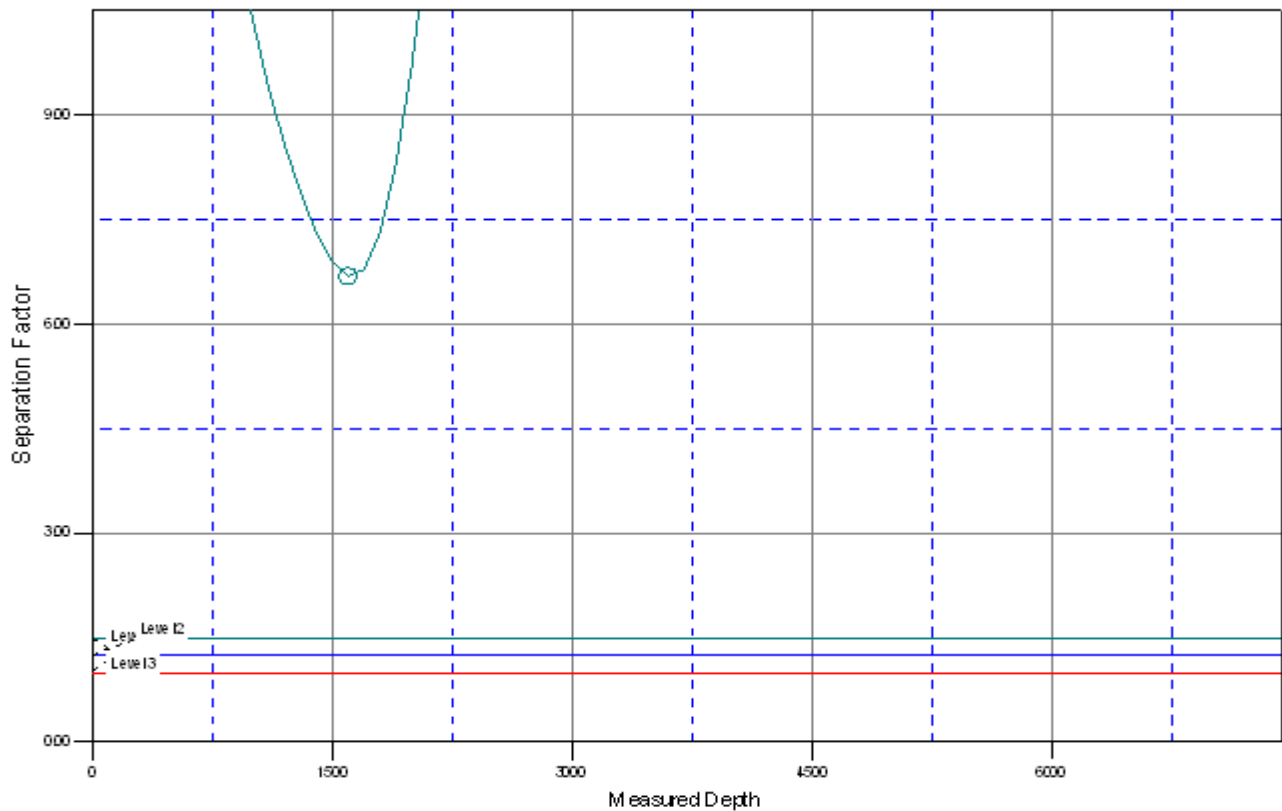
Grid Convergence at Surface is: 0.64°



Company:	NOBLE ENERGY INC WELD COUNTY CO	Local Co-ordinate Reference:	Well Abbey D01-32D
Project:	SEC.1-T3N-R64W	TVD Reference:	WELL @ 4742.0ft (Original Well Elev)
Reference Site:	Abbey D01-32D Pad Sec.1-T3N-R64W	MD Reference:	WELL @ 4742.0ft (Original Well Elev)
Site Error:	0.0ft	North Reference:	True
Reference Well:	Abbey D01-32D	Survey Calculation Method:	Minimum Curvature
Well Error:	0.0ft	Output errors are at	2.00 sigma
Reference Wellbore	Wellbore #1	Database:	EDM den0-adp01 Server Data
Reference Design:	Noble Abbey D01-32D Plan #2 (04-05-10)	Offset TVD Reference:	Offset Datum

Reference Depths are relative to WELL @ 4742.0ft (Original Well Elev) Coordinates are relative to: Abbey D01-32D
Offset Depths are relative to Offset Datum Coordinate System is US State Plane 1983, Colorado Northern Zone
Central Meridian is 105° 30' 0.000 W ° Grid Convergence at Surface is: 0.64°

Separation Factor Plot



LEGEND

Abbey D1-5 (Exist.), Wellbore #1, Design #1 \V0