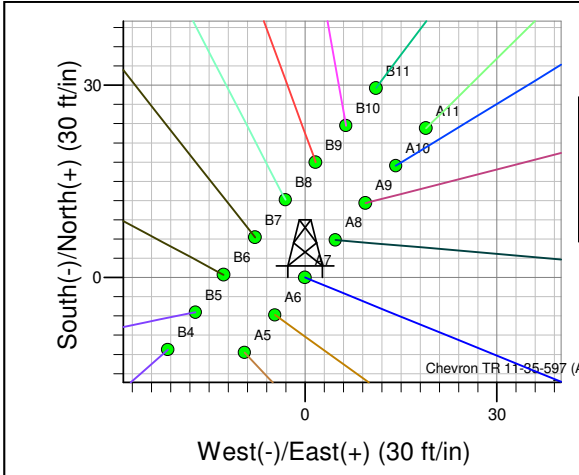
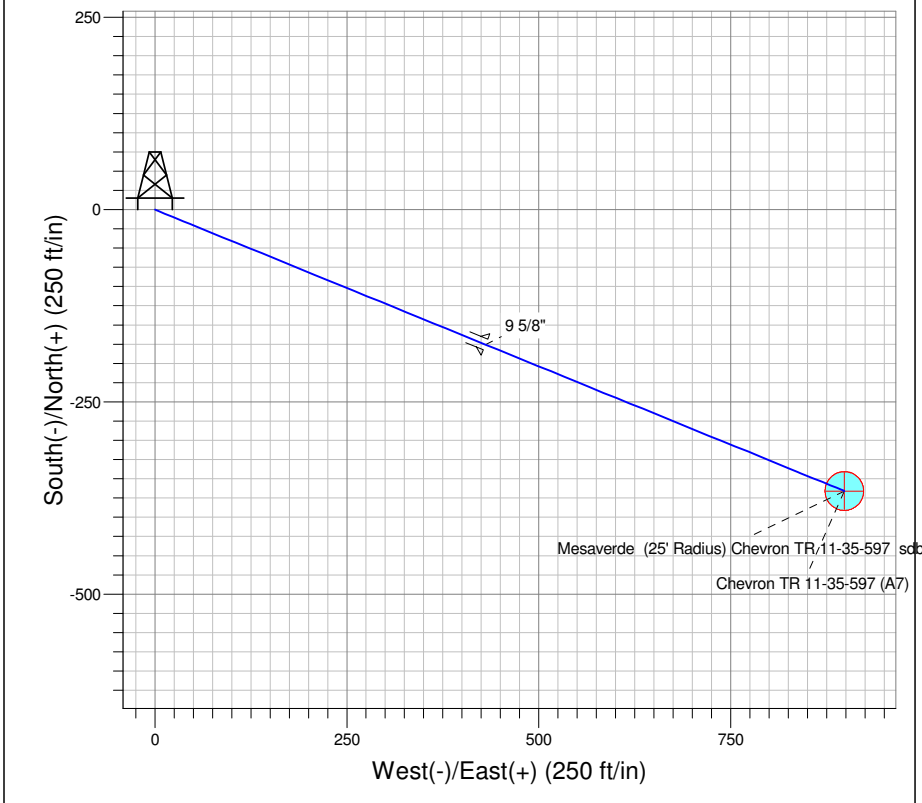


Well Name: Chevron TR 11-35-597
 Pad Location: TR 44-27-597 Pad
 NAD 1927 (NADCON CONUS) , Colorado Central 502
 RKB: RKB @ 8493.0ft (Frontier 11 (28' RKB))
 Ground Elevation: 8465.0
 Rig Name: Frontier 11 (28' RKB)

+N/-S	+E/-W	Northing	Easting	Latitude	Longitude	Slot
0.0	0.0	647178.80	1223509.30	39° 34' 40.814 N	108° 15' 18.422 W	A7



Project: TR 27-05S-097W
 Site: TR 44-27-597 Pad
 Well: Chevron TR 11-35-597
 Plan: Plan #2 21Jul09 sdb

Azimuths to True North
 Magnetic North: 11.01°
 Magnetic Field
 Strength: 52689.9nT
 Dip Angle: 65.88°
 Date: 2/28/2007
 Model: IGRF2005-10

SECTION DETAILS									
MD	Inc	Azi	TVD	+N/-S	+E/-W	DLeg	TFace	VSec	Target
0.0	0.00	0.00	0.0	0.0	0.0	0.00	0.00	0.0	
120.0	0.00	0.00	120.0	0.0	0.0	0.00	0.00	0.0	
652.5	10.65	112.16	649.5	-18.6	45.7	2.00	112.16	49.4	
5276.8	10.65	112.16	5194.1	-341.0	837.2	0.00	0.00	904.0	
5986.8	0.00	0.00	5900.0	-365.8	898.1	1.50	180.00	969.8	Mesaverde (25' Radius) Chevron TR 11-35-597 sdb
9355.8	0.00	0.00	9269.0	-365.8	898.1	0.00	0.00	969.8	

TVD	MD	Annotation
120.0	120.0	Start Building at 2.00 deg at 120'.
649.5	652.5	Hold 10.65 deg at 653' MD
5194.1	5276.8	Start Dropping angle at 5277' MD at 1.5 deg.
5900.0	5986.8	Maintain vertical in target at 5987' MD
9269.0	9355.8	TD at 9356

PICEANCE HL

TR 27-05S-097W

TR 44-27-597 Pad

Chevron TR 11-35-597 - Slot A7

Chevron TR 11-35-597

Plan: Plan #2 21Jul09 sdb

Standard Planning Report - Geographic

04 September, 2009

Williams Production RMT Company

Planning Report - Geographic

Database:	EDMDB_COMPASS	Local Co-ordinate Reference:	Well Chevron TR 11-35-597 (A7) - Slot A7
Company:	PICEANCE HL	TVD Reference:	RKB @ 8493.0ft (Frontier 11 (28' RKB))
Project:	TR 27-05S-097W	MD Reference:	RKB @ 8493.0ft (Frontier 11 (28' RKB))
Site:	TR 44-27-597 Pad	North Reference:	True
Well:	Chevron TR 11-35-597	Survey Calculation Method:	Minimum Curvature
Wellbore:	Chevron TR 11-35-597		
Design:	Plan #2 21Jul09 sdb		

Project	TR 27-05S-097W, Garfield County, CO, TR 27-05S-097W		
Map System:	US State Plane 1927 (Exact solution)	System Datum:	Mean Sea Level
Geo Datum:	NAD 1927 (NADCON CONUS)		
Map Zone:	Colorado Central 502		Using geodetic scale factor

Site	TR 44-27-597 Pad		
Site Position:		Northing:	647,186.00 ft
From:	Map	Easting:	1,223,489.30 ft
Position Uncertainty:	0.0 ft	Slot Radius:	in
		Latitude:	39° 34' 40.880 N
		Longitude:	108° 15' 18.681 W
		Grid Convergence:	-1.74 °

Well	Chevron TR 11-35-597 - Slot A7		
Well Position	+N/-S	0.0 ft	Northing: 647,178.80 ft
	+E/-W	0.0 ft	Easting: 1,223,509.30 ft
Position Uncertainty	0.0 ft	Wellhead Elevation:	ft
		Latitude:	39° 34' 40.814 N
		Longitude:	108° 15' 18.422 W
		Ground Level:	8,465.0 ft

Wellbore	Chevron TR 11-35-597				
Magnetics	Model Name	Sample Date	Declination (°)	Dip Angle (°)	Field Strength (nT)
	IGRF2005-10	2/28/2007	11.01	65.88	52,690

Design	Plan #2 21Jul09 sdb			
Audit Notes:				
Version:	Phase:	PLAN	Tie On Depth:	0.0
Vertical Section:	Depth From (TVD) (ft)	+N/-S (ft)	+E/-W (ft)	Direction (°)
	0.0	0.0	0.0	112.16

Plan Sections										
Measured Depth (ft)	Inclination (°)	Azimuth (°)	Vertical Depth (ft)	+N/-S (ft)	+E/-W (ft)	Dogleg Rate (°/100ft)	Build Rate (°/100ft)	Turn Rate (°/100ft)	TFO (°)	Target
0.0	0.00	0.00	0.0	0.0	0.0	0.00	0.00	0.00	0.00	
120.0	0.00	0.00	120.0	0.0	0.0	0.00	0.00	0.00	0.00	
652.5	10.65	112.16	649.5	-18.6	45.7	2.00	2.00	0.00	112.16	
5,276.8	10.65	112.16	5,194.1	-341.0	837.2	0.00	0.00	0.00	0.00	
5,986.8	0.00	0.00	5,900.0	-365.8	898.1	1.50	-1.50	0.00	180.00	Mesaverde (25' Radii
9,355.8	0.00	0.00	9,269.0	-365.8	898.1	0.00	0.00	0.00	0.00	

Williams Production RMT Company

Planning Report - Geographic

Database:	EDMDB_COMPASS	Local Co-ordinate Reference:	Well Chevron TR 11-35-597 (A7) - Slot A7
Company:	PICEANCE HL	TVD Reference:	RKB @ 8493.0ft (Frontier 11 (28' RKB))
Project:	TR 27-05S-097W	MD Reference:	RKB @ 8493.0ft (Frontier 11 (28' RKB))
Site:	TR 44-27-597 Pad	North Reference:	True
Well:	Chevron TR 11-35-597	Survey Calculation Method:	Minimum Curvature
Wellbore:	Chevron TR 11-35-597		
Design:	Plan #2 21Jul09 sdb		

Planned Survey									
Measured Depth (ft)	Inclination (°)	Azimuth (°)	Vertical Depth (ft)	+N/-S (ft)	+E/-W (ft)	Map Northing (ft)	Map Easting (ft)	Latitude	Longitude
0.0	0.00	0.00	0.0	0.0	0.0	647,178.80	1,223,509.30	39° 34' 40.814 N	108° 15' 18.422 W
120.0	0.00	0.00	120.0	0.0	0.0	647,178.80	1,223,509.30	39° 34' 40.814 N	108° 15' 18.422 W
Start Building at 2.00 deg at 120'.									
652.5	10.65	112.16	649.5	-18.6	45.7	647,158.81	1,223,554.42	39° 34' 40.630 N	108° 15' 17.839 W
Hold 10.65 deg at 653' MD									
2,651.5	10.65	112.16	2,614.0	-158.0	387.8	647,009.13	1,223,892.17	39° 34' 39.253 N	108° 15' 13.469 W
Wasatch									
2,902.0	10.65	112.16	2,860.2	-175.5	430.7	646,990.37	1,223,934.50	39° 34' 39.080 N	108° 15' 12.922 W
9 5/8"									
4,460.7	10.65	112.16	4,392.0	-284.1	697.5	646,873.67	1,224,197.85	39° 34' 38.006 N	108° 15' 9.515 W
G' Sand									
4,637.7	10.65	112.16	4,566.0	-296.5	727.8	646,860.41	1,224,227.76	39° 34' 37.884 N	108° 15' 9.128 W
Ft. Union									
5,276.8	10.65	112.16	5,194.1	-341.0	837.2	646,812.56	1,224,335.74	39° 34' 37.444 N	108° 15' 7.731 W
Start Dropping angle at 5277' MD at 1.5 deg.									
5,986.8	0.00	0.00	5,900.0	-365.8	898.1	646,785.90	1,224,395.90	39° 34' 37.199 N	108° 15' 6.952 W
Maintain vertical in target at 5987' MD - Mesaverde - Mesaverde (25' Radius) Chevron TR 11-35-597 sdb									
6,382.8	0.00	0.00	6,296.0	-365.8	898.1	646,785.90	1,224,395.90	39° 34' 37.199 N	108° 15' 6.952 W
Top Gas									
8,595.8	0.00	0.00	8,509.0	-365.8	898.1	646,785.90	1,224,395.90	39° 34' 37.199 N	108° 15' 6.952 W
Cameo Coals									
8,955.8	0.00	0.00	8,869.0	-365.8	898.1	646,785.90	1,224,395.90	39° 34' 37.199 N	108° 15' 6.952 W
Rollins SS									
9,355.8	0.00	0.00	9,269.0	-365.8	898.1	646,785.90	1,224,395.90	39° 34' 37.199 N	108° 15' 6.952 W
TD at 9356 - TD									

Targets									
Target Name	Dip Angle (°)	Dip Dir. (°)	TVD (ft)	+N/-S (ft)	+E/-W (ft)	Northing (ft)	Easting (ft)	Latitude	Longitude
- hit/miss target									
- Shape									
Mesaverde (25' Radius)	0.00	0.00	6,058.0	-470.2	954.0	646,679.90	1,224,448.60	39° 34' 36.167 N	108° 15' 6.239 W
- plan misses by 118.4ft at 6144.8ft MD (6058.0 TVD, -365.8 N, 898.1 E)									
- Circle (radius 25.0)									
Mesaverde (25' Radius)	0.00	0.00	5,900.0	-365.8	898.1	646,785.90	1,224,395.90	39° 34' 37.199 N	108° 15' 6.952 W
- plan hits target									
- Circle (radius 25.0)									

Casing Points					
Measured Depth (ft)	Vertical Depth (ft)	Name	Casing Diameter (in)	Hole Diameter (in)	
2,902.0	2,860.2	9 5/8"	9.625	14.750	

Williams Production RMT Company

Planning Report - Geographic

Database:	EDMDB_COMPASS	Local Co-ordinate Reference:	Well Chevron TR 11-35-597 (A7) - Slot A7
Company:	PICEANCE HL	TVD Reference:	RKB @ 8493.0ft (Frontier 11 (28' RKB))
Project:	TR 27-05S-097W	MD Reference:	RKB @ 8493.0ft (Frontier 11 (28' RKB))
Site:	TR 44-27-597 Pad	North Reference:	True
Well:	Chevron TR 11-35-597	Survey Calculation Method:	Minimum Curvature
Wellbore:	Chevron TR 11-35-597		
Design:	Plan #2 21Jul09 sdb		

Formations						
Measured Depth (ft)	Vertical Depth (ft)	Name	Lithology	Dip (°)	Dip Direction (°)	
2,651.5	2,614.00	Wasatch		0.00		
4,460.7	4,392.00	G' Sand		0.00		
4,637.7	4,566.00	Ft. Union		0.00		
5,986.8	5,900.00	Mesaverde		0.00		
6,382.8	6,296.00	Top Gas		0.00		
8,595.8	8,509.00	Cameo Coals		0.00		
8,955.8	8,869.00	Rollins SS		0.00		
9,355.8	9,269.00	TD		0.00		

Plan Annotations					
Measured Depth (ft)	Vertical Depth (ft)	Local Coordinates			
		+N/-S (ft)	+E/-W (ft)	Comment	
120.0	120.0	0.0	0.0	Start Building at 2.00 deg at 120'.	
652.5	649.5	-18.6	45.7	Hold 10.65 deg at 653' MD	
5,276.8	5,194.1	-341.0	837.2	Start Dropping angle at 5277' MD at 1.5 deg.	
5,986.8	5,900.0	-365.8	898.1	Maintain vertical in target at 5987' MD	
9,355.8	9,269.0	-365.8	898.1	TD at 9356	