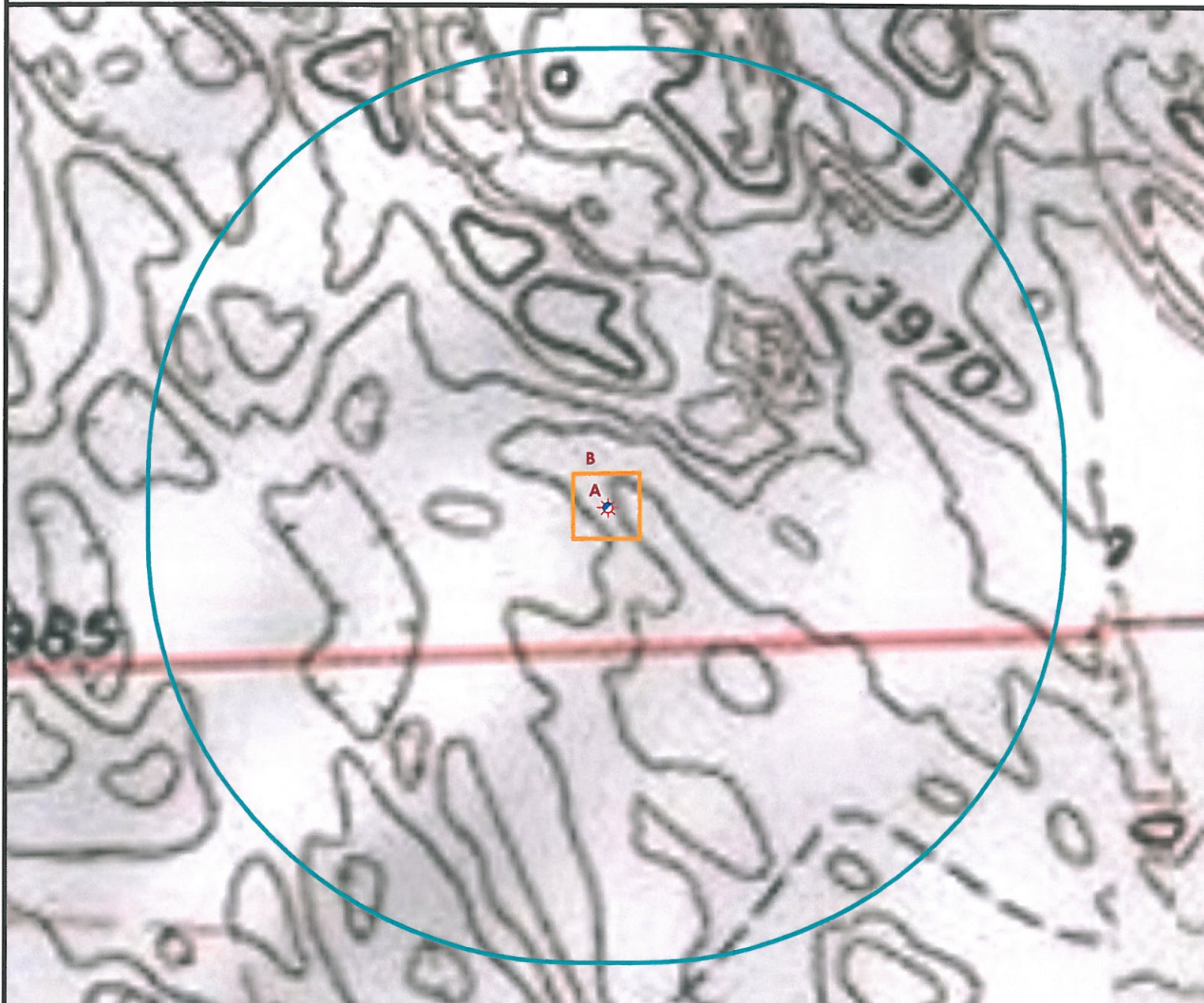


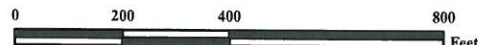
# Hydrology Map



A. Proposed Well ROUNDTREE 24-27 1N46W.

B. Operational Disturbance Area.

There are no Surface Waters Within a 1000' Radius of the Proposed Oil & Gas Location.



## Legend

- |  |                      |  |                       |
|--|----------------------|--|-----------------------|
|  | Proposed Well        |  | Building/Residence    |
|  | Existing Well        |  | Oil & Gas Equipment   |
|  | Water Well           |  | Water Body            |
|  | Pivot Pedestal       |  | Utility Box           |
|  | CattleGuard/Gate     |  | Railroad              |
|  | Bridge               |  | Fence                 |
|  | Disturbance Area     |  | Overhead Power Line   |
|  | 1000' Radius         |  | Pipeline              |
|  | Facilities Enclosure |  | County Road           |
|  |                      |  | Intermittent Stream   |
|  |                      |  | Concrete Walled Ditch |

## 1000ft Radius Map of Surface Water and Riparian Areas

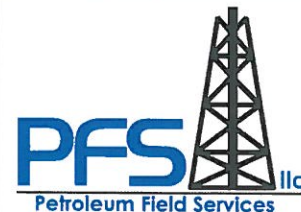
### OUNDTREE 24-27 1N46W

Surface Location: T1N R46W S27

Field Date: 5/6/2010  
 Drawing Date: 5/10/2010  
 Drafter: DMM  
 Checked By: BHF

Topographic data courtesy of USGS

Prepared for:  
**AUGUSTUS ENERGY PARTNERS, LLC**  
 P.O. Box 250  
 Wray, CO 80758



Use our resources to find yours!  
[www.petro-fs.com](http://www.petro-fs.com)

1801 W. 13th Ave Suite 207  
 Denver, CO 80204  
 (303) 928-7128  
 111 E. Third Street  
 Rifle, CO 81650  
 (970) 625-4740