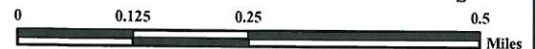
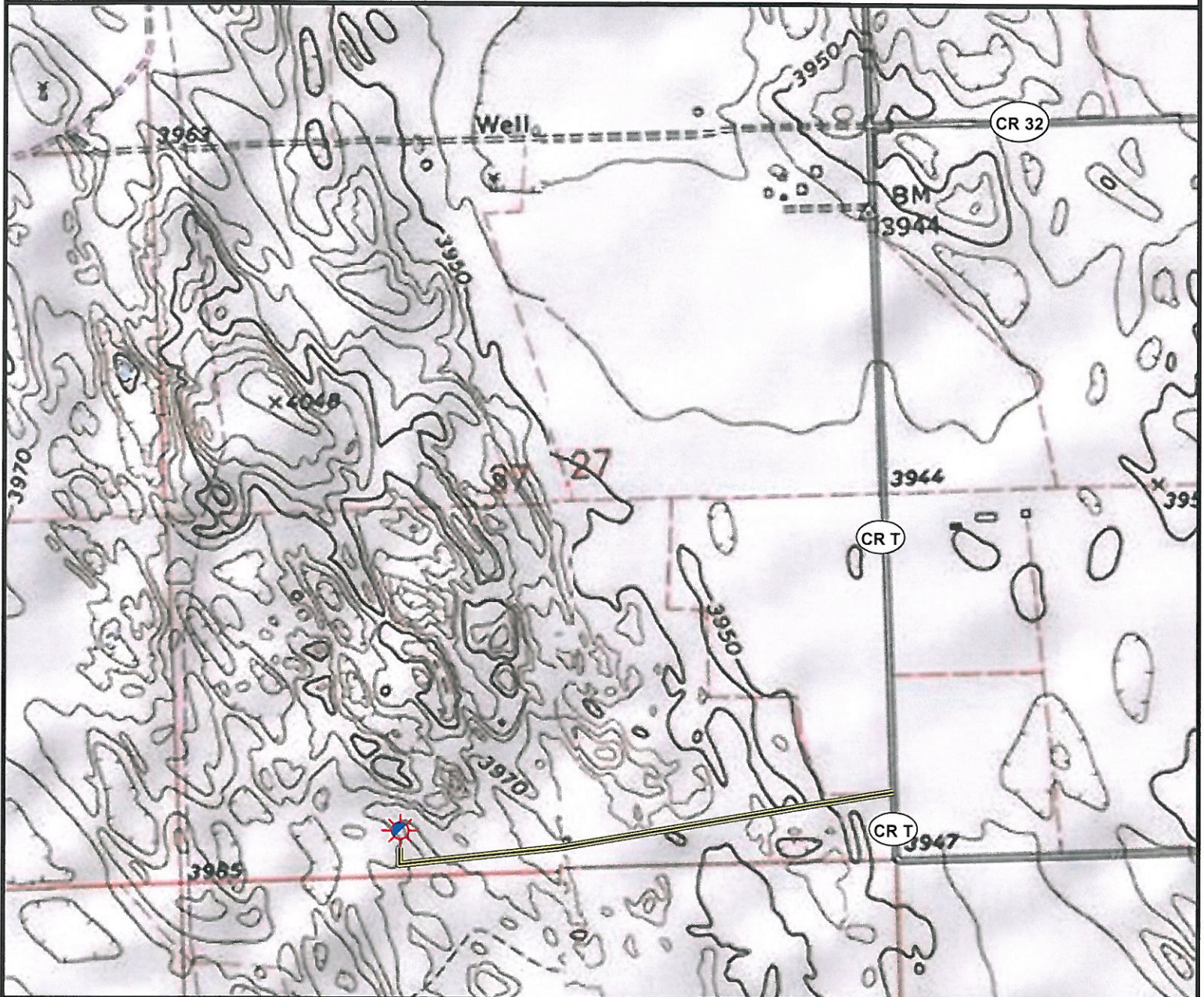


Access Road Map



Legend

- | | |
|----------------------|-----------------------|
| Proposed Well | Building/Residence |
| Existing Well | Oil & Gas Equipment |
| Water Well | Water Body |
| Pedestal | Utility Box |
| CattleGuard/Gate | Railroad |
| Bridge | Fence |
| Disturbance Area | Overhead Power Line |
| 1000' Radius | Pipeline |
| Facilities Enclosure | Access Road |
| | Intermittent Stream |
| | Concrete Walled Ditch |

Access Road Map

ROUNDTREE 24-27 1N46W

Surface Location: T1N R46W S27

Field Date: 5/06/2010
 Drawing Date: 5/12/2010
 Drafter: KLM
 Checked By: BHF

Topographic data courtesy of USGS

Prepared for:
AUGUSTUS ENERGY PARTNERS, LLC
 P.O. Box 250
 Wray, CO 80758



Use our resources to find yours!
www.petro-fs.com

1801 W. 13th Ave
 Denver, CO 80204
 (303) 928-7128

111 E. Third Street
 Suite 207
 Rifle, CO 81650
 (970) 625-4740