

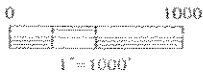
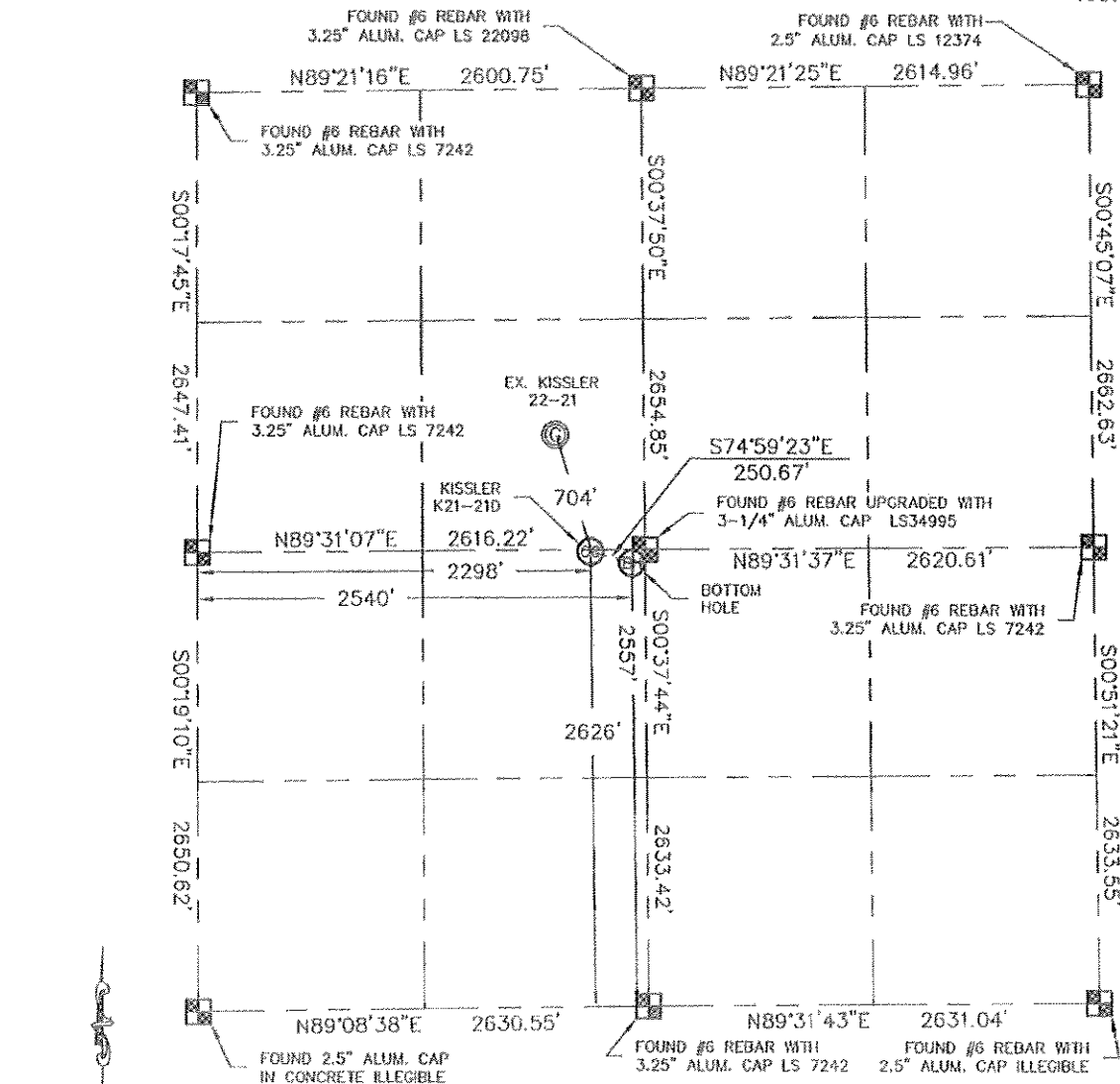


02529016

KING SURVEYORS, INC. 650 GARDEN DR. WINDSOR, CO 80550

## WELL LOCATION CERTIFICATE

THIS MAP DOES NOT REPRESENT A BOUNDARY SURVEY

SECTION: 21  
TOWNSHIP: 4N  
RANGE: 66W

In accordance with a request from Joe Martin with Noble Energy Inc. King Surveyors Inc. has determined the surface location of the Kissler K21-21D to be 2626' from the SOUTH line and 2298' from the WEST line and the bottom hole to be 2557' from the SOUTH line and 2540' from the WEST line as measured at right angles from the section line of Section 21, Township 4 North, Range 66 West of the Sixth Principal Meridian, County of Weld, State of Colorado.

I hereby state that this Well Location Certificate was prepared by me, or under my direct supervision, that the fieldwork was completed on 6/30/09, for and on behalf of Noble Energy Inc., that this is not a Land Survey Plot or an Improvement Survey Plot, and that it is not to be relied upon for establishment of fence, building, or other future improvement lines.

## NOTE:

- 1) Bearings shown are Grid Bearings of the Colorado State Plane Coordinate System, North Zone, North American Datum 1983/92.
- 2) Ground elevations are based on an observed GPS elevation (NAVD 1988 DATUM).
- 3) NEAREST EXISTING WELL: KISSLER 22-21 704' NORTH
- 4) IMPROVEMENTS: See VISIBLE IMPROVEMENTS exhibit for all visible improvements within 400' of well head.
- 5) SURFACE USE: CROP FIELD

SURFACE LOCATION  
LATITUDE: 40.29769°N  
LONGITUDE: 104.78365°W  
PDOP: 1.6  
ELEV: 4756  
1/4, 1/4: NE 1/4 SW 1/4  
NEAREST PROPERTY LINE: 10' NORTH

BOTTOM HOLE  
LATITUDE: 40.29691°N  
LONGITUDE: 104.78273°W

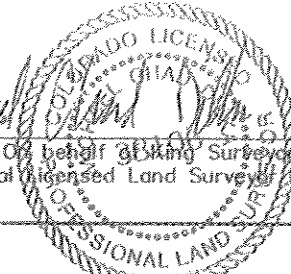
## NOTE:

According to Colorado law, you must commence any legal action based upon any defect in this W.L.C. within three years after you discover such defect. In no event, may any action based upon any defect in this survey be commenced more than ten years after the date of the certificate shown hereon. (13-80-105 C.R.S.)

## LEGEND

- = ALIQUOT MONUMENT AS DESCRIBED  
 = CALCULATED POSITION

Michael Chad Dilka—On behalf of King Surveyors, Inc.  
Colorado Professional Licensed Land Surveyor No. 38106  
PROJECT#: 2008041



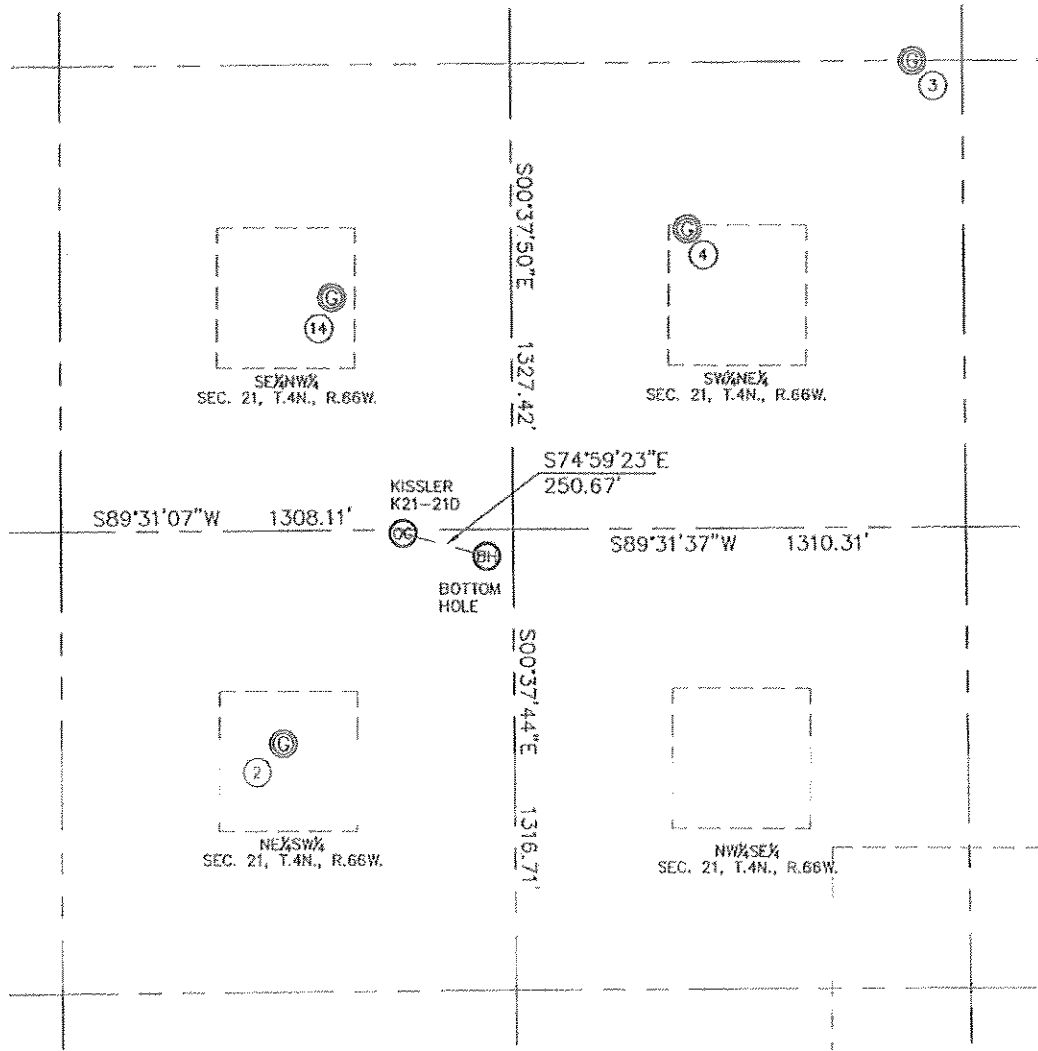
KING SURVEYORS, INC.

650 GARDEN DR.

WINDSOR, CO 80550

# SITE SKETCH

SECTION: 21  
TOWNSHIP: 4N  
RANGE: 66W



(2)  
KISSLER K 21-11  
1000' FRI  
7023' FRI  
LAT -40.29545N  
LONG -104.78490W  
PDOP: 2.1  
ELEV: 4757

(3)  
SCHAFER K 21-12  
1000' FRI  
7023' FRI  
LAT -40.29545N  
LONG -104.78490W  
PDOP: 1.2  
ELEV: 4751

(4)  
SCHAFER K 21-13  
1000' FRI  
7023' FRI  
LAT -40.29545N  
LONG -104.78490W  
PDOP: 2.0  
ELEV: 4751

(14)  
KISSLER K 21-14  
1000' FRI  
7023' FRI  
LAT -40.29545N  
LONG -104.78490W  
PDOP: 1.8  
ELEV: 4756

