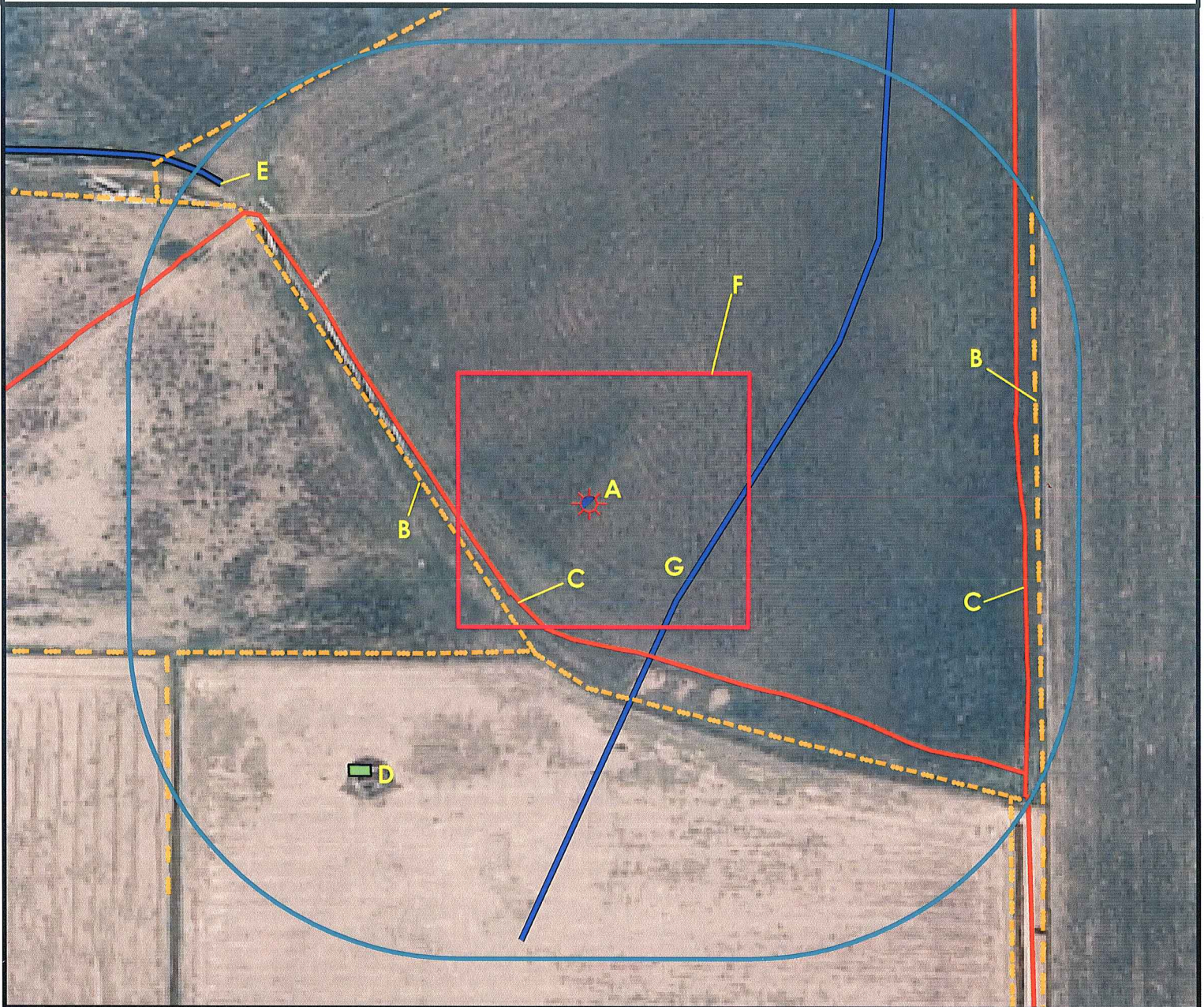


Location Drawing



- A. Proposed Well MURDOCK 34-14.
- B. Fences are 152' SW & 548'E.
- C. Access Roads are 139' SW & 529' E.
- D. Equine Facility is 415' SW.
- E. Terminus of Irrigation Ditch (dirt) is 585' NW.
- F. Operational Disturbance Area.
- G. Intermittent Stream is 155' SE.



Legend

- | | | | |
|--|----------------------|--|----------------------|
| | Proposed Well | | Building/Residence |
| | Existing Well | | Oil & Gas Equipment |
| | Plugged Well | | Water Body |
| | Water Well | | Utility Box |
| | CattleGuard/Gate | | Railroad |
| | Bridge | | Fence |
| | Disturbance Area | | Overhead Power Line |
| | 400' Radius | | Underground Pipeline |
| | Facilities Enclosure | | Access Road |
| | | | Ditch/Stream |
| | | | Concrete Ditch |

400ft Radius Map

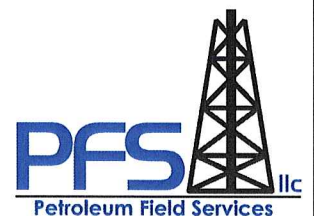
MURDOCK 34-14

Surface Location: T5N R68W S34
Description of surface use: Open Field

Field Date: 3/2/2010
Drawing Date: 3/10/2010
Drafter: CGR
Checked By: BHF

Aerial Photo supplied by NAIP (2009)

Prepared for:
S & P ENERGY, LLC



Use our resources to find yours!
www.petro-fs.com

1801 W. 13th Ave 111 E. Third Street
Denver, CO 80204 Suite 207
(303) 928-7128 Rifle, CO 81650
(970) 625-4740