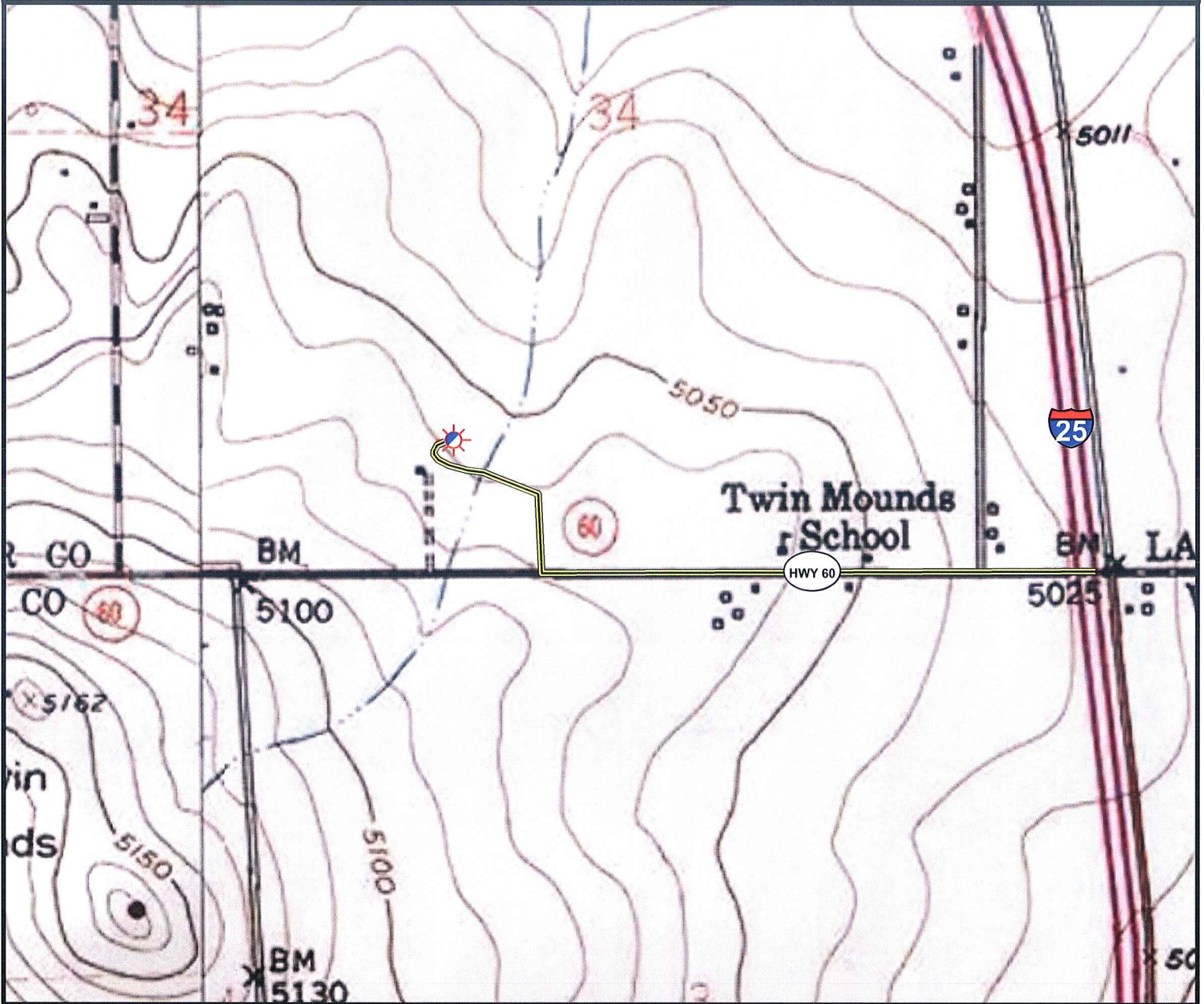


# Access Road Map



0 500 1,000 2,000 Feet

## Legend

- |  |                      |  |                      |
|--|----------------------|--|----------------------|
|  | Proposed Well        |  | Building/Residence   |
|  | Existing Well        |  | Oil & Gas Equipment  |
|  | Plugged Well         |  | Water Body           |
|  | Water Well           |  | Utility Box          |
|  | CattleGuard/Gate     |  | Railroad             |
|  | Bridge               |  | Fence                |
|  | Disturbance Area     |  | Overhead Power Line  |
|  | 400' Radius          |  | Underground Pipeline |
|  | Facilities Enclosure |  | Access Road          |
|  |                      |  | Ditch/Canal          |
|  |                      |  | Concrete Ditch       |

## Access Road Map

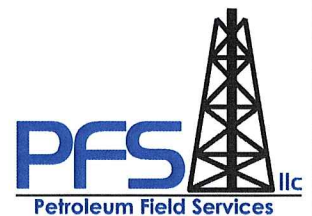
# MURDOCK 34-14

Surface Location: T5N R68W S34

Field Date: 3/2/2010  
 Drawing Date: 3/10/2010  
 Drafter: CGR  
 Checked By: BHF

Topographic data courtesy of USGS

Prepared for:  
 S & P ENERGY, LLC



Use our resources to find yours!  
[www.petro-fs.com](http://www.petro-fs.com)

1801 W. 13th Ave Suite 207  
 Denver, CO 80204  
 (303) 928-7128  
 111 E. Third Street  
 Rifle, CO 81650  
 (970) 625-4740