



PROPOSED PIPELINE MAP

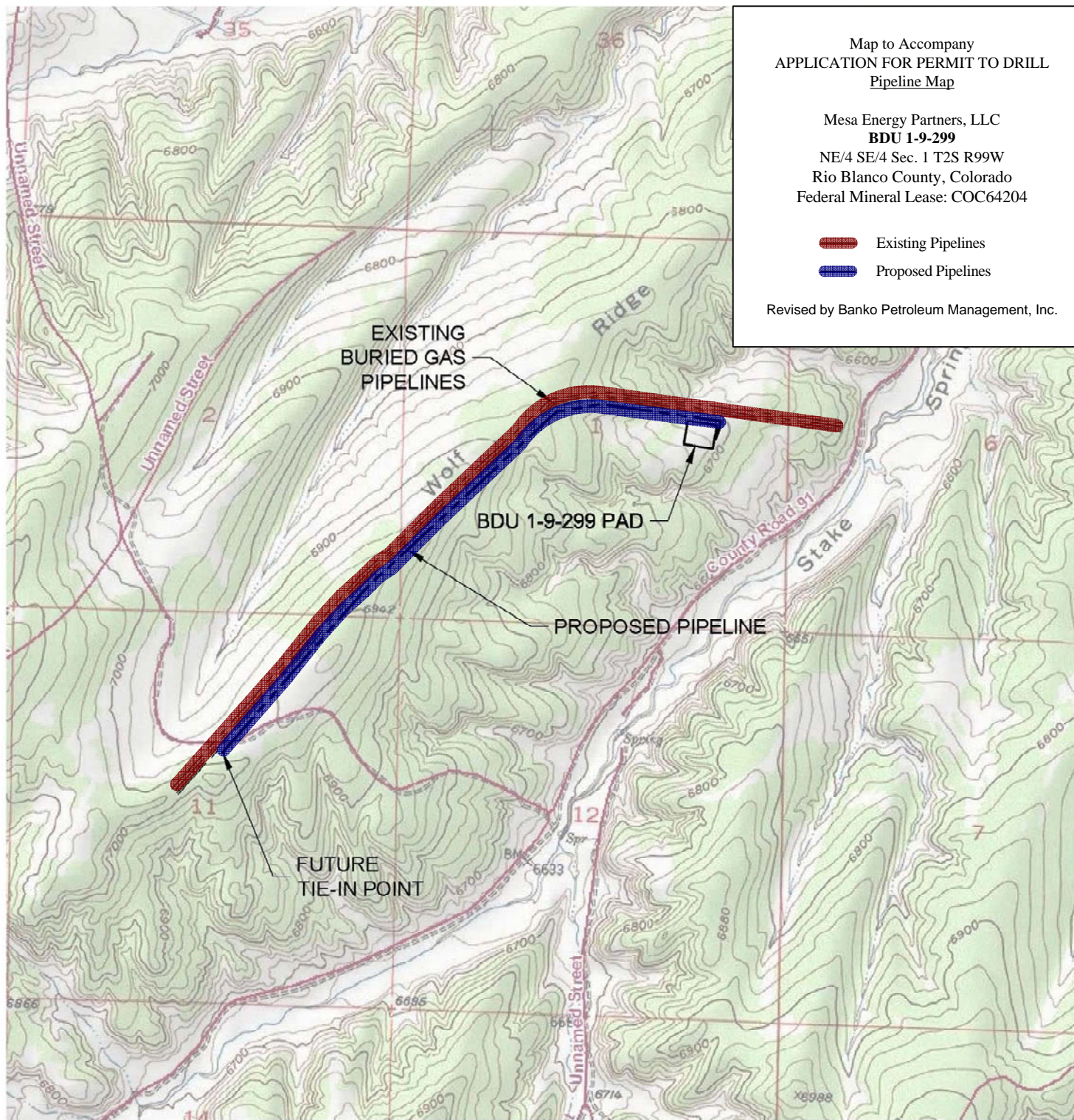
BDU 1-9-299 PAD

Map to Accompany
APPLICATION FOR PERMIT TO DRILL
Pipeline Map

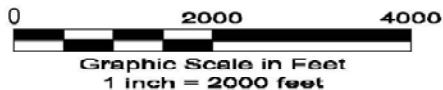
Mesa Energy Partners, LLC
BDU 1-9-299
NE/4 SE/4 Sec. 1 T2S R99W
Rio Blanco County, Colorado
Federal Mineral Lease: COC64204

-  Existing Pipelines
-  Proposed Pipelines

Revised by Banko Petroleum Management, Inc.



North



LAND SURVEYING AND MAPPING
LAFAYETTE - WINTER PARK
Ph 303 666 0379 Fx 303 665 6320

MESA ENERGY PARTNERS, LLC
BDU 1-9-299

NE1/4 SE1/4 SEC. 1 T2S R99W
6th PM RIO BLANCO COUNTY COLORADO

5/17/10