


Map to Accompany
APPLICATION FOR PERMIT TO DRILL
Pipeline Map

Mesa Energy Partners, LLC
BDU 1-2-199

SHL: NE/4 NW/4 Sec. 1 T1S R99W Lot 7
BHL: NW/4 NE/4 Sec. 1 T1S R99W Lot 6
Rio Blanco County, Colorado
Federal Mineral Lease: COC62815

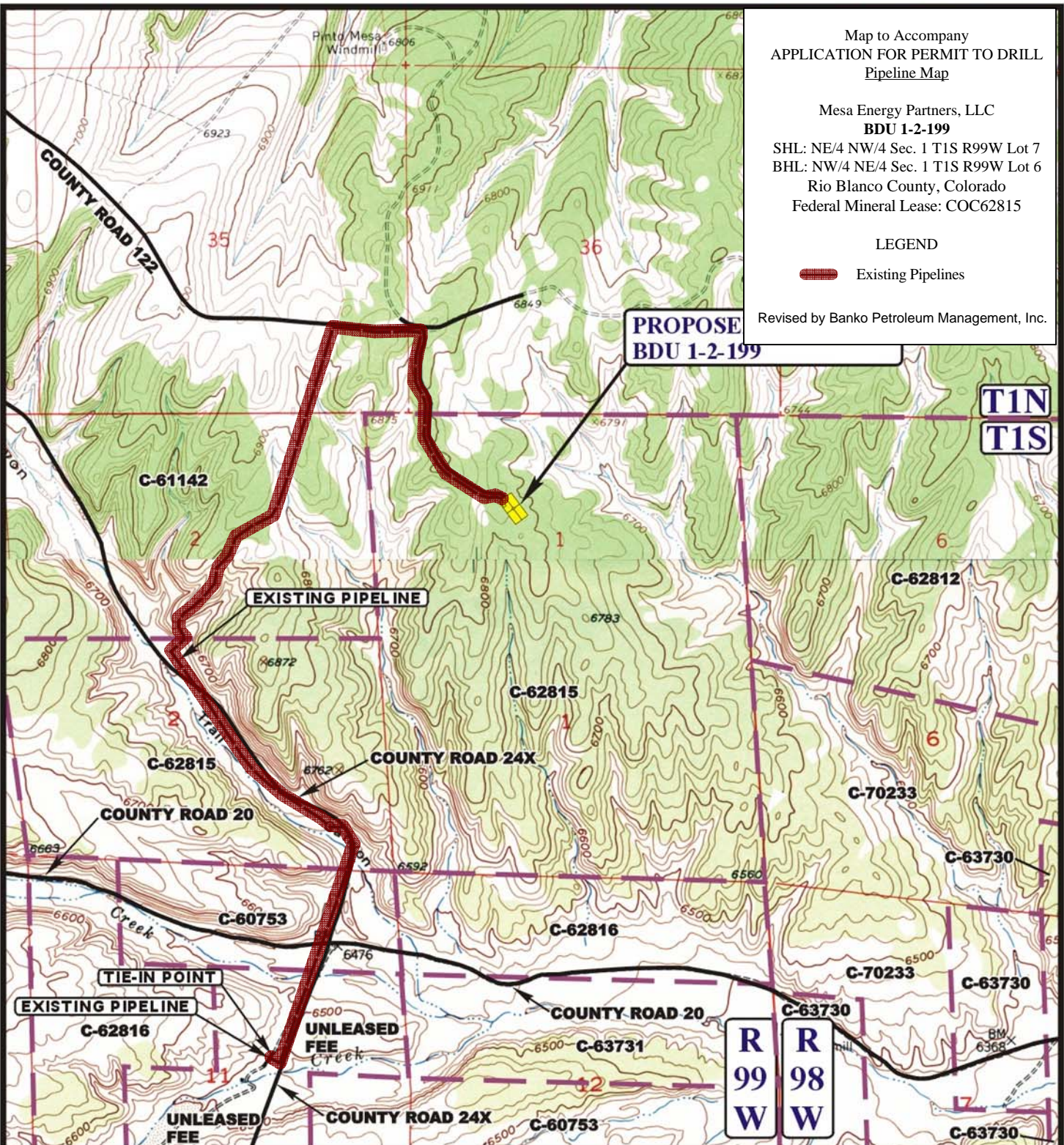
LEGEND

 Existing Pipelines

Revised by Banko Petroleum Management, Inc.



**PROPOSED
BDU 1-2-199**

**T1N
T1S**



APPROXIMATE TOTAL PIPELINE DISTANCE = 17,242' +/-

LEGEND:

 EXISTING PIPELINE
 EXISTING ROAD

MESA ENERGY PARTNERS, LLC

BDU 1-2-199
SECTION 1, T1S, R99W, 6th P.M.
LOT 7

SHEET 13 OF 17



Uintah Engineering & Land Surveying
85 South 200 East Vernal, Utah 84078
(435) 789-1017 * FAX (435) 789-1813



**TOPOGRAPHIC
MAP**

05 05 09
MONTH DAY YEAR

SCALE: 1" = 2000' DRAWN BY: J.L.G. REVISED: 05-13-10

**D
TOPO**