

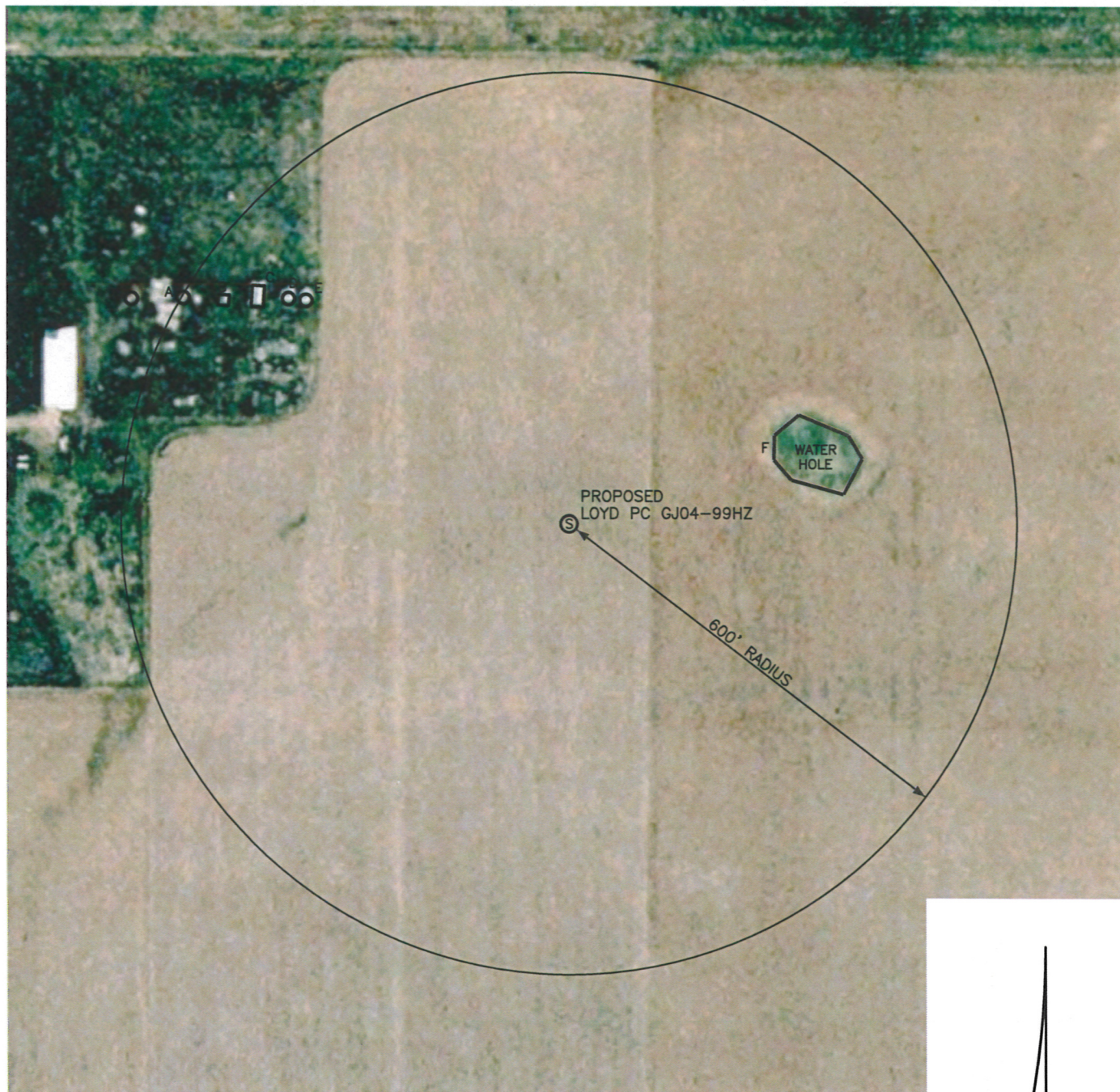
# LOCATION DRAWING

LEIBERT-McATEE & ASSOCIATES, INC. 615 S 10th AVE STERLING, CO 80751 970-522-1960

## VISIBLE IMPROVEMENTS

THIS MAP DOES NOT REPRESENT A BOUNDARY SURVEY

SECTION 4  
TOWNSHIP 11 NORTH  
RANGE 62 WEST



### IMPROVEMENTS:

- A GRAIN BIN N59°47'25"W 598'
- B SHED N57°33'40"W 540'
- C SHED N54°54'00"W 501'
- D GRAIN BIN N51°27'35"W 481'
- E GRAIN BIN N49°52'40"W 461'
- F WATER HOLE N72°45'45"E 288'

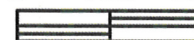
NOTICE: According to Colorado law you MUST commence any legal action based upon any defect in the W.L.C. within three years after you first discover such defect. In no event may only action based upon any defect in this W.L.C. be commenced more than ten years from this sold date of the certification shown hereon.

THE NEAREST OVERHEAD POWER LINE IS 1211' WEST.



SCALE: 1"=200'

0 100 200



SCALE IN FEET