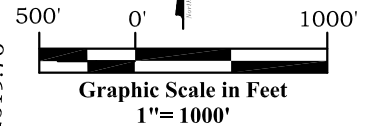
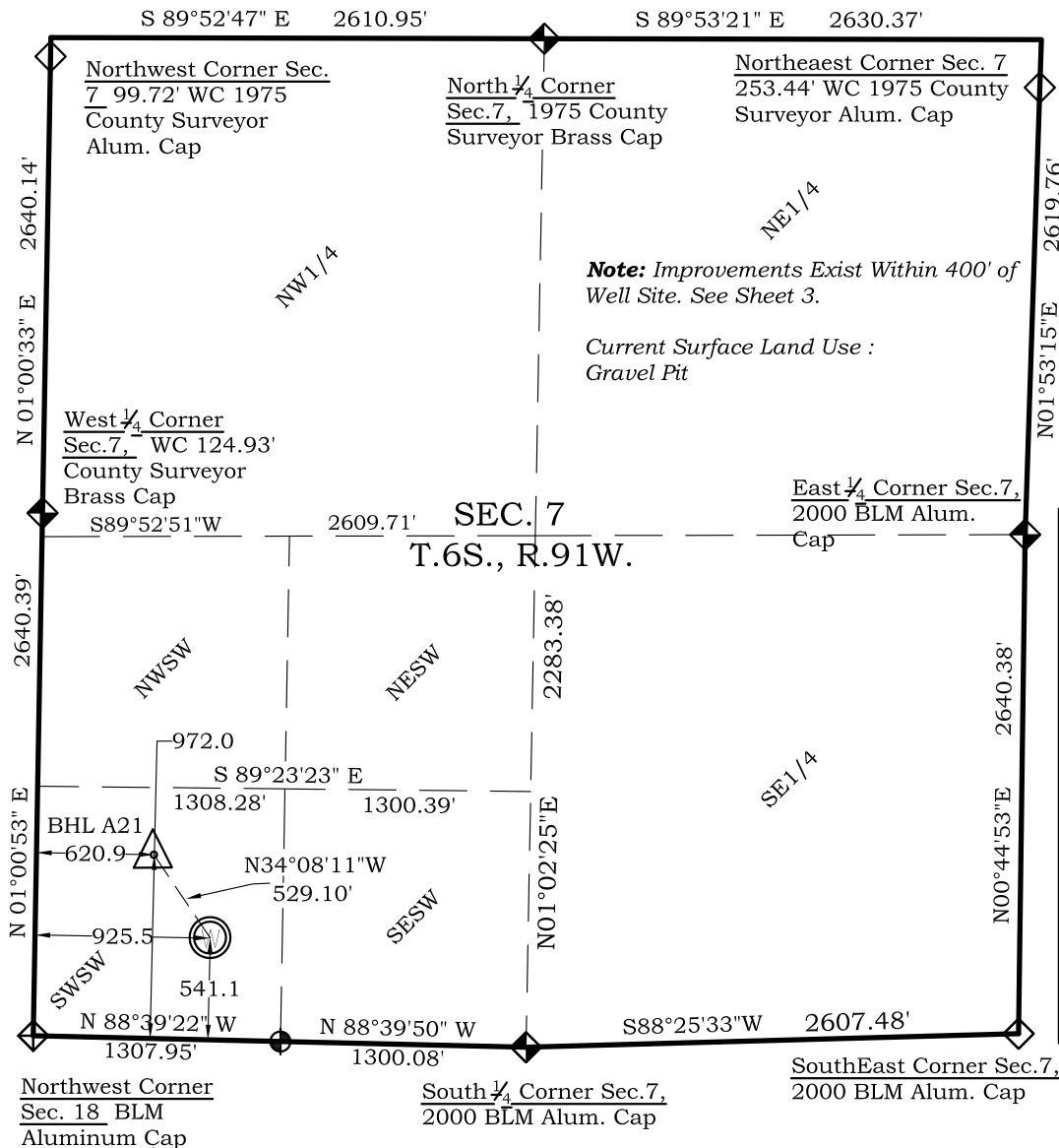






Section 7, Township 6 South, Range 91 West



Legend

-  - Field Surveyed Section Corner
 - Field Surveyed Quarter Corner
 - Calculated Section Corner Location
 - Field Surveyed $\frac{1}{6}$ Corner

Surface: Frei A21

541' FSL
926' FWL
 Gnd El= 5607.1
Pad El= 5596.0
NAD83
 Lat: 39.535980488°N
 Long: 107.603240407°W
NAD27
 Lat: 39.535999871°N
 Long: 107.602627401°W
UTM 13 NORTH
NAD 1983
 NORTHING
 14368390.498
 EASTING
 906417.639

Bottom Hole: Frei A21

972' FSL
621' FWL
NAD83
Lat: 39.537158416°N
Long: 107.604337361°W
NAD27
Lat: 39.537177801°N
Long: 107.603724300°W

SURVEYOR'S CERTIFICATE

I, SCOTT E. AIBNER, A REGISTERED LAND SURVEYOR, LICENSED UNDER THE LAWS OF THE STATE OF COLORADO DO HEREBY CERTIFY THAT THE SURVEY SHOWN HEREON WAS PREPARED BY RIVER VALLEY SURVEY, INC., FOR ANTERO RESOURCES, BY ME OR UNDER MY DIRECT SUPERVISION AND THAT THIS PLAT IS A TRUE REPRESENTATION THEREOF.

BY: _____
SCOTT E. AIBNER, COLORADO REG. NO. 31143

Notes:

1. LATITUDE AND LONGITUDE COORDINATES ARE DIFFERENTIALLY CORRECTED AND BASED ON PUBLISHED NGS CONTROL STATION "WDP-5". SYSTEM: UTM ZONE: 13 NORTH DATUM: NAD 1983 (CONUS)
2. ELEVATIONS ARE BASED ON NAVD OF 1983.
3. ALL BOTTOM AND TOP HOLE LOCATIONS ARE MEASURED 90 DEGREES FROM SECTION LINE.
4. USGS QUADRANGLE MAP "SILT".
5. CURRENT SURFACE LAND USE: GRAVEL PIT.
6. PDOP AT THE TIME OF LOCATION OF SURFACE WELL = 2.4



River Valley Survey, Inc.
110 East 3rd. Street, Suite 213
Rifle, Colorado 81650
Ph: 970-379-7846

Project: FREI A PAD

Field Date: 05-10-10

Date: 05-18-2010

Scale: 1"= 1000'

Sheet: 1 of 8

Well Location Plat
Prepared For Antero Resources

Situate In:
SW¼ Section 7, T6S., R. 91 W. of the
6th P.M., Garfield County, Colorado

