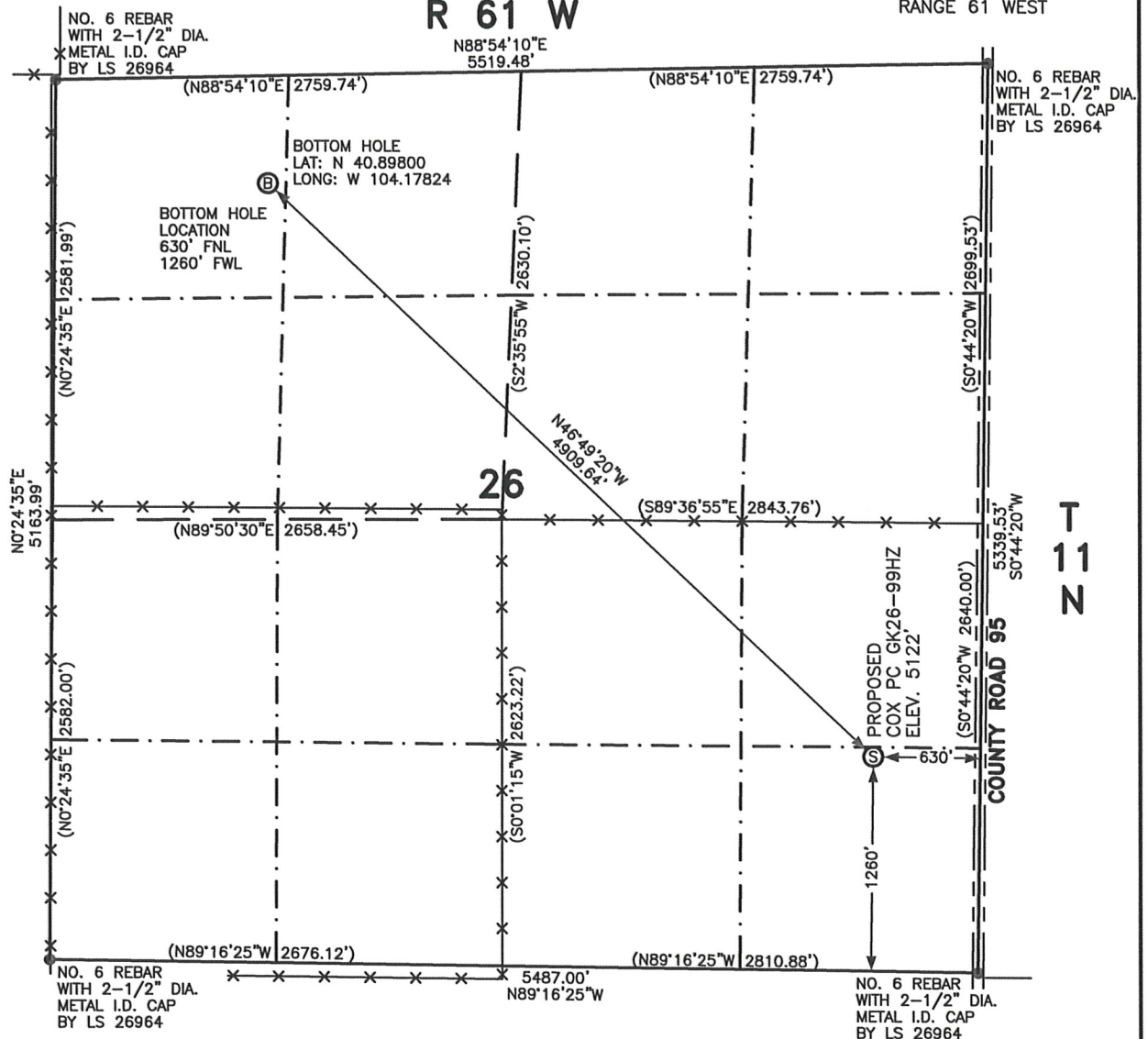


WELL LOCATION CERTIFICATE

THIS MAP DOES NOT REPRESENT A BOUNDARY SURVEY

SECTION 26
TOWNSHIP 11 NORTH
RANGE 61 WEST



SCALE: 1"=1000'

0 500 1000



SCALE IN FEET

IN ACCORDANCE WITH A REQUEST FROM RYAN ANTONIO - NOBLE ENERGY INC. LEIBERT-McATEE & ASSOCIATES, INC HAS DETERMINED THE LOCATION OF THE COX PC GK26-99HZ WELL TO BE 1260' FSL AND 630' FEL, AS MEASURED AT NINETY (90) DEGREES FROM THE SECTION LINES OF SECTION 26, TOWNSHIP 11 NORTH, RANGE 61 WEST, 6TH PRINCIPAL MERIDIAN, WELD COUNTY, COLORADO.

THE BOTTOM HOLE LOCATION PROVIDED BY THE CLIENT IS TO BE 630' FNL AND 1260' FWL.

I HEREBY CERTIFY THAT THIS WELL LOCATION CERTIFICATE WAS PREPARED BY ME, OR UNDER MY DIRECT SUPERVISION. THAT THE FIELD WORK WAS COMPLETED ON 3/23/2010, FOR AND ON BEHALF OF NOBLE ENERGY INC, THAT IT IS NOT A LAND SURVEY PLAT OR AN IMPROVEMENT SURVEY PLAT, AND THAT IT IS NOT TO BE RELIED UPON FOR ESTABLISHMENT OF FENCE, BUILDING, OR OTHER FUTURE IMPROVEMENT LINES.

NOTES:

- 1) BASIS OF BEARINGS FOR THIS MAP ARE BASED UPON GPS OBSERVATIONS MADE ON 3/23/2010 BETWEEN MONUMENT LOCATED AT THE NORTHWEST SECTION CORNER AND THE NORTHEAST SECTION CORNER OF SAID SECTION AND WITH ALL BEARINGS SHOWN HEREON RELATIVE THERETO.
- 2) ELEVATIONS ARE BASED UPON NGS OPUS SOLUTION NAVD 88 DATUM.
- 3) SEE VISIBLE IMPROVEMENTS EXHIBIT FOR ALL IMPROVEMENTS WITHIN 600'.
- 4) THE LOCATION FALLS IN PASTURE.

LATITUDE & LONGITUDE (NAD 83 SURFACE HOLE)

LATITUDE: N 40.88878

LONGITUDE: W 104.16530

PDOP: 1.7

QUARTER-QUARTER: SE1/4SE1/4

NEAREST PROPERTY LINE: 630' EAST

LEGEND

- ⊙ PROPOSED SURFACE LOCATION
- ⊙ PROPOSED BOTTOM LOCATION

== == == == ROAD

-x-x-x-x-x- FENCE

CALCULATED DIMENSIONS
ARE IN PARENTHESES

GPS OPERATOR: TIM LEIBERT
DWG NO. 305-10

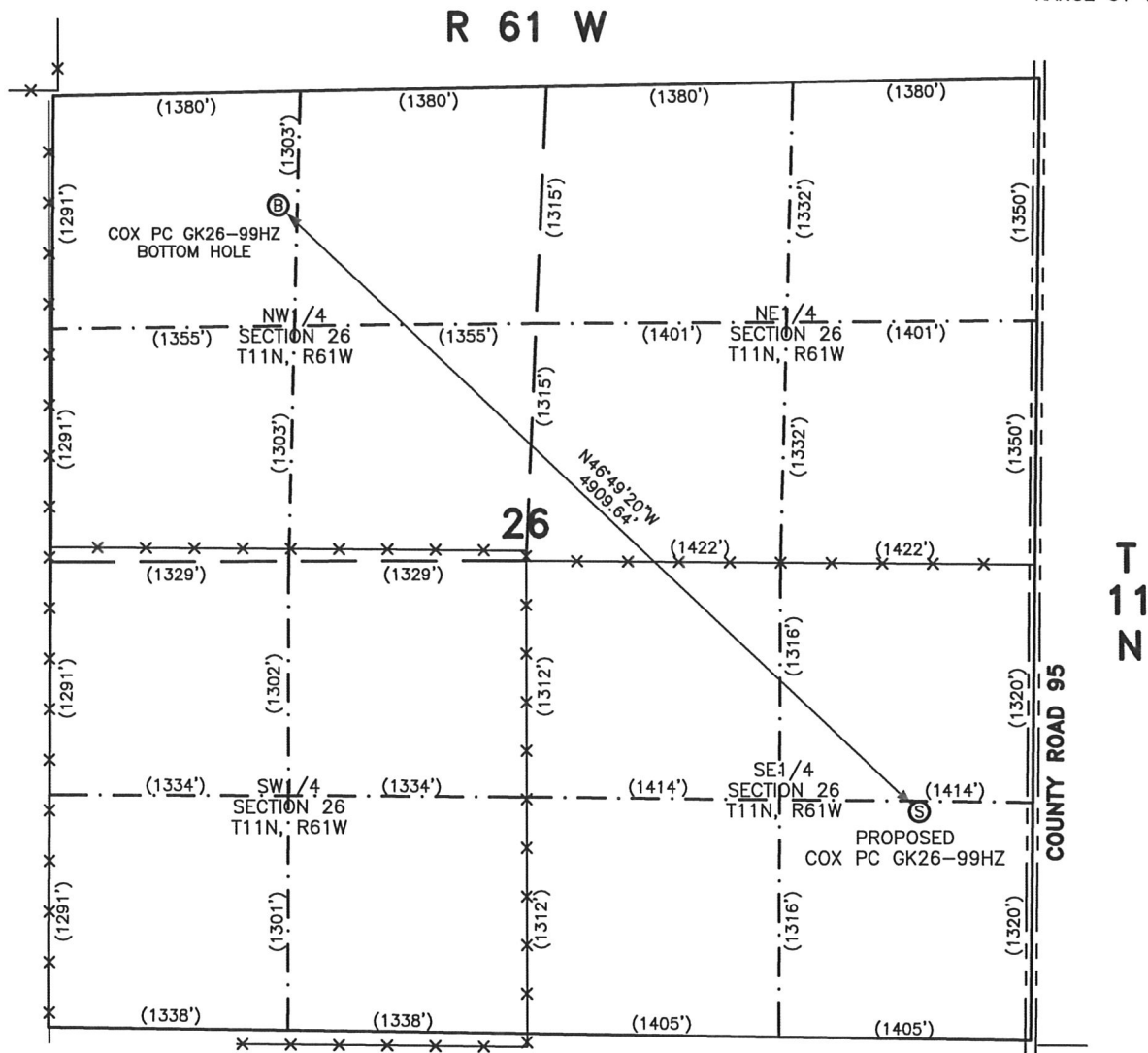
NOTICE: According to Colorado law you MUST commence any legal action based upon any defect in the W.L.C. within three years after you first discover such defect. In no event may only action based upon any defect in this W.L.C. be commenced more than ten years from this sold date of the certification shown hereon.



COMPLETED 3-29-10
NICOLE F. HAY
FOR AND ON BEHALF OF
LEIBERT-McATEE & ASSOCIATES, INC
P.L.S. 38044

SITE SKETCH – COX PC GK26–99HZ

SECTION 26
TOWNSHIP 11 NORTH
RANGE 61 WEST



NOTES:

1) THIS SKETCH DOES NOT REPRESENT A BOUNDARY SURVEY.

LEGEND

- Ⓢ PROPOSED SURFACE LOCATION
- Ⓟ PROPOSED BOTTOM LOCATION

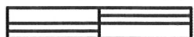
== == == ROAD
-x-x- FENCE

CALCULATED DIMENSIONS
ARE IN PARENTHESES



SCALE: 1"=1000'

0 500 1000



SCALE IN FEET