

GREAT PLAINS
SURVEYING, INC.

20575 Co. Rd. 21 Phone 970-774-3602
Haxtun, CO 80731 Fax 970-774-3601

CROSS SECTIONS A & B, HORZ. SCALE 1" = 50'
VERT. SCALE 1" = 10'

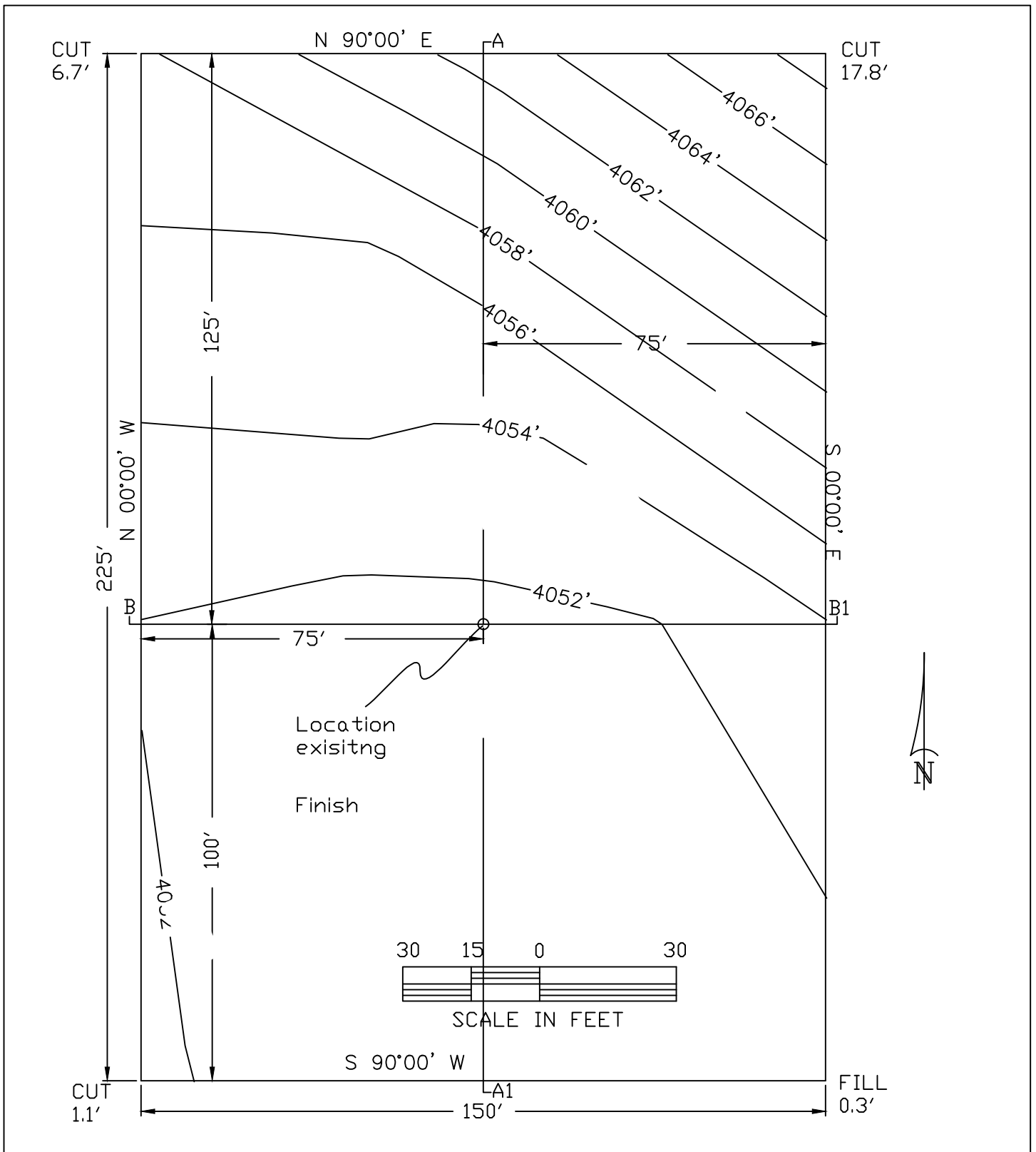
JOHNSON PRESCOTT 21-15 2S46W


AUGUSTUS ENERGY PARTNERS, LLC

YUMA COUNTY, COLORADO 27 FEBRUARY, 2010

WC21-15 2S46WGPS

10401-109



 <p>GREAT PLAINS SURVEYING, INC.</p>	JOHNSON PRESCOTT 21-15 2S46W
	PAD LAYOUT
	AUGUSTUS ENERGY PARTNERS, LLC.
	YUMA COUNTY, COLORADO 27 FEBRUARY 2010

20575 Co. Rd. 21 Phone 970-774-3602
Haxtun, CO 80731 Fax 970-774-3601