

# Noble Energy

Weld County, CO

Sec. 6-T11N-R61W

Burnett PC GK06-99HZ

Plan #1

Plan: Plan #1 Proposal

## Sperry Drilling Services Proposal Report

06 May, 2010

Well Coordinates: 1,593,897.14 N, 3,344,213.79 E (40° 57' 25.09" N, 104° 15' 13.72" W)  
Ground Level: 5,262.00 ft

Local Coordinate Origin:

Viewing Datum:

TVDs to System:

North Reference:

Unit System:

Geodetic Scale Factor Applied

Version: 2003.16 Build: 43I

Centered on Well Burnett PC GK06-99HZ

RKB 24' @ 5286.00ft (Original Well Elev)

N

True

API - US Survey Feet - Custom

**HALLIBURTON**

## Plan Report for Burnett PC GK06-99HZ - Plan #1 Proposal

Measured Depth (ft)	Inclination (°)	Azimuth (°)	Vertical Depth (ft)	+N/-S (ft)	+E/-W (ft)	Vertical Section (ft)	Dogleg Rate (°/100ft)	Build Rate (°/100ft)	Turn Rate (°/100ft)	Toolface Azimuth (°)
0.00	0.00	0.00	0.00	0.00	0.00	0.00	0.00	0.00	0.00	0.00
100.00	0.00	0.00	100.00	0.00	0.00	0.00	0.00	0.00	0.00	0.00
200.00	0.00	0.00	200.00	0.00	0.00	0.00	0.00	0.00	0.00	0.00
300.00	0.00	0.00	300.00	0.00	0.00	0.00	0.00	0.00	0.00	0.00
400.00	0.00	0.00	400.00	0.00	0.00	0.00	0.00	0.00	0.00	0.00
500.00	0.00	0.00	500.00	0.00	0.00	0.00	0.00	0.00	0.00	0.00
600.00	0.00	0.00	600.00	0.00	0.00	0.00	0.00	0.00	0.00	0.00
700.00	0.00	0.00	700.00	0.00	0.00	0.00	0.00	0.00	0.00	0.00
800.00	0.00	0.00	800.00	0.00	0.00	0.00	0.00	0.00	0.00	0.00
900.00	0.00	0.00	900.00	0.00	0.00	0.00	0.00	0.00	0.00	0.00
1,000.00	0.00	0.00	1,000.00	0.00	0.00	0.00	0.00	0.00	0.00	0.00
1,100.00	0.00	0.00	1,100.00	0.00	0.00	0.00	0.00	0.00	0.00	0.00
1,200.00	0.00	0.00	1,200.00	0.00	0.00	0.00	0.00	0.00	0.00	0.00
1,300.00	0.00	0.00	1,300.00	0.00	0.00	0.00	0.00	0.00	0.00	0.00
1,400.00	0.00	0.00	1,400.00	0.00	0.00	0.00	0.00	0.00	0.00	0.00
1,500.00	0.00	0.00	1,500.00	0.00	0.00	0.00	0.00	0.00	0.00	0.00
1,600.00	0.00	0.00	1,600.00	0.00	0.00	0.00	0.00	0.00	0.00	0.00
1,700.00	0.00	0.00	1,700.00	0.00	0.00	0.00	0.00	0.00	0.00	0.00
1,800.00	0.00	0.00	1,800.00	0.00	0.00	0.00	0.00	0.00	0.00	0.00
1,900.00	0.00	0.00	1,900.00	0.00	0.00	0.00	0.00	0.00	0.00	0.00
2,000.00	0.00	0.00	2,000.00	0.00	0.00	0.00	0.00	0.00	0.00	0.00
2,100.00	0.00	0.00	2,100.00	0.00	0.00	0.00	0.00	0.00	0.00	0.00
2,200.00	0.00	0.00	2,200.00	0.00	0.00	0.00	0.00	0.00	0.00	0.00
2,300.00	0.00	0.00	2,300.00	0.00	0.00	0.00	0.00	0.00	0.00	0.00
2,400.00	0.00	0.00	2,400.00	0.00	0.00	0.00	0.00	0.00	0.00	0.00
2,500.00	0.00	0.00	2,500.00	0.00	0.00	0.00	0.00	0.00	0.00	0.00
2,600.00	0.00	0.00	2,600.00	0.00	0.00	0.00	0.00	0.00	0.00	0.00
2,700.00	0.00	0.00	2,700.00	0.00	0.00	0.00	0.00	0.00	0.00	0.00
2,800.00	0.00	0.00	2,800.00	0.00	0.00	0.00	0.00	0.00	0.00	0.00
2,900.00	0.00	0.00	2,900.00	0.00	0.00	0.00	0.00	0.00	0.00	0.00
3,000.00	0.00	0.00	3,000.00	0.00	0.00	0.00	0.00	0.00	0.00	0.00
3,100.00	0.00	0.00	3,100.00	0.00	0.00	0.00	0.00	0.00	0.00	0.00
3,200.00	0.00	0.00	3,200.00	0.00	0.00	0.00	0.00	0.00	0.00	0.00
3,300.00	0.00	0.00	3,300.00	0.00	0.00	0.00	0.00	0.00	0.00	0.00
3,400.00	0.00	0.00	3,400.00	0.00	0.00	0.00	0.00	0.00	0.00	0.00
3,500.00	0.00	0.00	3,500.00	0.00	0.00	0.00	0.00	0.00	0.00	0.00
3,600.00	0.00	0.00	3,600.00	0.00	0.00	0.00	0.00	0.00	0.00	0.00
3,700.00	0.00	0.00	3,700.00	0.00	0.00	0.00	0.00	0.00	0.00	0.00
3,800.00	0.00	0.00	3,800.00	0.00	0.00	0.00	0.00	0.00	0.00	0.00
3,900.00	0.00	0.00	3,900.00	0.00	0.00	0.00	0.00	0.00	0.00	0.00
4,000.00	0.00	0.00	4,000.00	0.00	0.00	0.00	0.00	0.00	0.00	0.00
4,100.00	0.00	0.00	4,100.00	0.00	0.00	0.00	0.00	0.00	0.00	0.00
4,200.00	0.00	0.00	4,200.00	0.00	0.00	0.00	0.00	0.00	0.00	0.00
4,300.00	0.00	0.00	4,300.00	0.00	0.00	0.00	0.00	0.00	0.00	0.00
4,400.00	0.00	0.00	4,400.00	0.00	0.00	0.00	0.00	0.00	0.00	0.00
4,500.00	0.00	0.00	4,500.00	0.00	0.00	0.00	0.00	0.00	0.00	0.00
4,600.00	0.00	0.00	4,600.00	0.00	0.00	0.00	0.00	0.00	0.00	0.00
4,700.00	0.00	0.00	4,700.00	0.00	0.00	0.00	0.00	0.00	0.00	0.00
4,800.00	0.00	0.00	4,800.00	0.00	0.00	0.00	0.00	0.00	0.00	0.00
4,900.00	0.00	0.00	4,900.00	0.00	0.00	0.00	0.00	0.00	0.00	0.00
5,000.00	0.00	0.00	5,000.00	0.00	0.00	0.00	0.00	0.00	0.00	0.00
5,100.00	0.00	0.00	5,100.00	0.00	0.00	0.00	0.00	0.00	0.00	0.00
5,200.00	0.00	0.00	5,200.00	0.00	0.00	0.00	0.00	0.00	0.00	0.00
5,300.00	0.00	0.00	5,300.00	0.00	0.00	0.00	0.00	0.00	0.00	0.00
5,400.00	0.00	0.00	5,400.00	0.00	0.00	0.00	0.00	0.00	0.00	0.00
5,500.00	0.00	0.00	5,500.00	0.00	0.00	0.00	0.00	0.00	0.00	0.00
5,600.00	0.00	0.00	5,600.00	0.00	0.00	0.00	0.00	0.00	0.00	0.00
5,700.00	0.00	0.00	5,700.00	0.00	0.00	0.00	0.00	0.00	0.00	0.00
5,800.00	0.00	0.00	5,800.00	0.00	0.00	0.00	0.00	0.00	0.00	0.00

## Plan Report for Burnett PC GK06-99HZ - Plan #1 Proposal

Measured Depth (ft)	Inclination (°)	Azimuth (°)	Vertical Depth (ft)	+N/-S (ft)	+E/-W (ft)	Vertical Section (ft)	Dogleg Rate (°/100ft)	Build Rate (°/100ft)	Turn Rate (°/100ft)	Toolface Azimuth (°)
5,900.00	0.00	0.00	5,900.00	0.00	0.00	0.00	0.00	0.00	0.00	0.00
6,000.00	0.00	0.00	6,000.00	0.00	0.00	0.00	0.00	0.00	0.00	0.00
6,100.00	0.00	0.00	6,100.00	0.00	0.00	0.00	0.00	0.00	0.00	0.00
6,200.00	0.00	0.00	6,200.00	0.00	0.00	0.00	0.00	0.00	0.00	0.00
6,300.00	0.00	0.00	6,300.00	0.00	0.00	0.00	0.00	0.00	0.00	0.00
6,338.79	0.00	0.00	6,338.79	0.00	0.00	0.00	0.00	0.00	0.00	0.00
Kickoff at 6338.79ft										
6,400.00	4.90	136.36	6,399.93	-1.89	1.80	2.61	8.00	8.00	0.00	136.36
6,500.00	12.90	136.36	6,498.64	-13.07	12.47	18.07	8.00	8.00	0.00	0.00
6,600.00	20.90	136.36	6,594.25	-34.09	32.51	47.11	8.00	8.00	0.00	0.00
6,700.00	28.90	136.36	6,684.88	-64.53	61.54	89.17	8.00	8.00	0.00	0.00
6,800.00	36.90	136.36	6,768.78	-103.81	98.99	143.44	8.00	8.00	0.00	0.00
6,900.00	44.90	136.36	6,844.30	-151.15	144.14	208.86	8.00	8.00	0.00	0.00
Build Rate = 8.00°/100ft										
7,000.00	52.90	136.36	6,909.99	-205.64	196.10	284.15	8.00	8.00	0.00	0.00
7,055.94	57.37	136.36	6,941.96	-238.84	227.77	330.04	8.00	8.00	0.00	0.00
Niobrara										
7,076.71	59.03	136.36	6,952.91	-251.62	239.95	347.69	8.00	8.00	0.00	0.00
Niobrara A										
7,092.47	60.29	136.36	6,960.86	-261.46	249.33	361.29	8.00	8.00	0.00	0.00
Niobrara A Base										
7,100.00	60.90	136.36	6,964.56	-266.21	253.86	367.85	8.00	8.00	0.00	0.00
7,200.00	68.90	136.36	7,006.95	-331.69	316.31	458.33	8.00	8.00	0.00	0.00
7,299.65	76.87	136.36	7,036.26	-400.56	381.98	553.49	8.00	8.00	0.00	0.00
Niobrara B										
7,300.00	76.90	136.36	7,036.34	-400.80	382.21	553.83	8.00	8.00	0.00	0.00
7,400.00	84.90	136.36	7,052.15	-472.20	450.30	652.49	8.00	8.00	0.00	0.00
7,401.29	85.00	136.36	7,052.26	-473.13	451.19	653.78	8.00	8.00	0.00	0.00
End Build at 7401.29ft - 7" Casing Pt.										
7,408.87	85.00	136.36	7,052.92	-478.60	456.40	661.33	0.00	0.00	0.00	0.00
Nio B Tgt top										
7,438.00	85.00	136.36	7,055.46	-499.60	476.43	690.35	0.00	0.00	0.00	0.00
Hold Angle at 85.00										
7,476.29	85.00	136.36	7,058.80	-527.20	502.75	728.49	0.00	0.00	0.00	0.00
Kickoff at 7476.29ft										
7,500.00	86.90	136.36	7,060.47	-544.32	519.07	752.14	8.00	8.00	0.00	0.00
7,506.00	87.38	136.36	7,060.77	-548.65	523.21	758.13	8.00	8.00	0.00	0.00
Build Rate = 8.00°/100ft										
7,536.86	89.85	136.36	7,061.52	-570.98	544.50	788.98	8.00	8.00	0.00	0.00
Nio B Target										
7,538.79	90.00	136.36	7,061.52	-572.38	545.83	790.91	8.00	8.00	0.00	0.00
7,541.04	90.18	136.36	7,061.52	-574.00	547.38	793.16	8.00	8.00	0.06	0.44
End Build at 7541.04ft										
7,600.00	90.18	136.36	7,061.33	-616.67	588.07	852.12	0.00	0.00	0.00	0.44
7,700.00	90.18	136.36	7,061.02	-689.04	657.08	952.12	0.00	0.00	0.00	0.00
7,800.00	90.18	136.36	7,060.71	-761.41	726.09	1,052.12	0.00	0.00	0.00	0.00
7,900.00	90.18	136.36	7,060.39	-833.78	795.10	1,152.12	0.00	0.00	0.00	0.00
8,000.00	90.18	136.36	7,060.08	-906.15	864.11	1,252.12	0.00	0.00	0.00	0.00
8,100.00	90.18	136.36	7,059.76	-978.52	933.12	1,352.12	0.00	0.00	0.00	0.00
8,200.00	90.18	136.36	7,059.45	-1,050.90	1,002.13	1,452.12	0.00	0.00	0.00	0.00
8,300.00	90.18	136.36	7,059.13	-1,123.27	1,071.14	1,552.12	0.00	0.00	0.00	0.00
8,400.00	90.18	136.36	7,058.82	-1,195.64	1,140.15	1,652.12	0.00	0.00	0.00	0.00
8,500.00	90.18	136.36	7,058.50	-1,268.01	1,209.16	1,752.12	0.00	0.00	0.00	0.00
8,600.00	90.18	136.36	7,058.19	-1,340.38	1,278.17	1,852.12	0.00	0.00	0.00	0.00
8,700.00	90.18	136.36	7,057.88	-1,412.75	1,347.18	1,952.12	0.00	0.00	0.00	0.00
8,800.00	90.18	136.36	7,057.56	-1,485.12	1,416.19	2,052.12	0.00	0.00	0.00	0.00
8,900.00	90.18	136.36	7,057.25	-1,557.49	1,485.20	2,152.12	0.00	0.00	0.00	0.00
9,000.00	90.18	136.36	7,056.93	-1,629.86	1,554.21	2,252.11	0.00	0.00	0.00	0.00



## Plan Report for Burnett PC GK06-99HZ - Plan #1 Proposal

Measured Depth (ft)	Inclination (°)	Azimuth (°)	Vertical Depth (ft)	+N/-S (ft)	+E/-W (ft)	Vertical Section (ft)	Dogleg Rate (°/100ft)	Build Rate (°/100ft)	Turn Rate (°/100ft)	Toolface Azimuth (°)
9,100.00	90.18	136.36	7,056.62	-1,702.23	1,623.23	2,352.11	0.00	0.00	0.00	0.00
9,200.00	90.18	136.36	7,056.30	-1,774.60	1,692.24	2,452.11	0.00	0.00	0.00	0.00
9,300.00	90.18	136.36	7,055.99	-1,846.97	1,761.25	2,552.11	0.00	0.00	0.00	0.00
9,400.00	90.18	136.36	7,055.67	-1,919.34	1,830.26	2,652.11	0.00	0.00	0.00	0.00
9,500.00	90.18	136.36	7,055.36	-1,991.71	1,899.27	2,752.11	0.00	0.00	0.00	0.00
Hold Angle at 90.18										
9,600.00	90.18	136.36	7,055.04	-2,064.08	1,968.28	2,852.11	0.00	0.00	0.00	0.00
9,700.00	90.18	136.36	7,054.73	-2,136.45	2,037.29	2,952.11	0.00	0.00	0.00	0.00
9,800.00	90.18	136.36	7,054.42	-2,208.82	2,106.30	3,052.11	0.00	0.00	0.00	0.00
9,900.00	90.18	136.36	7,054.10	-2,281.19	2,175.31	3,152.11	0.00	0.00	0.00	0.00
10,000.00	90.18	136.36	7,053.79	-2,353.56	2,244.32	3,252.11	0.00	0.00	0.00	0.00
10,100.00	90.18	136.36	7,053.47	-2,425.93	2,313.33	3,352.11	0.00	0.00	0.00	0.00
10,200.00	90.18	136.36	7,053.16	-2,498.30	2,382.34	3,452.11	0.00	0.00	0.00	0.00
10,300.00	90.18	136.36	7,052.84	-2,570.67	2,451.35	3,552.11	0.00	0.00	0.00	0.00
10,400.00	90.18	136.36	7,052.53	-2,643.04	2,520.36	3,652.11	0.00	0.00	0.00	0.00
10,500.00	90.18	136.36	7,052.21	-2,715.41	2,589.37	3,752.11	0.00	0.00	0.00	0.00
10,600.00	90.18	136.36	7,051.90	-2,787.78	2,658.38	3,852.11	0.00	0.00	0.00	0.00
10,700.00	90.18	136.36	7,051.58	-2,860.15	2,727.39	3,952.11	0.00	0.00	0.00	0.00
10,800.00	90.18	136.36	7,051.27	-2,932.52	2,796.40	4,052.11	0.00	0.00	0.00	0.00
10,900.00	90.18	136.36	7,050.96	-3,004.89	2,865.41	4,152.11	0.00	0.00	0.00	0.00
11,000.00	90.18	136.36	7,050.64	-3,077.26	2,934.42	4,252.10	0.00	0.00	0.00	0.00
11,100.00	90.18	136.36	7,050.33	-3,149.63	3,003.43	4,352.10	0.00	0.00	0.00	0.00
11,200.00	90.18	136.36	7,050.01	-3,222.01	3,072.44	4,452.10	0.00	0.00	0.00	0.00
11,300.00	90.18	136.36	7,049.70	-3,294.38	3,141.45	4,552.10	0.00	0.00	0.00	0.00
11,400.00	90.18	136.36	7,049.38	-3,366.75	3,210.46	4,652.10	0.00	0.00	0.00	0.00
11,500.00	90.18	136.36	7,049.07	-3,439.12	3,279.47	4,752.10	0.00	0.00	0.00	0.00
11,600.00	90.18	136.36	7,048.75	-3,511.49	3,348.49	4,852.10	0.00	0.00	0.00	0.00
11,700.00	90.18	136.36	7,048.44	-3,583.86	3,417.50	4,952.10	0.00	0.00	0.00	0.00
11,731.68	90.18	136.36	7,048.34	-3,606.78	3,439.36	4,983.78	0.00	0.00	0.00	0.00
Burnett PC GK06-99HZ Plan #1 BH Tgt										

Plan Annotations

Measured Depth (ft)	Vertical Depth (ft)	Local Coordinates		Comment
		+N/-S (ft)	+E/-W (ft)	
6,338.79	6,338.79	0.00	0.00	Kickoff at 6338.79ft
6,900.00	6,844.30	-151.15	144.14	Build Rate = 8.00°/100ft
7,401.29	7,052.26	-473.13	451.19	End Build at 7401.29ft
7,438.00	7,055.46	-499.60	476.43	Hold Angle at 85.00
7,476.29	7,058.80	-527.20	502.75	Kickoff at 7476.29ft
7,506.00	7,060.77	-548.65	523.21	Build Rate = 8.00°/100ft
7,541.04	7,061.52	-574.00	547.38	End Build at 7541.04ft
9,500.00	7,055.36	-1,991.71	1,899.27	Hold Angle at 90.18
11,731.68	7,048.34	-3,606.78	3,439.36	Total Depth = 11731.68ft

Vertical Section Information

Angle Type	Target	Azimuth (°)	Origin Type	Origin +N/-S (ft)	Origin +E/-W (ft)	Start TVD (ft)
Target	Burnett PC GK06-99HZ Plan #1 BH Tgt	136.36	Slot	0.00	0.00	0.00

Survey tool program

From (ft)	To (ft)	Survey/Plan	Survey Tool
0.00	11,731.68	Plan #1 Proposal	MWD

## Plan Report for Burnett PC GK06-99HZ - Plan #1 Proposal

### Casing Details

Measured Depth (ft)	Vertical Depth (ft)	Name	Casing Diameter (")	Hole Diameter (")
7,401.29	7,052.26	7" Casing Pt.	7	8-3/4

### Formation Details

Measured Depth (ft)	Vertical Depth (ft)	Name	Lithology	Dip (°)	Dip Direction (°)
	7,072.00	Nio B Tgt Base		-0.18	136.36
7,055.94	6,943.00	Niobrara		-0.18	136.36
7,076.71	6,954.00	Niobrara A		-0.18	136.36
7,092.47	6,962.00	Niobrara A Base		-0.18	136.36
7,299.65	7,038.00	Niobrara B		-0.18	136.36
7,408.87	7,055.00	Nio B Tgt top		-0.18	136.36
7,536.86	7,064.00	Nio B Target		-0.18	136.36

### *Targets associated with this wellbore*

Target Name	TVD (ft)	+N/-S (ft)	+E/-W (ft)	Shape
Burnett PC GK06-99HZ S. 600' Setback	0.00	0.00	0.00	Polygon
Burnett PC GK06-99HZ S. Section Line	0.00	0.00	0.00	Polygon
Burnett PC GK06-99HZ N. Section Line	0.00	0.00	0.00	Polygon
Burnett PC GK06-99HZ W. Section Line	0.00	0.00	0.00	Polygon
Burnett PC GK06-99HZ E. 600' Setback	0.00	0.00	0.00	Polygon
Burnett PC GK06-99HZ W. 600' Setback	0.00	0.00	0.00	Polygon
Burnett PC GK06-99HZ E. Section Line	0.00	0.00	0.00	Polygon
Burnett PC GK06-99HZ N. 600' Setback	0.00	0.00	0.00	Polygon
Burnett PC GK06-99HZ Plan #1 BH Tgt	7,048.34	-3,606.78	3,439.36	Point

## North Reference Sheet for Sec. 6-T11N-R61W - Burnett PC GK06-99HZ - Plan #1

All data is in US Feet unless otherwise stated. Directions and Coordinates are relative to True North Reference.

Vertical Depths are relative to RKB 24' @ 5286.00ft (Original Well Elev). Northing and Easting are relative to Burnett PC GK06-99HZ

Coordinate System is US State Plane 1983, Colorado Northern Zone using datum North American Datum 1983, ellipsoid GRS 1980

Projection method is Lambert Conformal Conic (2 parallel)

Central Meridian is -105.50°, Longitude Origin:0.000000°, Latitude Origin:40.783333°

False Easting: 3,000,000.00ft, False Northing: 1,000,000.00ft, Scale Reduction: 1.00003279

Grid Coordinates of Well: 1,593,897.14 ft N, 3,344,213.79 ft E

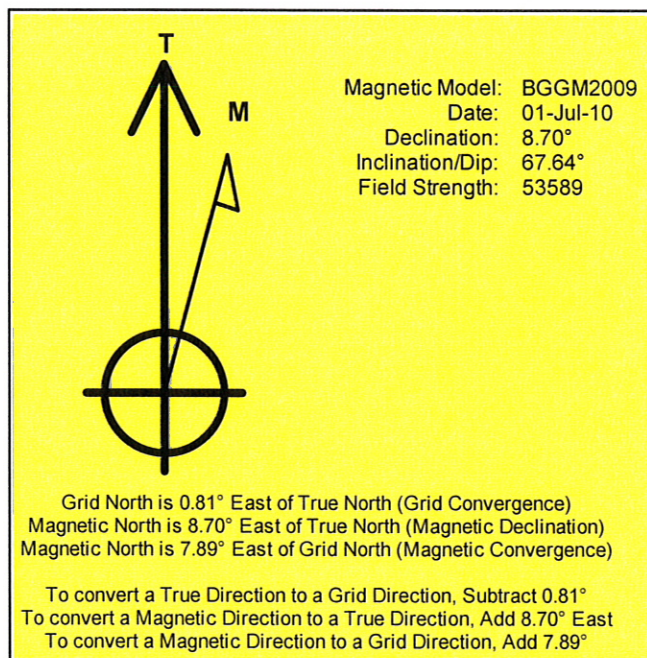
Geographical Coordinates of Well: 40° 57' 25.09" N, 104° 15' 13.72" W

Grid Convergence at Surface is: 0.81°

Based upon Minimum Curvature type calculations, at a Measured Depth of 11,731.68ft

the Bottom Hole Displacement is 4,983.78ft in the Direction of 136.36° (True).

Magnetic Convergence at surface is: -7.89° ( 1 July 2010, , BGGM2009)





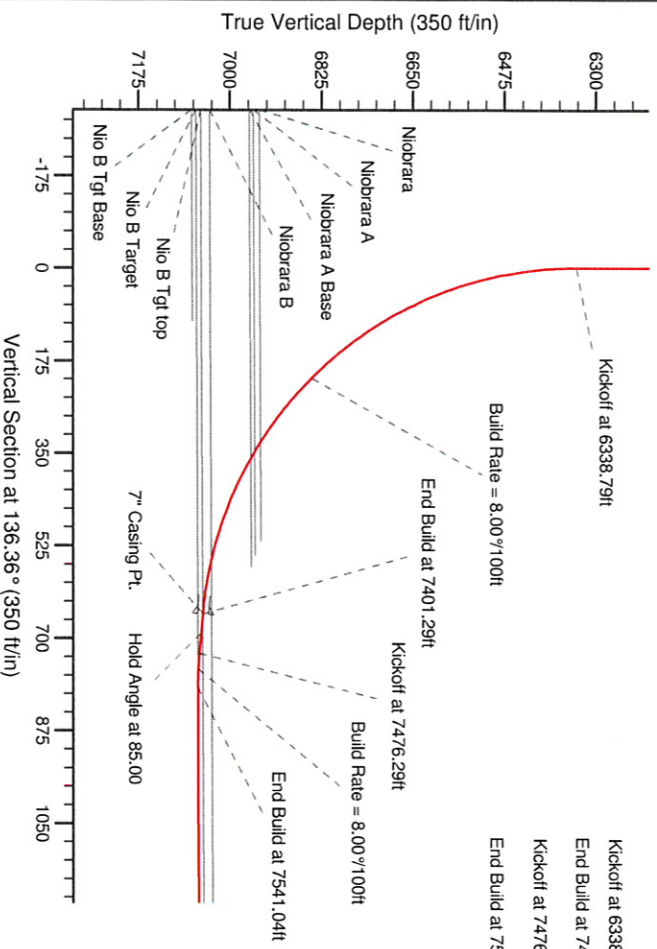
Project: Weld County, CO  
Site: Sec. 6-T11N-R61W  
Well: Burnett PC GK06-99HZ  
Wellbore: Plan #1  
Design: Plan #1 Proposal

# Noble Energy

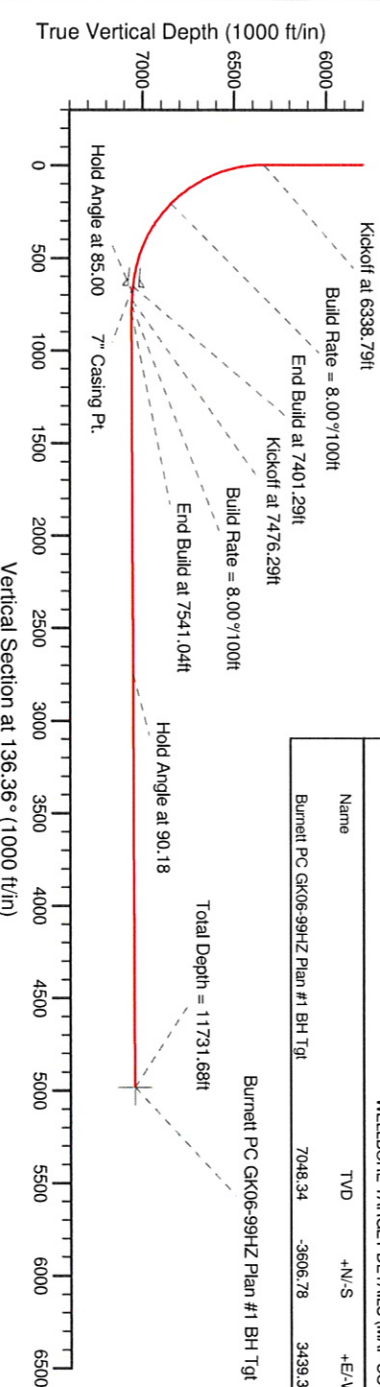
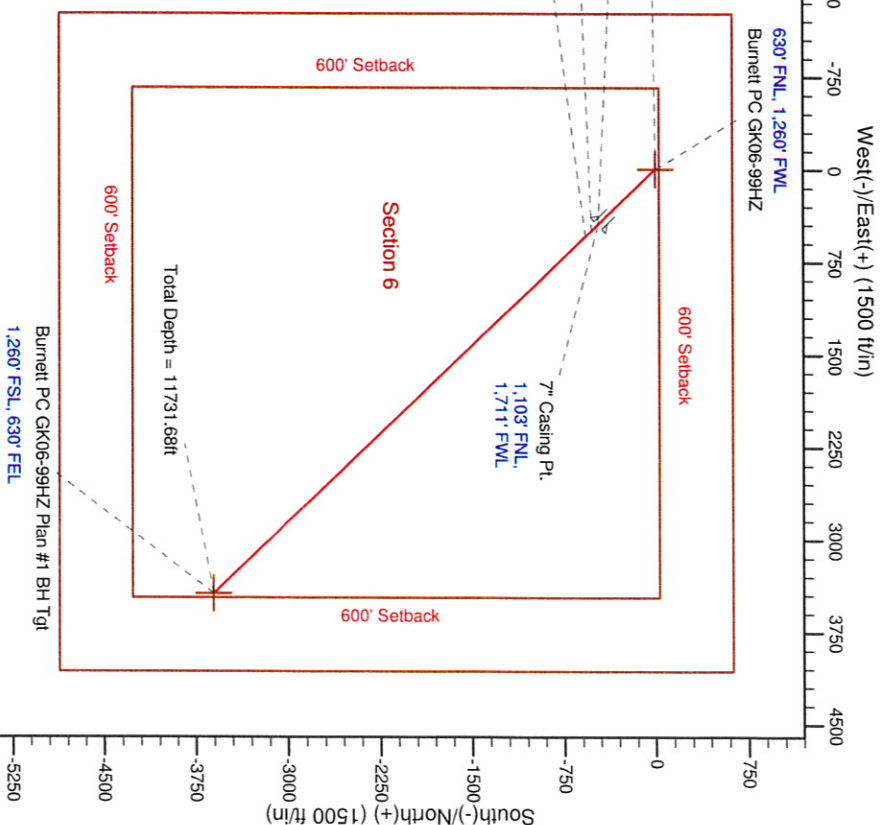
HALLIBURTON  
Specialty Drilling

## SECTION DETAILS

Sec	MD	Inc	Azi	TVD	+N/-S	+E/-W	Dleg	Tface	VSec	Target
1	0.00	0.00	0.00	0.00	0.00	0.00	0.00	0.00	0.00	
2	6338.79	0.00	0.00	6338.79	0.00	0.00	0.00	0.00	0.00	
3	7401.29	85.00	136.36	7052.26	-473.13	451.19	8.00	136.36	653.78	
4	7476.29	85.00	136.36	7058.80	-527.20	502.75	8.00	0.00	728.49	
5	7538.79	90.18	136.36	7061.52	-572.38	545.83	8.00	0.00	790.91	
6	7541.04	90.18	136.36	7061.52	-574.01	547.38	8.00	0.44	793.16	
7	11731.68	90.18	136.36	-3606.78	3439.36	0.00	0.00	0.00	4983.78	Burnett PC GK06-99HZ Plan #1 BH Tgt



Burnett PC GK06-99HZ Plan #1 BH Tgt  
1,260' FSL, 630' FEL



## WELLBORE TARGET DETAILS (MAP CO-ORDINATES AND LAT/LONG)

Name	TVD	+N/-S	+E/-W	Northing	Easting	Latitude	Longitude	Shape
Burnett PC GK06-99HZ Plan #1 BH Tgt	7048.34	-3606.78	3439.36	1590338.93	3347703.61	40.947070	-104.241360	Point

## WELL DETAILS: Burnett PC GK06-99HZ

Ground Level:	5262.00	Longitude
Northing	3344213.79	40.956970
Easting	3344213.79	-104.253810

Plan: Plan #1 Proposal (Burnett PC GK06-99HZ/Plan #1)

Created By: Paul A. Bizan Date: 10/37, May 06 2010

Checked: \_\_\_\_\_ Date: \_\_\_\_\_

Reviewed: \_\_\_\_\_ Date: \_\_\_\_\_

Approved: \_\_\_\_\_ Date: \_\_\_\_\_