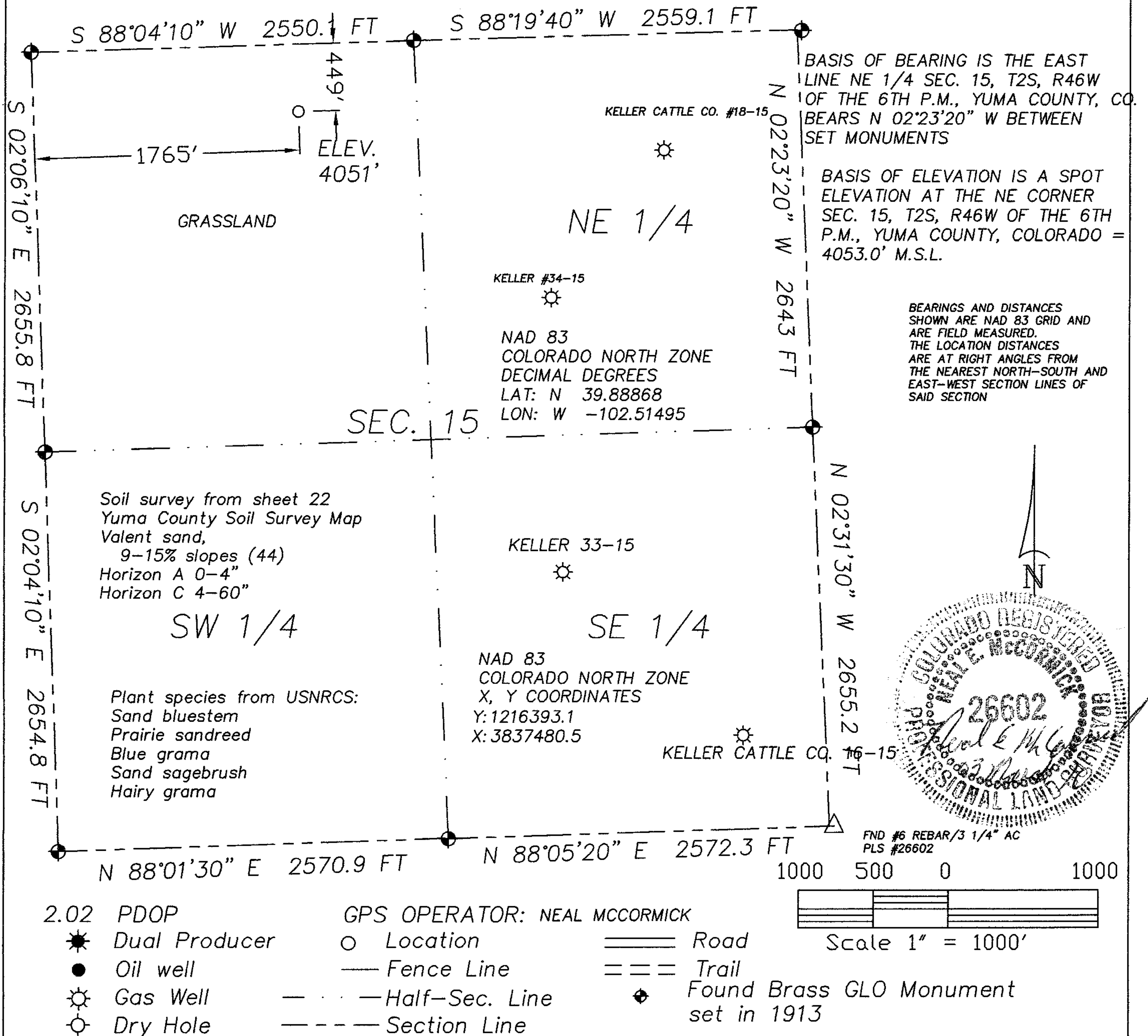



The accompanying plat is an accurate representation showing the location of a proposed well. This location may be described as a point 449 feet South of the North line, and 1765 feet East of the West line of Section 15 Township 2 South , Range 46 West of the 6th P.M., Yuma County , Colorado. The surface elevation at this point is 4051 feet m.s.l.  
 Note: This is not a land survey plat.  
 There are no visible improvements within 400 feet of the location



 <div><div>GREAT PLAINS SURVEYING, INC.</div><div>20575 Co. Rd. 21 Haxtun, CO 80731</div><div>Phone 970-774-3602 Fax 970-774-3601</div></div>	DATE OF FIELD WORK: 27 FEBRUARY 2010		DATE OF DRAWING: 03 MARCH 2010
	JOHNSON PRESCOTT 21-15 2S46W		
	NE 1/4 NW 1/4 SEC. 15, T2S, R46W		
	AUGUSTUS ENERGY PARTNERS, LLC.		
	YUMA COUNTY, COLORADO		