

GREAT PLAINS  
SURVEYING, INC.

20575 Co. Rd. 21 Phone 970-774-3602  
Haxtun, CO 80731 Fax 970-774-3601

CROSS SECTIONS A & B, HORZ. SCALE 1" = 50'  
VERT. SCALE 1" = 10'

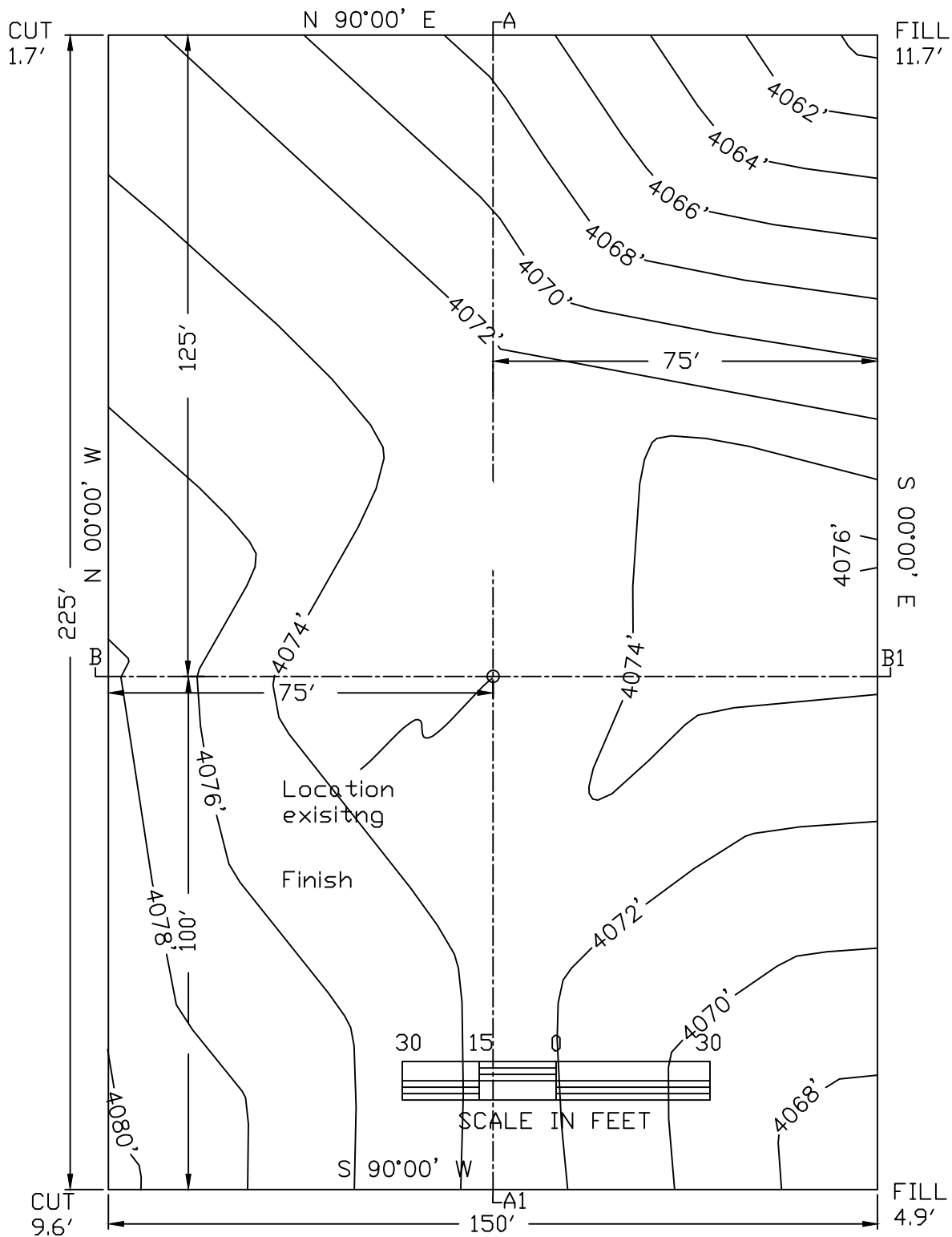
JOHNSON PRESCOTT 12-15 2S46W

AUGUSTUS ENERGY PARTNERS, LLC

YUMA COUNTY, COLORADO 27 FEBRUARY, 2010

WC12-15 2S46WGPS

10401-108



GREAT PLAINS  
SURVEYING, INC.

20575 Co. Rd. 21 Phone 970-774-3602  
Haxtun, CO 80731 Fax 970-774-3601

JOHNSON PRESCOTT 12-15 2S46W

PAD LAYOUT

AUGUSTUS ENERGY PARTNERS, LLC.

YUMA COUNTY, COLORADO 27 FEBRUARY 2010

WP12-152S46GPS

10101-108