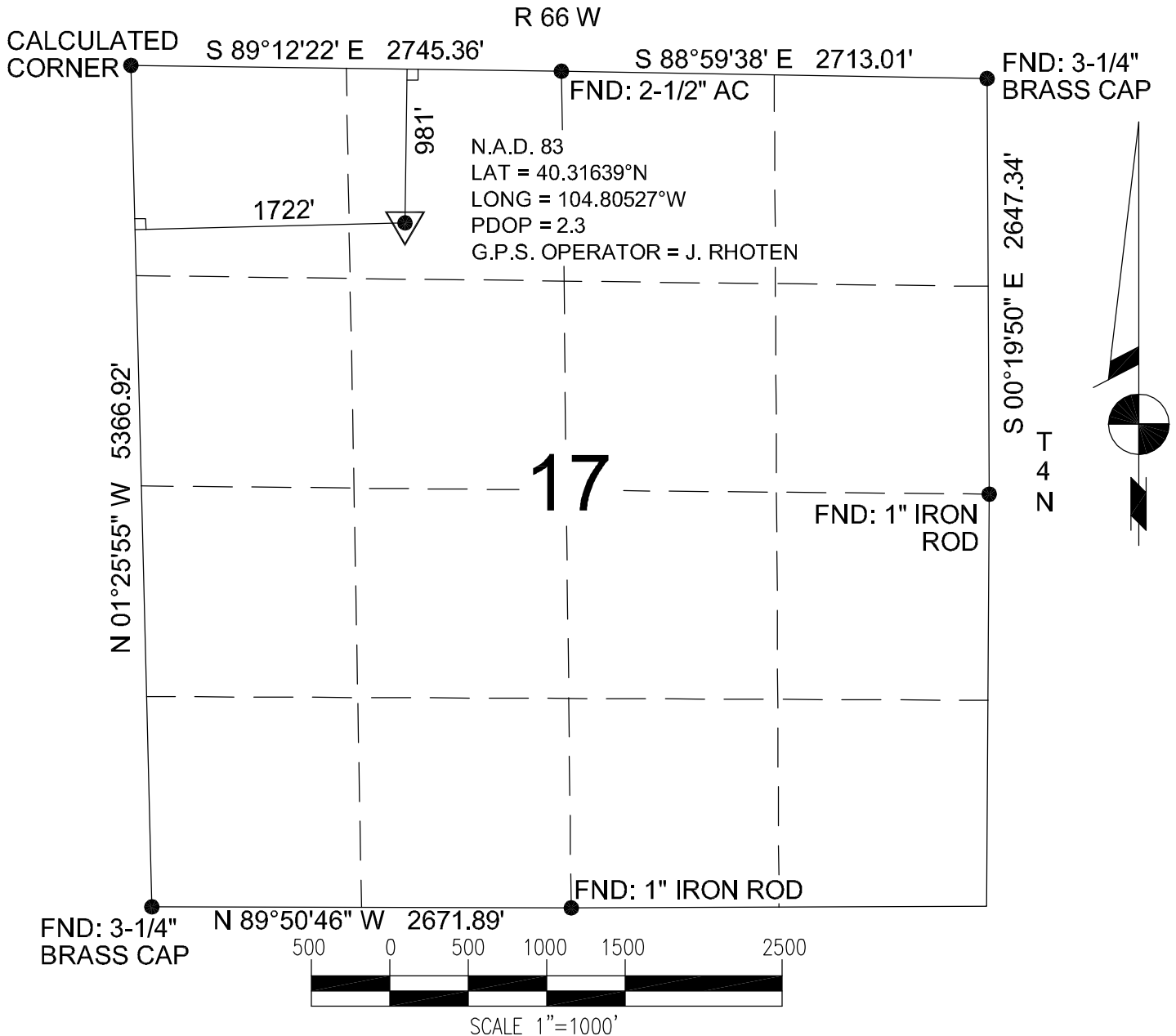


BASIS OF BEARINGS: THE WEST LINE OF SECTION 17, AS SHOWN HEREON.



Power Surveying Co., Inc. of Frederick, Colorado has in accordance with a request from MIKE PRITCHARD for KP KAUFFMAN determined the location of POPE 18-17 to be 981' FNL & 1722 FWL Section 17, Township 4 NORTH Range 66 WEST of the Sixth Principal Meridian, WELD County, Colorado

LOCATION NOTES

LOCATION FALLS IN: PASTURE

IMPROVEMENTS: NONE WITHIN 200' OF LOCATION

ELEVATION DETERMINED FROM NAVD 1988 DATUM.  
GROUND ELEVATION = 4702'

DISTANCES AND BEARINGS ARE FIELD MEASURED  
UNLESS OTHERWISE NOTED.

LEGEND

- SECTION CORNER (AS NOTED)
- ▽ PROPOSED WELL LOCATION



7800 MILLER DRIVE, UNIT C  
FREDERICK, COLORADO 80504

PH. 303-702-1617  
FAX. 303-702-1488  
WWW.POWERSURVEYING.COM

KEVIN E RANDOLPH  
COLORADO P.L.S. #35581

FIELD DATE: 5-18-07 WO# 501-06-1138A  
DATE OF COMPLETION: 5-23-07  
REVISED : 1-15-2009 (NAME CHANGE)