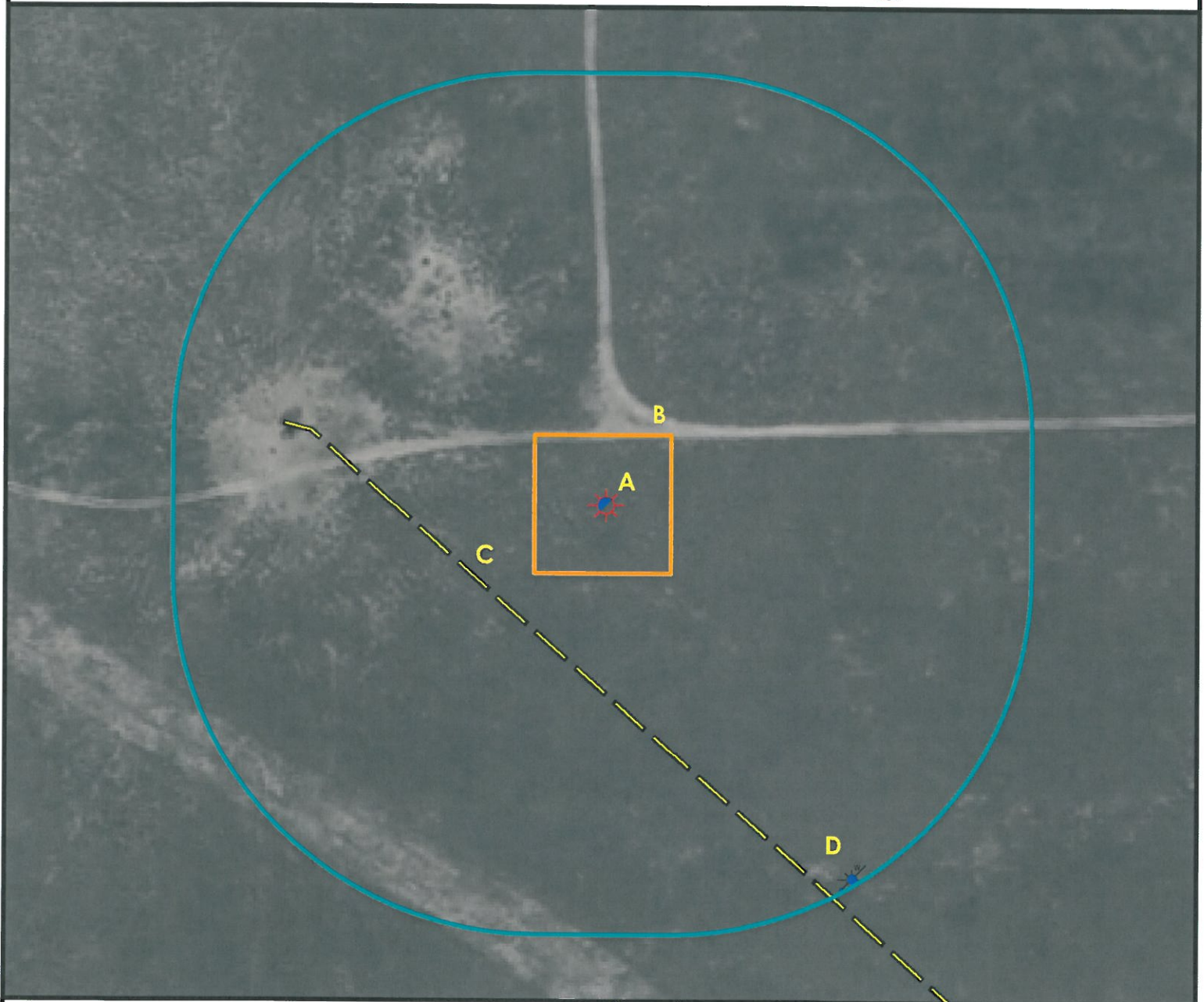
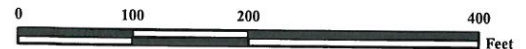


Location Drawing



- A. Proposed Well WHITE 42-11 1S46W.
- B. Operational Disturbance Area.
- C. The Overhead Power Line is 162' SW.
- D. Water Well (Permit # 32495) is 494' SE.



Legend

- | | | | |
|--|----------------------|--|-----------------------|
| | Proposed Well | | Building/Residence |
| | Existing Well | | Oil & Gas Equipment |
| | Water Well | | Water Body |
| | Pivot Pedestal | | Utility Box |
| | CattleGuard/Gate | | Railroad |
| | Bridge | | Fence |
| | Disturbance Area | | Overhead Power Line |
| | 400' Radius | | Pipeline |
| | Facilities Enclosure | | County Road |
| | | | Intermittent Stream |
| | | | Concrete Walled Ditch |

400ft Radius Map

WHITE 42-11 1S46W

Surface Location: T1S R46W S11
Description of surface use: Rangeland

Field Date: 5/6/2010
Drawing Date: 5/13/2010
Drafter: KLM
Checked By: BHF
Aerial Photo supplied by NAIP (2009)

Prepared for:
AUGUSTUS ENERGY PARTNERS, LLC
P.O. Box 250
Wray, CO 80758



Use our resources to find yours!
www.petro-fs.com

1801 W. 13th Ave Suite 207
Denver, CO 80204 (303) 928-7128
111 E. Third Street
Rifle, CO 81650 (970) 625-4740