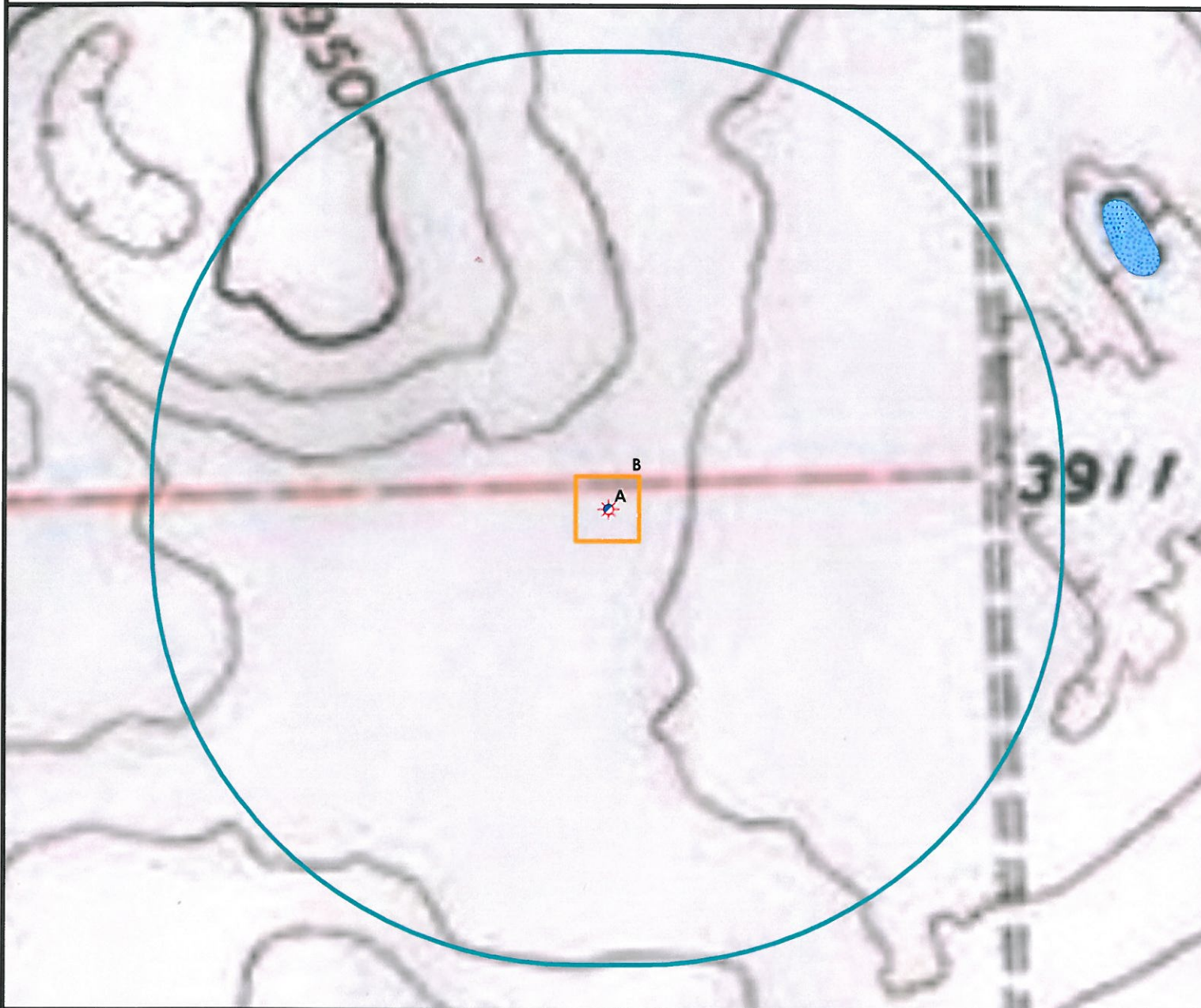


# Hydrology Map



A. Proposed Well WHITE 42-11 1S46W.

B. Operational Disturbance Area.

C. There are no Surface Waters Within a 1000' Radius of the Proposed Oil & Gas Location.



## Legend

	Proposed Well		Building/Residence
	Existing Well		Oil & Gas Equipment
	Water Well		Water Body
	Pivot Pedestal		Utility Box
	CattleGuard/Gate		Railroad
	Bridge		Fence
	Disturbance Area		Overhead Power Line
	1000' Radius		Pipeline
	Facilities Enclosure		County Road
			Intermittent Stream
			Concrete Walled Ditch

## 1000ft Radius Map of Surface Water and Riparian Areas

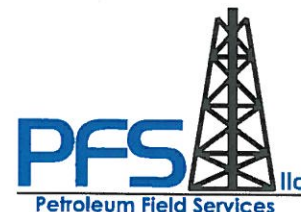
### WHITE 42-11 1S46W

Surface Location: T1S R46W S11

Field Date: 5/6/2010  
 Drawing Date: 5/13/2010  
 Drafter: KLM  
 Checked By: BHF

Topographic data courtesy of USGS

Prepared for:  
**AUGUSTUS ENERGY PARTNERS, LLC**  
 P.O. Box 250  
 Wray, CO 80758



Use our resources to find yours!  
[www.petro-fs.com](http://www.petro-fs.com)

1801 W. 13th Ave Suite 207  
 Denver, CO 80204  
 (303) 928-7128  
 111 E. Third Street  
 Rifle, CO 81650  
 (970) 625-4740