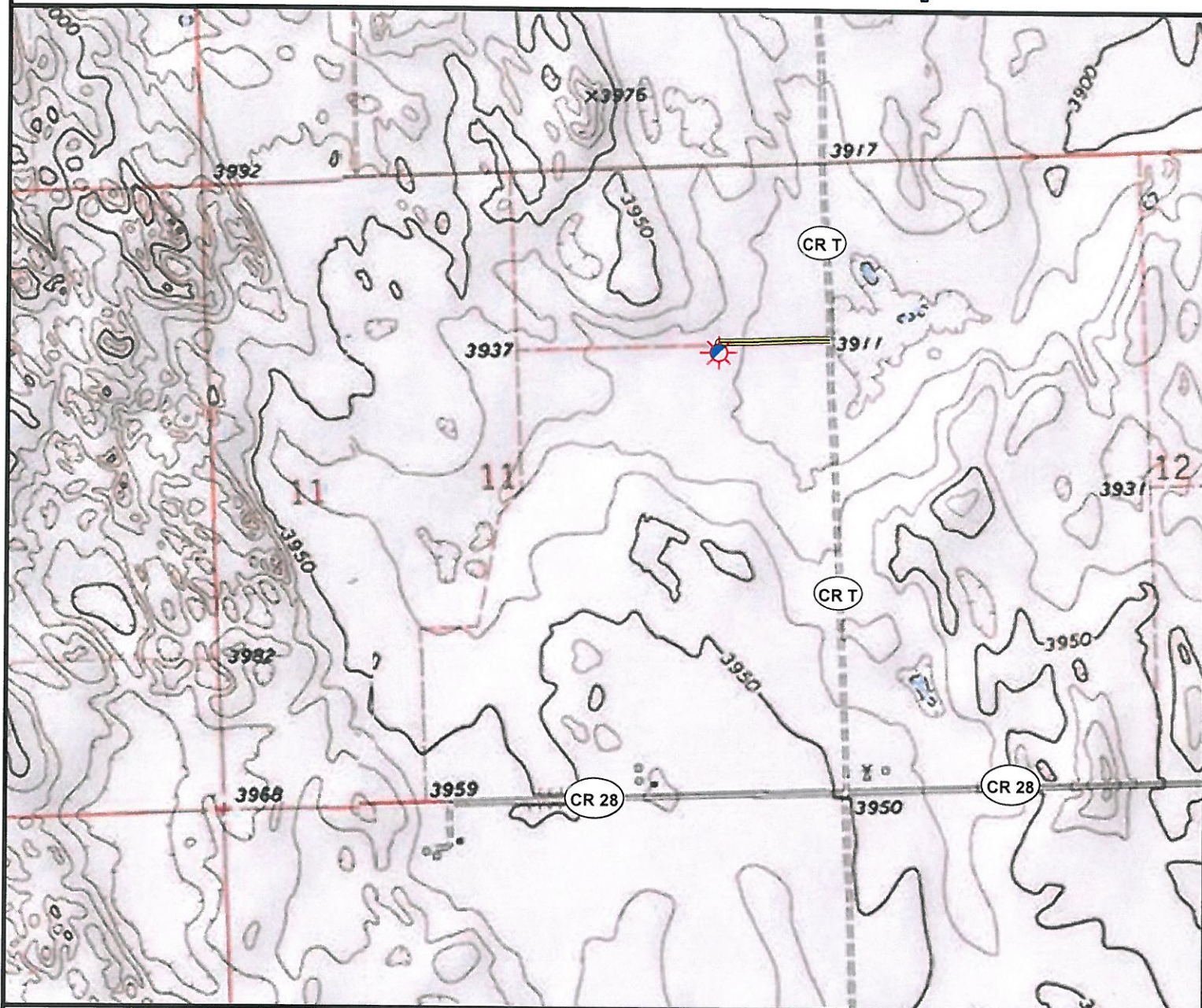


Access Road Map



0 0.125 0.25 0.5 Miles

Legend

- | | | | |
|--|----------------------|--|-----------------------|
| | Proposed Well | | Building/Residence |
| | Existing Well | | Oil & Gas Equipment |
| | Water Well | | Water Body |
| | Pedestal | | Utility Box |
| | CattleGuard/Gate | | Railroad |
| | Bridge | | Fence |
| | Disturbance Area | | Overhead Power Line |
| | 1000' Radius | | Pipeline |
| | Facilities Enclosure | | Access Road |
| | | | Intermittent Stream |
| | | | Concrete Walled Ditch |

Access Road Map

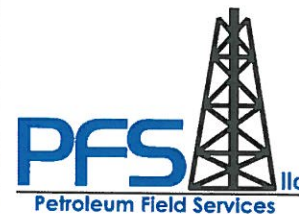
WHITE 42-11 1S46W

Surface Location: T1S R46W S11

Field Date: 5/06/2010
 Drawing Date: 5/13/2010
 Drafter: KLM
 Checked By: BHF

Topographic data courtesy of USGS

Prepared for:
AUGUSTUS ENERGY PARTNERS, LLC
 P.O. Box 250
 Wray, CO 80758



Use our resources to find yours!
www.petro-fs.com

1801 W. 13th Ave Suite 207
 Denver, CO 80204
 (303) 928-7128
 111 E. Third Street
 Rifle, CO 81650
 (970) 625-4740