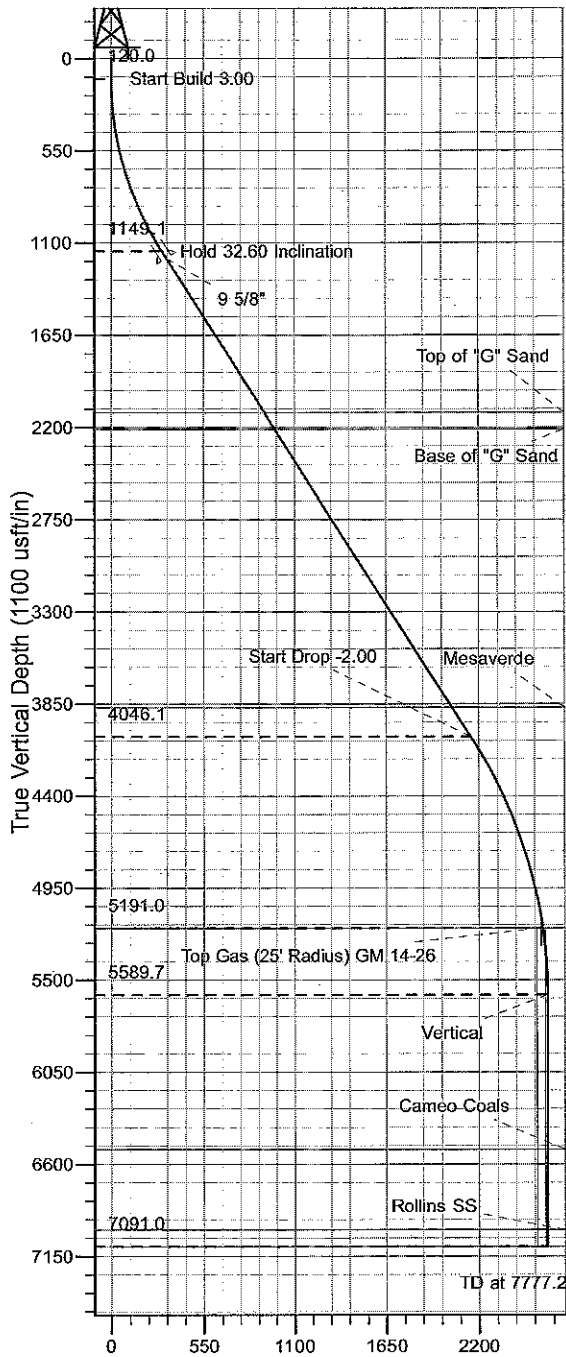
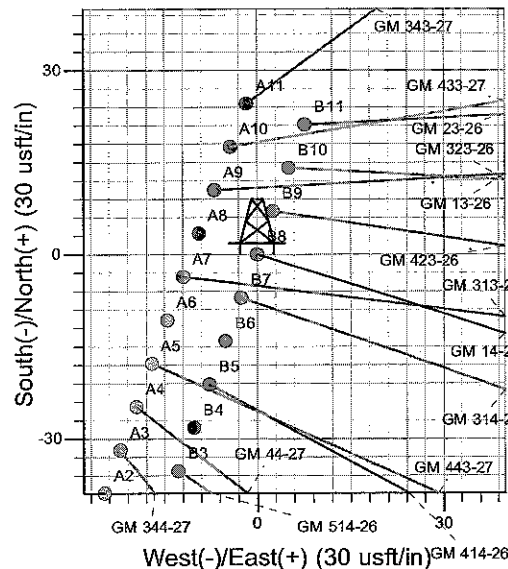
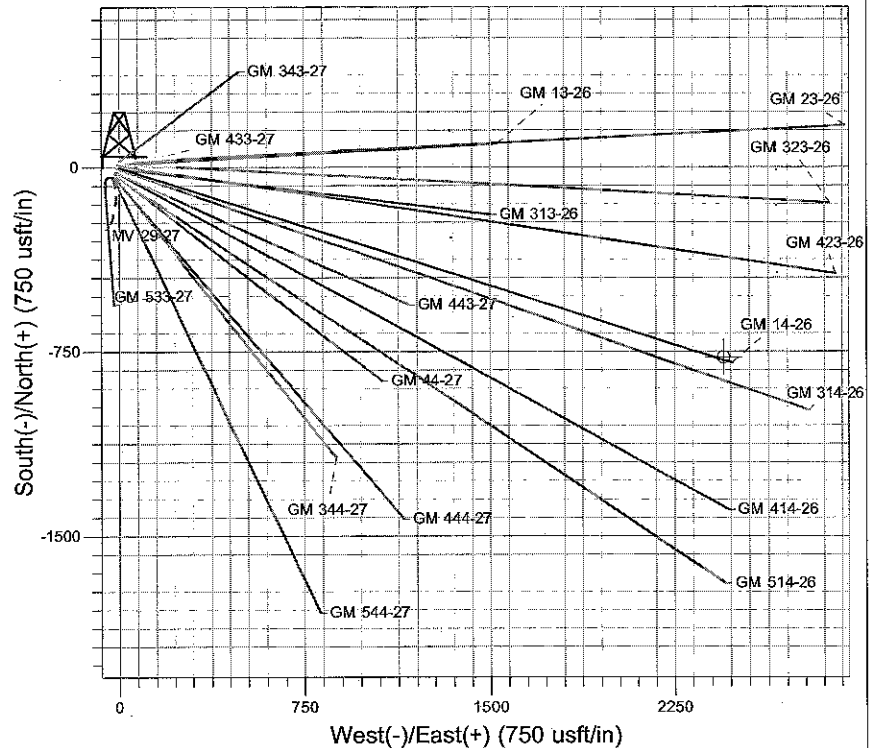




Well Name: GM 14-26  
Surface Location: MV 29-27 Pad  
North American Datum 1983 , US State Plane 1983, Colorado Central Zone  
Ground Elevation: 5659.0  
+N/-S +E/-W Northing Easting Latitude Longitude Slot  
0.0 0.0 1614978.14 2269214.11 39° 29' 35.854 N 108° 5' 23.459 W B8  
KELLY BUSHING @ 5683.0usft (H&P 271 (24'KB) JMS)



Vertical Section at 107.79° (1100 usft/in)



Project: RU 27-06S-096W  
Site: MV 29-27 Pad  
Well: GM 14-26  
Plan #1 29Jan09 kjs



Azimuths to True North  
Magnetic North: 10.68°  
Magnetic Field  
Strength: 52503.3snT  
Dip Angle: 65.79°  
Date: 1/29/2009  
Model: IGRF2005-10

#### ANNOTATIONS

TVD	MD	Inc	Azi	+N/-S	+E/-W	Vsect	Departure	Annotation
120.0	120.0	0.00	0.00	0.0	0.0	0.0	0.0	Start Build 3.00
1149.1	1206.8	32.60	107.79	-91.9	286.6	301.0	301.0	Hold 32.60 Inclination
4046.1	4645.7	32.60	107.79	-658.1	2051.0	2153.9	2153.9	Start Drop -2.00
5191.0	5875.9	8.00	107.79	-787.5	2454.3	2577.5	2577.5	Top Gas
5589.7	6275.9	0.00	0.00	-796.0	2480.8	2605.4	2605.4	Vertical
7091.0	7777.2	0.00	0.00	-796.0	2480.8	2605.4	2605.4	TD at 7777.2

# **PICEANCE VLY NAD 83**

**RU 27-06S-096W**

**MV 29-27 Pad**

**GM 14-26 - Slot B8**

**Wellbore #1**

**Plan: Plan #1 29Jan09 kjs**

## **Standard Planning Report - Geographic**

**05 May, 2010**

# Williams

## Planning Report - Geographic

<b>Database:</b>	Compass R5000 WIN AUTH	<b>Local Co-ordinate Reference:</b>	Well GM 14-26 - Slot B8
<b>Company:</b>	PICEANCE VLY NAD 83	<b>TVD Reference:</b>	KELLY BUSHING @ 5683.0usft (H&P 271 (24'KB) JMS)
<b>Project:</b>	RU 27-06S-096W	<b>MD Reference:</b>	KELLY BUSHING @ 5683.0usft (H&P 271 (24'KB) JMS)
<b>Site:</b>	MV 29-27 Pad	<b>North Reference:</b>	True
<b>Well:</b>	GM 14-26	<b>Survey Calculation Method:</b>	Minimum Curvature
<b>Wellbore:</b>	Wellbore #1		
<b>Design:</b>	Plan #1 29Jan09 kjs		

<b>Project</b>	RU 27-06S-096W		
<b>Map System:</b>	US State Plane 1983	<b>System Datum:</b>	Mean Sea Level
<b>Geo Datum:</b>	North American Datum 1983		
<b>Map Zone:</b>	Colorado Central Zone		

Site		MV 29-27 Pad			
Site Position:		Northing:	1,614,933.00 usft	Latitude:	39° 29' 35.400 N
From:	Map	Easting:	2,269,185.50 usft	Longitude:	108° 5' 23.807 W
Position Uncertainty:	0.0 usft	Slot Radius:	13.200 in	Grid Convergence:	-1.633

Well	GM 14-26 - Slot B8					
Well Position	+N/-S	0.0 usft	Northing:	1,614,978.14 usft	Latitude:	39° 29' 35.854 N
	+E/-W	0.0 usft	Easting:	2,269,214.11 usft	Longitude:	108° 5' 23.459 W
Position Uncertainty		0.0 usft	Wellhead Elevation:		Ground Level:	5,659.0 usft

<b>Wellbore</b>	Wellbore #1				
<b>Magnetics</b>	<b>Model Name</b>	<b>Sample Date</b>	<b>Declination (°)</b>	<b>Dip Angle (°)</b>	<b>Field Strength (nT)</b>
	IGRF2005-10	1/29/2009	10.680	65.793	52,503

Design	Plan #1 29Jan09 kjs			
Audit Notes:				
Version:	Phase:	PLAN	Tie On Depth:	0.0
Vertical Section:	Depth From (TVD) (usft)	+N/-S (usft)	+E/-W (usft)	Direction (°)
	0.0	0.0	0.0	107.79

Plan Sections										
Measured Depth (usft)	Inclination (°)	Azimuth (°)	Vertical Depth (usft)	+N/-S (usft)	+E/-W (usft)	Dogleg Rate (°/100usft)	Build Rate (°/100usft)	Turn Rate (°/100usft)	TFO (°)	Target
0.0	0.00	0.00	0.0	0.0	0.0	0.00	0.00	0.00	0.000	
120.0	0.00	0.00	120.0	0.0	0.0	0.00	0.00	0.00	0.000	
1,206.8	32.60	107.79	1,149.1	-91.9	286.6	3.00	3.00	0.00	107.789	
4,645.7	32.60	107.79	4,046.1	-658.1	2,051.0	0.00	0.00	0.00	0.000	
5,875.9	8.00	107.79	5,191.0	-787.5	2,454.3	2.00	-2.00	0.00	180.000	Top Gas (25' Radius)
6,275.9	0.00	0.00	5,589.7	-796.0	2,480.8	2.00	-2.00	0.00	180.000	
7,777.2	0.00	0.00	7,091.0	-796.0	2,480.8	0.00	0.00	0.00	0.000	

# Williams

## Planning Report - Geographic

Database:	Compass R5000 WIN AUTH	Local Co-ordinate Reference:	Well GM 14-26 - Slot B8
Company:	PICEANCE VLY NAD 83	TVD Reference:	KELLY BUSHING @ 5683.0usft (H&P 271 (24'KB) JMS)
Project:	RU 27-06S-096W	MD Reference:	KELLY BUSHING @ 5683.0usft (H&P 271 (24'KB) JMS)
Site:	MV 29-27 Pad	North Reference:	True
Well:	GM 14-26	Survey Calculation Method:	Minimum Curvature
Wellbore:	Wellbore #1		
Design:	Plan #1 29Jan09 kjs		

Planned Survey									
Measured Depth (usft)	Inclination (°)	Azimuth (°)	Vertical Depth (usft)	+N/-S (usft)	+E/-W (usft)	Map Northing (usft)	Map Easting (usft)	Latitude	Longitude
0.0	0.00	0.00	0.0	0.0	0.0	1,614,978.14	2,269,214.11	39° 29' 35.854 N	108° 5' 23.459 W
120.0	0.00	0.00	120.0	0.0	0.0	1,614,978.14	2,269,214.11	39° 29' 35.854 N	108° 5' 23.459 W
Start Build 3.00									
1,206.8	32.60	107.79	1,149.1	-91.9	286.6	1,614,878.06	2,269,497.95	39° 29' 34.945 N	108° 5' 19.803 W
Hold 32.60 Inclination									
1,257.0	32.60	107.79	1,191.4	-100.2	312.3	1,614,869.06	2,269,523.46	39° 29' 34.864 N	108° 5' 19.474 W
9 5/8"									
2,348.6	32.60	107.79	2,111.0	-279.9	872.4	1,614,673.46	2,270,078.20	39° 29' 33.088 N	108° 5' 12.330 W
Top of "G" Sand									
2,467.4	32.60	107.79	2,211.0	-299.5	933.3	1,614,652.19	2,270,138.52	39° 29' 32.894 N	108° 5' 11.553 W
Base of "G" Sand									
4,437.9	32.60	107.79	3,871.0	-623.9	1,944.3	1,614,299.12	2,271,139.87	39° 29' 29.688 N	108° 4' 58.656 W
Mesaverde									
4,645.7	32.60	107.79	4,046.1	-658.1	2,051.0	1,614,261.88	2,271,245.48	39° 29' 29.349 N	108° 4' 57.296 W
Start Drop -2.00									
5,875.9	8.00	107.79	5,191.0	-787.5	2,454.3	1,614,121.03	2,271,644.94	39° 29' 28.070 N	108° 4' 52.152 W
Top Gas - Approx. Top Gas									
6,275.9	0.00	0.00	5,589.7	-796.0	2,480.8	1,614,111.76	2,271,671.24	39° 29' 27.986 N	108° 4' 51.813 W
Vertical									
7,197.2	0.00	0.00	6,511.0	-796.0	2,480.8	1,614,111.76	2,271,671.24	39° 29' 27.986 N	108° 4' 51.813 W
Cameo Coals									
7,677.2	0.00	0.00	6,991.0	-796.0	2,480.8	1,614,111.76	2,271,671.24	39° 29' 27.986 N	108° 4' 51.813 W
Rollins SS									
7,777.2	0.00	0.00	7,091.0	-796.0	2,480.8	1,614,111.76	2,271,671.24	39° 29' 27.986 N	108° 4' 51.813 W
TD at 7777.2									

Design Targets									
Target Name	Dip Angle (°)	Dip Dir. (°)	TVD (usft)	+N/-S (usft)	+E/-W (usft)	Northing (usft)	Easting (usft)	Latitude	Longitude
- hit/miss target									
- Shape									
Top Gas (25' Radius) GI	0.00	0.00	5,191.0	-773.7	2,447.7	1,614,135.00	2,271,638.80	39° 29' 28.206 N	108° 4' 52.235 W
- plan misses target center by 15.3usft at 5872.2usft MD (5187.4 TVD, -787.3 N, 2453.8 E)									
- Circle (radius 25.0)									

Casing Points					
Measured Depth (usft)	Vertical Depth (usft)	Name	Casing Diameter (in)	Hole Diameter (in)	
1,257.0	1,191.4	9 5/8"	9.625	12.250	

# Williams

## Planning Report - Geographic

<b>Database:</b>	Compass R5000 WIN AUTH	<b>Local Co-ordinate Reference:</b>	Well GM 14-26 - Slot B8
<b>Company:</b>	PICEANCE VLY NAD 83	<b>TVD Reference:</b>	KELLY BUSHING @ 5683.0usft (H&P 271 (24KB) JMS)
<b>Project:</b>	RU 27-06S-096W	<b>MD Reference:</b>	KELLY BUSHING @ 5683.0usft (H&P 271 (24KB) JMS)
<b>Site:</b>	MV 29-27 Pad	<b>North Reference:</b>	True
<b>Well:</b>	GM 14-26	<b>Survey Calculation Method:</b>	Minimum Curvature
<b>Wellbore:</b>	Wellbore #1		
<b>Design:</b>	Plan #1 29Jan09 kjs		

Formations						
Measured Depth (usft)	Vertical Depth (usft)	Name	Lithology	Dip (°)	Dip Direction (°)	
2,348.6	2,111.0	Top of "G" Sand				
2,467.4	2,211.0	Base of "G" Sand				
4,437.9	3,871.0	Mesaverde				
5,875.9	5,191.0	Approx. Top Gas				
7,197.2	6,511.0	Cameo Coals				
7,677.2	6,991.0	Rollins SS				
7,777.2	7,091.0	TD				

Plan Annotations				
Measured Depth (usft)	Vertical Depth (usft)	Local Coordinates		Comment
		+N/-S (usft)	+E/-W (usft)	
120.0	120.0	0.0	0.0	Start Build 3.00
1,206.8	1,149.1	-91.9	286.6	Hold 32.60 Inclination
4,645.7	4,046.1	-658.1	2,051.0	Start Drop -2.00
5,875.9	5,191.0	-787.5	2,454.3	Top Gas
6,275.9	5,589.7	-796.0	2,480.8	Vertical
7,777.2	7,091.0	-796.0	2,480.8	TD at 7777.2