

T7S, R97W, 6th P.M.

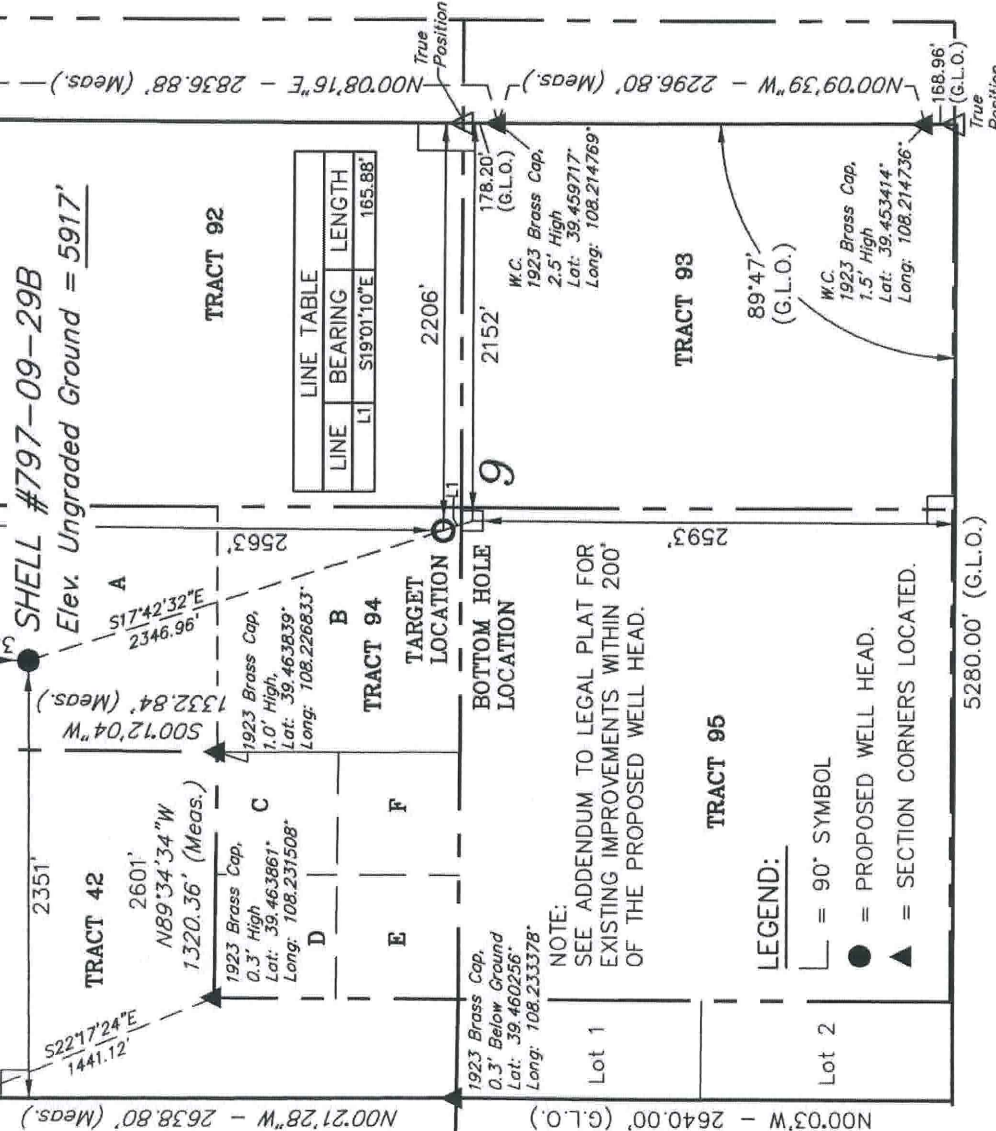
OXY USA WTP LP.

Well location, SHELL #797-09-29B, located as shown in TRACT 94 of Section 9, T7S, R97W, 6th P.M., Garfield County, Colorado.

BASIS OF ELEVATION

SPOT ELEVATION AT THE NORTHWEST CORNER OF SECTION 30, T5S, R95W, 6th P.M. TAKEN FROM THE FORKED GULCH QUADRANGLE, COLORADO, GARFIELD COUNTY, 7.5 MINUTE SERIES (TOPOGRAPHICAL MAP) PUBLISHED BY THE UNITED STATES DEPARTMENT OF THE INTERIOR, GEOLOGICAL SURVEY. SAID ELEVATION IS MARKED AS BEING 5966 FEET.

1923 Brass Cap, 2.0' High, Lot: 39.467519" Long: 108.233450" S89°57'23"W - 2652.81' (Meas.)
1923 Brass Cap, 0.3' High, Lot: 39.467497" Long: 108.226822" S89°57'23"W - 2652.81' (Meas.)
1923 Brass Cap, 0.3' High, Lot: 39.467533" Long: 108.224056" N89°41'01"W - 2626.18' (Meas.)
1923 Brass Cap, 0.5' High, Pile of Stones, Lot: 39.467503" Long: 108.214758" N00°08'16"E - 2836.88' (Meas.)

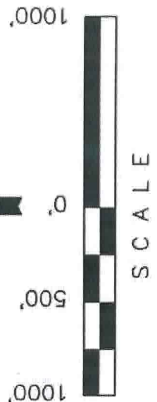


LINE TABLE		
LINE	BEARING	LENGTH
L1	S19°01'10"E	165.88'

NOTE:
SEE ADDENDUM TO LEGAL PLAT FOR EXISTING IMPROVEMENTS WITHIN 200' OF THE PROPOSED WELL HEAD.

LEGEND:

- └ = 90° SYMBOL
- = PROPOSED WELL HEAD.
- ▲ = SECTION CORNERS LOCATED.



CERTIFICATE
THIS IS TO CERTIFY THAT THE ABOVE PLAT WAS PREPARED AND LOCATION AS SHOWN WAS STAKED ON THE GROUND FROM FIELD NOTES OF ACTUAL SURVEYS MADE BY ME OR UNDER MY SUPERVISION AND THAT THE SAME ARE TRUE AND CORRECT TO THE BEST OF MY KNOWLEDGE AND BELIEF.

REGISTERED LAND SURVEYOR
REGISTRATION NO. 17492
STATE OF COLORADO

REVISED: 9-18-07 C.G.

UNTAH ENGINEERING & LAND SURVEYING

85 SOUTH 200 EAST - VERNAL, UTAH 84078
(435) 789-1017

BASIS OF BEARINGS

BASIS OF BEARINGS IS A G.P.S. OBSERVATION. PDOP = 2.7

NAD 83 (BOTTOM HOLE LOCATION)	NAD 83 (TARGET LOCATION)	NAD 83 (SURFACE LOCATION)
LATITUDE = 39°27'36.15" (39.460042)	LATITUDE = 39°27'37.70" (39.460472)	LATITUDE = 39°27'59.78" (39.466606)
LONGITUDE = 108°13'22.90" (108.223028)	LONGITUDE = 108°13'23.59" (108.223219)	LONGITUDE = 108°13'32.73" (108.225758)
NAD 27 (BOTTOM HOLE LOCATION)	NAD 27 (TARGET LOCATION)	NAD 27 (SURFACE LOCATION)
LATITUDE = 39°27'36.23" (39.460064)	LATITUDE = 39°27'37.78" (39.460494)	LATITUDE = 39°27'59.86" (39.466628)
LONGITUDE = 108°13'20.60" (108.222389)	LONGITUDE = 108°13'21.29" (108.222581)	LONGITUDE = 108°13'30.43" (108.225119)

SCALE 1" = 1000'	DATE SURVEYED: 7-16-07	DATE DRAWN: 8-1-07
------------------	------------------------	--------------------

PARTY B.J. D.D. K.G.	REFERENCES G.L.O. PLAT
WEATHER WARM	FILE OXY USA WTP LP.