

WELL LOCATION CERTIFICATE

SHEET 1 OF 2

THIS MAP IS A GIS EXHIBIT AND DOES NOT REPRESENT A BOUNDARY SURVEY.

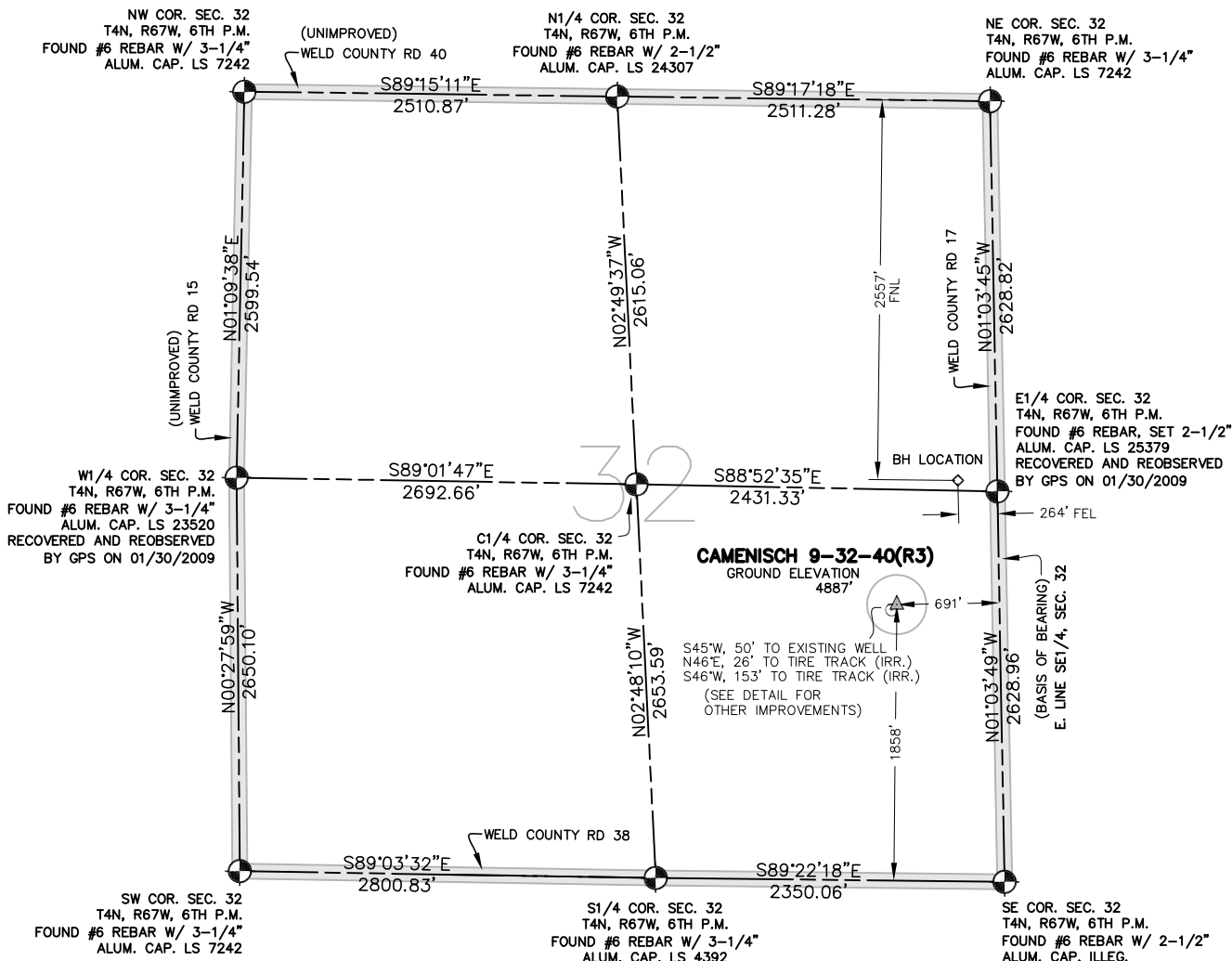


EXHIBIT MAP



WELL LOCATION CERTIFICATE

IN ACCORDANCE WITH A REQUEST FROM SHERRY GLASS OF KP KAUFFMAN INC., CIVIL ARTS-DREXEL GROUP, INC. HAS DETERMINED THE LOCATION OF CAMENISCH 9-32-40R WELL SITE TO BE 691' FEL AND 1858' FSL AS MEASURED AT NINETY (90) DEGREES FROM THE SECTION LINES OF SECTION 32, T4N, R67W, OF THE 6TH P.M., WELD COUNTY, CO.

LEGEND

- = FOUND SURVEY MONUMENT
- = ROAD
- (C) = CALCULATED DIMENSION
- ▲ = PROPOSED WELL LOCATION
- ◇ = BOTTOM OF HOLE LOCATION
- = OTHER PROPOSED WELL LOCATION
- = EXISTING WELL LOCATION

NOTES

1. BEARINGS SHOWN ON THIS MAP ARE BASED UPON GPS OBSERVATIONS MADE ON 01/25/2007 AND 01/30/2009 BY KIPPER GOLDSBERRY BETWEEN THE SOUTHEAST CORNER AND THE E1/4 CORNER OF SECTION 32, T4N, R67W, OF THE 6TH P.M., HAVING A BEARING OF N01°03'49"W, AS MONUMENTED AND SHOWN HEREON.
2. ELEVATIONS ARE BASED UPON NAVD 88 DATUM.
3. THE LOCATION FALLS IN AN AGRICULTURAL FIELD.
4. REFER TO ATTACHED WELL LOCATION DETAIL FOR IMPROVEMENTS WITHIN 200 FEET OF THE LOCATION. (SHEET 2 OF 2)

I HEREBY CERTIFY THAT THIS WELL LOCATION CERTIFICATE WAS PREPARED UNDER MY RESPONSIBLE CHARGE ON 04/12/2010 FOR AND ON BEHALF OF KP KAUFFMAN, INC. THAT IT IS NOT A LAND SURVEY PLAT OR AN IMPROVEMENT SURVEY PLAT, AND THAT IT IS NOT TO BE RELIED UPON FOR ESTABLISHMENT OF FENCE, BUILDING OR OTHER FUTURE IMPROVEMENT LINES.

PETER D. STEGER
COLORADO REGISTERED PROFESSIONAL
LAND SURVEYOR NO. 25379

DATE: APRIL 12, 2010

PROPOSED SURFACE HOLE DATA

(NAD 83)
LATITUDE: 40.26744 N
LONGITUDE: 104.90742 W
PDOP: <6

NOTICE

ACCORDING TO COLORADO LAW YOU MUST COMMENCE ANY LEGAL ACTION BASED UPON ANY DEFECT IN THIS SURVEY WITHIN THREE YEARS AFTER YOU FIRST DISCOVERED SUCH DEFECT. IN NO EVENT MAY ANY ACTION BASED UPON ANY DEFECT IN THIS SURVEY BE COMMENCED MORE THAN TEN YEARS FROM THE DATE OF THE CERTIFICATION SHOWN HEREON.

Z:\597-0\Ldd-597-0\Dwg\597-0-OG\CAMENISCH 9-32-40R3\CAMENISCH 9-32-40R3.DWG



ENGINEERING :: 1860 Lefthand Circle, Suite A
PLANNING Longmont, CO 80501
SURVEYING :: P 303.682.1131
F 303.682.1149

WELL LOCATION CERTIFICATE

THIS MAP IS A GIS EXHIBIT AND DOES NOT REPRESENT A BOUNDARY SURVEY.

SHEET 2 OF 2
DETAIL

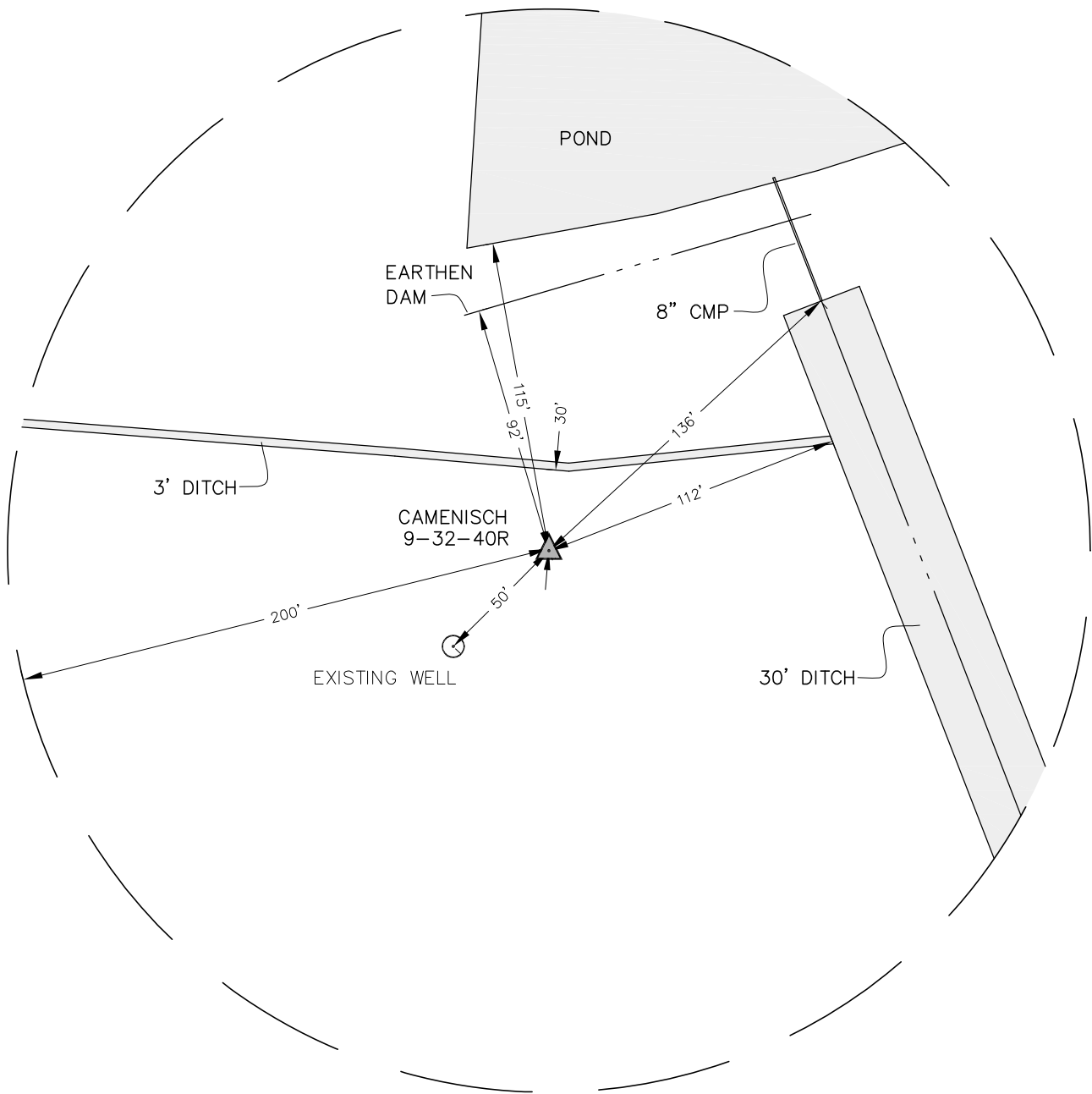


EXHIBIT MAP



LEGEND

△ = PROPOSED WELL LOCATION

⊙ = EXISTING WELL LOCATION



CIVILARTS

ENGINEERING PLANNING SURVEYING :: 1860 Lefthand Circle, Suite A
Longmont, CO 80501
:: P 303.682.1131
F 303.682.1149