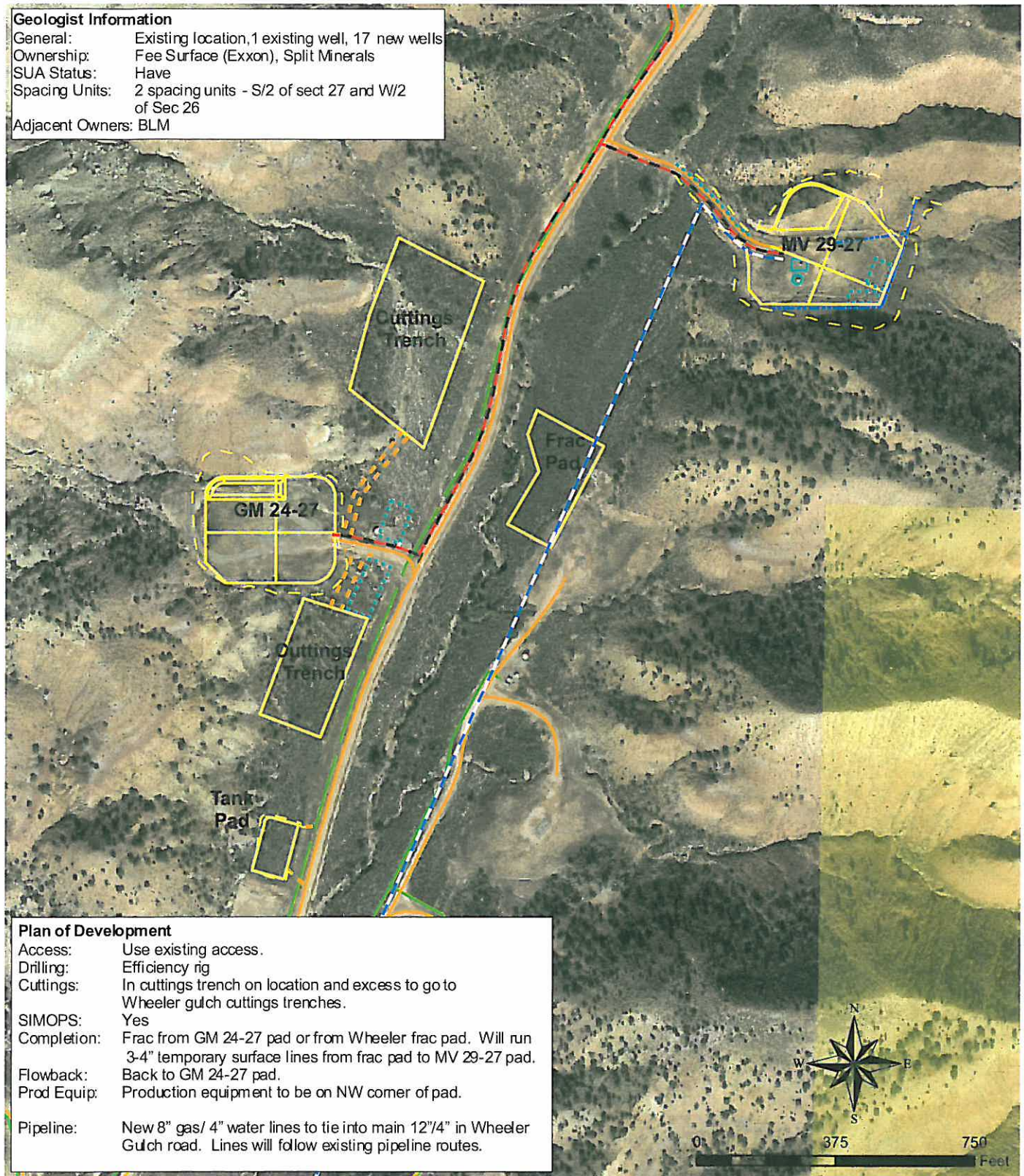


Geologist Information

General: Existing location, 1 existing well, 17 new wells
Ownership: Fee Surface (Exxon), Split Minerals
SUA Status: Have
Spacing Units: 2 spacing units - S/2 of sect 27 and W/2 of Sec 26
Adjacent Owners: BLM



Plan of Development

Access: Use existing access.
Drilling: Efficiency rig
Cuttings: In cuttings trench on location and excess to go to Wheeler gulch cuttings trenches.
SIMOPS: Yes
Completion: Frac from GM 24-27 pad or from Wheeler frac pad. Will run 3-4" temporary surface lines from frac pad to MV 29-27 pad.
Flowback: Back to GM 24-27 pad.
Prod Equip: Production equipment to be on NW corner of pad.
Pipeline: New 8" gas/ 4" water lines to tie into main 12" 4" in Wheeler Gulch road. Lines will follow existing pipeline routes.

Legend

- | | |
|-----------------------------------|------------------------------------|
| BLM Surface | Proposed Production Equipment Area |
| Frac Line | Existing Production Equipment |
| Frac Water Supply Line (Proposed) | Proposed Daylight Line |
| Existing Road | Proposed Pad or Pit |
| Pipeline (Valley) | Drainage |

Williams Production RMT

MV 29-27 Plan of Development
T6S R96W, Section 27



Date Prepared: April 30, 2010