

Antero Resources

Valley Farms D-2
Garfield County, CO



Horizontal Plan
1" = 200'

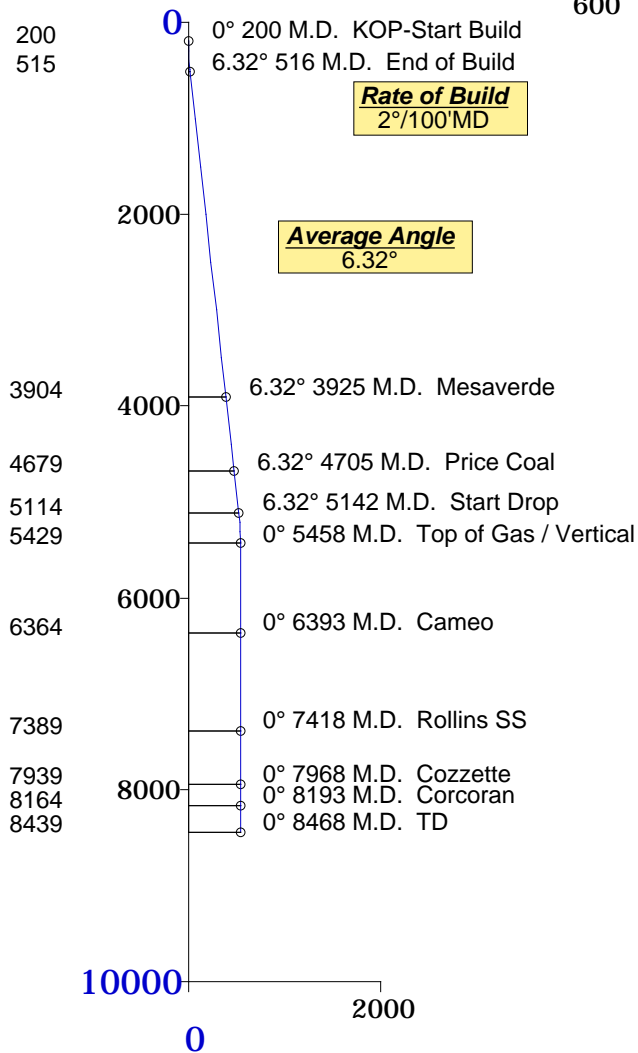


Proposed Target
544.27' Displacement from S/L
@ 275.01° Azimuth from S/L
North-47.56' West-542.19' of S/L
TVD-5429' MD-5458'
Y=1625583.8', X=2392167.0'

Target Area
25' Radius

Vertical Section
1" = 2000'

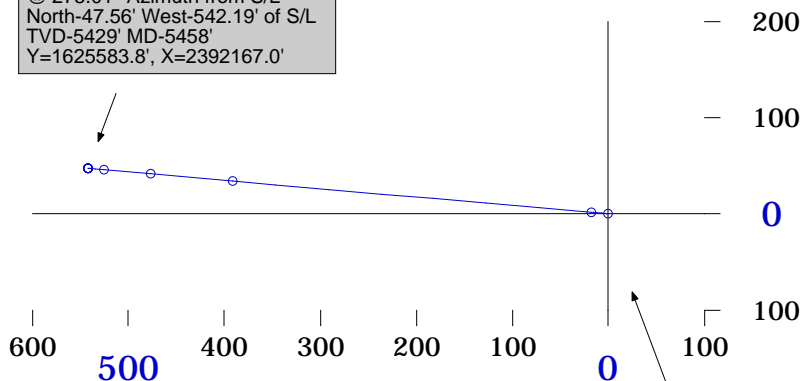
Plane of Proposal
275.01° Azimuth



Rate of Build
2°/100'MD

Average Angle
6.32°

Rate of Drop
2°/100'MD



Surface Location
Y=1625536.24'
X=2392709.17'
NAD 83

Formation	TVD
Mesaverde	3904
Price Coal	4679
Top Gas	5429
Cameo	6364
Rollins SS	7389
Cozzette	7939
Corcoran	8164
TD	8439



[illegible]



Minimum of Curvature
Slot Location: 162536.24', 2392709.17'
Plane of Vertical Section: 275.01°

Measured Depth Feet	BORE Inc Degrees	HOLE Direction Degrees	True Vertical Depth Feet	RECTANGULAR COORDINATES		LAMBERT COORDINATES		Vertical Section Feet	CLOSURES		Dogleg Severity Deg/100'
				North(-South)	East(-West)	Y Feet	X Feet		Distance Feet	Direction Deg	
				Feet	Feet						
7968.41	0.00	275.01	7939.00	47.56	-542.19	1625583.8	2392167.0	544.27	544.27	275.01	0.00
Cozzette											
8193.41	0.00	275.01	8164.00	47.56	-542.19	1625583.8	2392167.0	544.27	544.27	275.01	0.00
Corcoran											
8468.41	0.00	275.01	8439.00	47.56	-542.19	1625583.8	2392167.0	544.27	544.27	275.01	0.00
TD											
Final Station Closure Distance: 544.27' Direction: 275.01°											