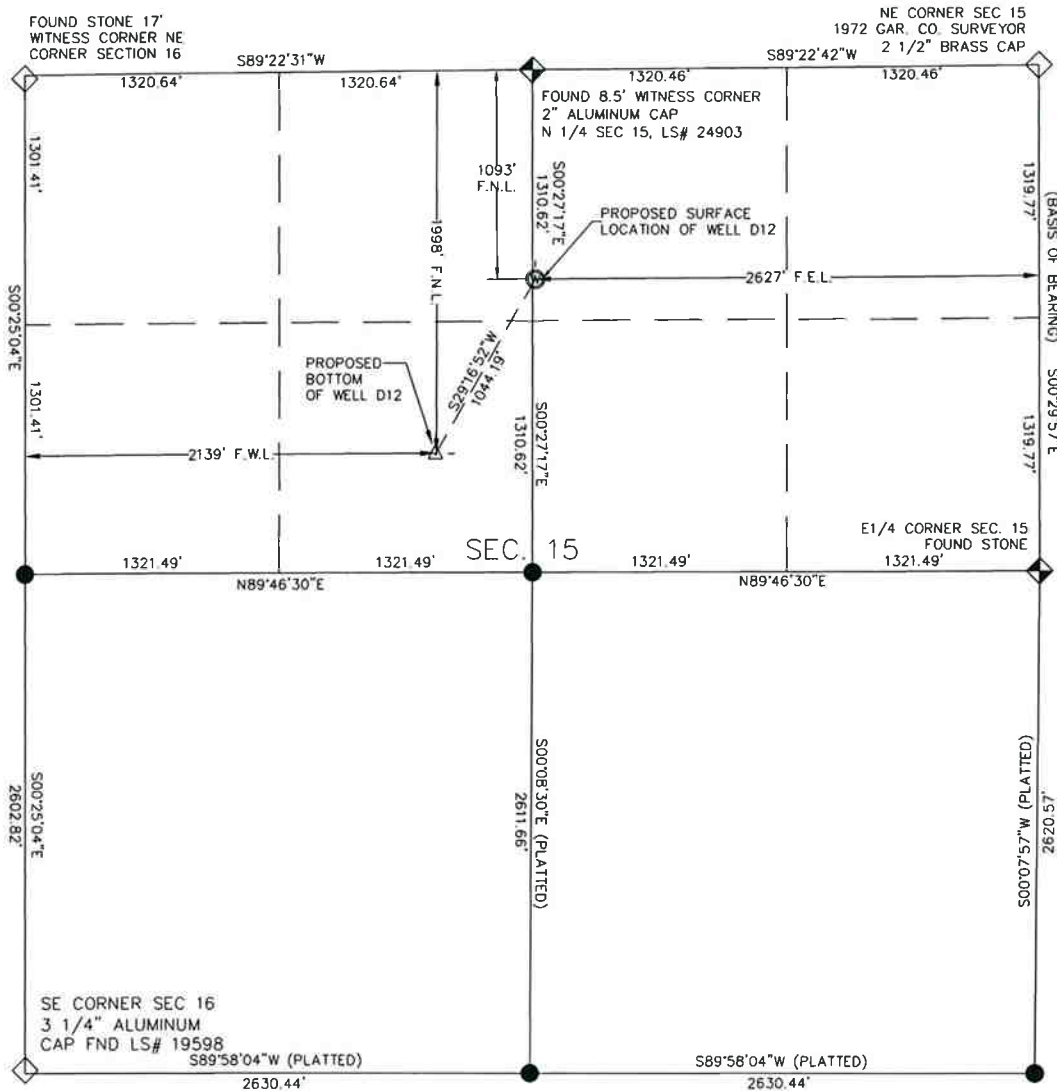


SECTION 15, T. 6 S., R. 92 W., 6TH P.M.



**VALLEY FARMS PAD D
GARFIELD COUNTY,
COLORADO**

WELL D12

NAD 83

LATITUDE

39°31'52.08083" N
(39.531133563889 N)

LONGITUDE

107°39'11.22862" W
(107.65311906111 W)

**PROPOSED
BOTTOM HOLE
LOCATION**

NAD 83

LATITUDE

39°31'43.390772" N
(39.528719659 N)

LONGITUDE

107°39'17.691174" W
(107.654914215 W)

LEGEND

- ⊙ FIELD SURVEYED WELL LOCATION
- ◇ FIELD SURVEYED SECTION CORNER
- ◆ FIELD SURVEYED QUARTER CORNER
- CALCULATED SECTION CORNER LOCATION
- △ PROPOSED BOTTOM OF WELL LOCATION

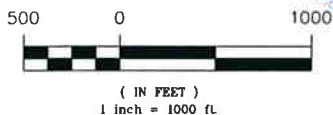
SURVEYOR'S STATEMENT

I, FRANK W. HARRINGTON, DO HEREBY STATE THAT THIS SURVEY WAS PREPARED BY HIGH COUNTRY ENGINEERING, INC. FOR ANTERO RESOURCES, THAT SAID SURVEY WAS PREPARED BY ME OR UNDER MY SUPERVISION AND RESPONSIBLE CHARGE AND THAT IT IS TRUE AND CORRECT TO THE BEST OF MY BELIEF AND KNOWLEDGE.

BY 
FRANK W. HARRINGTON, L.S. NO. 19598



GRAPHIC SCALE



NOTES:

- 1) ELEVATION BASED ON NAVD 1988.
- 2) LATITUDES AND LONGITUDES ARE BASED ON NAD 83 NGS POINTS "ANDERS M", "TAMBURELLO" AND "WDP 5".
- 3) WELL MEASURED 90° FROM SECTION LINES.
- 4) SURFACE USE: IRRIGATED RANGELAND
- 5) EXISTING GROUND ELEVATION: 5532.7'
- 6) PROPOSED PAD ELEVATION: 5524.7'
- 7) DATE OF SURVEY: OCTOBER 15, 2008
- 8) DATE OF DRAFTING: NOVEMBER 12, 2008
- 9) DISTANCE TO NEAREST PUBLIC ROAD: 362' (MINNESOTA ESTATES ROAD)
- 10) BASIS OF BEARINGS WERE DETERMINED BY GPS OBSERVATION YIELDING A BEARING OF S00°29'57"E BETWEEN THE NORTHEAST CORNER OF SECTION 15 BEING A 2 1/2" BRASS CAP, GAR. CO. SURVEYOR, 1972, FOUND IN PLACE, AND THE EAST QUARTER CORNER OF SECTION 15 BEING A MARKER STONE, FOUND IN PLACE. (AS SHOWN ABOVE)
- 11) PDOP = 1.1

HIGH COUNTRY ENGINEERING, INC.



1517 BLAKE AVENUE, STE 101
GLENWOOD SPRINGS, CO 81601
PHONE (970) 945-8676 • FAX (970) 945-2555
WWW.HCENG.COM

DRAWN BY: RPK	SCALE: 1" = 1000'
CHECKED BY: FWH	PROJECT NO: 2051034
DATE: 05/10/10	PAGE: 2 OF 10
FILE: PAD D PACKET WELL D12	

**WELL LOCATION PLAT
PREPARED FOR:**



**ANTERO
RESOURCES**

NE 1/4 NW 1/4 OF SECTION 15
T. 6 S., R. 92 W. OF THE 6TH P.M.
GARFIELD COUNTY, COLORADO