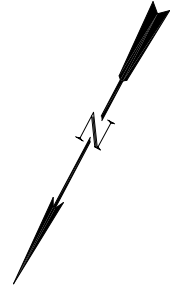
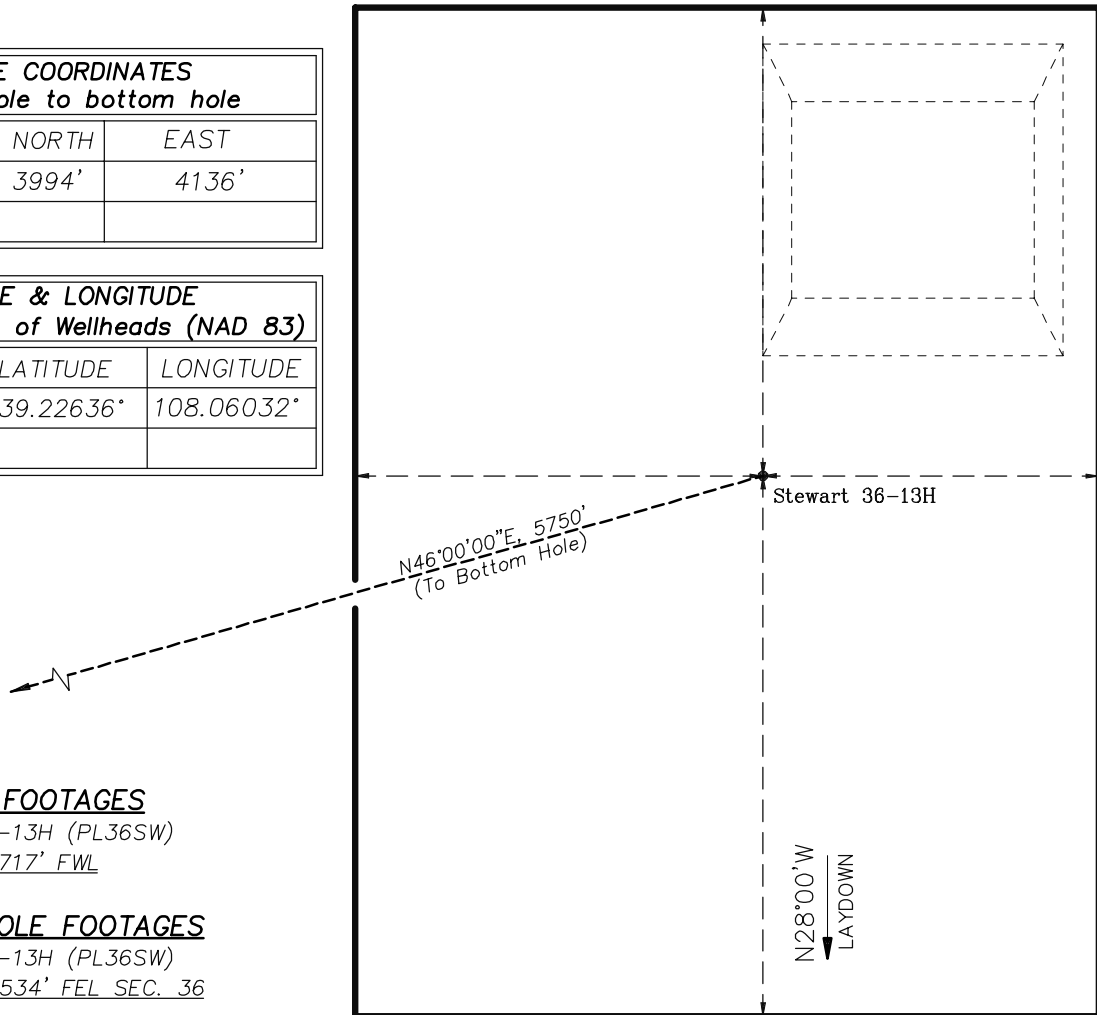


EnCana Oil & Gas (USA) Inc.
Well Pad (PL36SW)
Section 36, T9S, R96W, 6th P.M.
WELL PAD INTERFERENCE PLAT



RELATIVE COORDINATES From top hole to bottom hole		
WELL	NORTH	EAST
36-13H	3994'	4136'

LATITUDE & LONGITUDE Surface position of Wellheads (NAD 83)		
WELL	LATITUDE	LONGITUDE
36-13H	39.22636°	108.06032°



TOP HOLE FOOTAGES

STEWART 36-13H (PL36SW)
662' FSL & 717' FWL

BOTTOM HOLE FOOTAGES

STEWART 36-13H (PL36SW)
658' FNL & 534' FEL SEC. 36



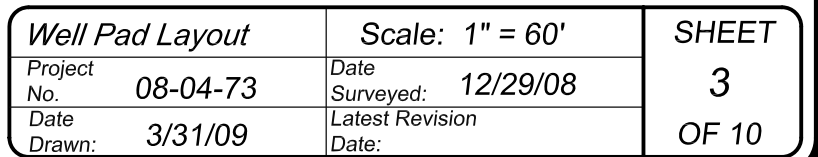
(SCALE IN FEET)



906 Main Street
Evanston, Wyoming 82930
Phone No. (307) 789-4545

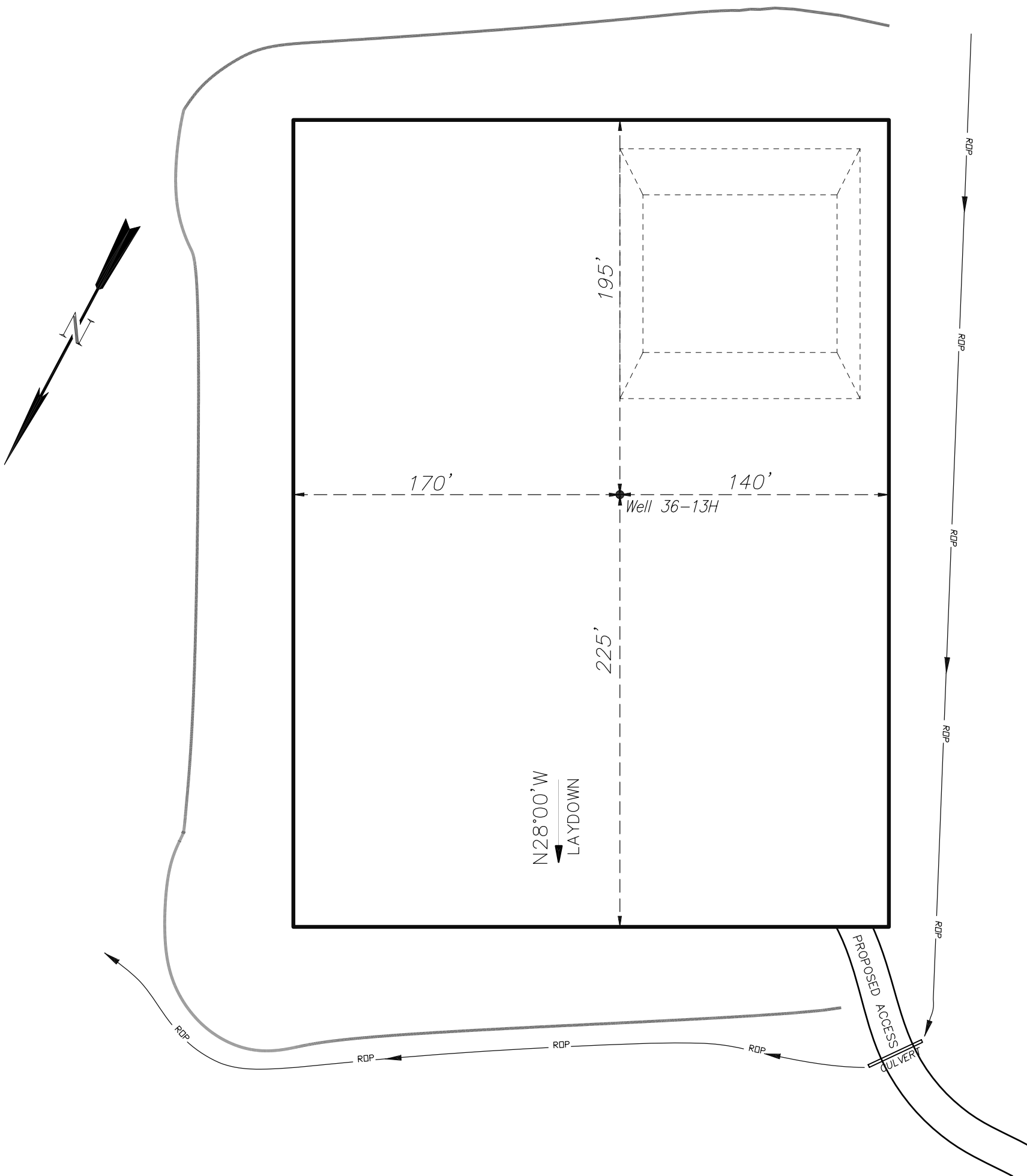
Interference Plat		Scale: 1" = 80'	SHEET 2 OF 10
Project No.	08-04-73	Date Surveyed: 12/29/08	
Date Drawn: 3/31/09		Latest Revision Date:	

SW1/4 SW1/4, SECTION 36, T 9 S, R 96 W, 6th P.M.
WELL PAD LAYOUT



EnCana Oil & Gas (USA) Inc.
PL36SW Well Pad

SW1/4 SW1/4, SECTION 36, T 9 S, R 96 W, 6th P.M.
PRE-CONSTRUCTION PLAT



Total Surface Disturbance = 5.14 Acres
(See Sheet 4 for Details)

- NOTES:
- (1) Slope Track and/or Terrace all Slopes and Piles
 - (2) Erosion Control & Seed Topsoil
 - (3) Erosion Control & Seed Outside
 - (4) Slope away from Substructure Areas 1% to 3% to Flow Control

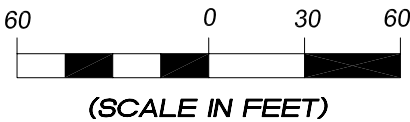
- LEGEND
- PARI = PAD/ACCESS ROAD INTERFACE
 - SR = SEDIMENT RESERVOIR
 - ST = SEDIMENT TRAP
 - R.O.P.= RUN-ON PROTECTION
 - = PERIMETER CONTROL (WATTLES)
 - CSD = CUT SLOPE DIVERSION (BERM TOE OF CUT SLOPE)
 - D = FILL DIVERSION TO SEDIMENT TRAP
 - VGB = VEGETATION BUFFER (UNDISTURBED LAND INSIDE PC)
 - CDM = CHECK DAM
 - FCD = FLOW CONTROL DITCH
 - S = SLASH
 - ▨ = LEVEL SPREADER
 - = TOE BERM (PLACED AT TOE OF ALL FILL SLOPES/STOCKPILES)

PRE-CONSTRUCTION PHASE COMPLETE,
AUTHORIZATION TO CONTINUE
CONSTRUCTION.

SIGNATURE: _____



906 Main Street
Evanston, Wyoming 82930
Phone No. (307) 789-4545

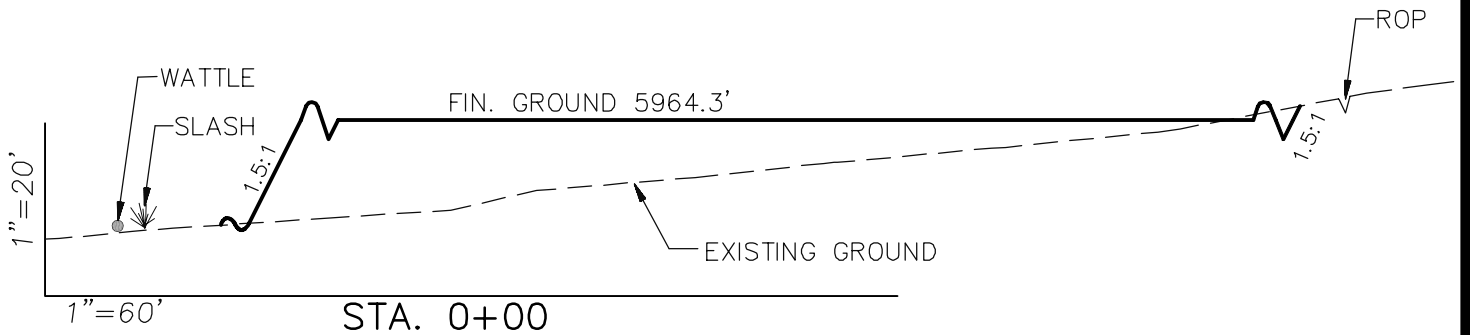
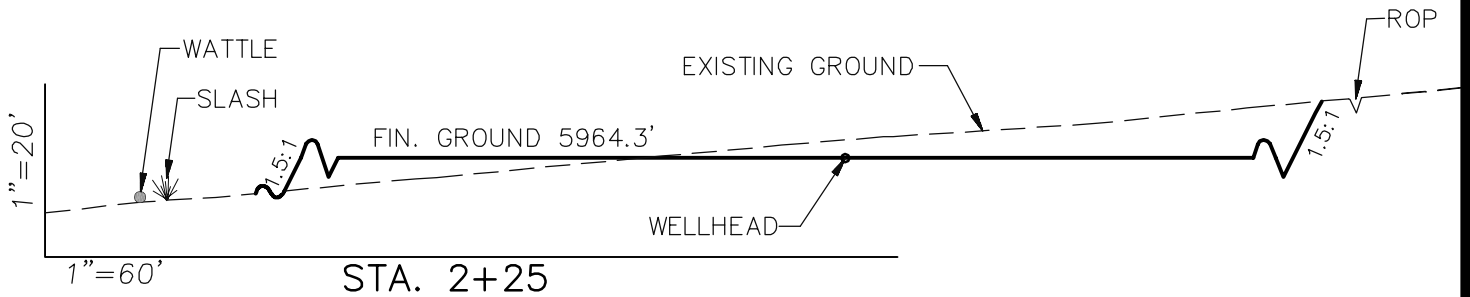
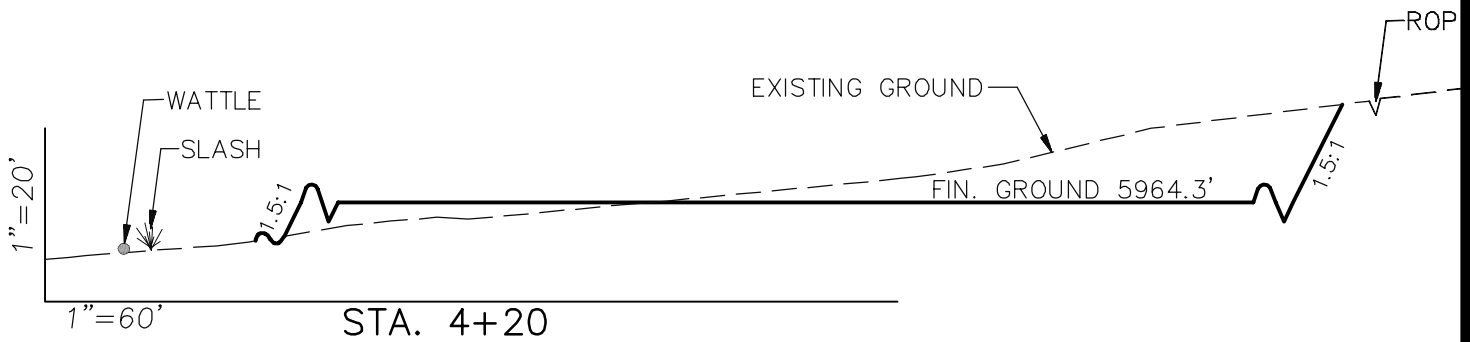


Pre-Construction		Scale: 1" = 60'	SHEET 3a OF 10
Project No.	08-04-73	Date Surveyed: 12/29/08	
Date Drawn:	3/31/09	Latest Revision Date:	

EnCana Oil & Gas (USA) Inc.

Well Pad (PL36SW)

CROSS SECTIONS



SURFACE DISTURBANCE (IN ACRES)

Well Pad	3.0
Side Slopes	0.2
Topsoil & Waste Material	1.94
TOTAL	5.14

NOTE:
ALL CUT AND FILL
SLOPES ARE AT 1.5:1
UNLESS OTHERWISE
NOTED.

EARTHWORK QUANTITIES

(in Cubic Yards w/ 0% shrink/swell)

ITEM	CUT	FILL	6" TOPSOIL	EXCESS
PAD	7514	6922	Topsoil not included in Excavation	592
PIT	0	0		0
TOTALS	7514	6922	2602	592

Cross Sections

Project No. 08-04-73
Date Drawn: 3/31/09

Scale: As Shown

Date Surveyed: 12/29/08
Latest Revision
Date:

SHEET

4
OF 10

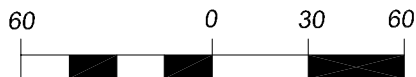
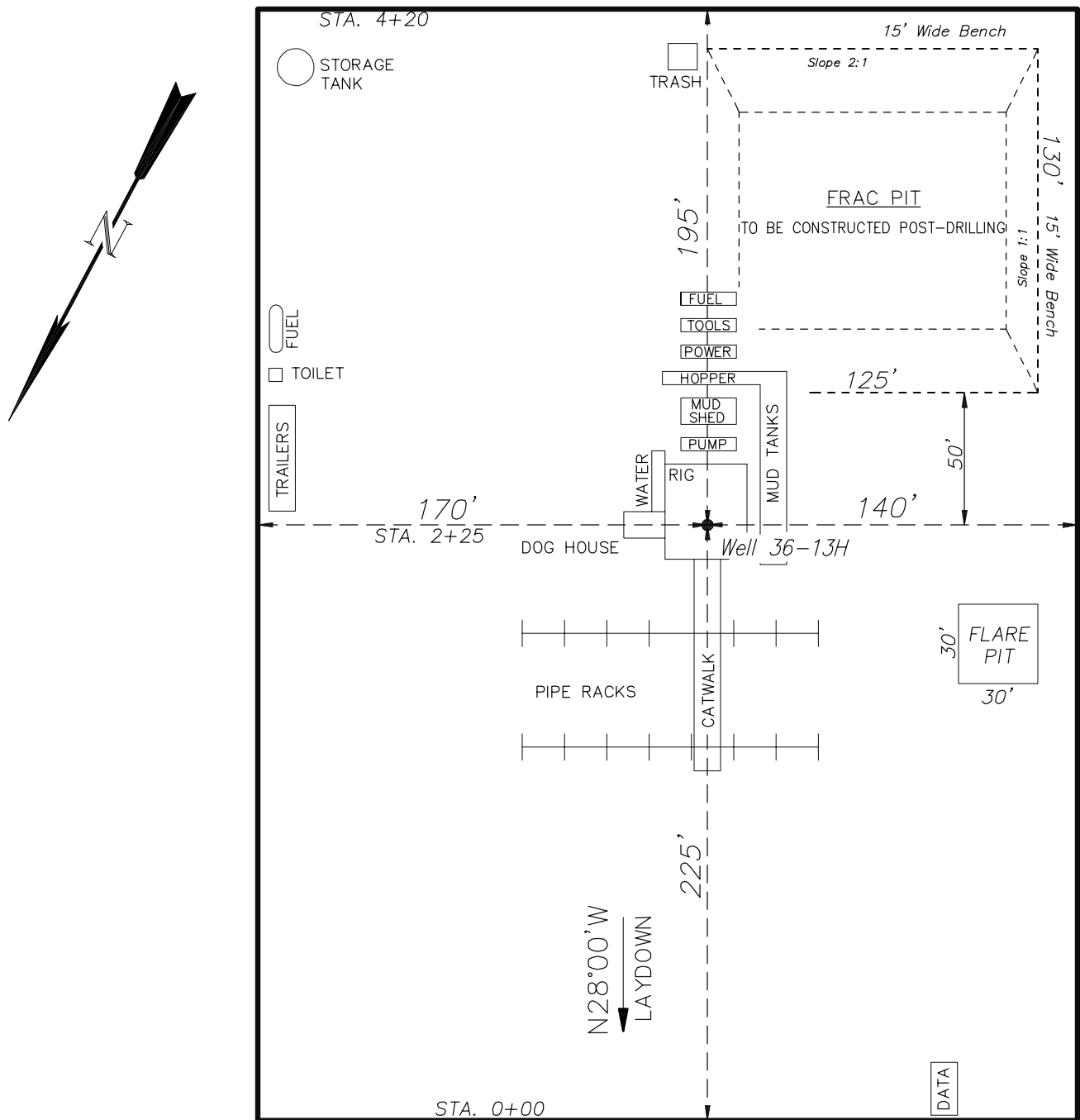


906 Main Street
Evanston, Wyoming 82930
Phone No. (307) 789-4545

EnCana Oil & Gas (USA) Inc.

Well Pad (PL36SW)

TYPICAL RIG LAYOUT



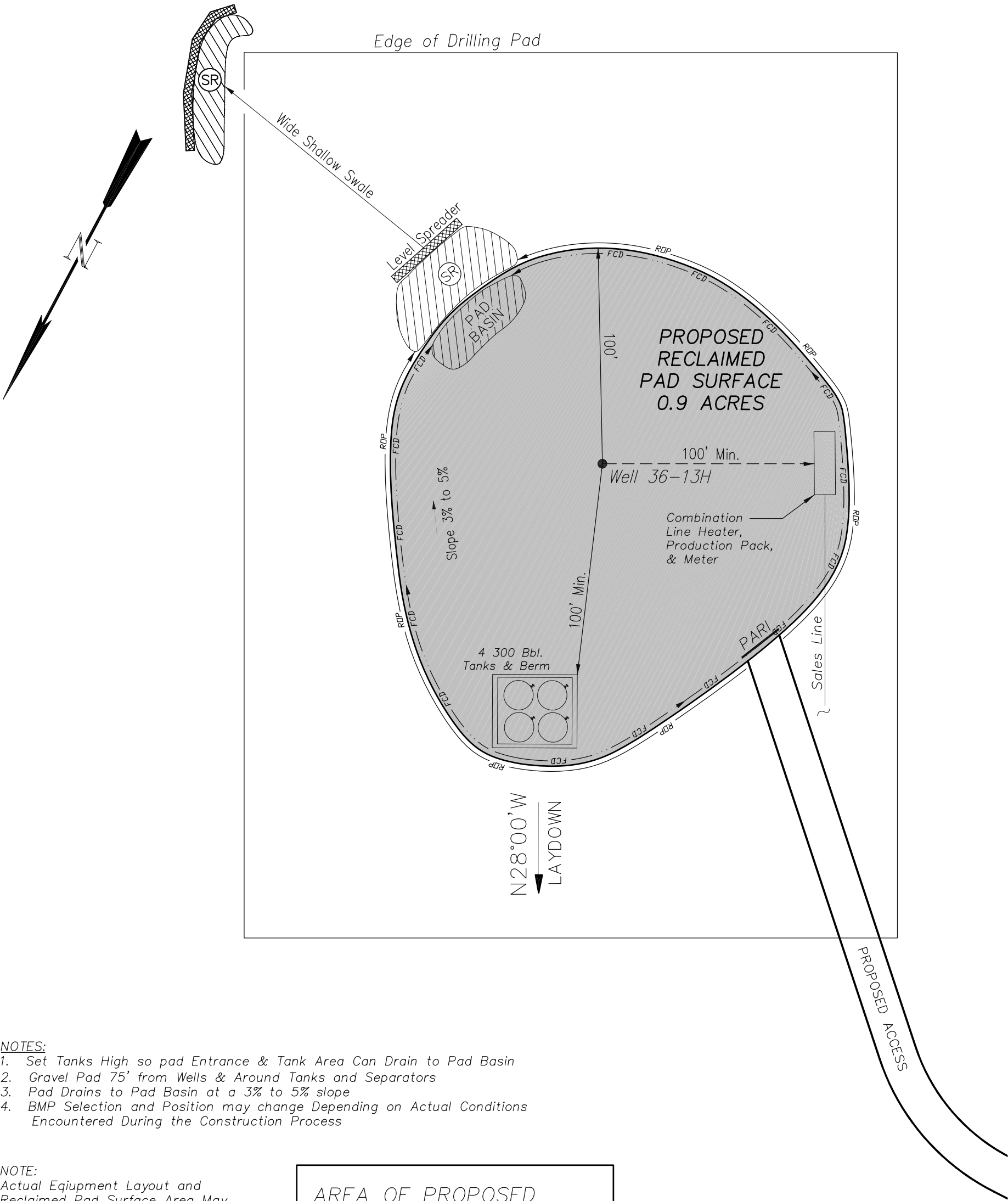
(SCALE IN FEET)



906 Main Street
Evanston, Wyoming 82930
Phone No. (307) 789-4545

Rig Layout		Scale: 1" = 60'	SHEET 5 OF 10
Project No.	08-04-73	Date Surveyed: 12/29/08	
Date Drawn:	3/31/09	Latest Revision Date:	

EnCana Oil & Gas (USA) Inc.
PL36SW Well Pad
PRODUCTION SCHEMATIC



- NOTES:
1. Set Tanks High so pad Entrance & Tank Area Can Drain to Pad Basin
 2. Gravel Pad 75' from Wells & Around Tanks and Separators
 3. Pad Drains to Pad Basin at a 3% to 5% slope
 4. BMP Selection and Position may change Depending on Actual Conditions Encountered During the Construction Process

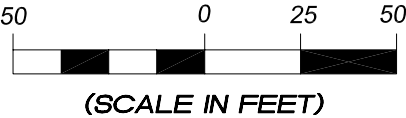
NOTE:
Actual Equipment Layout and Reclaimed Pad Surface Area May Change due to Production Requirements or Site Conditions.

AREA OF PROPOSED
RECLAIMED PAD SURFACE
= 0.9 ACRES

- LEGEND
- PARI = PAD/ACCESS ROAD INTERFACE
 - SR = SEDIMENT RESERVOIR
 - ST = SEDIMENT TRAP
 - R.O.P. = RUN-ON PROTECTION
 - = PERIMETER CONTROL (WATTLES)
 - CSD = CUT SLOPE DIVERSION (BERM TOE OF CUT SLOPE)
 - D = FILL DIVERSION TO SEDIMENT TRAP
 - VGB = VEGETATION BUFFER (UNDISTURBED LAND INSIDE PC)
 - CDM = CHECK DAM
 - FCD = FLOW CONTROL DITCH
 - S = SLASH
 - ▨ = LEVEL SPREADER
 - = TOE BERM (PLACED AT TOE OF ALL FILL SLOPES/STOCKPILES)

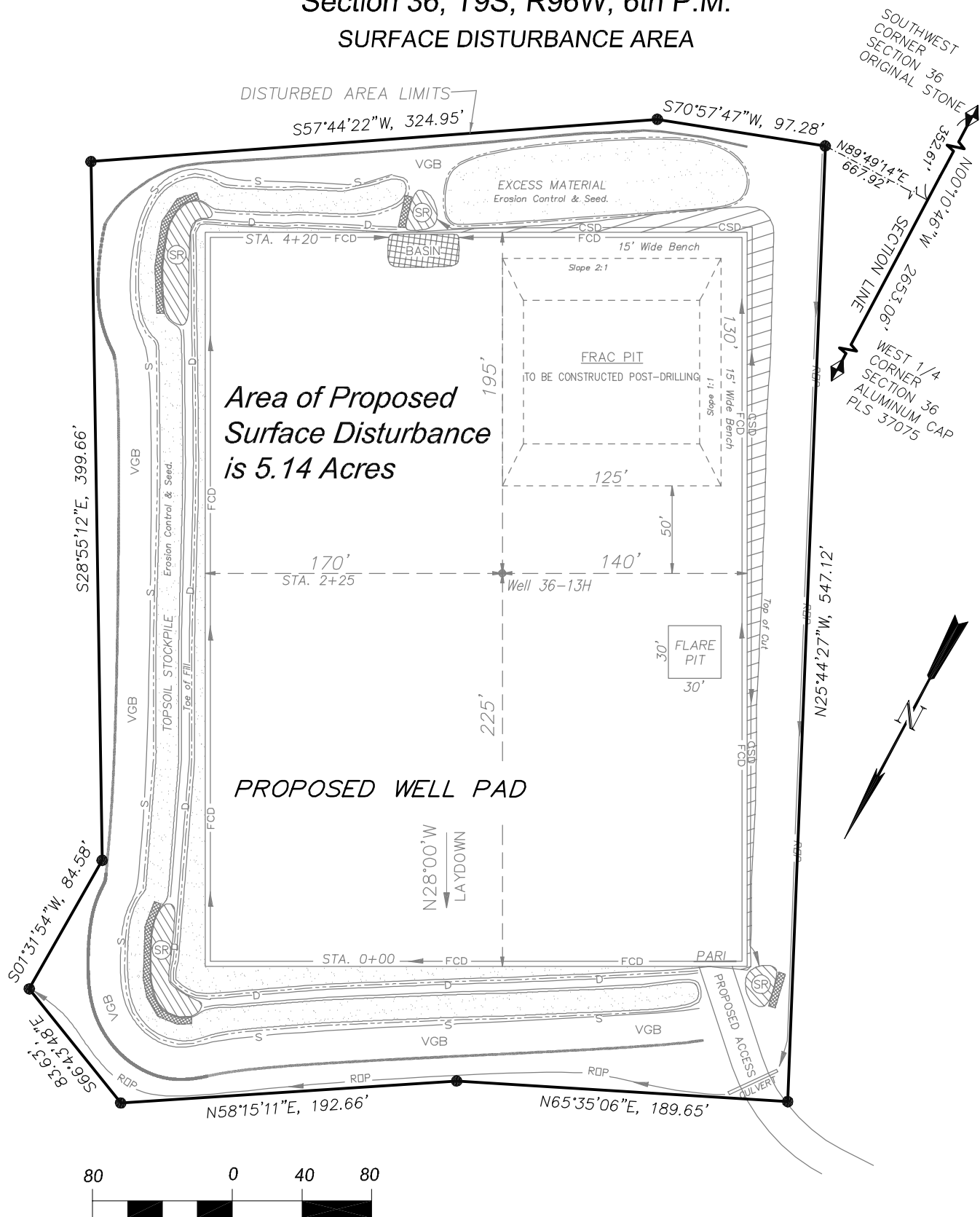


906 Main Street
Evanston, Wyoming 82930
Phone No. (307) 789-4545



Production Schematic		Scale: 1" = 50'	SHEET 6 OF 10
Project No.	08-04-73	Date Surveyed: 12/29/08	
Date Drawn:	3/31/09	Latest Revision Date:	

EnCana Oil & Gas (USA) Inc.
Well Pad (PL36SW)
Section 36, T9S, R96W, 6th P.M.
SURFACE DISTURBANCE AREA



(SCALE IN FEET)



906 Main Street
Evanston, Wyoming 82930
Phone No. (307) 789-4545

<i>Surface Disturbance</i>		Scale: 1" = 80'	SHEET 7 OF 10
Project No.	08-04-73	Date Surveyed: 12/29/08	
Date Drawn:	3/31/09	Latest Revision Date:	