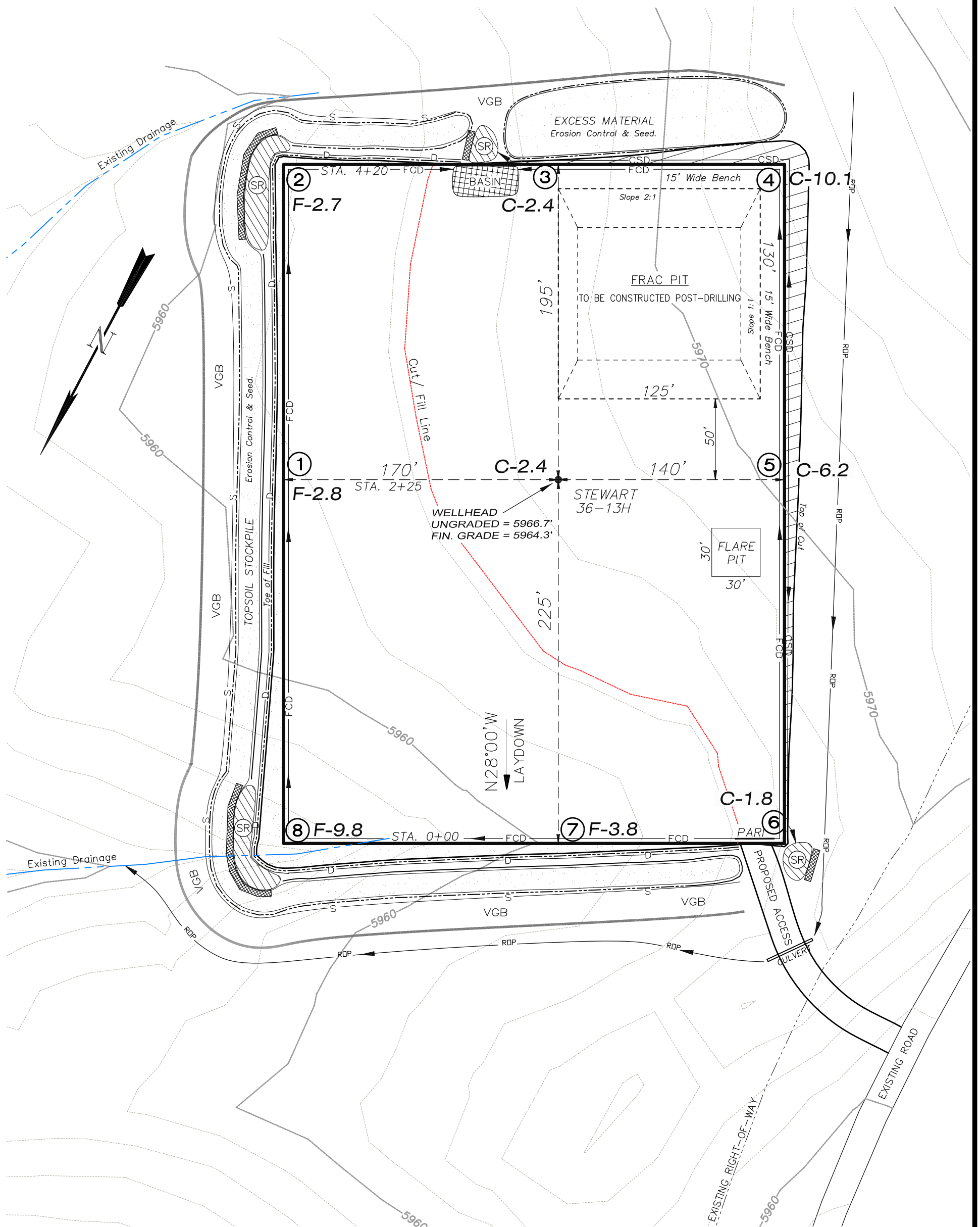


EnCana Oil & Gas (USA) Inc.
PL36SW Well Pad

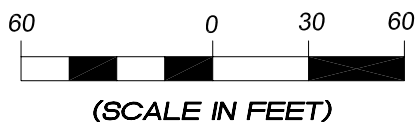
SW1/4 SW1/4, SECTION 36, T 9 S, R 96 W, 6th P.M.
WELL PAD LAYOUT



Total Surface Disturbance = 5.14 Acres
(See Sheet 4 for Details)

- NOTES:
- (1) Slope Track and/or Terrace all Slopes and Piles
 - (2) Erosion Control & Seed Topsoil
 - (3) Erosion Control & Seed Outside
 - (4) Slope away from Substructure Areas 1% to 3% to Flow Control

LEGEND:
PARI = PAD/ACCESS ROAD INTERFACE
SR = SEDIMENT RESERVOIR
ST = SEDIMENT TRAP
R.O.P. = RUN-ON PROTECTION
= PERIMETER CONTROL (WATTLES)
CSD = CUT SLOPE DIVERSION (BERM TOE OF CUT SLOPE)
D = FILL DIVERSION TO SEDIMENT TRAP
VGB = VEGETATION BUFFER (UNDISTURBED LAND INSIDE PC)
CDM = CHECK DAM
FCD = FLOW CONTROL DITCH
S = SLASH
= LEVEL SPREADER
= TOE BERM (PLACED AT TOE OF ALL FILL SLOPES/STOCKPILES)



906 Main Street
Evanston, Wyoming 82930
Phone No. (307) 789-4545

Well Pad Layout		Scale: 1" = 60'	SHEET 3 OF 10
Project No.	08-04-73	Date Surveyed: 12/29/08	
Date Drawn: 3/31/09		Latest Revision Date:	