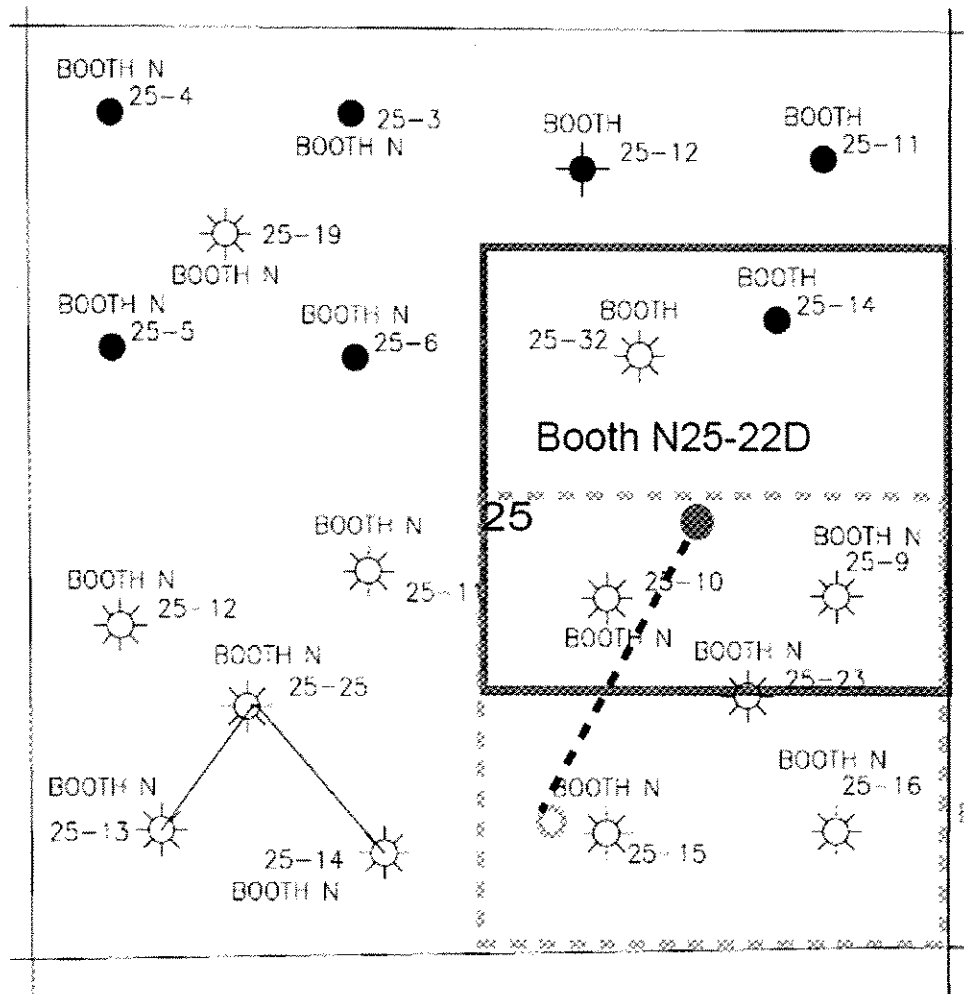


**Booth N25-22D**  
**NWSE, Section 25, T5N, R67W, 6<sup>th</sup> PM**



**LEGEND**



Proposed 160 acre Spacing Unit



Bottom Hole Located NWSE, Section 25, T5N, R67W, 6<sup>th</sup> PM

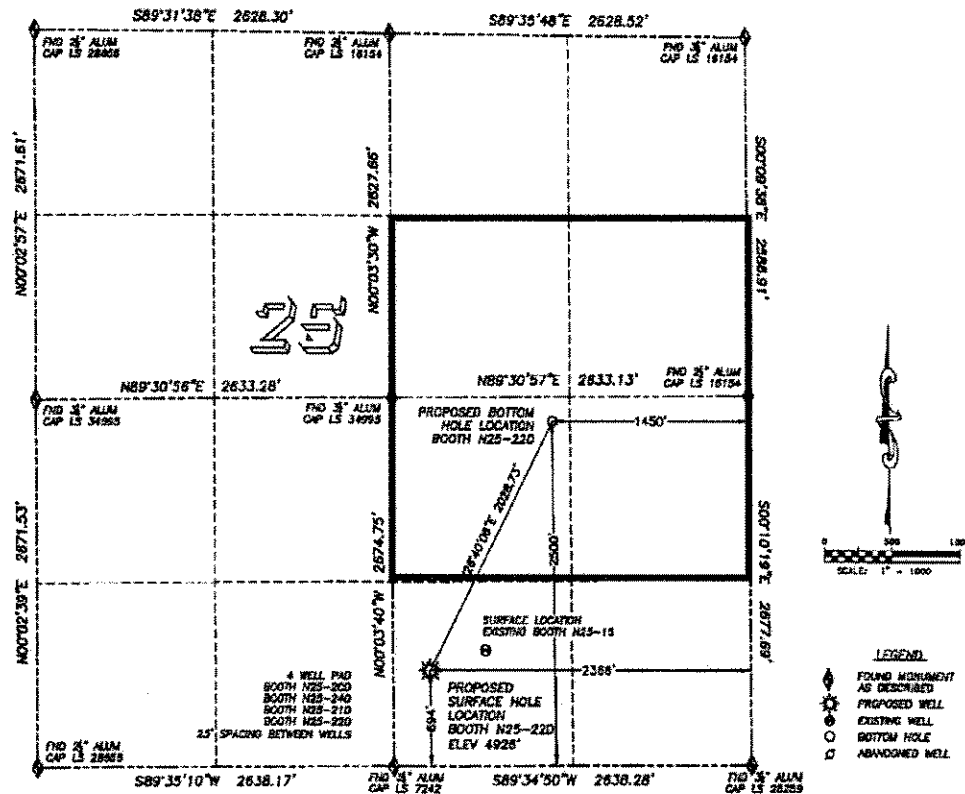
The governmental  $\frac{1}{4}$  Section has less than 8 bottom hole wells producing from the Codell, Niobrara, & J-Sand Formations.

# Proposed 318 Ae Spacing Unit

DALEY LAND SURVEYING, INC. PARKER, CO. 80134 303 953 9841

## WELL LOCATION CERTIFICATE BOOTH N25-22D

SECTION 25, TOWNSHIP 5 NORTH, RANGE 67 WEST OF THE 6TH PRINCIPAL MERIDIAN



### HAD 83 LATITUDE AND LONGITUDE

#### BOOTH N25-22D SURFACE HOLE:

LATITUDE: N40.36518°  
LONGITUDE: W104.84054°  
ELEVATION: 4928'

POOP 1.5

894' FSL, 2388' FEL

#### BOTTOM HOLE:

LATITUDE: N40.37016°  
LONGITUDE: W104.83727°  
2500' FSL, 1450' FEL

#### NEAREST EXISTING WELL:

BOOTH N25-18 SURFACE HOLE

LATITUDE: N40.36559°  
LONGITUDE: W104.83905°  
ELEVATION: 4922'

435' NORTHEAST

QUARTER/QUARTER: SW4/SE4

NEAREST APPARENT PROPERTY LINE:  
894'± SOUTH

IN ACCORDANCE WITH A REQUEST FROM BILL BETSON OF NOBLE ENERGY INC., DALEY LAND SURVEYING, INC. HAS DETERMINED THE SURFACE LOCATION OF THE BOOTH N25-22D WELL TO BE 894' FSL, 2388' FEL, AS MEASURED AT NINETY (90) DEGREES FROM THE SECTION LINES OF SECTION 25, TOWNSHIP 5 NORTH, RANGE 67 WEST OF THE 6TH PRINCIPAL MERIDIAN, WELD COUNTY COLORADO. THE BOTTOM HOLE LOCATION PROVIDED BY THE CLIENT IS TO BE 2500' FSL, 1450' FEL OF SECTION 25, T5N, R67W.

I HEREBY CERTIFY THAT THIS WELL LOCATION CERTIFICATE WAS PREPARED BY ME OR UNDER MY DIRECT SUPERVISION, THAT THE WORK WAS COMPLETED ON 12/17/2009 FOR AND ON BEHALF OF NOBLE ENERGY, INC., AND THAT THIS MAP DOES NOT REPRESENT A BOUNDARY SURVEY, IT IS NOT A LAND SURVEY, PLAT OR AN IMPROVEMENT SURVEY PLAT AND IT IS NOT TO BE RELIED UPON FOR THE ESTABLISHMENT OF FENCE, BUILDING OR OTHER FUTURE IMPROVEMENT LINES.

#### NOTES:

- 1) BASIS OF BEARING FOR THIS MAP IS ASSUMED AND BASED UPON GPS OBSERVATIONS MADE BETWEEN MONUMENTS LOCATED AT THE SOUTHEAST AND SOUTH QUARTER CORNERS OF SECTION 25, T5N, R67W, AND ALL BEARINGS SHOWN HEREON ARE RELATIVE THEREOF.
- 2) HORIZONTAL DATUM IS NAD83.
- 3) VERTICAL DATUM IS NAVD83. ELEVATIONS ARE DERIVED FROM GPS-RTK OBSERVATIONS PROCESSED THROUGH OPIUS, UTILIZING THE GEODIG3 MODEL.
- 4) SEE VISIBLE IMPROVEMENTS EXHIBIT FOR VISIBLE IMPROVEMENTS WITHIN 400' OF PROPOSED SURFACE HOLE LOCATION.
- 5) SURFACE USE: OPEN FIELD.

NOTE: According to Colorado law you MUST acknowledge any legal action based upon any defect in this W.L.C. within three years after your first observation shall be made, or no time limit if any action based upon any such defect in this W.L.C. by a governmental entity shall be made from the date of the construction of the herein.

FOR AND ON BEHALF OF:  
DALEY LAND SURVEYING, INC.  
Robert Daley, PLS 35597

