

S89°01'W - 5320.92' (G.L.O.)

WELL LOCATION, FEDERAL 32A-20-691 (MDP
PAD #13), LOCATED AS SHOWN IN THE NW
1/4 SE 1/4 OF SECTION 20, T6S, R91W, 6th
P.M. GARFIELD COUNTY, COLORADO.



1. Well footages are measured at right angles to the Section Lines.
2. Bearings are based on Global Positioning Satellite observations.
3. The Bottom of hole bears N85°19'39"W 2001.67' from the East 1/4 Corner.
4. G.P.S. Operator: D. Slauch, (PDOP) = 1.8

See addendum to legal plat (sheet 2i) for existing improvements within 400' of the proposed well head.

THIS IS TO CERTIFY THAT THE ABOVE PLAT WAS
PREPARED FROM FIELD NOTES OF A ~~LOCAL~~ SURVEY
MADE BY ME OR UNDER MY SUPERVISION. THE LOCATION
HAS BEEN STAKED ON THE GROUND AS SHOWN ON THE
PLAT, AND THAT THE SAME ARE TRUE AND CORRECT
TO THE BEST OF MY KNOWLEDGE AND BELIEF.

REGISTERED LAND SURVEYOR
REGISTRATION No. 330125
STATE OF COLORADO

180 NORTH VERNAL AVE. – VERNAL, UTAH 84078
(435) 781-2501

DATE SURVEYED:
01-05-10

SURVEYED BY: C.D.S.

SHEET

DATE DRAWN:
01-11-10

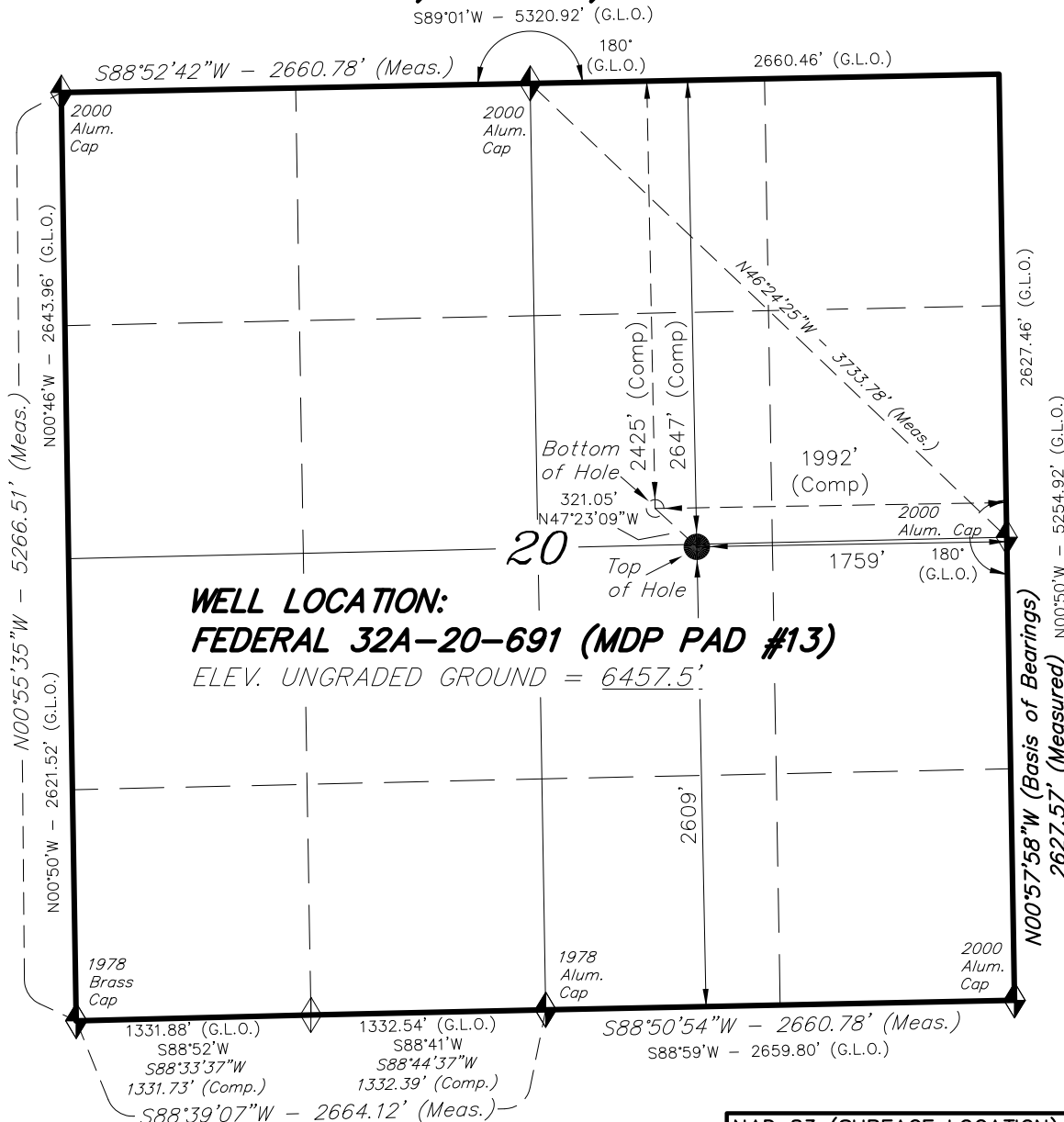
DRAWN BY: L.C.S.

2e

REVISÉ:

SCALE: 1" = 1000'

OF 12



 = SECTION CORNERS LOCATED

Basis of elevation is the Rifle 2 Triangulation Station. 39°31'53.80" N Lat. & 107°47'07.78" W Long. (NAD 83). Elevation = 5323.1' (NAVD88).

NAD 83 (SURFACE LOCATION)

$$\text{LATITUDE} = 39^{\circ}30'47.79''$$

LONGITUDE = 107°34'29.92"
 (107.574978)