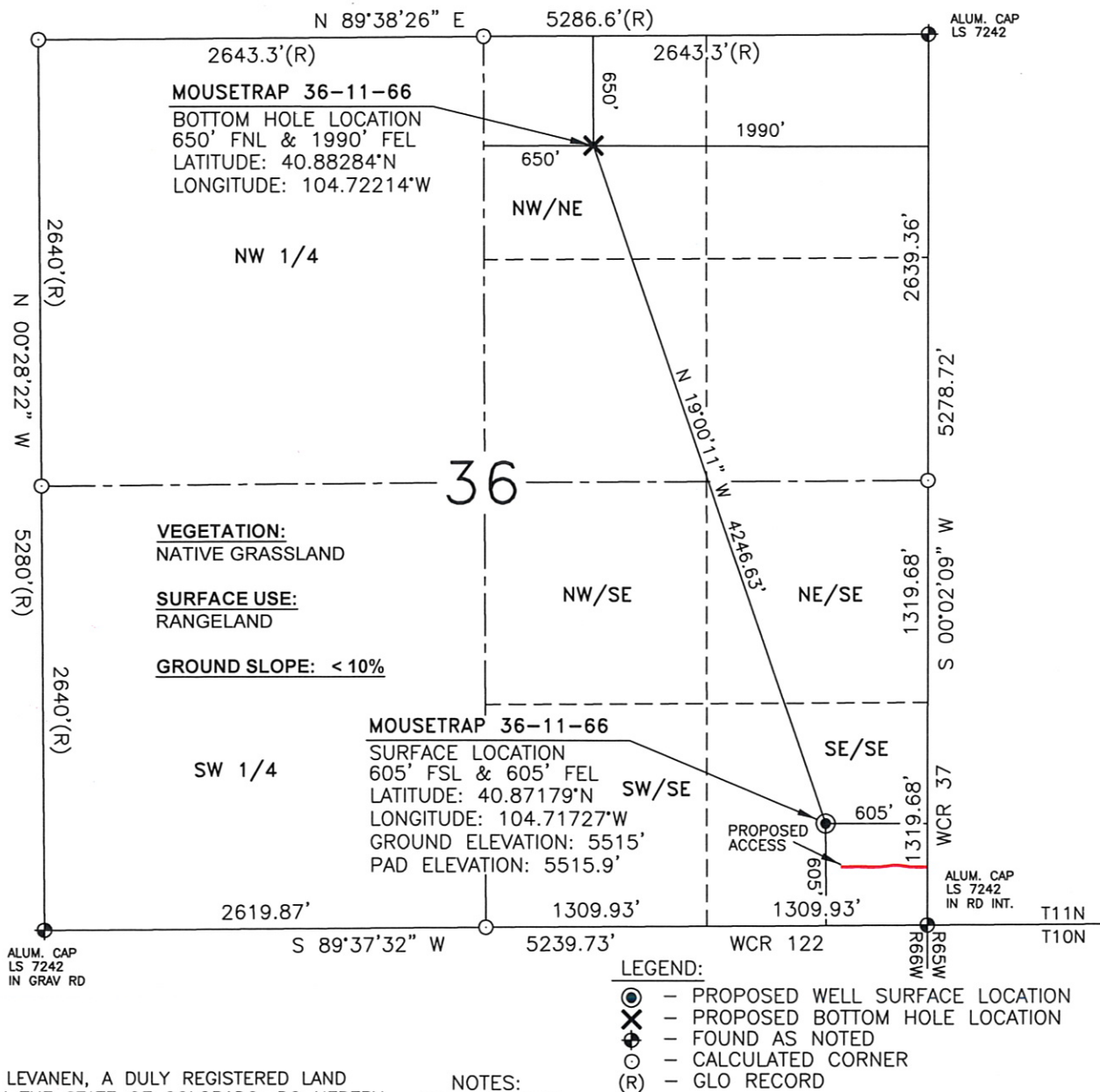
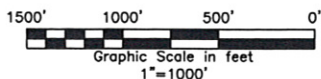


WELL LOCATION MAP

MOUSETRAP 36-11-66



I, JASON D. LEVANEN, A DULY REGISTERED LAND SURVEYOR IN THE STATE OF COLORADO, DO HEREBY CERTIFY THAT THIS PLAT WAS PREPARED FROM NOTES TAKEN DURING A SURVEY PERFORMED BY ME OR UNDER MY SUPERVISION ON APRIL 14, 2010.



WESTERN LAND SERVICES

Sheridan, WY 82801 (307)673-1817 Date: 4-22-10

DP: L:\Slawson\Well Plats\Well_Plats.dwg

Rev: 5-04-10

SLAWSON EXPLORATION
 COMPANY, INC.
 MOUSETRAP 36-11-66

SL: SE1/4SE1/4, S.36, T11N-R66W
 BL: NW1/4NE1/4, S.36, T11N-R66W
 6TH P.M., WELD COUNTY, COLORADO