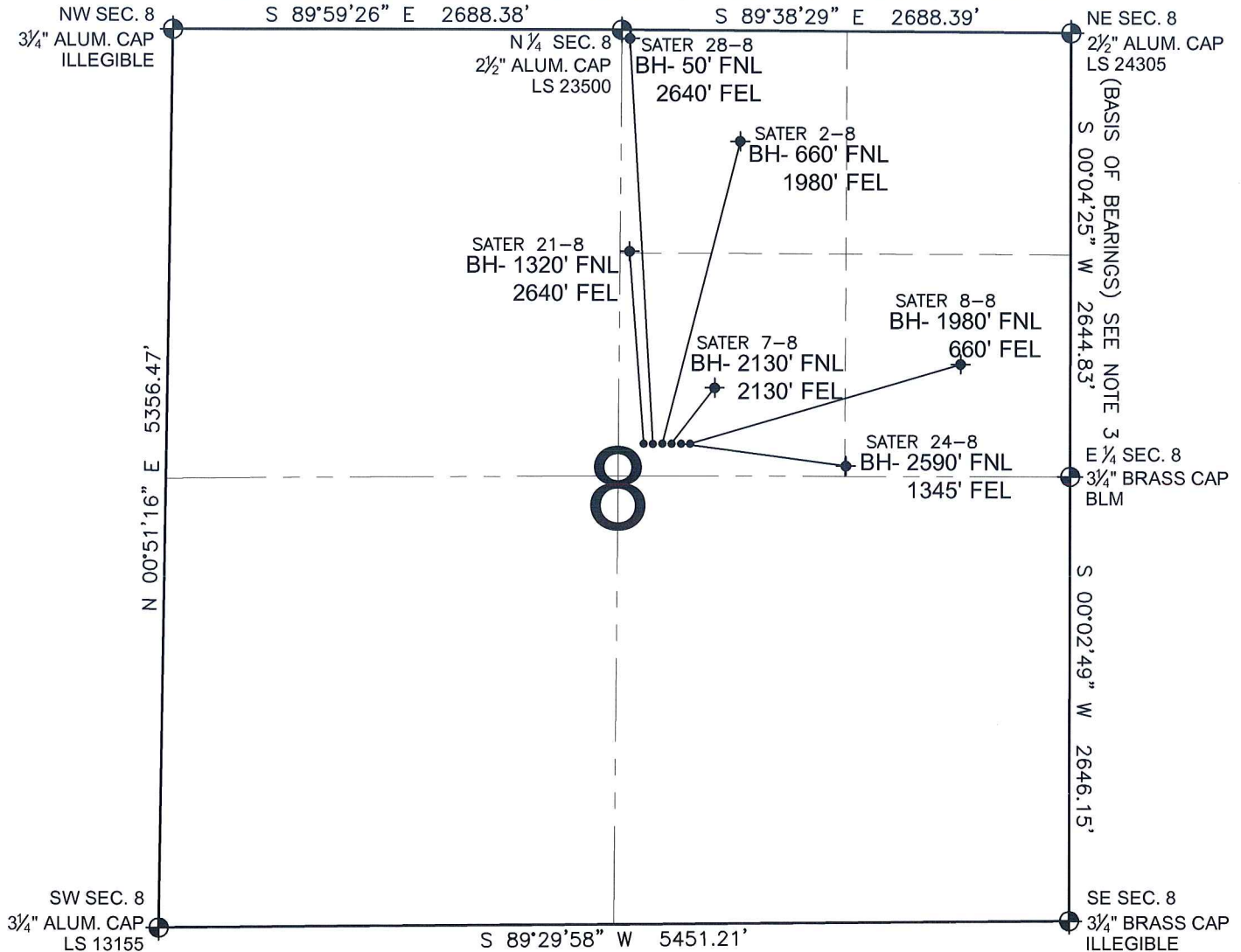


# PAD DRAWING - SATER 6 PAD

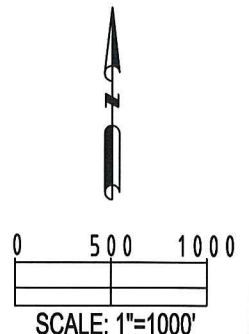
SECTION 8, TOWNSHIP 2 NORTH, RANGE 67 WEST, 6TH P.M.




- NOTES:
- THIS SURVEY WAS DONE BY GPS METHODS AND CONFORMS TO THE MINIMUM STANDARDS SET BY THE C.O.G.C.C., RULE NO. 215
  - ELEVATIONS SHOWN AT THE WELL HEAD, AS WELL AS HORIZONTAL CONTROL, ARE BASED ON GPS-RTK VALUES DERIVED FROM DOING 2-HOUR STATIC GPS SESSIONS AND REDUCTIONS USING O.P.U.S. SOLUTIONS.  
VERTICAL = NAVD88; HORIZONTAL = NAD83/92
  - THE BEARINGS SHOWN HEREON ARE BASED ON GPS OBSERVATIONS BETWEEN THE MONUMENTS SHOWN HEREON AS FOUND ON THE FIELD DATE BELOW.
  - DISTANCES SHOWN ARE AT GROUND LEVEL, AS MEASURED IN THE FIELD, WITH TIES TO WELLS MEASURED AT A PERPENDICULAR TO SECTION LINES.

## NOTES:

- SATER 21-8 TO BE AT 2466' FNL, 2554' FEL.
- BOTTOM HOLE AT 1320' FNL & 2640' FEL.
- SATER 28-8 TO BE AT 2466' FNL, 2538' FEL.
- BOTTOM HOLE AT 50' FNL & 2640' FEL.
- SATER 2-8 TO BE AT 2466' FNL, 2522' FEL.
- BOTTOM HOLE AT 660' FNL & 1980' FEL.
- SATER 7-8 TO BE AT 2466' FNL, 2506' FEL.
- BOTTOM HOLE AT 2130' FNL & 2130' FEL.
- SATER 24-8 TO BE AT 2466' FNL, 2490' FEL.
- BOTTOM HOLE AT 2590' FNL & 1345' FEL.
- SATER 8-8 TO BE AT 2466' FNL, 2474' FEL.
- BOTTOM HOLE AT 1980' FNL & 660' FEL.



REVISIONS		PREPARED BY:	 <b>PFS</b> Petroleum Field Services, LLC 1801 W. 13th Ave. Denver, CO 80204
INITIAL	DATE		

KERR-MCGEE OIL & GAS ONSHORE LP

FIELD DATE:  
03-18-10

PAD NAME:  
SATER 6 PAD

DRAWING DATE:  
03-22-10

SURFACE LOCATION:

BY:  
SMF

WELD COUNTY, COLORADO  
SW 1/4 NE 1/4, SEC. 8, T2N, R67W