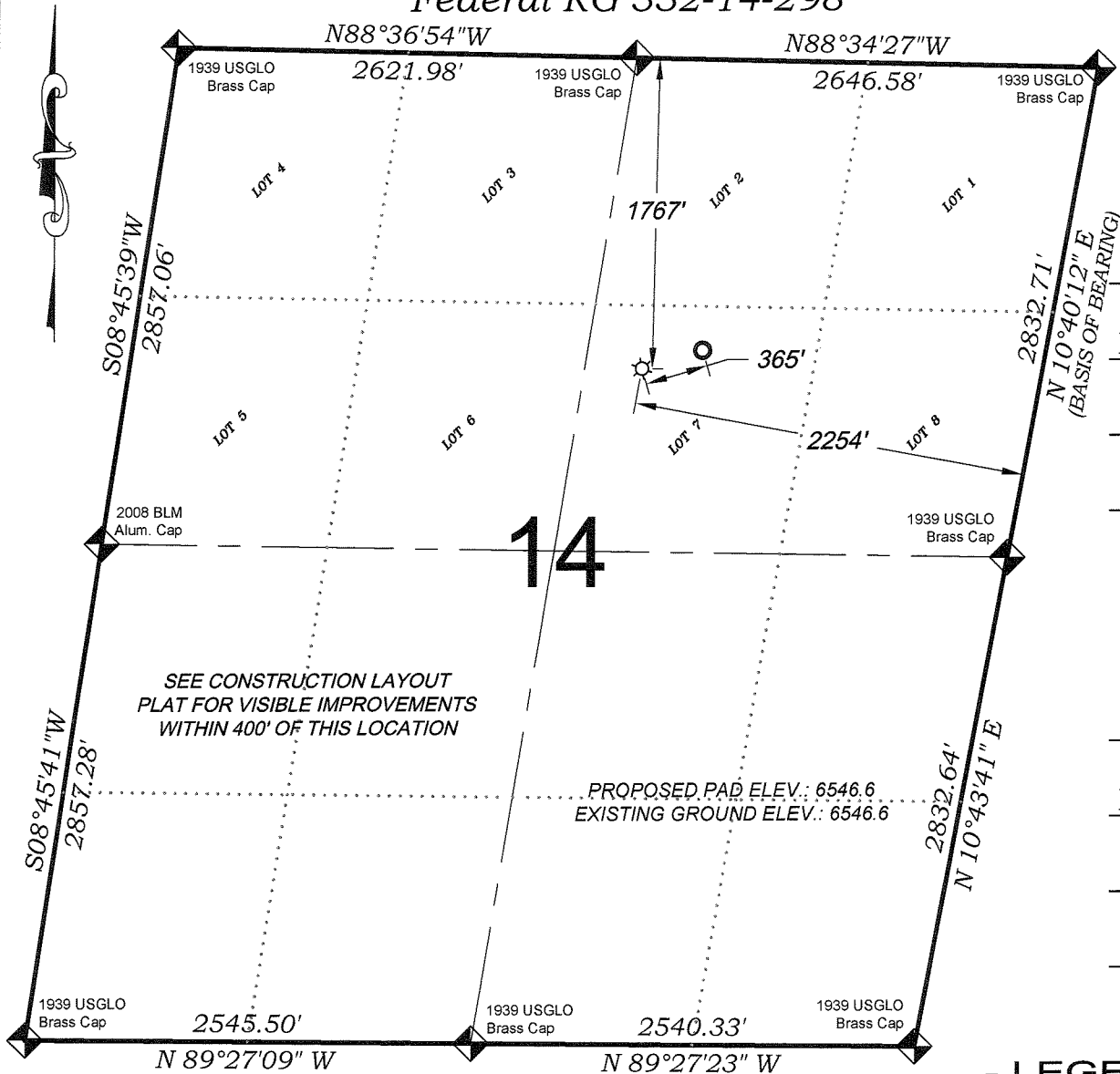


Federal RG 332-14-298



SHL
1767 FNL
2254 FEL

NAD 83
LATITUDE
39.880280°
LONGITUDE
-108.358300°
NORTHING
1758144.7
EASTING
2197922.9

BHL
1655 FNL
1930 FEL

NAD 83
LATITUDE
39.880593°
LONGITUDE
-108.357065°
NORTHING
1758247.8
EASTING
2198272.9

- LEGEND -

FIELD LOCATED SECTION MONUMENTS AS DESCRIBED

FIELD SURVEYED WELL LOCATION

CALCULATED BOTTOM HOLE LOCATION

CALCULATED SECTION CORNER LOCATION

SURVEYORS STATEMENT

I, MICHAEL J. LANGHORNE, A REGISTERED LAND SURVEYOR IN THE STATE OF COLORADO DO HEREBY CERTIFY THAT THE SURVEY SHOWN HEREON WAS PREPARED UNDER MY DIRECT SUPERVISION AND HAS BEEN STAKED ON THE GROUND AS SHOWN ON THE PLAT AND CHECKING THAT THIS MAP IS A TRUE REPRESENTATION THEREOF.

Michael J. Langhorne

MICHAEL J. LANGHORNE, COLORADO REGISTRATION NO. 36572
FOR AND ON BEHALF OF
BOOKCLIFF SURVEY SERVICES, INC.

REFERENCES

- 1) CORRECTIVE DEPENDENT RESURVEY T. 2 S., R. 98 W., 6th P.M (GLO PLAT)
- 2) U.S.G.S. QUAD: Rock School and Square S Ranch, CO

SURVEY DATE: 2/3/10
MAP DATE: 3/31/10
SCALE: 1" = 1000'
PLAT: 1 of 1
PROJECT: Williams High

136 East Third Street
Rifle, Colorado 81650
Ph: (970) 625-1330
Fax: (970) 625-2773



BOOKCLIFF
Survey Services, Inc.

NOTES

- 1) ELEVATIONS BASED ON N.A.V.D. 1988 PUBLISHED COORDINATES.
- 2) LATITUDES AND LONGITUDES ARE BASE ON NAD 83, PUBLISHED COORDINATES
- 3) STATE PLANE COORDINATES ARE BASED ON COLORADO CENTRAL ZONE, U.S. SURVEY FEET.
- 4) ELEVATION MASK SET TO 15°
- 5) GPS OPERATOR J. KIRKPATRICK, OBSERVED A PDOP OF 0.8 FOR SURVEY POINT NUMBER 121110.
- 6) SURFACE AND BOTTOM HOLE LOCATIONS ARE MEASURED 90° FROM SECTION LINES.

WELL LOCATION PLAT Prepared for:
Williams. Williams Production, RMT
SW1/4 NE1/4, SECTION 14
T. 2 S., R. 98 W. of the 6th. P.M.
GARFIELD COUNTY, COLORADO