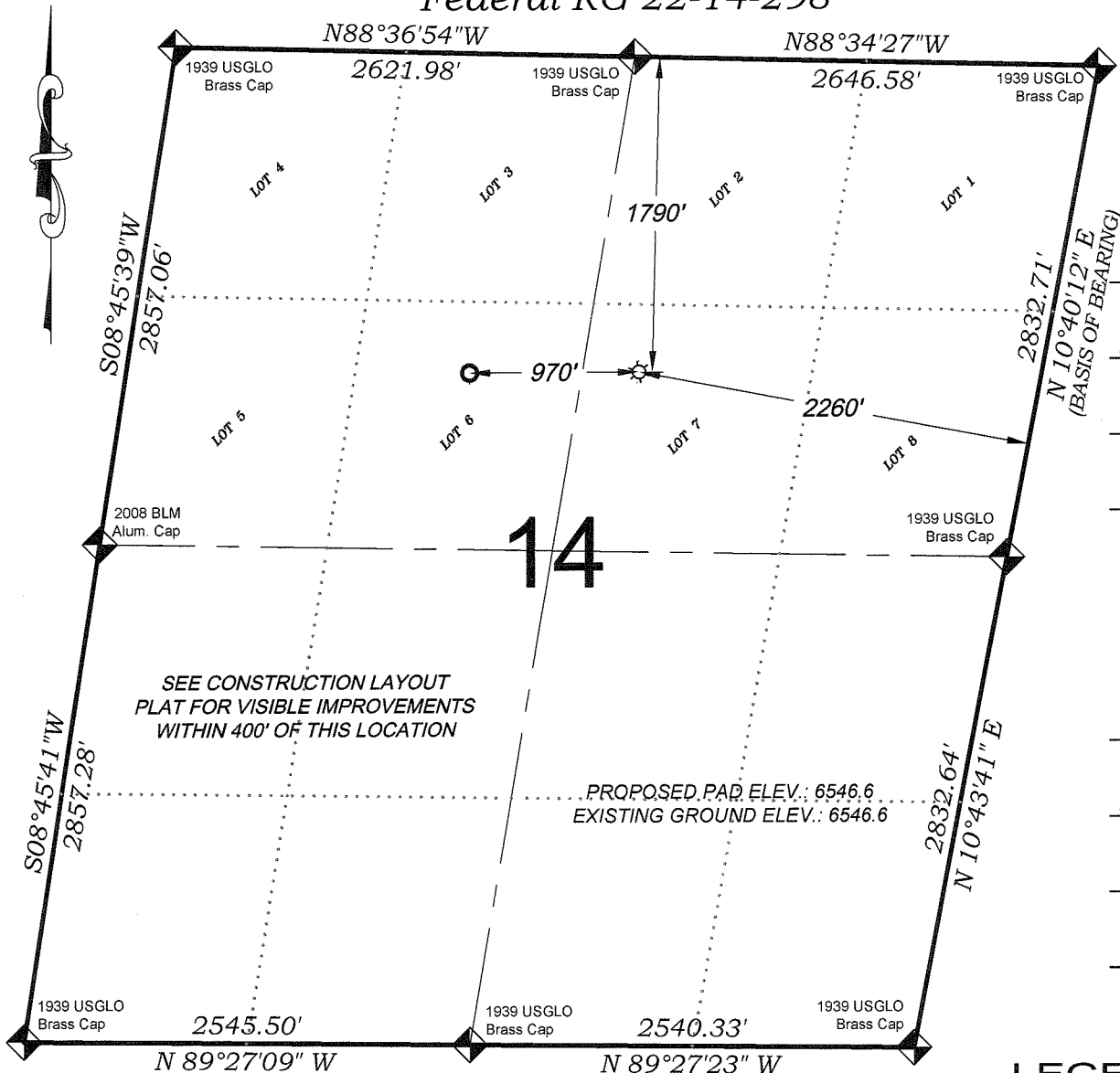


Federal RG 22-14-298



SHL
1790 FNL
2260 FEL
NAD 83
LATITUDE
39.880217°
LONGITUDE
-108.358331°
NORTHING
1758122.0
EASTING
2197913.5
BHL
1816 FNL
1936 FWL
NAD 83
LATITUDE
39.880126°
LONGITUDE
-108.361784°
NORTHING
1758119.5
EASTING
2196943.7

- LEGEND -

FIELD LOCATED SECTION MONUMENTS AS DESCRIBED

FIELD SURVEYED WELL LOCATION

CALCULATED BOTTOM HOLE LOCATION

CALCULATED SECTION CORNER LOCATION

NOTES

- 1) ELEVATIONS BASED ON N.A.V.D. 1988 PUBLISHED COORDINATES.
- 2) LATITUDES AND LONGITUDES ARE BASE ON NAD 83, PUBLISHED COORDINATES
- 3) STATE PLANE COORDINATES ARE BASED ON COLORADO CENTRAL ZONE, U.S. SURVEY FEET.
- 4) ELEVATION MASK SET TO 15"
- 5) GPS OPERATOR J. KIRKPATRICK, OBSERVED A PDOP OF 0.8 FOR SURVEY POINT NUMBER 121110.
- 6) SURFACE AND BOTTOM HOLE LOCATIONS ARE MEASURED 90° FROM SECTION LINES.

WELL LOCATION PLAT Prepared for:
Williams. Williams Production, RMT
 SW1/4 NE1/4, SECTION 14
 T. 2 S., R. 98 W. of the 6th. P.M.
 GARFIELD COUNTY, COLORADO

SURVEYORS STATEMENT

I, MICHAEL J. LANGHORNE, A REGISTERED LAND SURVEYOR IN THE STATE OF COLORADO DO HEREBY CERTIFY THAT THE SURVEY SHOWN HEREON WAS PREPARED UNDER MY DIRECT SUPERVISION AND HAS BEEN STAKED ON THE GROUND AS SHOWN ON THE PLAT AND CHECKING THAT THIS MAP IS A TRUE REPRESENTATION THEREOF.

MICHAEL J. LANGHORNE, COLORADO REGISTRATION NO. 36572
 FOR AND ON BEHALF OF
 BOOKCLIFF SURVEY SERVICES, INC.

REFERENCES

- 1) CORRECTIVE DEPENDENT RESURVEY T. 2 S., R. 98 W., 6th P.M (GLO PLAT)
- 2) U.S.G.S. QUAD: Rock School and Square S Ranch, CO

136 East Third Street
 Rifle, Colorado 81650
 Ph: (970) 625-1330
 Fax: (970) 625-3773



BOOKCLIFF
 Survey Services, Inc.

SURVEY DATE: 2/3/10
 MAP DATE: 3/31/10
 SCALE: 1" = 1000'
 PLAT: 1 of 1
 PROJECT: Williams High