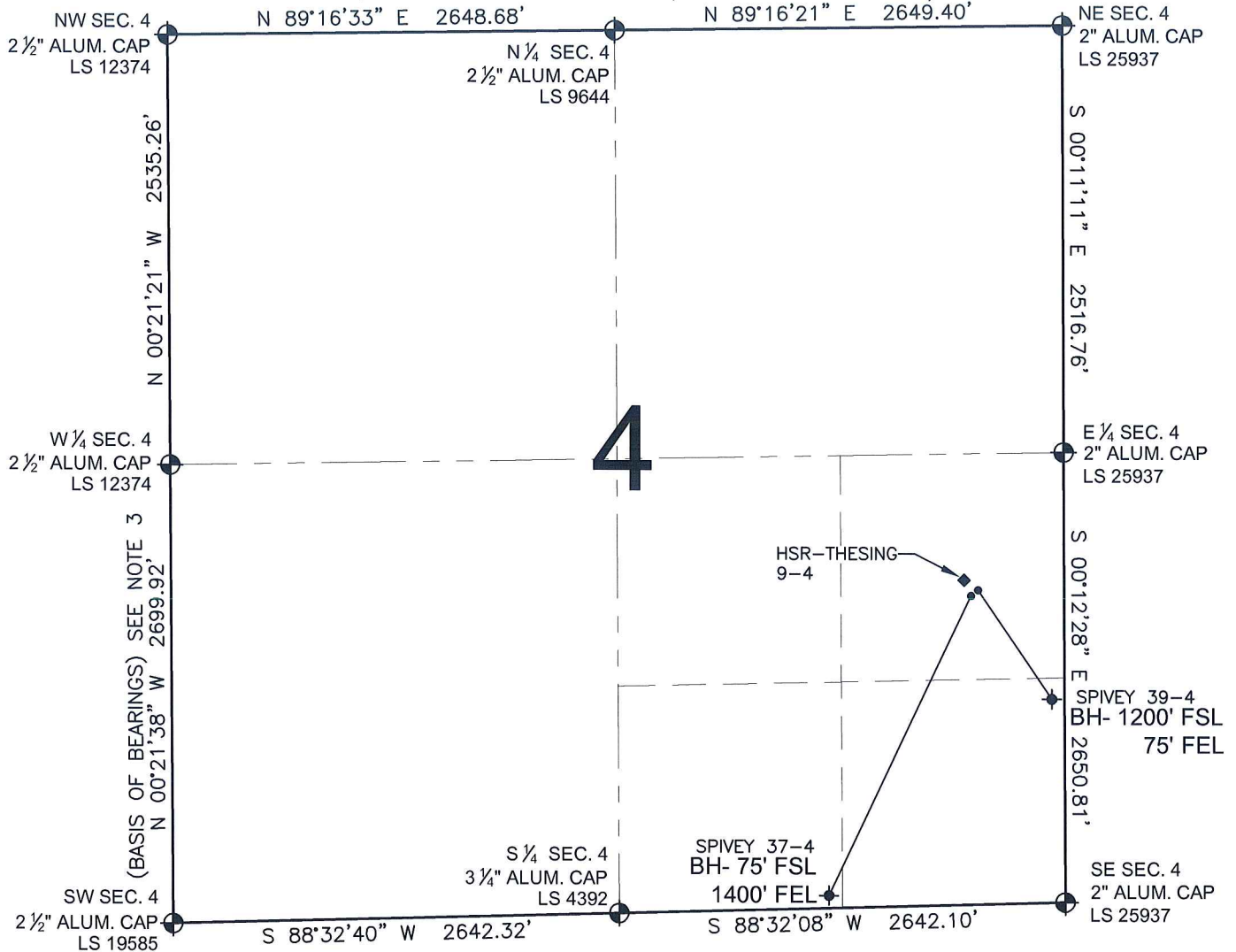


PAD DRAWING - SPIVEY 2 PAD

SECTION 4, TOWNSHIP 3 NORTH, RANGE 66 WEST, 6TH P.M.



LEGEND

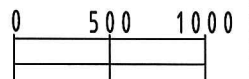
- ⊙ = EXISTING MONUMENT
- ⊕ = BOTTOM HOLE
- BH= BOTTOM HOLE
- = PROPOSED WELL
- ◆ = EXISTING WELL

NOTES:

- THIS SURVEY WAS DONE BY GPS METHODS AND CONFORMS TO THE MINIMUM STANDARDS SET BY THE C.O.G.C.C., RULE NO. 215
- ELEVATIONS SHOWN AT THE WELL HEAD, AS WELL AS HORIZONTAL CONTROL, ARE BASED ON GPS-RTK VALUES DERIVED FROM DOING 2-HOUR STATIC GPS SESSIONS AND REDUCTIONS USING O.P.U.S. SOLUTIONS.
VERTICAL = NAVD88; HORIZONTAL = NAD83/92
- THE BEARINGS SHOWN HEREON ARE BASED ON GPS OBSERVATIONS BETWEEN THE MONUMENTS SHOWN HEREON AS FOUND ON THE FIELD DATE BELOW.
- DISTANCES SHOWN ARE AT GROUND LEVEL, AS MEASURED IN THE FIELD, WITH TIES TO WELLS MEASURED AT A PERPENDICULAR TO SECTION LINES.

NOTES:

- SPIVEY 37-4 TO BE AT 1840' FSL, 517' FEL.
BOTTOM HOLE AT 75' FSL & 1400' FEL.
SPIVEY 39-4 TO BE AT 1853' FSL, 509' FEL.
BOTTOM HOLE AT 1200' FSL & 75' FEL.
HSR-THESING 9-4 IS 1877' FSL, 552' FEL.



SCALE: 1"=1000'

REVISIONS

INITIAL	DATE

PREPARED BY:

PFS

Petroleum Field Services, LLC
1801 W. 13th Ave.
Denver, CO 80204



KERR-MCGEE OIL & GAS ONSHORE LP

FIELD DATE:
03-22-10

DRAWING DATE:
03-23-10

BY:
SMF

PAD NAME:

SPIVEY 2 PAD

SURFACE LOCATION:

WELD COUNTY, COLORADO
NE 1/4 SE 1/4, SEC. 4, T3N, R66W