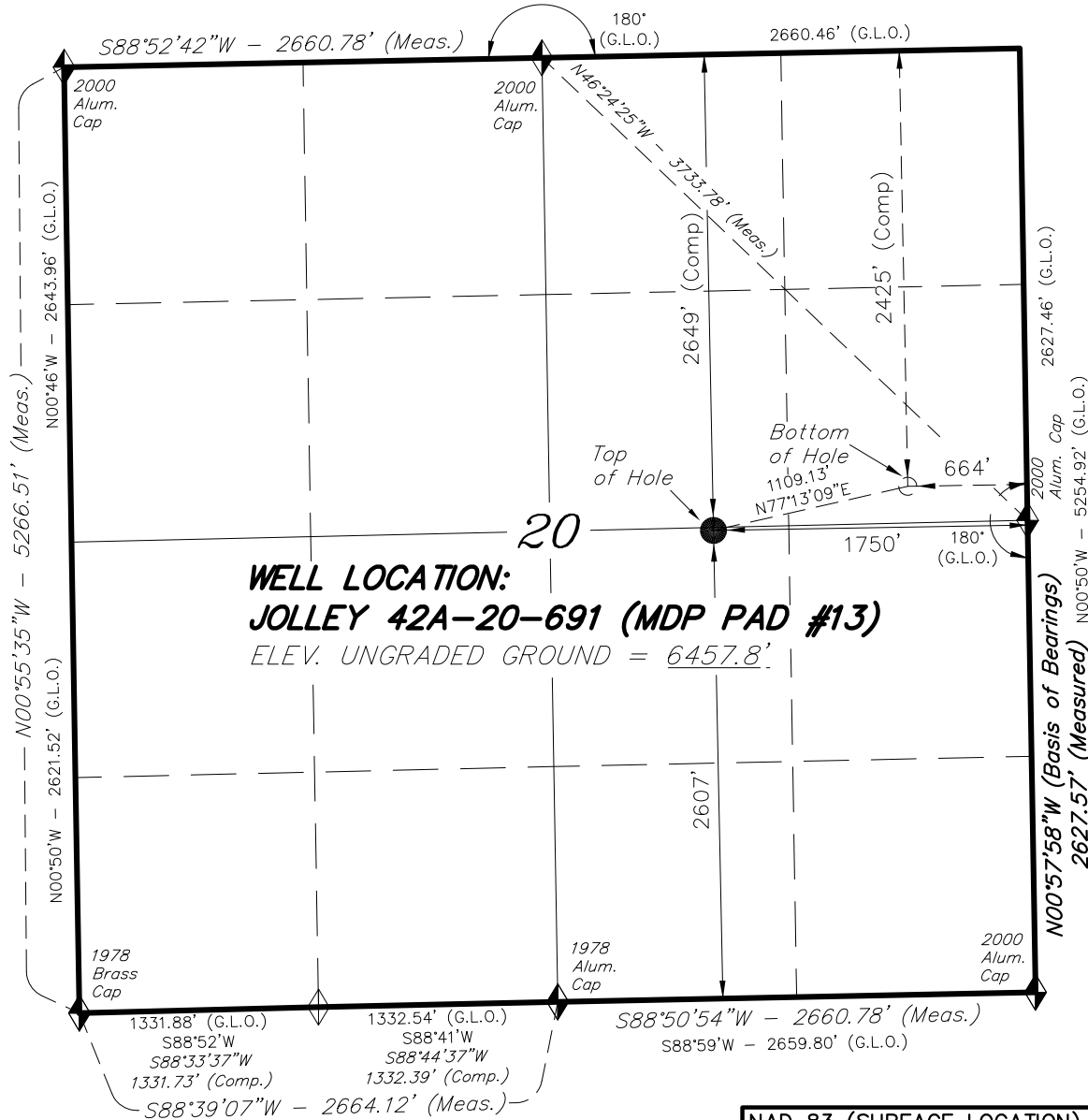


T6S, R91W, 6th P.M.

S89°01'W - 5320.92' (G.L.O.)



NAD 83 (SURFACE LOCATION)

LATITUDE = 39°30'47.77"
(39.513270)

LONGITUDE = 107°34'29.79"
(107.574943)

◆ = SECTION CORNERS LOCATED

Basis of elevation is the Rifle 2 Triangulation Station. 39°31'53.80" N Lat. & 107°47'07.78" W Long. (NAD 83). Elevation = 5323.1' (NAVD88).

BILL BARRETT CORP.

WELL LOCATION, JOLLEY 42A-20-691 (MDP PAD #13), LOCATED AS SHOWN IN THE NW 1/4 SE 1/4 OF SECTION 20, T6S, R91W, 6th P.M. GARFIELD COUNTY, COLORADO.



NOTES:

1. Well footages are measured at right angles to the Section Lines.
2. Bearings are based on Global Positioning Satellite observations.
3. The Bottom of hole bears N74°10'15"W 693.57' from the East 1/4 Corner.
4. G.P.S. Operator: D. Slaugh, (PDOP) = 1.8

IMPROVEMENT NOTE:

See addendum to legal plat (sheet 2i) for existing improvements within 400' of the proposed well head.

THIS IS TO CERTIFY THAT THE ABOVE PLAT WAS PREPARED FROM FIELD NOTES OF SURVEYS MADE BY ME OR UNDER MY SUPERVISION. THE LOCATION HAS BEEN STAKED ON THE GROUND AS SHOWN ON THE PLAT, AND THAT THE SAME ARE TRUE AND CORRECT TO THE BEST OF MY KNOWLEDGE AND BELIEF.

Surveyor's Signature
 # 30125
 REGISTERED LAND SURVEYOR
 REGISTRATION No. 30125
 STATE OF COLORADO

TRI STATE LAND SURVEYING & CONSULTING

180 NORTH VERNAL AVE. - VERNAL, UTAH 84078
(435) 781-2501

DATE SURVEYED: 01-05-10	SURVEYED BY: C.D.S.	SHEET 2a OF 12
DATE DRAWN: 01-08-09	DRAWN BY: L.C.S.	
REVISED:	SCALE: 1" = 1000'	