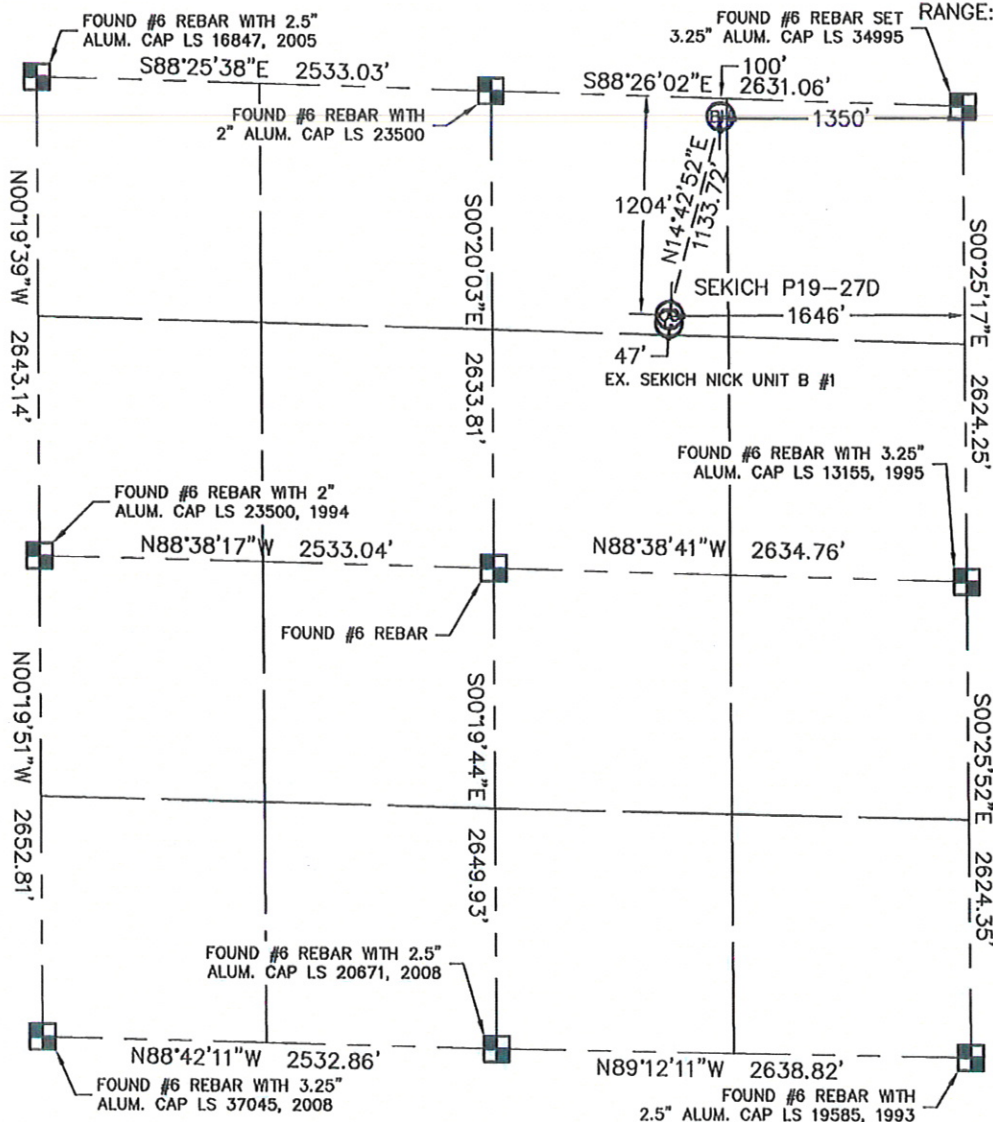


WELL LOCATION CERTIFICATE

THIS MAP DOES NOT REPRESENT A BOUNDARY SURVEY

SECTION: 19
TOWNSHIP: 3N
RANGE: 67WIn accordance with a request from Matt Campbell with Noble Energy Inc.King Surveyors Inc. has determined the surface location of the SEKICH P19-270 to be 1204' from the NORTH line and 1646' from the EAST line and the bottom hole to be 100' from the NORTH line and 1350' from the EAST line as measured at right angles from the section line of Section 19, Township 3 North, Range 67 West of the Sixth Principal Meridian, County of Weld, State of Colorado.I hereby state that this Well Location Certificate was prepared by me, or under my direct supervision, that the fieldwork was completed on 2-1-10, for and on behalf of Noble Energy Inc. That this is not a Land Survey Plat or an Improvement Survey Plat, and that it is not to be relied upon for establishment of fence, building, or other future improvement lines.

NOTE:

- 1) Bearings shown are Grid Bearings of the Colorado State Plane Coordinate System, North Zone, North American Datum 1983/2007. The lineal dimensions as contained herein are based upon the "U.S. Survey Foot."
- 2) Ground elevations are based on an observed GPS elevation (NAVD 1988 DATUM).
- 3) NEAREST EXISTING WELL: SEKICH NICK UNIT B #1 47'
- 4) IMPROVEMENTS: See VISIBLE IMPROVEMENTS exhibit for all visible improvements within 400' of well head.
- 5) SURFACE USE: PASTURE, EXISTING WELL SITE

SURFACE LOCATION

LATITUDE: 40.21547°N
 LONGITUDE: 104.92917°W
 PDOP: 1.1
 ELEV: 4898
 1/4, 1/4: NW1/4NE1/4
 NEAREST PROPERTY LINE: 162' SOUTH

BOTTOM HOLE

LATITUDE: 40.21847°N
 LONGITUDE: 104.92811°W

NOTE

According to Colorado law, you must commence any legal action based upon any defect in this W.L.C. within three years after you discover such defect. In no event, may any action based upon any defect in this survey be commenced more than ten years after the date of the certificate shown hereon. (13-80-105 C.R.S.)

LEGEND



= ALIQUOT MONUMENT AS DESCRIBED



= CALCULATED POSITION



PROJECT#: 2010028

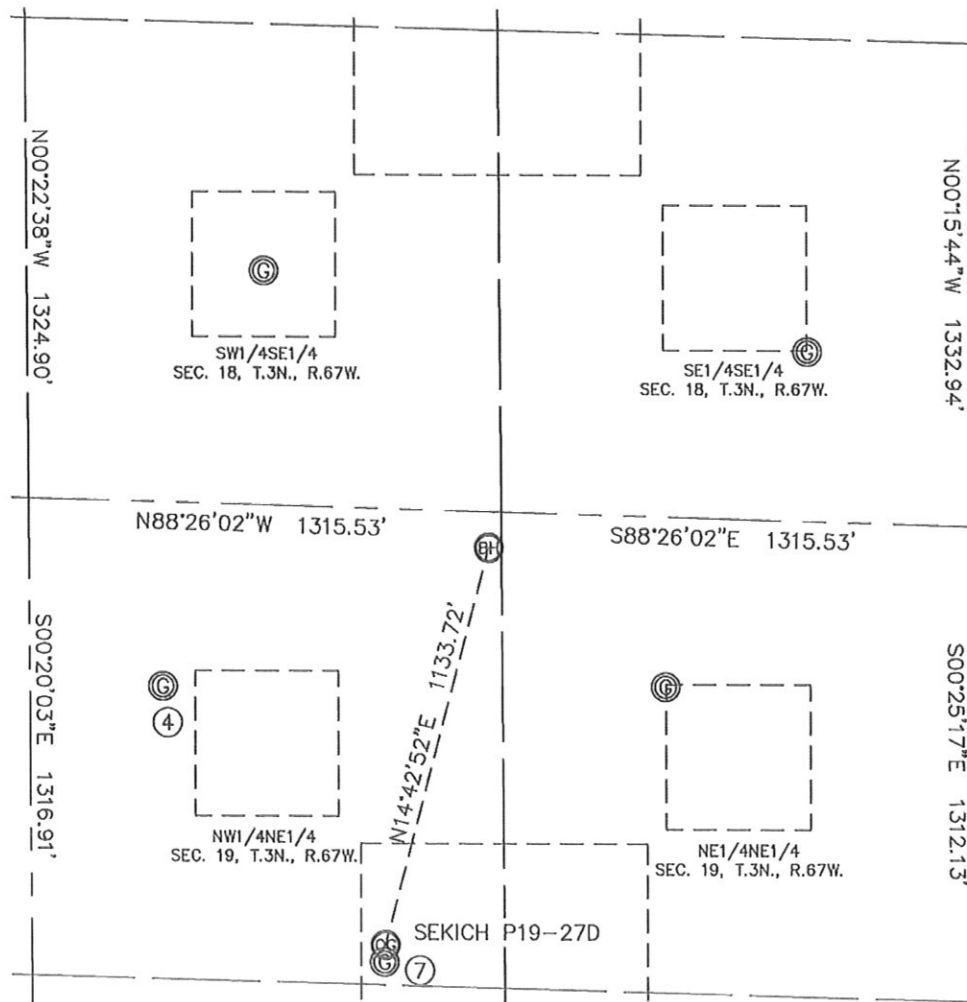
KING SURVEYORS, INC.

650 E. GARDEN DR.

WINDSOR, CO 80550

SITE SKETCH

SECTION: 19
TOWNSHIP: 3N
RANGE: 67W



①
HSR SEKICH FARMS 15-18
SW $\frac{1}{4}$ SE $\frac{1}{4}$
646' FSL
1973' FEL
LAT--40.22058°N
LONG--104.93034°W
PDOP: 3.5
ELEV: 4878

②
HSR SEKICH FARMS 16-18
SE $\frac{1}{4}$ SE $\frac{1}{4}$
467' FSL
457' FEL
LAT--40.21995°N
LONG--104.92492°W
PDOP: 1.7
ELEV: 4884

③
SEKICH FARMS 19-1L
NE $\frac{1}{4}$ NE $\frac{1}{4}$
469' FNL
858' FEL
LAT--40.21742°N
LONG--104.92635°W
PDOP: 1.8
ELEV: 4895

④
SEKICH FARMS 19-2L
NW $\frac{1}{4}$ NE $\frac{1}{4}$
509' FNL
2262' FEL
LAT--40.21744°N
LONG--104.93138°W
PDOP: 3.2
ELEV: 4895

⑦
SEKICH NICK UNIT B #1
NW $\frac{1}{4}$ NE $\frac{1}{4}$
1251' FNL
1650' FEL
LAT--40.21534°N
LONG--104.92918°W
PDOP: 1.1
ELEV: 4898

