



WESTERN LAND SERVICES

Sheridan, WY 82801 (307)673-1817

Location Drawing

SURFACE USE: RANGELAND
VEGETATION: NATIVE GRASSES

Western Land Surveying of Sheridan, Wyoming, in accordance with a request from Slawson Exploration Company, Inc, has determined the location of Moonshine 36-11-65 to be 605 feet FEL, and 605 feet FSL, (90° off Section Lines) of Section 36, Township 11N, Range 65W, of the 6th Principal Meridian, Weld County, Colorado.

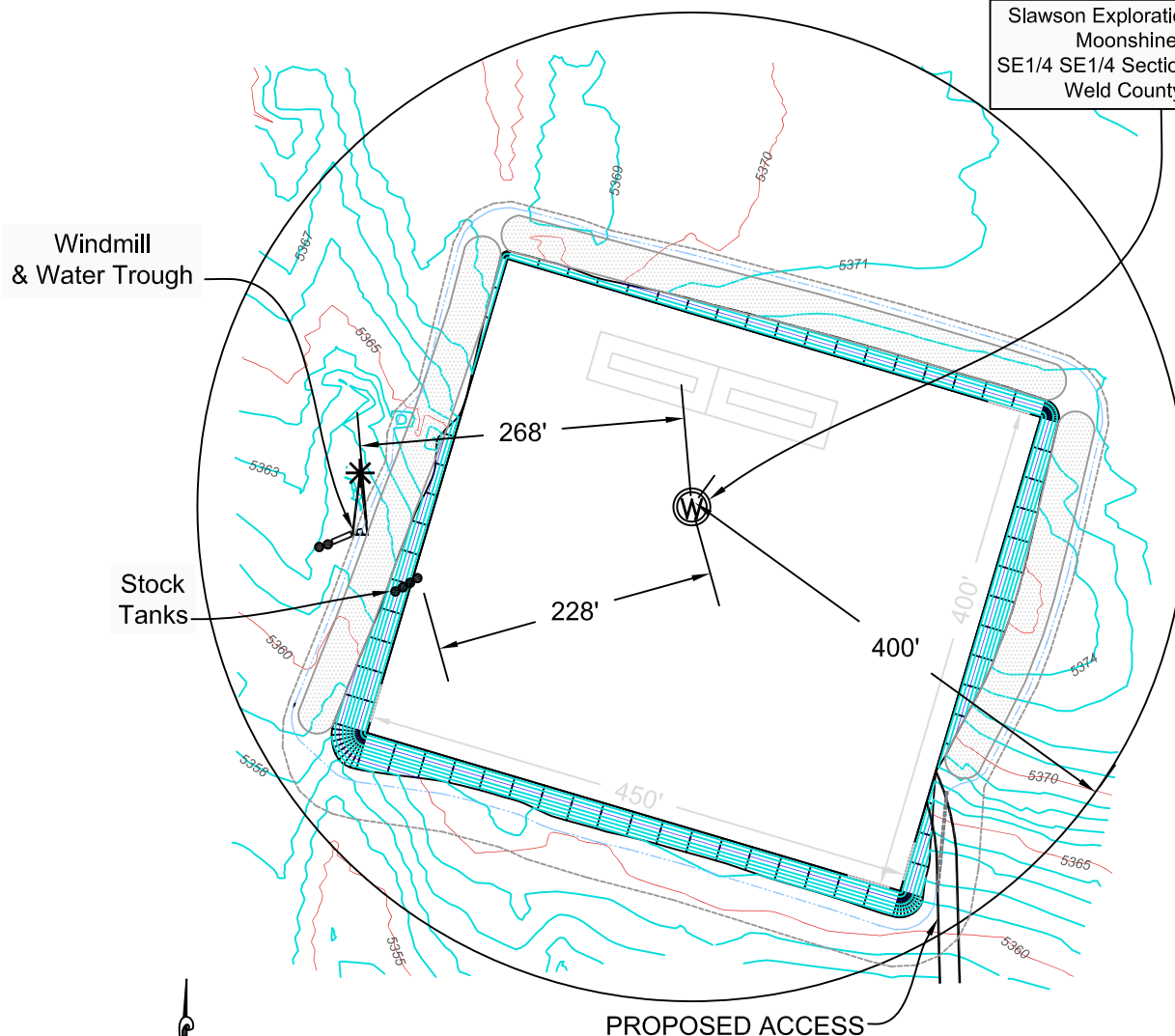
Date: Staked on 4/14/2010, drawn on 4/28/2010

Staked by: Clayton Rosenlund

Drawn by: Heather Hairston

Revised: 4/30/2010, 5/03/2010, 5/11/2010

Slawson Exploration Company, Inc.
Moonshine 36-11-65
SE1/4 SE1/4 Section 36, T11N R65W
Weld County, Colorado



0 150' 300'



Graphic Scale in Feet
1 Inch = 400 Feet