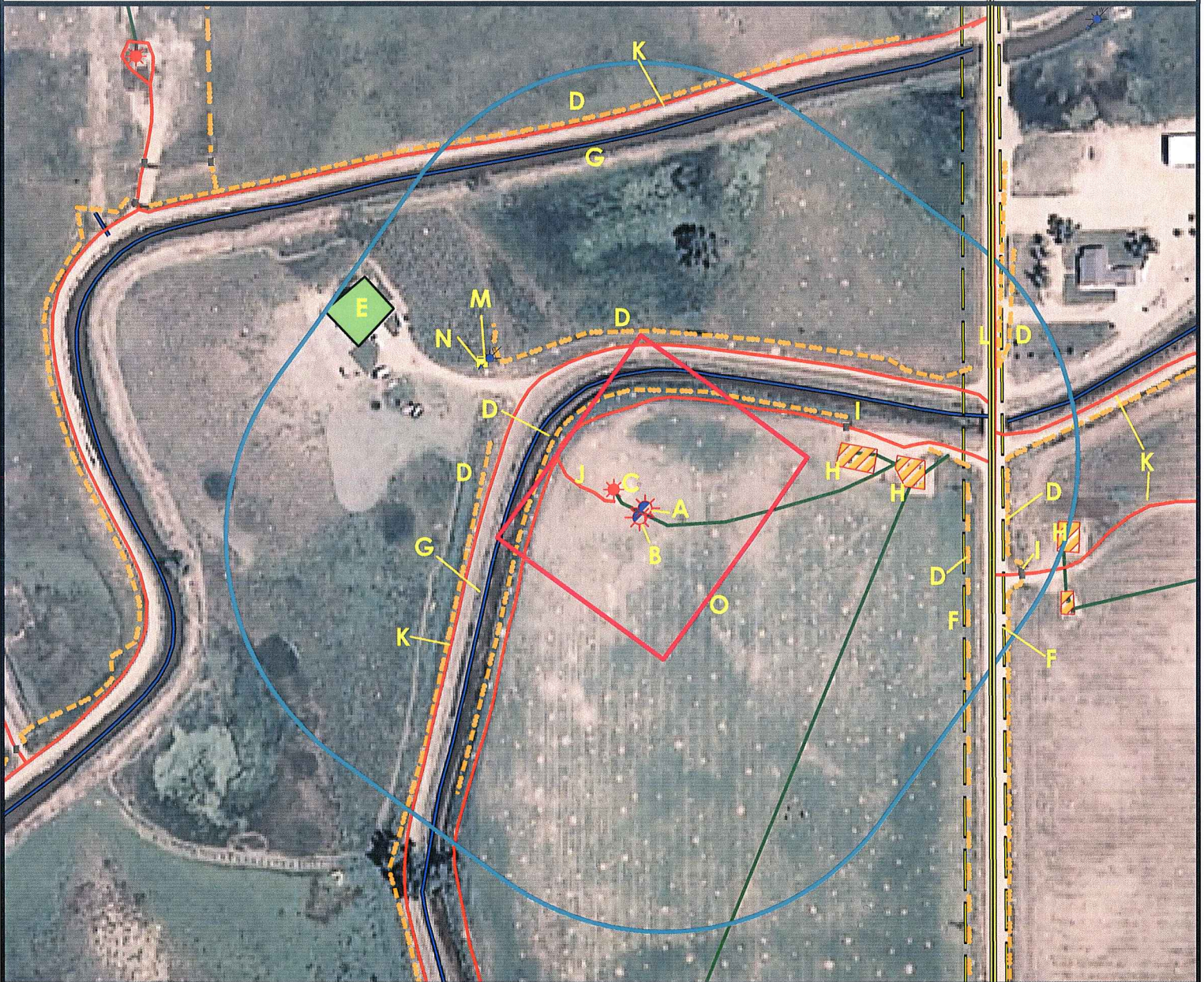


# Location Drawing



- A. Proposed Well SPIVEY 39-4.  
 B. Proposed Well SPIVEY 37-4.  
 C. Existing Well HSR - THESING 9-4.  
 D. Fences are 170' NW, 247' NW, 260' N, 480' E, 536' E, 581' N, and 610' NE.  
 E. Occupied Building is 475' NW.  
 F. Overhead Power Lines are 465' E and 527' E.  
 G. Canals are 192' NW and 545' N.  
 H. Existing Oil and Gas Facilities are 295' NE, 384' E, and 612' E.  
 I. Gates are 320' NE and 561' SE.

- J. Access Road is 60' W.  
 K. Service Roads are 236' N, 580' E, 583' N, and 591' SE.  
 L. County Road 31 is 516' E.  
 M. Weld County Water Well (#251123) is 319' NW.  
 N. Utility Box is 320' NW.  
 O. Operational Disturbance Area.



0 100 200 400  
Feet

## Legend

- |  |                      |  |                      |
|--|----------------------|--|----------------------|
|  | Proposed Well        |  | Building/Residence   |
|  | Existing Well        |  | Oil & Gas Equipment  |
|  | Plugged Well         |  | Water Body           |
|  | Water Well           |  | Utility Box          |
|  | CattleGuard/Gate     |  | Railroad             |
|  | Bridge               |  | Fence                |
|  | Disturbance Area     |  | Overhead Power Line  |
|  | 400' Radius          |  | Underground Pipeline |
|  | Facilities Enclosure |  | County Road          |
|  |                      |  | Access Road          |
|  |                      |  | Ditch/Canal          |
|  |                      |  | Concrete Ditch       |

## 400ft Radius Map

### SPIVEY 39-4 Pad Multi Well Pad

Surface Location: T3N R66W S04  
 Description of surface uses : Open Field

Field Date: 03/22/2010  
 Drawing Date: 03/24/2010  
 Drafter: KLM  
 Checked By: BHF

Aerial Photo supplied by NAIP - 2009

Prepared for:  
**KERR-MCGEE OIL &  
 GAS ONSHORE LP**



Use our resources to find yours!  
[www.petro-fs.com](http://www.petro-fs.com)

1801 W. 13th Ave Suite 207  
 Denver, CO 80204  
 (303) 928-7128  
 111 E. Third Street  
 Rifle, CO 81650  
 (970) 625-4740