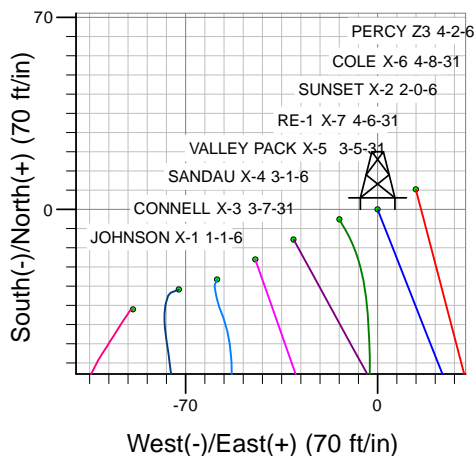
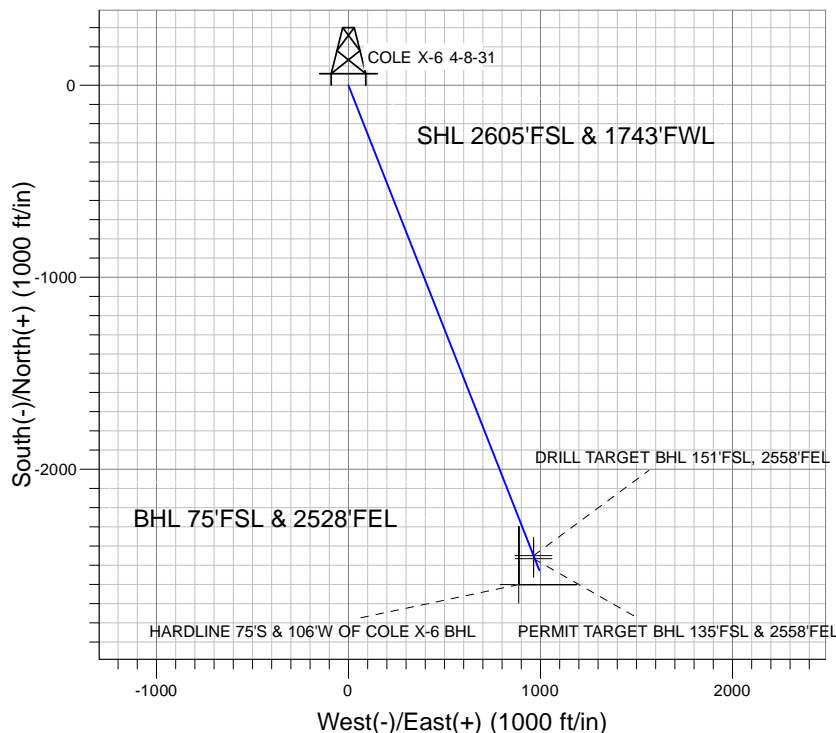
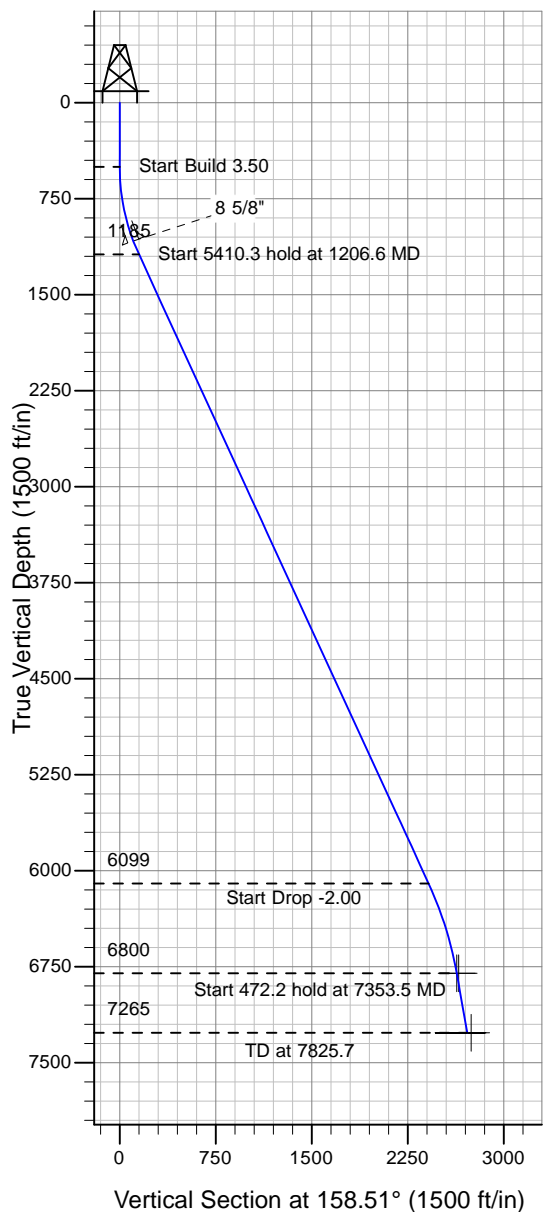


Well Name: COLE X-6 4-8-31

Surface Location: PAD X SEC.31-T5N-R65W
 North American Datum 1983 , US State Plane 1983 , Colorado Northern Zone
 Ground Elevation: 4659.0

+N/-S+E/-W Northing Easting Latitude Longitude Slot
 0.0 0.0 1373375.05 3220317.58 40° 21' 20.232 N 104° 42' 34.020 W
 Original Well Elev WELL @ 4673.0ft (Original Well Elev)

Mineral Resources Inc



PAD X SEC.31-T5N-R65W
 COLE X-6 4-8-31
 Plan #7 (3-29-10)
 13:52, April 01 2010



Azimuths to True North
 Magnetic North: 8.99°
 Magnetic Field
 Strength: 53288.1nT
 Dip Angle: 67.08°
 Date: 12/31/2009
 Model: IGRF200510

WELLBORE TARGET DETAILS (LAT/LONG)

Name	TVD	+N/-S	+E/-W	Latitude	Longitude	Shape
DRILL TARGET BHL 151'FSL, 2558'FEL	6800.0	-2449.9	964.4	40° 20' 56.022 N	104° 42' 21.564 W	Point
PERMIT TARGET BHL 135'FSL & 2558'FEL	6800.0	-2466.3	964.4	40° 20' 55.860 N	104° 42' 21.564 W	Point
HARDLINE 75'S & 106'W OF COLE X-6 BHL	7265.0	-2601.3	887.4	40° 20' 54.526 N	104° 42' 22.559 W	Polygon

SECTION DETAILS

Sec	MD	Inc	Azi	TVD	+N/-S	+E/-W	DLeg	TFace	VSec	Target
1	0.0	0.00	0.00	0.0	0.0	0.0	0.00	0.00	0.0	
2	500.0	0.00	0.00	500.0	0.0	0.0	0.00	0.00	0.0	
3	1206.6	24.73	158.51	1184.9	-139.7	55.0	3.50	158.51	150.2	
4	6616.9	24.73	158.51	6098.9	-2245.9	884.1	0.00	0.00	2413.6	
5	7353.5	10.00	158.51	6800.0	-2449.9	964.4	2.00	180.00	2632.9	DRILL TARGET BHL 151'FSL, 2558'FEL
6	7825.7	10.00	158.51	7265.0	-2526.2	994.4	0.00	0.00	2714.9	



Mineral Resources Inc

SEC.31-T5N-R65W

PAD X SEC.31-T5N-R65W

COLE X-6 4-8-31

Wellbore #1

Plan: Plan #7 (3-29-10)

Standard Planning Report

01 April, 2010

Database:	EDM den0-adp01 Server Data	Local Co-ordinate Reference:	Well COLE X-6 4-8-31
Company:	Mineral Resources Inc	TVD Reference:	WELL @ 4673.0ft (Original Well Elev)
Project:	SEC.31-T5N-R65W	MD Reference:	WELL @ 4673.0ft (Original Well Elev)
Site:	PAD X SEC.31-T5N-R65W	North Reference:	True
Well:	COLE X-6 4-8-31	Survey Calculation Method:	Minimum Curvature
Wellbore:	Wellbore #1		
Design:	Plan #7 (3-29-10)		

Project	SEC.31-T5N-R65W		
Map System:	US State Plane 1983	System Datum:	Mean Sea Level
Geo Datum:	North American Datum 1983		Using Well Reference Point
Map Zone:	Colorado Northern Zone		Using geodetic scale factor

Site	PAD X SEC.31-T5N-R65W		
Site Position:		Northing:	1,373,371.29ft
From:	Lat/Long	Easting:	3,220,303.68ft
Position Uncertainty:	0.0 ft	Slot Radius:	"
		Latitude:	40° 21' 20.196 N
		Longitude:	104° 42' 34.200 W
		Grid Convergence:	0.51 °

Well	COLE X-6 4-8-31		
Well Position	+N/-S	3.6 ft	Northing: 1,373,375.05 ft
	+E/-W	13.9 ft	Easting: 3,220,317.58 ft
Position Uncertainty		0.0 ft	Wellhead Elevation: ft
			Latitude: 40° 21' 20.232 N
			Longitude: 104° 42' 34.020 W
			Ground Level: 4,659.0 ft

Wellbore	Wellbore #1		
Magnetics	Model Name	Sample Date	Declination (°)
	IGRF200510	1/28/2008	9.25
	IGRF200510	7/22/2008	9.19
	IGRF200510	12/31/2009	8.99
			Dip Angle (°)
			67.15
			67.13
			67.08
			Field Strength (nT)
			53,487
			53,437
			53,288

Design	Plan #7 (3-29-10)		
Audit Notes:			
Version:	Phase:	PROTOTYPE	Tie On Depth: 0.0
Vertical Section:	Depth From (TVD) (ft)	+N/-S (ft)	+E/-W (ft)
	0.0	0.0	0.0
			Direction (°)
			158.51

Plan Sections										
Measured Depth (ft)	Inclination (°)	Azimuth (°)	Vertical Depth (ft)	+N/-S (ft)	+E/-W (ft)	Dogleg Rate (°/100ft)	Build Rate (°/100ft)	Turn Rate (°/100ft)	TFO (°)	Target
0.0	0.00	0.00	0.0	0.0	0.0	0.00	0.00	0.00	0.00	
500.0	0.00	0.00	500.0	0.0	0.0	0.00	0.00	0.00	0.00	
1,206.6	24.73	158.51	1,184.9	-139.7	55.0	3.50	3.50	0.00	158.51	
6,616.9	24.73	158.51	6,098.9	-2,245.9	884.1	0.00	0.00	0.00	0.00	
7,353.5	10.00	158.51	6,800.0	-2,449.9	964.4	2.00	-2.00	0.00	180.00	DRILL TARGET B-
7,825.7	10.00	158.51	7,265.0	-2,526.2	994.4	0.00	0.00	0.00	0.00	

Database:	EDM den0-adp01 Server Data	Local Co-ordinate Reference:	Well COLE X-6 4-8-31
Company:	Mineral Resources Inc	TVD Reference:	WELL @ 4673.0ft (Original Well Elev)
Project:	SEC.31-T5N-R65W	MD Reference:	WELL @ 4673.0ft (Original Well Elev)
Site:	PAD X SEC.31-T5N-R65W	North Reference:	True
Well:	COLE X-6 4-8-31	Survey Calculation Method:	Minimum Curvature
Wellbore:	Wellbore #1		
Design:	Plan #7 (3-29-10)		

Planned Survey									
Measured Depth (ft)	Inclination (°)	Azimuth (°)	Vertical Depth (ft)	+N/-S (ft)	+E/-W (ft)	Vertical Section (ft)	Dogleg Rate (°/100ft)	Build Rate (°/100ft)	Turn Rate (°/100ft)
0.0	0.00	0.00	0.0	0.0	0.0	0.0	0.00	0.00	0.00
40.0	0.00	0.00	40.0	0.0	0.0	0.0	0.00	0.00	0.00
80.0	0.00	0.00	80.0	0.0	0.0	0.0	0.00	0.00	0.00
120.0	0.00	0.00	120.0	0.0	0.0	0.0	0.00	0.00	0.00
160.0	0.00	0.00	160.0	0.0	0.0	0.0	0.00	0.00	0.00
200.0	0.00	0.00	200.0	0.0	0.0	0.0	0.00	0.00	0.00
240.0	0.00	0.00	240.0	0.0	0.0	0.0	0.00	0.00	0.00
280.0	0.00	0.00	280.0	0.0	0.0	0.0	0.00	0.00	0.00
320.0	0.00	0.00	320.0	0.0	0.0	0.0	0.00	0.00	0.00
360.0	0.00	0.00	360.0	0.0	0.0	0.0	0.00	0.00	0.00
400.0	0.00	0.00	400.0	0.0	0.0	0.0	0.00	0.00	0.00
440.0	0.00	0.00	440.0	0.0	0.0	0.0	0.00	0.00	0.00
480.0	0.00	0.00	480.0	0.0	0.0	0.0	0.00	0.00	0.00
500.0	0.00	0.00	500.0	0.0	0.0	0.0	0.00	0.00	0.00
520.0	0.70	158.51	520.0	-0.1	0.0	0.1	3.50	3.50	0.00
560.0	2.10	158.51	560.0	-1.0	0.4	1.1	3.50	3.50	0.00
600.0	3.50	158.51	599.9	-2.8	1.1	3.1	3.50	3.50	0.00
640.0	4.90	158.51	639.8	-5.6	2.2	6.0	3.50	3.50	0.00
680.0	6.30	158.51	679.6	-9.2	3.6	9.9	3.50	3.50	0.00
720.0	7.70	158.51	719.3	-13.7	5.4	14.8	3.50	3.50	0.00
760.0	9.10	158.51	758.9	-19.2	7.5	20.6	3.50	3.50	0.00
800.0	10.50	158.51	798.3	-25.5	10.0	27.4	3.50	3.50	0.00
840.0	11.90	158.51	837.6	-32.7	12.9	35.2	3.50	3.50	0.00
880.0	13.30	158.51	876.6	-40.9	16.1	43.9	3.50	3.50	0.00
920.0	14.70	158.51	915.4	-49.9	19.6	53.6	3.50	3.50	0.00
960.0	16.10	158.51	954.0	-59.7	23.5	64.2	3.50	3.50	0.00
1,000.0	17.50	158.51	992.3	-70.5	27.8	75.8	3.50	3.50	0.00
1,040.0	18.90	158.51	1,030.3	-82.1	32.3	88.3	3.50	3.50	0.00
1,080.0	20.30	158.51	1,067.9	-94.6	37.2	101.7	3.50	3.50	0.00
1,092.9	20.75	158.51	1,080.0	-98.8	38.9	106.2	3.50	3.50	0.00
8 5/8"									
1,120.0	21.70	158.51	1,105.3	-107.9	42.5	116.0	3.50	3.50	0.00
1,160.0	23.10	158.51	1,142.3	-122.1	48.1	131.3	3.50	3.50	0.00
1,200.0	24.50	158.51	1,178.9	-137.2	54.0	147.4	3.50	3.50	0.00
1,206.6	24.73	158.51	1,184.9	-139.7	55.0	150.2	3.50	3.50	0.00
1,240.0	24.73	158.51	1,215.2	-152.7	60.1	164.1	0.00	0.00	0.00
1,280.0	24.73	158.51	1,251.5	-168.3	66.2	180.9	0.00	0.00	0.00
1,320.0	24.73	158.51	1,287.9	-183.9	72.4	197.6	0.00	0.00	0.00
1,360.0	24.73	158.51	1,324.2	-199.4	78.5	214.3	0.00	0.00	0.00
1,400.0	24.73	158.51	1,360.5	-215.0	84.6	231.1	0.00	0.00	0.00
1,440.0	24.73	158.51	1,396.9	-230.6	90.8	247.8	0.00	0.00	0.00
1,480.0	24.73	158.51	1,433.2	-246.1	96.9	264.5	0.00	0.00	0.00
1,520.0	24.73	158.51	1,469.5	-261.7	103.0	281.3	0.00	0.00	0.00
1,560.0	24.73	158.51	1,505.8	-277.3	109.2	298.0	0.00	0.00	0.00
1,600.0	24.73	158.51	1,542.2	-292.9	115.3	314.7	0.00	0.00	0.00
1,640.0	24.73	158.51	1,578.5	-308.4	121.4	331.5	0.00	0.00	0.00
1,680.0	24.73	158.51	1,614.8	-324.0	127.5	348.2	0.00	0.00	0.00
1,720.0	24.73	158.51	1,651.2	-339.6	133.7	364.9	0.00	0.00	0.00
1,760.0	24.73	158.51	1,687.5	-355.1	139.8	381.7	0.00	0.00	0.00
1,800.0	24.73	158.51	1,723.8	-370.7	145.9	398.4	0.00	0.00	0.00
1,840.0	24.73	158.51	1,760.2	-386.3	152.1	415.1	0.00	0.00	0.00
1,880.0	24.73	158.51	1,796.5	-401.9	158.2	431.9	0.00	0.00	0.00
1,920.0	24.73	158.51	1,832.8	-417.4	164.3	448.6	0.00	0.00	0.00
1,960.0	24.73	158.51	1,869.2	-433.0	170.5	465.3	0.00	0.00	0.00

Database:	EDM den0-adp01 Server Data	Local Co-ordinate Reference:	Well COLE X-6 4-8-31
Company:	Mineral Resources Inc	TVD Reference:	WELL @ 4673.0ft (Original Well Elev)
Project:	SEC.31-T5N-R65W	MD Reference:	WELL @ 4673.0ft (Original Well Elev)
Site:	PAD X SEC.31-T5N-R65W	North Reference:	True
Well:	COLE X-6 4-8-31	Survey Calculation Method:	Minimum Curvature
Wellbore:	Wellbore #1		
Design:	Plan #7 (3-29-10)		

Planned Survey									
Measured Depth (ft)	Inclination (°)	Azimuth (°)	Vertical Depth (ft)	+N/-S (ft)	+E/-W (ft)	Vertical Section (ft)	Dogleg Rate (°/100ft)	Build Rate (°/100ft)	Turn Rate (°/100ft)
2,000.0	24.73	158.51	1,905.5	-448.6	176.6	482.1	0.00	0.00	0.00
2,040.0	24.73	158.51	1,941.8	-464.1	182.7	498.8	0.00	0.00	0.00
2,080.0	24.73	158.51	1,978.2	-479.7	188.8	515.5	0.00	0.00	0.00
2,120.0	24.73	158.51	2,014.5	-495.3	195.0	532.3	0.00	0.00	0.00
2,160.0	24.73	158.51	2,050.8	-510.9	201.1	549.0	0.00	0.00	0.00
2,200.0	24.73	158.51	2,087.1	-526.4	207.2	565.8	0.00	0.00	0.00
2,240.0	24.73	158.51	2,123.5	-542.0	213.4	582.5	0.00	0.00	0.00
2,280.0	24.73	158.51	2,159.8	-557.6	219.5	599.2	0.00	0.00	0.00
2,320.0	24.73	158.51	2,196.1	-573.1	225.6	616.0	0.00	0.00	0.00
2,360.0	24.73	158.51	2,232.5	-588.7	231.7	632.7	0.00	0.00	0.00
2,400.0	24.73	158.51	2,268.8	-604.3	237.9	649.4	0.00	0.00	0.00
2,440.0	24.73	158.51	2,305.1	-619.9	244.0	666.2	0.00	0.00	0.00
2,480.0	24.73	158.51	2,341.5	-635.4	250.1	682.9	0.00	0.00	0.00
2,520.0	24.73	158.51	2,377.8	-651.0	256.3	699.6	0.00	0.00	0.00
2,560.0	24.73	158.51	2,414.1	-666.6	262.4	716.4	0.00	0.00	0.00
2,600.0	24.73	158.51	2,450.5	-682.1	268.5	733.1	0.00	0.00	0.00
2,640.0	24.73	158.51	2,486.8	-697.7	274.7	749.8	0.00	0.00	0.00
2,680.0	24.73	158.51	2,523.1	-713.3	280.8	766.6	0.00	0.00	0.00
2,720.0	24.73	158.51	2,559.5	-728.9	286.9	783.3	0.00	0.00	0.00
2,760.0	24.73	158.51	2,595.8	-744.4	293.0	800.0	0.00	0.00	0.00
2,800.0	24.73	158.51	2,632.1	-760.0	299.2	816.8	0.00	0.00	0.00
2,840.0	24.73	158.51	2,668.4	-775.6	305.3	833.5	0.00	0.00	0.00
2,880.0	24.73	158.51	2,704.8	-791.1	311.4	850.2	0.00	0.00	0.00
2,920.0	24.73	158.51	2,741.1	-806.7	317.6	867.0	0.00	0.00	0.00
2,960.0	24.73	158.51	2,777.4	-822.3	323.7	883.7	0.00	0.00	0.00
3,000.0	24.73	158.51	2,813.8	-837.9	329.8	900.4	0.00	0.00	0.00
3,040.0	24.73	158.51	2,850.1	-853.4	336.0	917.2	0.00	0.00	0.00
3,080.0	24.73	158.51	2,886.4	-869.0	342.1	933.9	0.00	0.00	0.00
3,120.0	24.73	158.51	2,922.8	-884.6	348.2	950.6	0.00	0.00	0.00
3,160.0	24.73	158.51	2,959.1	-900.2	354.3	967.4	0.00	0.00	0.00
3,200.0	24.73	158.51	2,995.4	-915.7	360.5	984.1	0.00	0.00	0.00
3,240.0	24.73	158.51	3,031.8	-931.3	366.6	1,000.9	0.00	0.00	0.00
3,280.0	24.73	158.51	3,068.1	-946.9	372.7	1,017.6	0.00	0.00	0.00
3,320.0	24.73	158.51	3,104.4	-962.4	378.9	1,034.3	0.00	0.00	0.00
3,360.0	24.73	158.51	3,140.7	-978.0	385.0	1,051.1	0.00	0.00	0.00
3,400.0	24.73	158.51	3,177.1	-993.6	391.1	1,067.8	0.00	0.00	0.00
3,440.0	24.73	158.51	3,213.4	-1,009.2	397.3	1,084.5	0.00	0.00	0.00
3,480.0	24.73	158.51	3,249.7	-1,024.7	403.4	1,101.3	0.00	0.00	0.00
3,520.0	24.73	158.51	3,286.1	-1,040.3	409.5	1,118.0	0.00	0.00	0.00
3,560.0	24.73	158.51	3,322.4	-1,055.9	415.6	1,134.7	0.00	0.00	0.00
3,600.0	24.73	158.51	3,358.7	-1,071.4	421.8	1,151.5	0.00	0.00	0.00
3,640.0	24.73	158.51	3,395.1	-1,087.0	427.9	1,168.2	0.00	0.00	0.00
3,680.0	24.73	158.51	3,431.4	-1,102.6	434.0	1,184.9	0.00	0.00	0.00
3,720.0	24.73	158.51	3,467.7	-1,118.2	440.2	1,201.7	0.00	0.00	0.00
3,760.0	24.73	158.51	3,504.1	-1,133.7	446.3	1,218.4	0.00	0.00	0.00
3,800.0	24.73	158.51	3,540.4	-1,149.3	452.4	1,235.1	0.00	0.00	0.00
3,840.0	24.73	158.51	3,576.7	-1,164.9	458.5	1,251.9	0.00	0.00	0.00
3,880.0	24.73	158.51	3,613.1	-1,180.4	464.7	1,268.6	0.00	0.00	0.00
3,920.0	24.73	158.51	3,649.4	-1,196.0	470.8	1,285.3	0.00	0.00	0.00
3,960.0	24.73	158.51	3,685.7	-1,211.6	476.9	1,302.1	0.00	0.00	0.00
4,000.0	24.73	158.51	3,722.0	-1,227.2	483.1	1,318.8	0.00	0.00	0.00
4,040.0	24.73	158.51	3,758.4	-1,242.7	489.2	1,335.5	0.00	0.00	0.00
4,080.0	24.73	158.51	3,794.7	-1,258.3	495.3	1,352.3	0.00	0.00	0.00
4,120.0	24.73	158.51	3,831.0	-1,273.9	501.5	1,369.0	0.00	0.00	0.00

Database:	EDM den0-adp01 Server Data	Local Co-ordinate Reference:	Well COLE X-6 4-8-31
Company:	Mineral Resources Inc	TVD Reference:	WELL @ 4673.0ft (Original Well Elev)
Project:	SEC.31-T5N-R65W	MD Reference:	WELL @ 4673.0ft (Original Well Elev)
Site:	PAD X SEC.31-T5N-R65W	North Reference:	True
Well:	COLE X-6 4-8-31	Survey Calculation Method:	Minimum Curvature
Wellbore:	Wellbore #1		
Design:	Plan #7 (3-29-10)		

Planned Survey									
Measured Depth (ft)	Inclination (°)	Azimuth (°)	Vertical Depth (ft)	+N/-S (ft)	+E/-W (ft)	Vertical Section (ft)	Dogleg Rate (°/100ft)	Build Rate (°/100ft)	Turn Rate (°/100ft)
4,160.0	24.73	158.51	3,867.4	-1,289.4	507.6	1,385.7	0.00	0.00	0.00
4,200.0	24.73	158.51	3,903.7	-1,305.0	513.7	1,402.5	0.00	0.00	0.00
4,240.0	24.73	158.51	3,940.0	-1,320.6	519.8	1,419.2	0.00	0.00	0.00
4,280.0	24.73	158.51	3,976.4	-1,336.2	526.0	1,436.0	0.00	0.00	0.00
4,320.0	24.73	158.51	4,012.7	-1,351.7	532.1	1,452.7	0.00	0.00	0.00
4,360.0	24.73	158.51	4,049.0	-1,367.3	538.2	1,469.4	0.00	0.00	0.00
4,400.0	24.73	158.51	4,085.4	-1,382.9	544.4	1,486.2	0.00	0.00	0.00
4,440.0	24.73	158.51	4,121.7	-1,398.4	550.5	1,502.9	0.00	0.00	0.00
4,480.0	24.73	158.51	4,158.0	-1,414.0	556.6	1,519.6	0.00	0.00	0.00
4,520.0	24.73	158.51	4,194.4	-1,429.6	562.8	1,536.4	0.00	0.00	0.00
4,560.0	24.73	158.51	4,230.7	-1,445.2	568.9	1,553.1	0.00	0.00	0.00
4,600.0	24.73	158.51	4,267.0	-1,460.7	575.0	1,569.8	0.00	0.00	0.00
4,640.0	24.73	158.51	4,303.3	-1,476.3	581.1	1,586.6	0.00	0.00	0.00
4,680.0	24.73	158.51	4,339.7	-1,491.9	587.3	1,603.3	0.00	0.00	0.00
4,720.0	24.73	158.51	4,376.0	-1,507.4	593.4	1,620.0	0.00	0.00	0.00
4,760.0	24.73	158.51	4,412.3	-1,523.0	599.5	1,636.8	0.00	0.00	0.00
4,800.0	24.73	158.51	4,448.7	-1,538.6	605.7	1,653.5	0.00	0.00	0.00
4,840.0	24.73	158.51	4,485.0	-1,554.2	611.8	1,670.2	0.00	0.00	0.00
4,880.0	24.73	158.51	4,521.3	-1,569.7	617.9	1,687.0	0.00	0.00	0.00
4,920.0	24.73	158.51	4,557.7	-1,585.3	624.1	1,703.7	0.00	0.00	0.00
4,960.0	24.73	158.51	4,594.0	-1,600.9	630.2	1,720.4	0.00	0.00	0.00
5,000.0	24.73	158.51	4,630.3	-1,616.4	636.3	1,737.2	0.00	0.00	0.00
5,040.0	24.73	158.51	4,666.7	-1,632.0	642.4	1,753.9	0.00	0.00	0.00
5,080.0	24.73	158.51	4,703.0	-1,647.6	648.6	1,770.6	0.00	0.00	0.00
5,120.0	24.73	158.51	4,739.3	-1,663.2	654.7	1,787.4	0.00	0.00	0.00
5,160.0	24.73	158.51	4,775.6	-1,678.7	660.8	1,804.1	0.00	0.00	0.00
5,200.0	24.73	158.51	4,812.0	-1,694.3	667.0	1,820.9	0.00	0.00	0.00
5,240.0	24.73	158.51	4,848.3	-1,709.9	673.1	1,837.6	0.00	0.00	0.00
5,280.0	24.73	158.51	4,884.6	-1,725.4	679.2	1,854.3	0.00	0.00	0.00
5,320.0	24.73	158.51	4,921.0	-1,741.0	685.3	1,871.1	0.00	0.00	0.00
5,360.0	24.73	158.51	4,957.3	-1,756.6	691.5	1,887.8	0.00	0.00	0.00
5,400.0	24.73	158.51	4,993.6	-1,772.2	697.6	1,904.5	0.00	0.00	0.00
5,440.0	24.73	158.51	5,030.0	-1,787.7	703.7	1,921.3	0.00	0.00	0.00
5,480.0	24.73	158.51	5,066.3	-1,803.3	709.9	1,938.0	0.00	0.00	0.00
5,520.0	24.73	158.51	5,102.6	-1,818.9	716.0	1,954.7	0.00	0.00	0.00
5,560.0	24.73	158.51	5,139.0	-1,834.4	722.1	1,971.5	0.00	0.00	0.00
5,600.0	24.73	158.51	5,175.3	-1,850.0	728.3	1,988.2	0.00	0.00	0.00
5,640.0	24.73	158.51	5,211.6	-1,865.6	734.4	2,004.9	0.00	0.00	0.00
5,680.0	24.73	158.51	5,248.0	-1,881.2	740.5	2,021.7	0.00	0.00	0.00
5,720.0	24.73	158.51	5,284.3	-1,896.7	746.6	2,038.4	0.00	0.00	0.00
5,760.0	24.73	158.51	5,320.6	-1,912.3	752.8	2,055.1	0.00	0.00	0.00
5,800.0	24.73	158.51	5,356.9	-1,927.9	758.9	2,071.9	0.00	0.00	0.00
5,840.0	24.73	158.51	5,393.3	-1,943.4	765.0	2,088.6	0.00	0.00	0.00
5,880.0	24.73	158.51	5,429.6	-1,959.0	771.2	2,105.3	0.00	0.00	0.00
5,920.0	24.73	158.51	5,465.9	-1,974.6	777.3	2,122.1	0.00	0.00	0.00
5,960.0	24.73	158.51	5,502.3	-1,990.2	783.4	2,138.8	0.00	0.00	0.00
6,000.0	24.73	158.51	5,538.6	-2,005.7	789.6	2,155.5	0.00	0.00	0.00
6,040.0	24.73	158.51	5,574.9	-2,021.3	795.7	2,172.3	0.00	0.00	0.00
6,080.0	24.73	158.51	5,611.3	-2,036.9	801.8	2,189.0	0.00	0.00	0.00
6,120.0	24.73	158.51	5,647.6	-2,052.5	807.9	2,205.7	0.00	0.00	0.00
6,160.0	24.73	158.51	5,683.9	-2,068.0	814.1	2,222.5	0.00	0.00	0.00
6,200.0	24.73	158.51	5,720.3	-2,083.6	820.2	2,239.2	0.00	0.00	0.00
6,240.0	24.73	158.51	5,756.6	-2,099.2	826.3	2,256.0	0.00	0.00	0.00
6,280.0	24.73	158.51	5,792.9	-2,114.7	832.5	2,272.7	0.00	0.00	0.00

Database:	EDM den0-adp01 Server Data	Local Co-ordinate Reference:	Well COLE X-6 4-8-31
Company:	Mineral Resources Inc	TVD Reference:	WELL @ 4673.0ft (Original Well Elev)
Project:	SEC.31-T5N-R65W	MD Reference:	WELL @ 4673.0ft (Original Well Elev)
Site:	PAD X SEC.31-T5N-R65W	North Reference:	True
Well:	COLE X-6 4-8-31	Survey Calculation Method:	Minimum Curvature
Wellbore:	Wellbore #1		
Design:	Plan #7 (3-29-10)		

Planned Survey

Measured Depth (ft)	Inclination (°)	Azimuth (°)	Vertical Depth (ft)	+N-S (ft)	+E-W (ft)	Vertical Section (ft)	Dogleg Rate (°/100ft)	Build Rate (°/100ft)	Turn Rate (°/100ft)
6,320.0	24.73	158.51	5,829.3	-2,130.3	838.6	2,289.4	0.00	0.00	0.00
6,360.0	24.73	158.51	5,865.6	-2,145.9	844.7	2,306.2	0.00	0.00	0.00
6,400.0	24.73	158.51	5,901.9	-2,161.5	850.9	2,322.9	0.00	0.00	0.00
6,440.0	24.73	158.51	5,938.2	-2,177.0	857.0	2,339.6	0.00	0.00	0.00
6,480.0	24.73	158.51	5,974.6	-2,192.6	863.1	2,356.4	0.00	0.00	0.00
6,520.0	24.73	158.51	6,010.9	-2,208.2	869.2	2,373.1	0.00	0.00	0.00
6,560.0	24.73	158.51	6,047.2	-2,223.7	875.4	2,389.8	0.00	0.00	0.00
6,600.0	24.73	158.51	6,083.6	-2,239.3	881.5	2,406.6	0.00	0.00	0.00
6,616.9	24.73	158.51	6,098.9	-2,245.9	884.1	2,413.6	0.00	0.00	0.00
6,640.0	24.27	158.51	6,119.9	-2,254.8	887.6	2,423.2	2.00	-2.00	0.00
6,680.0	23.47	158.51	6,156.5	-2,269.9	893.5	2,439.4	2.00	-2.00	0.00
6,720.0	22.67	158.51	6,193.3	-2,284.4	899.3	2,455.1	2.00	-2.00	0.00
6,760.0	21.87	158.51	6,230.3	-2,298.6	904.8	2,470.2	2.00	-2.00	0.00
6,800.0	21.07	158.51	6,267.6	-2,312.2	910.2	2,484.9	2.00	-2.00	0.00
6,840.0	20.27	158.51	6,305.0	-2,325.3	915.4	2,499.0	2.00	-2.00	0.00
6,880.0	19.47	158.51	6,342.6	-2,338.0	920.3	2,512.6	2.00	-2.00	0.00
6,920.0	18.67	158.51	6,380.4	-2,350.1	925.1	2,525.7	2.00	-2.00	0.00
6,960.0	17.87	158.51	6,418.4	-2,361.8	929.7	2,538.2	2.00	-2.00	0.00
7,000.0	17.07	158.51	6,456.5	-2,373.0	934.1	2,550.2	2.00	-2.00	0.00
7,040.0	16.27	158.51	6,494.9	-2,383.6	938.3	2,561.7	2.00	-2.00	0.00
7,080.0	15.47	158.51	6,533.3	-2,393.8	942.3	2,572.6	2.00	-2.00	0.00
7,120.0	14.67	158.51	6,572.0	-2,403.5	946.1	2,583.0	2.00	-2.00	0.00
7,160.0	13.87	158.51	6,610.7	-2,412.7	949.7	2,592.9	2.00	-2.00	0.00
7,200.0	13.07	158.51	6,649.6	-2,421.3	953.2	2,602.2	2.00	-2.00	0.00
7,240.0	12.27	158.51	6,688.7	-2,429.5	956.4	2,611.0	2.00	-2.00	0.00
7,280.0	11.47	158.51	6,727.8	-2,437.2	959.4	2,619.2	2.00	-2.00	0.00
7,302.6	11.02	158.51	6,750.0	-2,441.3	961.0	2,623.6	2.00	-2.00	0.00
NIOBRARA									
7,320.0	10.67	158.51	6,767.1	-2,444.3	962.2	2,626.9	2.00	-2.00	0.00
7,353.5	10.00	158.51	6,800.0	-2,449.9	964.4	2,632.9	2.00	-2.00	0.00
DRILL TARGET BHL 151°FSL, 2558°FEL									
7,356.1	10.00	158.51	6,802.6	-2,450.3	964.6	2,633.3	0.00	0.00	0.00
PERMIT TARGET BHL 135°FSL & 2558°FEL									
7,360.0	10.00	158.51	6,806.4	-2,451.0	964.8	2,634.0	0.00	0.00	0.00
7,400.0	10.00	158.51	6,845.8	-2,457.4	967.4	2,641.0	0.00	0.00	0.00
7,440.0	10.00	158.51	6,885.2	-2,463.9	969.9	2,647.9	0.00	0.00	0.00
7,480.0	10.00	158.51	6,924.6	-2,470.3	972.4	2,654.9	0.00	0.00	0.00
7,520.0	10.00	158.51	6,964.0	-2,476.8	975.0	2,661.8	0.00	0.00	0.00
7,560.0	10.00	158.51	7,003.4	-2,483.3	977.5	2,668.7	0.00	0.00	0.00
7,600.0	10.00	158.51	7,042.8	-2,489.7	980.1	2,675.7	0.00	0.00	0.00
7,640.0	10.00	158.51	7,082.2	-2,496.2	982.6	2,682.6	0.00	0.00	0.00
7,673.4	10.00	158.51	7,115.0	-2,501.6	984.7	2,688.4	0.00	0.00	0.00
CODELL									
7,680.0	10.00	158.51	7,121.5	-2,502.7	985.2	2,689.6	0.00	0.00	0.00
7,720.0	10.00	158.51	7,160.9	-2,509.1	987.7	2,696.5	0.00	0.00	0.00
7,760.0	10.00	158.51	7,200.3	-2,515.6	990.3	2,703.5	0.00	0.00	0.00
7,800.0	10.00	158.51	7,239.7	-2,522.0	992.8	2,710.4	0.00	0.00	0.00
7,825.7	10.00	158.51	7,265.0	-2,526.2	994.4	2,714.9	0.00	0.00	0.00
HARDLINE 75°S & 106°W OF COLE X-6 BHL									

Database:	EDM den0-adp01 Server Data	Local Co-ordinate Reference:	Well COLE X-6 4-8-31
Company:	Mineral Resources Inc	TVD Reference:	WELL @ 4673.0ft (Original Well Elev)
Project:	SEC.31-T5N-R65W	MD Reference:	WELL @ 4673.0ft (Original Well Elev)
Site:	PAD X SEC.31-T5N-R65W	North Reference:	True
Well:	COLE X-6 4-8-31	Survey Calculation Method:	Minimum Curvature
Wellbore:	Wellbore #1		
Design:	Plan #7 (3-29-10)		

Targets									
Target Name									
- hit/miss target	Dip Angle	Dip Dir.	TVD	+N/-S	+E/-W	Northing	Easting	Latitude	Longitude
- Shape	(°)	(°)	(ft)	(ft)	(ft)	(ft)	(ft)		
PERMIT TARGET BH	0.00	0.00	6,800.0	-2,466.3	964.4	1,370,917.51	3,221,303.90	40° 20' 55.860 N	104° 42' 21.564 W
- plan misses target center by 16.2ft at 7356.1ft MD (6802.6 TVD, -2450.3 N, 964.6 E)									
- Point									
HARDLINE 75'S & 10	0.00	0.00	7,265.0	-2,601.3	887.4	1,370,781.88	3,221,228.09	40° 20' 54.526 N	104° 42' 22.559 W
- plan misses target center by 130.8ft at 7825.7ft MD (7265.0 TVD, -2526.2 N, 994.4 E)									
- Polygon									
Point 1			7,265.0	0.0	0.0	1,370,781.88	3,221,228.09		
Point 2			7,265.0	0.0	300.0	1,370,784.56	3,221,528.07		
Point 3			7,265.0	0.0	0.0	1,370,781.88	3,221,228.09		
Point 4			7,265.0	300.0	0.0	1,371,081.86	3,221,225.42		
DRILL TARGET BHL	0.00	0.00	6,800.0	-2,449.9	964.4	1,370,933.95	3,221,303.74	40° 20' 56.022 N	104° 42' 21.564 W
- plan hits target center									
- Point									

Casing Points					
	Measured Depth	Vertical Depth		Casing Diameter	Hole Diameter
	(ft)	(ft)	Name	(")	(")
	1,092.9	1,080.0	8 5/8"	8-5/8	12-1/4

Formations						
	Measured Depth	Vertical Depth			Dip	Dip Direction
	(ft)	(ft)	Name	Lithology	(°)	(°)
	7,302.6	6,750.0	NIOBRARA		0.00	
	7,673.4	7,115.0	CODELL		0.00	



Mineral Resources Inc

SEC.31-T5N-R65W

PAD X SEC.31-T5N-R65W

COLE X-6 4-8-31

Wellbore #1

Plan #7 (3-29-10)

Anticollision Report

01 April, 2010

Company:	Mineral Resources Inc	Local Co-ordinate Reference:	Well COLE X-6 4-8-31
Project:	SEC.31-T5N-R65W	TVD Reference:	WELL @ 4673.0ft (Original Well Elev)
Reference Site:	PAD X SEC.31-T5N-R65W	MD Reference:	WELL @ 4673.0ft (Original Well Elev)
Site Error:	0.0ft	North Reference:	True
Reference Well:	COLE X-6 4-8-31	Survey Calculation Method:	Minimum Curvature
Well Error:	0.0ft	Output errors are at	2.00 sigma
Reference Wellbore	Wellbore #1	Database:	EDM den0-adp01 Server Data
Reference Design:	Plan #7 (3-29-10)	Offset TVD Reference:	Offset Datum

Reference	Plan #7 (3-29-10)		
Filter type:	NO GLOBAL FILTER: Using user defined selection & filtering criteria		
Interpolation Method:	MD Interval 100.0ft	Error Model:	ISCSWA
Depth Range:	Unlimited	Scan Method:	Closest Approach 3D
Results Limited by:	Maximum center-center distance of 2,000.0ft	Error Surface:	Elliptical Conic
Warning Levels Evaluated at:	2.00 Sigma		

Survey Tool Program		Date	4/1/2010		
From (ft)	To (ft)	Survey (Wellbore)	Tool Name	Description	
0.0	7,825.7	Plan #7 (3-29-10) (Wellbore #1)	MWD	MWD - Standard	

Summary							
Site Name	Reference Measured Depth (ft)	Offset Measured Depth (ft)	Distance Between Centres (ft)	Distance Between Ellipses (ft)	Separation Factor	Warning	
Offset Well - Wellbore - Design							
PAD X SEC.31-T5N-R65W							
RE-1 X-7 4-6-31 - Wellbore #1 - Plan #5 (3-29-10)	500.0	500.0	32.5	30.5	16.090	CC	
RE-1 X-7 4-6-31 - Wellbore #1 - Plan #5 (3-29-10)	600.0	599.9	32.8	30.3	13.405	ES	
RE-1 X-7 4-6-31 - Wellbore #1 - Plan #5 (3-29-10)	700.0	699.5	35.1	32.3	12.247	SF	
SUNSET X-2 2-0-6 - Wellbore #1 - Plan #7 (3-29-10)	316.7	316.7	14.0	12.8	11.859	CC, ES	
SUNSET X-2 2-0-6 - Wellbore #1 - Plan #7 (3-29-10)	400.0	399.6	15.6	14.1	10.095	SF	
VALLEY PACK X-5 3-5-31 - Wellbore #1 - Design #1	544.8	544.8	48.2	46.0	21.766	CC	
VALLEY PACK X-5 3-5-31 - Wellbore #1 - Design #1	600.0	599.9	48.2	45.8	19.716	ES	
VALLEY PACK X-5 3-5-31 - Wellbore #1 - Design #1	800.0	798.3	55.1	51.8	16.528	SF	
PAD Z SEC.31-T5N-R65W							
PERCY Z3 4-2-6 - Wellbore #1 - Plan #4 (3-29-10)	307.2	307.3	15.3	14.2	13.494	CC, ES	
PERCY Z3 4-2-6 - Wellbore #1 - Plan #4 (3-29-10)	400.0	399.4	17.6	16.1	11.272	SF	

Offset Design													Offset Site Error:		0.0 ft
Survey Program: 0-MWD													Offset Well Error:		0.0 ft
Reference		Offset		Semi Major Axis			Distance							Warning	
Measured Depth (ft)	Vertical Depth (ft)	Measured Depth (ft)	Vertical Depth (ft)	Reference (ft)	Offset (ft)	Highside Toolface (°)	Offset Wellbore Centre +N/-S (ft)	+E/-W (ft)	Between Centres (ft)	Between Ellipses (ft)	Minimum Separation (ft)	Separation Factor			
0.0	0.0	0.0	0.0	0.0	0.0	-109.63	-10.9	-30.7	32.5						
100.0	100.0	100.0	100.0	0.1	0.1	-109.63	-10.9	-30.7	32.5	32.3	0.22	144.812			
200.0	200.0	200.0	200.0	0.3	0.3	-109.63	-10.9	-30.7	32.5	31.9	0.67	48.271			
300.0	300.0	300.0	300.0	0.6	0.6	-109.63	-10.9	-30.7	32.5	31.4	1.12	28.962			
400.0	400.0	400.0	400.0	0.8	0.8	-109.63	-10.9	-30.7	32.5	31.0	1.57	20.687			
500.0	500.0	500.0	500.0	1.0	1.0	-109.63	-10.9	-30.7	32.5	30.5	2.02	16.090 CC			
504.1	504.1	504.1	504.1	1.0	1.0	91.87	-10.9	-30.7	32.5	30.5	2.04	15.953			
600.0	599.9	599.9	599.9	1.2	1.2	97.19	-10.9	-30.7	32.8	30.3	2.45	13.405 ES			
700.0	699.5	699.5	699.5	1.4	1.5	112.02	-10.9	-30.7	35.1	32.3	2.87	12.247 SF			
800.0	798.3	798.3	798.3	1.7	1.7	130.71	-10.9	-30.7	43.2	39.9	3.33	13.000			
900.0	896.0	896.0	896.0	2.0	1.9	145.99	-10.9	-30.7	59.4	55.6	3.79	15.683			
1,000.0	992.3	992.3	992.3	2.5	2.1	156.06	-10.9	-30.7	83.4	79.2	4.24	19.697			
1,100.0	1,086.7	1,086.7	1,086.7	3.0	2.3	162.39	-10.9	-30.7	114.5	109.8	4.68	24.486			
1,200.0	1,178.9	1,178.9	1,178.9	3.7	2.5	166.46	-10.9	-30.7	152.0	146.9	5.12	29.701			
1,300.0	1,269.7	1,274.7	1,274.7	4.5	2.7	169.45	-11.8	-30.2	192.1	186.5	5.58	34.439			
1,400.0	1,360.5	1,374.6	1,374.5	5.3	2.9	171.45	-15.6	-28.1	229.5	223.5	6.04	38.013			

CC - Min centre to center distance or convergent point, SF - min separation factor, ES - min ellipse separation

Company:	Mineral Resources Inc	Local Co-ordinate Reference:	Well COLE X-6 4-8-31
Project:	SEC.31-T5N-R65W	TVD Reference:	WELL @ 4673.0ft (Original Well Elev)
Reference Site:	PAD X SEC.31-T5N-R65W	MD Reference:	WELL @ 4673.0ft (Original Well Elev)
Site Error:	0.0ft	North Reference:	True
Reference Well:	COLE X-6 4-8-31	Survey Calculation Method:	Minimum Curvature
Well Error:	0.0ft	Output errors are at	2.00 sigma
Reference Wellbore	Wellbore #1	Database:	EDM den0-adp01 Server Data
Reference Design:	Plan #7 (3-29-10)	Offset TVD Reference:	Offset Datum

Offset Design		PAD X SEC.31-T5N-R65W - RE-1 X-7 4-6-31 - Wellbore #1 - Plan #5 (3-29-10)											Offset Site Error: 0.0 ft	
Survey Program: 0-MWD													Offset Well Error: 0.0 ft	
Reference		Offset		Semi Major Axis			Distance							Warning
Measured Depth (ft)	Vertical Depth (ft)	Measured Depth (ft)	Vertical Depth (ft)	Reference (ft)	Offset (ft)	Highside Toolface (°)	Offset Wellbore Centre +N/-S (ft)	+E/-W (ft)	Between Centres (ft)	Between Ellipses (ft)	Minimum Separation (ft)	Separation Factor		
1,500.0	1,451.4	1,477.3	1,476.8	6.1	3.1	172.89	-22.7	-24.2	263.7	257.2	6.51	40.486		
1,600.0	1,542.2	1,582.5	1,581.4	7.0	3.3	174.02	-33.3	-18.4	294.6	287.6	7.01	41.996		
1,700.0	1,633.0	1,690.2	1,687.8	7.8	3.6	174.97	-47.6	-10.6	322.0	314.4	7.54	42.708		
1,800.0	1,723.8	1,800.0	1,795.6	8.6	3.9	175.80	-65.9	-0.6	345.8	337.7	8.09	42.758		
1,900.0	1,814.7	1,911.8	1,904.5	9.5	4.3	176.57	-88.1	11.6	365.9	357.2	8.66	42.243		
2,000.0	1,905.5	2,025.1	2,013.7	10.3	4.7	177.31	-114.5	26.0	382.1	372.9	9.26	41.264		
2,100.0	1,996.3	2,139.7	2,123.0	11.2	5.3	178.04	-144.9	42.7	394.5	384.7	9.89	39.900		
2,200.0	2,087.1	2,255.3	2,231.6	12.0	5.9	178.79	-179.5	61.6	403.0	392.5	10.54	38.251		
2,300.0	2,178.0	2,364.8	2,333.1	12.8	6.6	179.53	-215.6	81.3	407.8	396.6	11.20	36.415		
2,400.0	2,268.8	2,464.6	2,425.3	13.7	7.3	-179.80	-249.1	99.6	412.0	400.2	11.86	34.747		
2,500.0	2,359.6	2,564.4	2,517.5	14.5	8.0	-179.14	-282.6	118.0	416.3	403.7	12.53	33.220		
2,600.0	2,450.5	2,664.2	2,609.7	15.4	8.7	-178.50	-316.1	136.3	420.5	407.3	13.22	31.817		
2,700.0	2,541.3	2,764.0	2,701.9	16.2	9.5	-177.86	-349.6	154.6	424.9	411.0	13.92	30.525		
2,800.0	2,632.1	2,863.8	2,794.1	17.1	10.2	-177.25	-383.1	172.9	429.3	414.6	14.63	29.333		
2,900.0	2,722.9	2,963.6	2,886.3	17.9	10.9	-176.64	-416.6	191.3	433.7	418.3	15.36	28.229		
3,000.0	2,813.8	3,063.4	2,978.5	18.8	11.7	-176.05	-450.0	209.6	438.2	422.1	16.11	27.205		
3,100.0	2,904.6	3,163.2	3,070.7	19.7	12.5	-175.47	-483.5	227.9	442.7	425.9	16.86	26.253		
3,200.0	2,995.4	3,263.0	3,162.9	20.5	13.2	-174.90	-517.0	246.2	447.3	429.7	17.63	25.366		
3,300.0	3,086.3	3,362.8	3,255.2	21.4	14.0	-174.34	-550.5	264.5	451.9	433.5	18.42	24.538		
3,400.0	3,177.1	3,462.6	3,347.4	22.2	14.7	-173.80	-584.0	282.9	456.6	437.4	19.21	23.763		
3,500.0	3,267.9	3,562.4	3,439.6	23.1	15.5	-173.26	-617.5	301.2	461.3	441.2	20.02	23.037		
3,600.0	3,358.7	3,662.2	3,531.8	23.9	16.3	-172.74	-651.0	319.5	466.0	445.2	20.85	22.355		
3,700.0	3,449.6	3,762.0	3,624.0	24.8	17.1	-172.22	-684.5	337.8	470.8	449.1	21.68	21.714		
3,800.0	3,540.4	3,861.8	3,716.2	25.6	17.8	-171.72	-718.0	356.2	475.6	453.1	22.53	21.110		
3,900.0	3,631.2	3,961.6	3,808.4	26.5	18.6	-171.23	-751.5	374.5	480.5	457.1	23.39	20.540		
4,000.0	3,722.0	4,061.4	3,900.6	27.3	19.4	-170.74	-785.0	392.8	485.3	461.1	24.26	20.002		
4,100.0	3,812.9	4,161.2	3,992.8	28.2	20.2	-170.27	-818.5	411.1	490.3	465.1	25.15	19.494		
4,200.0	3,903.7	4,261.0	4,085.0	29.0	21.0	-169.81	-852.0	429.5	495.2	469.2	26.05	19.013		
4,300.0	3,994.5	4,360.8	4,177.2	29.9	21.7	-169.35	-885.4	447.8	500.2	473.2	26.96	18.556		
4,400.0	4,085.4	4,460.6	4,269.4	30.8	22.5	-168.90	-918.9	466.1	505.2	477.3	27.88	18.124		
4,500.0	4,176.2	4,560.3	4,361.6	31.6	23.3	-168.47	-952.4	484.4	510.3	481.4	28.81	17.713		
4,600.0	4,267.0	4,660.1	4,453.8	32.5	24.1	-168.04	-985.9	502.7	515.3	485.6	29.75	17.322		
4,700.0	4,357.8	4,759.9	4,546.0	33.3	24.9	-167.62	-1,019.4	521.1	520.4	489.7	30.70	16.950		
4,800.0	4,448.7	4,859.7	4,638.3	34.2	25.7	-167.21	-1,052.9	539.4	525.6	493.9	31.67	16.597		
4,900.0	4,539.5	4,959.5	4,730.5	35.0	26.4	-166.80	-1,086.4	557.7	530.7	498.1	32.64	16.259		
5,000.0	4,630.3	5,059.3	4,822.7	35.9	27.2	-166.41	-1,119.9	576.0	535.9	502.3	33.63	15.937		
5,100.0	4,721.2	5,157.4	4,913.3	36.7	28.0	-166.02	-1,152.8	594.0	541.1	506.5	34.61	15.637		
5,200.0	4,812.0	5,242.1	4,992.1	37.6	28.5	-165.76	-1,179.9	608.9	548.1	512.6	35.45	15.461		
5,300.0	4,902.8	5,326.4	5,071.4	38.4	29.0	-165.59	-1,205.0	622.6	557.7	521.5	36.23	15.396		
5,400.0	4,993.6	5,410.2	5,151.1	39.3	29.4	-165.52	-1,227.8	635.1	570.2	533.2	36.95	15.431		
5,500.0	5,084.5	5,500.0	5,237.3	40.2	29.8	-165.55	-1,249.9	647.2	585.3	547.7	37.63	15.555		
5,600.0	5,175.3	5,575.9	5,310.7	41.0	30.1	-165.64	-1,266.8	656.4	603.0	564.8	38.21	15.780		
5,700.0	5,266.1	5,657.5	5,390.1	41.9	30.4	-165.82	-1,283.0	665.3	623.4	584.7	38.76	16.083		
5,800.0	5,356.9	5,738.0	5,469.1	42.7	30.7	-166.06	-1,297.1	673.0	646.4	607.1	39.26	16.463		
5,900.0	5,447.8	5,817.5	5,547.4	43.6	30.9	-166.35	-1,309.1	679.5	671.9	632.2	39.72	16.917		
6,000.0	5,538.6	5,900.0	5,629.0	44.4	31.2	-166.70	-1,319.5	685.2	700.0	659.9	40.14	17.440		
6,100.0	5,629.4	5,972.8	5,701.3	45.3	31.3	-167.04	-1,326.9	689.3	730.5	690.0	40.52	18.028		
6,200.0	5,720.3	6,048.4	5,776.6	46.1	31.5	-167.43	-1,333.0	692.6	763.5	722.6	40.88	18.676		
6,300.0	5,811.1	6,122.6	5,850.6	47.0	31.6	-167.83	-1,337.2	694.9	798.8	757.6	41.21	19.381		
6,400.0	5,901.9	6,200.0	5,928.0	47.9	31.7	-168.26	-1,339.8	696.4	836.4	794.9	41.53	20.141		
6,500.0	5,992.7	6,272.0	6,000.0	48.7	31.8	-168.68	-1,340.6	696.8	876.3	834.5	41.83	20.947		
6,600.0	6,083.6	6,355.6	6,083.6	49.6	31.8	-169.15	-1,340.6	696.8	917.5	875.3	42.13	21.779		

CC - Min centre to center distance or convergent point, SF - min separation factor, ES - min ellipse separation

Company:	Mineral Resources Inc	Local Co-ordinate Reference:	Well COLE X-6 4-8-31
Project:	SEC.31-T5N-R65W	TVD Reference:	WELL @ 4673.0ft (Original Well Elev)
Reference Site:	PAD X SEC.31-T5N-R65W	MD Reference:	WELL @ 4673.0ft (Original Well Elev)
Site Error:	0.0ft	North Reference:	True
Reference Well:	COLE X-6 4-8-31	Survey Calculation Method:	Minimum Curvature
Well Error:	0.0ft	Output errors are at	2.00 sigma
Reference Wellbore	Wellbore #1	Database:	EDM den0-adp01 Server Data
Reference Design:	Plan #7 (3-29-10)	Offset TVD Reference:	Offset Datum

Offset Design PAD X SEC.31-T5N-R65W - RE-1 X-7 4-6-31 - Wellbore #1 - Plan #5 (3-29-10)												Offset Site Error:	0.0 ft
Survey Program: 0-MWD												Offset Well Error:	0.0 ft
Reference		Offset		Semi Major Axis			Distance						Warning
Measured Depth (ft)	Vertical Depth (ft)	Measured Depth (ft)	Vertical Depth (ft)	Reference (ft)	Offset (ft)	Highside Toolface (°)	Offset Wellbore Centre +N/-S (ft)	+E/-W (ft)	Between Centres (ft)	Between Ellipses (ft)	Minimum Separation (ft)	Separation Factor	
6,700.0	6,174.9	6,446.9	6,174.9	50.3	31.9	-169.74	-1,340.6	696.8	957.6	915.2	42.42	22.572	
6,800.0	6,267.6	6,539.6	6,267.6	50.9	32.0	-170.26	-1,340.6	696.8	994.7	952.0	42.70	23.294	
6,900.0	6,361.5	6,633.5	6,361.5	51.4	32.1	-170.70	-1,340.6	696.8	1,028.6	985.6	42.97	23.940	
7,000.0	6,456.5	6,728.6	6,456.5	51.9	32.1	-171.07	-1,340.6	696.8	1,059.3	1,016.0	43.21	24.517	
7,100.0	6,552.6	6,824.7	6,552.6	52.3	32.2	-171.38	-1,340.6	696.8	1,086.6	1,043.2	43.42	25.029	
7,200.0	6,649.6	6,921.7	6,649.6	52.7	32.3	-171.64	-1,340.6	696.8	1,110.7	1,067.1	43.59	25.480	
7,300.0	6,747.4	7,019.4	6,747.4	53.0	32.4	-171.86	-1,340.6	696.8	1,131.4	1,087.7	43.73	25.874	
7,400.0	6,845.8	7,117.8	6,845.8	53.4	32.5	-172.01	-1,340.6	696.8	1,149.1	1,105.1	43.94	26.153	
7,500.0	6,944.3	7,216.3	6,944.3	53.7	32.6	-172.13	-1,340.6	696.8	1,166.3	1,122.0	44.28	26.340	
7,600.0	7,042.8	7,314.8	7,042.8	54.1	32.6	-172.25	-1,340.6	696.8	1,183.5	1,138.9	44.62	26.522	
7,700.0	7,141.2	7,413.3	7,141.2	54.5	32.7	-172.36	-1,340.6	696.8	1,200.7	1,155.7	44.97	26.699	
7,800.0	7,239.7	7,511.8	7,239.7	54.9	32.8	-172.47	-1,340.6	696.8	1,217.9	1,172.6	45.35	26.856	
7,825.7	7,265.0	7,537.0	7,265.0	55.0	32.8	-172.49	-1,340.6	696.8	1,222.3	1,176.8	45.50	26.865	

Company:	Mineral Resources Inc	Local Co-ordinate Reference:	Well COLE X-6 4-8-31
Project:	SEC.31-T5N-R65W	TVD Reference:	WELL @ 4673.0ft (Original Well Elev)
Reference Site:	PAD X SEC.31-T5N-R65W	MD Reference:	WELL @ 4673.0ft (Original Well Elev)
Site Error:	0.0ft	North Reference:	True
Reference Well:	COLE X-6 4-8-31	Survey Calculation Method:	Minimum Curvature
Well Error:	0.0ft	Output errors are at	2.00 sigma
Reference Wellbore	Wellbore #1	Database:	EDM den0-adp01 Server Data
Reference Design:	Plan #7 (3-29-10)	Offset TVD Reference:	Offset Datum

Offset Design PAD X SEC.31-T5N-R65W - SUNSET X-2 2-0-6 - Wellbore #1 - Plan #7 (3-29-10)													Offset Site Error: 0.0 ft	
Survey Program: 0-MWD													Offset Well Error: 0.0 ft	
Reference		Offset		Semi Major Axis			Distance						Warning	
Measured Depth (ft)	Vertical Depth (ft)	Measured Depth (ft)	Vertical Depth (ft)	Reference (ft)	Offset (ft)	Highside Toolface (°)	Offset Wellbore Centre +N/-S (ft)	+E/-W (ft)	Between Centres (ft)	Between Ellipses (ft)	Minimum Separation (ft)	Separation Factor		
0.0	0.0	0.0	0.0	0.0	0.0	-104.67	-3.6	-13.9	14.4	14.4	0.00	N/A		
100.0	100.0	100.0	100.0	0.1	0.1	-104.67	-3.6	-13.9	14.4	14.2	0.22	64.087		
200.0	200.0	200.0	200.0	0.3	0.3	-104.67	-3.6	-13.9	14.4	13.7	0.67	21.362		
300.0	300.0	300.1	300.0	0.6	0.5	-115.13	-5.9	-12.7	14.0	12.9	1.10	12.674		
316.7	316.7	316.7	316.7	0.6	0.6	-119.00	-6.8	-12.2	14.0	12.8	1.18	11.859 CC, ES		
400.0	400.0	399.6	399.2	0.8	0.8	-144.40	-12.7	-9.1	15.6	14.1	1.55	10.095 SF		
500.0	500.0	498.3	497.4	1.0	1.0	-165.62	-22.9	-5.9	23.8	21.7	2.02	11.742		
600.0	599.9	596.8	594.9	1.2	1.3	29.66	-36.2	-3.8	34.1	31.7	2.43	14.024		
700.0	699.5	695.1	691.8	1.4	1.7	31.10	-52.7	-2.9	42.7	39.8	2.86	14.921		
800.0	798.3	793.2	787.9	1.7	2.1	36.34	-72.2	-3.1	49.6	46.2	3.35	14.810		
900.0	896.0	890.9	883.0	2.0	2.5	44.22	-94.7	-4.4	55.8	51.8	3.97	14.065		
1,000.0	992.3	988.1	976.8	2.5	3.0	54.05	-120.1	-6.9	62.5	57.7	4.81	12.985		
1,100.0	1,086.7	1,084.8	1,069.2	3.0	3.5	64.87	-148.3	-10.4	71.1	65.2	5.96	11.932		
1,200.0	1,178.9	1,180.7	1,159.9	3.7	4.1	75.58	-179.2	-15.1	83.0	75.7	7.40	11.226		
1,300.0	1,269.7	1,276.0	1,249.0	4.5	4.8	84.30	-212.7	-20.7	99.4	90.4	8.95	11.103		
1,400.0	1,360.5	1,371.1	1,336.7	5.3	5.5	89.33	-248.9	-27.4	119.4	108.9	10.48	11.395		
1,500.0	1,451.4	1,465.7	1,422.7	6.1	6.2	91.87	-287.5	-35.0	142.0	130.0	12.01	11.826		
1,600.0	1,542.2	1,562.2	1,509.5	7.0	7.0	93.14	-328.8	-43.6	166.1	152.5	13.57	12.240		
1,700.0	1,633.0	1,659.2	1,596.7	7.8	7.8	94.07	-370.3	-52.1	190.2	175.1	15.14	12.564		
1,800.0	1,723.8	1,756.2	1,684.0	8.6	8.6	94.80	-411.7	-60.7	214.4	197.7	16.72	12.823		
1,900.0	1,814.7	1,853.2	1,771.2	9.5	9.5	95.38	-453.2	-69.3	238.6	220.3	18.31	13.035		
2,000.0	1,905.5	1,950.2	1,858.5	10.3	10.3	95.85	-494.7	-77.9	262.9	243.0	19.90	13.210		
2,100.0	1,996.3	2,047.2	1,945.8	11.2	11.1	96.24	-536.2	-86.5	287.1	265.6	21.49	13.358		
2,200.0	2,087.1	2,144.2	2,033.0	12.0	11.9	96.57	-577.7	-95.1	311.4	288.3	23.09	13.484		
2,300.0	2,178.0	2,241.2	2,120.3	12.8	12.7	96.86	-619.2	-103.7	335.6	310.9	24.69	13.593		
2,400.0	2,268.8	2,338.2	2,207.5	13.7	13.6	97.10	-660.7	-112.2	359.9	333.6	26.29	13.688		
2,500.0	2,359.6	2,435.2	2,294.8	14.5	14.4	97.32	-702.2	-120.8	384.2	356.3	27.90	13.771		
2,600.0	2,450.5	2,532.2	2,382.0	15.4	15.2	97.51	-743.7	-129.4	408.4	378.9	29.50	13.845		
2,700.0	2,541.3	2,629.2	2,469.3	16.2	16.0	97.67	-785.2	-138.0	432.7	401.6	31.11	13.911		
2,800.0	2,632.1	2,726.2	2,556.5	17.1	16.9	97.82	-826.7	-146.6	457.0	424.3	32.71	13.970		
2,900.0	2,722.9	2,823.2	2,643.8	17.9	17.7	97.96	-868.2	-155.2	481.3	447.0	34.32	14.023		
3,000.0	2,813.8	2,920.2	2,731.1	18.8	18.5	98.08	-909.7	-163.8	505.6	469.7	35.93	14.071		
3,100.0	2,904.6	3,017.2	2,818.3	19.7	19.4	98.19	-951.1	-172.3	529.9	492.3	37.54	14.115		
3,200.0	2,995.4	3,114.2	2,905.6	20.5	20.2	98.29	-992.6	-180.9	554.2	515.0	39.15	14.155		
3,300.0	3,086.3	3,211.2	2,992.8	21.4	21.0	98.38	-1,034.1	-189.5	578.5	537.7	40.76	14.192		
3,400.0	3,177.1	3,308.2	3,080.1	22.2	21.9	98.47	-1,075.6	-198.1	602.8	560.4	42.37	14.226		
3,500.0	3,267.9	3,405.2	3,167.3	23.1	22.7	98.55	-1,117.1	-206.7	627.1	583.1	43.98	14.257		
3,600.0	3,358.7	3,502.2	3,254.6	23.9	23.5	98.62	-1,158.6	-215.3	651.4	605.8	45.59	14.286		
3,700.0	3,449.6	3,599.2	3,341.9	24.8	24.3	98.69	-1,200.1	-223.9	675.7	628.5	47.21	14.313		
3,800.0	3,540.4	3,696.2	3,429.1	25.6	25.2	98.75	-1,241.6	-232.4	700.0	651.1	48.82	14.338		
3,900.0	3,631.2	3,793.2	3,516.4	26.5	26.0	98.81	-1,283.1	-241.0	724.3	673.8	50.43	14.362		
4,000.0	3,722.0	3,890.2	3,603.6	27.3	26.8	98.86	-1,324.6	-249.6	748.6	696.5	52.04	14.383		
4,100.0	3,812.9	3,987.2	3,690.9	28.2	27.7	98.91	-1,366.1	-258.2	772.9	719.2	53.66	14.404		
4,200.0	3,903.7	4,084.2	3,778.1	29.0	28.5	98.96	-1,407.6	-266.8	797.2	741.9	55.27	14.423		
4,300.0	3,994.5	4,181.2	3,865.4	29.9	29.3	99.01	-1,449.1	-275.4	821.5	764.6	56.88	14.441		
4,400.0	4,085.4	4,278.2	3,952.6	30.8	30.2	99.05	-1,490.6	-284.0	845.8	787.3	58.50	14.458		
4,500.0	4,176.2	4,375.2	4,039.9	31.6	31.0	99.09	-1,532.0	-292.5	870.1	810.0	60.11	14.475		
4,600.0	4,267.0	4,472.2	4,127.2	32.5	31.8	99.13	-1,573.5	-301.1	894.4	832.7	61.72	14.490		
4,700.0	4,357.8	4,569.2	4,214.4	33.3	32.7	99.16	-1,615.0	-309.7	918.7	855.3	63.34	14.504		
4,800.0	4,448.7	4,666.2	4,301.7	34.2	33.5	99.20	-1,656.5	-318.3	943.0	878.0	64.95	14.518		
4,900.0	4,539.5	4,763.2	4,388.9	35.0	34.3	99.23	-1,698.0	-326.9	967.3	900.7	66.57	14.531		
5,000.0	4,630.3	4,860.2	4,476.2	35.9	35.1	99.26	-1,739.5	-335.5	991.6	923.4	68.18	14.544		

Company:	Mineral Resources Inc	Local Co-ordinate Reference:	Well COLE X-6 4-8-31
Project:	SEC.31-T5N-R65W	TVD Reference:	WELL @ 4673.0ft (Original Well Elev)
Reference Site:	PAD X SEC.31-T5N-R65W	MD Reference:	WELL @ 4673.0ft (Original Well Elev)
Site Error:	0.0ft	North Reference:	True
Reference Well:	COLE X-6 4-8-31	Survey Calculation Method:	Minimum Curvature
Well Error:	0.0ft	Output errors are at	2.00 sigma
Reference Wellbore	Wellbore #1	Database:	EDM den0-adp01 Server Data
Reference Design:	Plan #7 (3-29-10)	Offset TVD Reference:	Offset Datum

Offset Design PAD X SEC.31-T5N-R65W - SUNSET X-2 2-0-6 - Wellbore #1 - Plan #7 (3-29-10)												Offset Site Error:	0.0 ft
Survey Program: 0-MWD												Offset Well Error:	0.0 ft
Reference		Offset		Semi Major Axis			Distance						
Measured Depth (ft)	Vertical Depth (ft)	Measured Depth (ft)	Vertical Depth (ft)	Reference (ft)	Offset (ft)	Highside Toolface (°)	Offset Wellbore Centre +N/-S (ft)	+E/-W (ft)	Between Centres (ft)	Between Ellipses (ft)	Minimum Separation (ft)	Separation Factor	Warning
5,100.0	4,721.2	4,957.2	4,563.4	36.7	36.0	99.29	-1,781.0	-344.1	1,015.9	946.1	69.80	14.555	
5,200.0	4,812.0	5,054.2	4,650.7	37.6	36.8	99.32	-1,822.5	-352.6	1,040.2	968.8	71.41	14.567	
5,300.0	4,902.8	5,151.2	4,738.0	38.4	37.6	99.35	-1,864.0	-361.2	1,064.5	991.5	73.03	14.577	
5,400.0	4,993.6	5,248.2	4,825.2	39.3	38.5	99.37	-1,905.5	-369.8	1,088.8	1,014.2	74.64	14.588	
5,500.0	5,084.5	5,345.2	4,912.5	40.2	39.3	99.40	-1,947.0	-378.4	1,113.1	1,036.9	76.25	14.597	
5,600.0	5,175.3	5,442.2	4,999.7	41.0	40.1	99.42	-1,988.5	-387.0	1,137.4	1,059.6	77.87	14.607	
5,700.0	5,266.1	5,539.2	5,087.0	41.9	41.0	99.44	-2,030.0	-395.6	1,161.7	1,082.3	79.48	14.616	
5,800.0	5,356.9	5,636.2	5,174.2	42.7	41.8	99.46	-2,071.4	-404.2	1,186.1	1,105.0	81.10	14.625	
5,900.0	5,447.8	5,733.2	5,261.5	43.6	42.6	99.48	-2,112.9	-412.7	1,210.4	1,127.6	82.72	14.633	
6,000.0	5,538.6	5,830.2	5,348.7	44.4	43.5	99.50	-2,154.4	-421.3	1,234.7	1,150.3	84.33	14.641	
6,100.0	5,629.4	5,927.2	5,436.0	45.3	44.3	99.52	-2,195.9	-429.9	1,259.0	1,173.0	85.95	14.648	
6,200.0	5,720.3	6,024.2	5,523.3	46.1	45.1	99.54	-2,237.4	-438.5	1,283.3	1,195.7	87.56	14.656	
6,300.0	5,811.1	6,121.2	5,610.5	47.0	46.0	99.56	-2,278.9	-447.1	1,307.6	1,218.4	89.18	14.663	
6,400.0	5,901.9	6,218.2	5,697.8	47.9	46.8	99.58	-2,320.4	-455.7	1,331.9	1,241.1	90.79	14.670	
6,500.0	5,992.7	6,315.2	5,785.0	48.7	47.6	99.59	-2,361.9	-464.3	1,356.2	1,263.8	92.41	14.676	
6,600.0	6,083.6	6,412.2	5,872.3	49.6	48.5	99.61	-2,403.4	-472.8	1,380.5	1,286.5	94.02	14.683	
6,700.0	6,174.9	6,512.4	5,962.4	50.3	49.3	99.98	-2,446.2	-481.7	1,404.6	1,309.0	95.61	14.691	
6,800.0	6,267.6	6,630.2	6,069.8	50.9	50.0	100.35	-2,493.8	-491.5	1,427.2	1,330.3	96.90	14.729	
6,900.0	6,361.5	6,749.1	6,180.0	51.4	50.6	100.69	-2,537.4	-500.6	1,447.8	1,349.7	98.11	14.757	
7,000.0	6,456.5	6,868.9	6,292.8	51.9	51.2	101.02	-2,576.7	-508.7	1,466.3	1,367.1	99.22	14.779	
7,100.0	6,552.6	6,989.5	6,408.0	52.3	51.7	101.32	-2,611.7	-515.9	1,482.7	1,382.5	100.23	14.793	
7,200.0	6,649.6	7,110.8	6,525.3	52.7	52.2	101.60	-2,642.0	-522.2	1,496.9	1,395.8	101.13	14.802	
7,300.0	6,747.4	7,232.7	6,644.4	53.0	52.6	101.86	-2,667.5	-527.5	1,509.0	1,407.1	101.92	14.806	
7,400.0	6,845.8	7,342.8	6,752.7	53.4	52.9	102.00	-2,686.7	-531.5	1,519.1	1,416.5	102.62	14.804	
7,500.0	6,944.3	7,442.3	6,850.7	53.7	53.3	102.03	-2,703.7	-535.0	1,529.0	1,425.6	103.36	14.793	
7,600.0	7,042.8	7,541.8	6,948.6	54.1	53.7	102.06	-2,720.6	-538.5	1,538.9	1,434.8	104.11	14.781	
7,700.0	7,141.2	7,641.3	7,046.6	54.5	54.1	102.08	-2,737.5	-542.0	1,548.8	1,443.9	104.86	14.770	
7,800.0	7,239.7	7,740.8	7,144.6	54.9	54.5	102.11	-2,754.4	-545.5	1,558.6	1,453.0	105.60	14.759	
7,825.7	7,265.0	7,766.3	7,169.8	55.0	54.6	102.12	-2,758.8	-546.4	1,561.2	1,455.4	105.79	14.757	

Company:	Mineral Resources Inc	Local Co-ordinate Reference:	Well COLE X-6 4-8-31
Project:	SEC.31-T5N-R65W	TVD Reference:	WELL @ 4673.0ft (Original Well Elev)
Reference Site:	PAD X SEC.31-T5N-R65W	MD Reference:	WELL @ 4673.0ft (Original Well Elev)
Site Error:	0.0ft	North Reference:	True
Reference Well:	COLE X-6 4-8-31	Survey Calculation Method:	Minimum Curvature
Well Error:	0.0ft	Output errors are at	2.00 sigma
Reference Wellbore	Wellbore #1	Database:	EDM den0-adp01 Server Data
Reference Design:	Plan #7 (3-29-10)	Offset TVD Reference:	Offset Datum

PAD X SEC.31-T5N-R65W - VALLEY PACK X-5 3-5-31 - Wellbore #1 - Design #1													Offset Site Error:	0.0 ft
Survey Program: 0-MWD													Offset Well Error:	0.0 ft
Reference		Offset		Semi Major Axis			Distance							
Measured Depth (ft)	Vertical Depth (ft)	Measured Depth (ft)	Vertical Depth (ft)	Reference (ft)	Offset (ft)	Highside Toolface (°)	Offset Wellbore Centre +N/-S (ft)	+E/-W (ft)	Between Centres (ft)	Between Ellipses (ft)	Minimum Separation (ft)	Separation Factor	Warning	
0.0	0.0	0.0	0.0	0.0	0.0	-112.22	-18.2	-44.6	48.2					
100.0	100.0	100.0	100.0	0.1	0.1	-112.22	-18.2	-44.6	48.2	47.9	0.22	214.310		
200.0	200.0	200.0	200.0	0.3	0.3	-112.22	-18.2	-44.6	48.2	47.5	0.67	71.437		
300.0	300.0	300.0	300.0	0.6	0.6	-112.22	-18.2	-44.6	48.2	47.0	1.12	42.862		
400.0	400.0	400.0	400.0	0.8	0.8	-112.22	-18.2	-44.6	48.2	46.6	1.57	30.616		
500.0	500.0	500.0	500.0	1.0	1.0	-112.22	-18.2	-44.6	48.2	46.1	2.02	23.812		
544.8	544.8	544.8	544.8	1.1	1.1	90.00	-18.2	-44.6	48.2	46.0	2.21	21.766 CC		
600.0	599.9	599.9	599.9	1.2	1.2	92.89	-18.2	-44.6	48.2	45.8	2.45	19.716 ES		
700.0	699.5	699.5	699.5	1.4	1.5	103.43	-18.2	-44.6	49.5	46.7	2.87	17.270		
800.0	798.3	798.3	798.3	1.7	1.7	118.68	-18.2	-44.6	55.1	51.8	3.33	16.528 SF		
900.0	896.0	896.0	896.0	2.0	1.9	134.04	-18.2	-44.6	68.0	64.2	3.82	17.787		
1,000.0	992.3	992.3	992.3	2.5	2.1	146.10	-18.2	-44.6	89.3	85.0	4.30	20.763		
1,100.0	1,086.7	1,086.7	1,086.7	3.0	2.3	154.49	-18.2	-44.6	118.4	113.6	4.76	24.886		
1,200.0	1,178.9	1,178.9	1,178.9	3.7	2.5	160.17	-18.2	-44.6	154.5	149.3	5.20	29.681		
1,300.0	1,269.7	1,269.7	1,269.7	4.5	2.7	164.30	-18.2	-44.6	194.7	189.0	5.68	34.280		
1,400.0	1,360.5	1,360.5	1,360.5	5.3	2.9	167.04	-18.2	-44.6	235.4	229.3	6.17	38.159		
1,500.0	1,451.4	1,451.4	1,451.4	6.1	3.1	168.98	-18.2	-44.6	276.5	269.8	6.67	41.445		
1,600.0	1,542.2	1,542.2	1,542.2	7.0	3.4	170.42	-18.2	-44.6	317.8	310.6	7.18	44.243		
1,700.0	1,633.0	1,633.0	1,633.0	7.8	3.6	171.53	-18.2	-44.6	359.2	351.5	7.70	46.643		
1,800.0	1,723.8	1,723.8	1,723.8	8.6	3.8	172.41	-18.2	-44.6	400.7	392.5	8.22	48.717		
1,900.0	1,814.7	1,814.7	1,814.7	9.5	4.0	173.12	-18.2	-44.6	442.3	433.5	8.75	50.522		
2,000.0	1,905.5	1,905.5	1,905.5	10.3	4.2	173.71	-18.2	-44.6	483.9	474.6	9.29	52.106		
2,100.0	1,996.3	1,996.3	1,996.3	11.2	4.4	174.21	-18.2	-44.6	525.5	515.7	9.82	53.503		
2,200.0	2,087.1	2,087.1	2,087.1	12.0	4.6	174.64	-18.2	-44.6	567.2	556.8	10.36	54.744		
2,300.0	2,178.0	2,178.0	2,178.0	12.8	4.8	175.01	-18.2	-44.6	608.9	598.0	10.90	55.853		
2,400.0	2,268.8	2,268.8	2,268.8	13.7	5.0	175.33	-18.2	-44.6	650.6	639.1	11.44	56.849		
2,500.0	2,359.6	2,359.6	2,359.6	14.5	5.2	175.61	-18.2	-44.6	692.3	680.3	11.99	57.748		
2,600.0	2,450.5	2,450.5	2,450.5	15.4	5.4	175.86	-18.2	-44.6	734.1	721.5	12.53	58.562		
2,700.0	2,541.3	2,556.5	2,556.5	16.2	5.6	176.11	-18.7	-44.4	775.4	762.3	13.10	59.210		
2,800.0	2,632.1	2,684.3	2,684.2	17.1	5.8	176.35	-23.8	-42.6	813.3	799.7	13.66	59.556		
2,900.0	2,722.9	2,816.6	2,815.9	17.9	6.1	176.52	-34.7	-38.8	847.1	832.8	14.23	59.545		
3,000.0	2,813.8	2,953.1	2,951.2	18.8	6.3	176.64	-51.9	-32.7	876.4	861.5	14.82	59.146		
3,100.0	2,904.6	3,083.4	3,079.4	19.7	6.6	176.71	-74.0	-25.0	901.1	885.7	15.41	58.476		
3,200.0	2,995.4	3,180.6	3,174.8	20.5	6.9	176.75	-91.8	-18.7	924.5	908.5	15.96	57.911		
3,300.0	3,086.3	3,277.9	3,270.1	21.4	7.1	176.78	-109.7	-12.4	947.9	931.3	16.52	57.379		
3,400.0	3,177.1	3,375.1	3,365.5	22.2	7.4	176.82	-127.6	-6.1	971.2	954.1	17.08	56.849		
3,500.0	3,267.9	3,472.3	3,460.9	23.1	7.7	176.85	-145.4	0.2	994.6	976.9	17.65	56.344		
3,600.0	3,358.7	3,569.6	3,556.2	23.9	8.0	176.88	-163.3	6.5	1,017.9	999.7	18.22	55.860		
3,700.0	3,449.6	3,666.8	3,651.6	24.8	8.3	176.91	-181.2	12.8	1,041.3	1,022.5	18.80	55.396		
3,800.0	3,540.4	3,764.0	3,747.0	25.6	8.6	176.94	-199.0	19.0	1,064.7	1,045.3	19.38	54.949		
3,900.0	3,631.2	3,861.2	3,842.3	26.5	9.0	176.97	-216.9	25.3	1,088.0	1,068.1	19.96	54.521		
4,000.0	3,722.0	3,958.5	3,937.7	27.3	9.3	177.00	-234.8	31.6	1,111.4	1,090.8	20.54	54.109		
4,100.0	3,812.9	4,055.7	4,033.1	28.2	9.6	177.02	-252.6	37.9	1,134.7	1,113.6	21.13	53.714		
4,200.0	3,903.7	4,152.9	4,128.4	29.0	10.0	177.05	-270.5	44.2	1,158.1	1,136.4	21.71	53.335		
4,300.0	3,994.5	4,250.2	4,223.8	29.9	10.4	177.07	-288.4	50.5	1,181.5	1,159.2	22.30	52.970		
4,400.0	4,085.4	4,347.4	4,319.2	30.8	10.7	177.10	-306.2	56.8	1,204.8	1,181.9	22.90	52.620		
4,500.0	4,176.2	4,444.6	4,414.6	31.6	11.1	177.12	-324.1	63.1	1,228.2	1,204.7	23.49	52.283		
4,600.0	4,267.0	4,541.9	4,509.9	32.5	11.5	177.14	-342.0	69.3	1,251.5	1,227.5	24.09	51.959		
4,700.0	4,357.8	4,639.1	4,605.3	33.3	11.8	177.16	-359.8	75.6	1,274.9	1,250.2	24.68	51.648		
4,800.0	4,448.7	4,736.3	4,700.7	34.2	12.2	177.18	-377.7	81.9	1,298.3	1,273.0	25.28	51.348		
4,900.0	4,539.5	4,833.6	4,796.0	35.0	12.6	177.20	-395.6	88.2	1,321.6	1,295.7	25.88	51.059		
5,000.0	4,630.3	4,930.8	4,891.4	35.9	13.0	177.22	-413.4	94.5	1,345.0	1,318.5	26.49	50.781		

CC - Min centre to center distance or convergent point, SF - min separation factor, ES - min ellipse separation

Company:	Mineral Resources Inc	Local Co-ordinate Reference:	Well COLE X-6 4-8-31
Project:	SEC.31-T5N-R65W	TVD Reference:	WELL @ 4673.0ft (Original Well Elev)
Reference Site:	PAD X SEC.31-T5N-R65W	MD Reference:	WELL @ 4673.0ft (Original Well Elev)
Site Error:	0.0ft	North Reference:	True
Reference Well:	COLE X-6 4-8-31	Survey Calculation Method:	Minimum Curvature
Well Error:	0.0ft	Output errors are at	2.00 sigma
Reference Wellbore	Wellbore #1	Database:	EDM den0-adp01 Server Data
Reference Design:	Plan #7 (3-29-10)	Offset TVD Reference:	Offset Datum

Offset Design PAD X SEC.31-T5N-R65W - VALLEY PACK X-5 3-5-31 - Wellbore #1 - Design #1												Offset Site Error:	0.0 ft
Survey Program: 0-MWD												Offset Well Error:	0.0 ft
Reference		Offset		Semi Major Axis			Distance						
Measured Depth (ft)	Vertical Depth (ft)	Measured Depth (ft)	Vertical Depth (ft)	Reference (ft)	Offset (ft)	Highside Toolface (°)	Offset Wellbore Centre +N/-S (ft)	+E/-W (ft)	Between Centres (ft)	Between Ellipses (ft)	Minimum Separation (ft)	Separation Factor	Warning
5,100.0	4,721.2	5,028.0	4,986.8	36.7	13.4	177.23	-431.3	100.8	1,368.4	1,341.3	27.09	50.513	
5,200.0	4,812.0	5,125.3	5,082.1	37.6	13.8	177.25	-449.1	107.1	1,391.7	1,364.0	27.69	50.255	
5,300.0	4,902.8	5,222.5	5,177.5	38.4	14.1	177.27	-467.0	113.4	1,415.1	1,386.8	28.30	50.005	
5,400.0	4,993.6	5,319.7	5,272.9	39.3	14.5	177.28	-484.9	119.6	1,438.4	1,409.5	28.90	49.765	
5,500.0	5,084.5	5,417.0	5,368.3	40.2	14.9	177.30	-502.7	125.9	1,461.8	1,432.3	29.51	49.533	
5,600.0	5,175.3	5,500.0	5,449.7	41.0	15.3	177.31	-518.0	131.3	1,485.2	1,455.2	30.09	49.367	
5,700.0	5,266.1	5,570.3	5,518.9	41.9	15.5	177.33	-529.9	135.5	1,510.2	1,479.5	30.62	49.317	
5,800.0	5,356.9	5,633.3	5,581.0	42.7	15.7	177.34	-539.3	138.8	1,537.2	1,506.1	31.14	49.369	
5,900.0	5,447.8	5,700.0	5,647.2	43.6	15.9	177.36	-547.7	141.8	1,566.4	1,534.7	31.66	49.475	
6,000.0	5,538.6	5,756.7	5,703.4	44.4	16.0	177.39	-553.8	143.9	1,597.6	1,565.4	32.15	49.683	
6,100.0	5,629.4	5,800.0	5,746.6	45.3	16.1	177.41	-557.7	145.3	1,630.9	1,598.3	32.62	49.995	
6,200.0	5,720.3	5,876.5	5,822.9	46.1	16.3	177.44	-563.1	147.2	1,665.9	1,632.8	33.15	50.252	
6,300.0	5,811.1	5,935.1	5,881.4	47.0	16.4	177.47	-566.0	148.2	1,703.0	1,669.3	33.64	50.622	
6,400.0	5,901.9	6,000.0	5,946.3	47.9	16.5	177.51	-567.8	148.8	1,742.0	1,707.8	34.14	51.022	
6,500.0	5,992.7	6,053.7	6,000.0	48.7	16.6	177.54	-568.3	149.0	1,782.7	1,748.1	34.62	51.498	
6,600.0	6,083.6	6,137.3	6,083.6	49.6	16.7	177.60	-568.3	149.0	1,824.5	1,789.4	35.14	51.917	
6,700.0	6,174.9	6,228.6	6,174.9	50.3	16.9	177.68	-568.3	149.0	1,865.2	1,829.4	35.76	52.160	
6,800.0	6,267.6	6,321.3	6,267.6	50.9	17.0	177.76	-568.3	149.0	1,902.7	1,866.4	36.33	52.367	
6,900.0	6,361.5	6,415.2	6,361.5	51.4	17.2	177.82	-568.3	149.0	1,937.0	1,900.2	36.86	52.548	
7,000.0	6,456.5	6,510.3	6,456.5	51.9	17.3	177.88	-568.3	149.0	1,968.0	1,930.7	37.34	52.706	
7,100.0	6,552.6	6,606.4	6,552.6	52.3	17.5	177.93	-568.3	149.0	1,995.7	1,957.9	37.77	52.842	

Company:	Mineral Resources Inc	Local Co-ordinate Reference:	Well COLE X-6 4-8-31
Project:	SEC.31-T5N-R65W	TVD Reference:	WELL @ 4673.0ft (Original Well Elev)
Reference Site:	PAD X SEC.31-T5N-R65W	MD Reference:	WELL @ 4673.0ft (Original Well Elev)
Site Error:	0.0ft	North Reference:	True
Reference Well:	COLE X-6 4-8-31	Survey Calculation Method:	Minimum Curvature
Well Error:	0.0ft	Output errors are at	2.00 sigma
Reference Wellbore	Wellbore #1	Database:	EDM den0-adp01 Server Data
Reference Design:	Plan #7 (3-29-10)	Offset TVD Reference:	Offset Datum

PAD Z SEC.31-T5N-R65W - PERCY Z3 4-2-6 - Wellbore #1 - Plan #4 (3-29-10)													Offset Site Error:	0.0 ft
Survey Program: 0-MWD													Offset Well Error:	0.0 ft
Reference		Offset		Semi Major Axis			Distance							Warning
Measured Depth (ft)	Vertical Depth (ft)	Measured Depth (ft)	Vertical Depth (ft)	Reference (ft)	Offset (ft)	Highside Toolface (°)	Offset Wellbore Centre +N/-S (ft)	+E/-W (ft)	Between Centres (ft)	Between Ellipses (ft)	Minimum Separation (ft)	Separation Factor		
0.0	0.0	0.0	0.0	0.0	0.0	62.41	7.3	13.9	15.7	15.7	0.00	N/A		
100.0	100.0	100.0	100.0	0.1	0.1	62.41	7.3	13.9	15.7	15.5	0.22	69.954		
200.0	200.0	200.0	200.0	0.3	0.3	62.41	7.3	13.9	15.7	15.0	0.67	23.318		
300.0	300.0	300.1	300.0	0.6	0.5	73.62	4.3	14.7	15.3	14.2	1.10	13.903		
307.2	307.2	307.3	307.2	0.6	0.6	75.33	3.9	14.8	15.3	14.2	1.14	13.494 CC, ES		
400.0	400.0	399.4	398.9	0.8	0.8	104.68	-4.5	17.0	17.6	16.1	1.56	11.272 SF		
500.0	500.0	497.3	495.7	1.0	1.1	132.13	-18.8	20.8	28.3	26.3	2.05	13.824		
600.0	599.9	593.8	590.0	1.2	1.5	-13.25	-38.3	25.9	44.4	41.9	2.50	17.779		
700.0	699.5	689.2	682.0	1.4	1.9	-6.68	-62.9	32.3	61.2	58.2	2.93	20.886		
800.0	798.3	783.7	771.4	1.7	2.5	-2.53	-92.3	40.0	78.0	74.6	3.38	23.056		
900.0	896.0	877.3	858.1	2.0	3.2	0.48	-126.3	48.9	94.8	90.9	3.87	24.501		
1,000.0	992.3	970.0	941.9	2.5	4.0	2.87	-164.7	58.9	111.3	106.9	4.39	25.375		
1,100.0	1,086.7	1,061.9	1,022.6	3.0	4.8	4.88	-207.2	70.1	127.5	122.5	4.95	25.767		
1,200.0	1,178.9	1,153.0	1,100.0	3.7	5.7	6.65	-253.6	82.2	143.4	137.9	5.53	25.921		
1,300.0	1,269.7	1,247.7	1,178.2	4.5	6.8	8.28	-305.4	95.8	160.7	154.4	6.28	25.574		
1,400.0	1,360.5	1,346.0	1,258.9	5.3	7.9	9.65	-359.7	109.9	178.6	171.5	7.07	25.247		
1,500.0	1,451.4	1,444.3	1,339.7	6.1	9.0	10.76	-413.9	124.1	196.6	188.7	7.89	24.902		
1,600.0	1,542.2	1,542.6	1,420.4	7.0	10.1	11.69	-468.1	138.3	214.6	205.9	8.74	24.557		
1,700.0	1,633.0	1,640.9	1,501.2	7.8	11.2	12.47	-522.3	152.5	232.7	223.1	9.61	24.226		
1,800.0	1,723.8	1,739.2	1,582.0	8.6	12.3	13.14	-576.6	166.7	250.9	240.4	10.49	23.915		
1,900.0	1,814.7	1,837.5	1,662.7	9.5	13.5	13.72	-630.8	180.9	269.0	257.6	11.39	23.627		
2,000.0	1,905.5	1,935.8	1,743.5	10.3	14.6	14.22	-685.0	195.1	287.2	274.9	12.29	23.361		
2,100.0	1,996.3	2,034.1	1,824.2	11.2	15.7	14.67	-739.2	209.3	305.4	292.2	13.21	23.118		
2,200.0	2,087.1	2,132.5	1,905.0	12.0	16.8	15.07	-793.5	223.5	323.7	309.5	14.14	22.894		
2,300.0	2,178.0	2,230.8	1,985.8	12.8	17.9	15.42	-847.7	237.6	341.9	326.8	15.07	22.689		
2,400.0	2,268.8	2,329.1	2,066.5	13.7	19.1	15.74	-901.9	251.8	360.1	344.1	16.01	22.500		
2,500.0	2,359.6	2,427.4	2,147.3	14.5	20.2	16.02	-956.1	266.0	378.4	361.4	16.95	22.327		
2,600.0	2,450.5	2,525.7	2,228.0	15.4	21.3	16.28	-1,010.4	280.2	396.7	378.8	17.89	22.167		
2,700.0	2,541.3	2,624.0	2,308.8	16.2	22.4	16.52	-1,064.6	294.4	414.9	396.1	18.84	22.019		
2,800.0	2,632.1	2,722.3	2,389.5	17.1	23.6	16.74	-1,118.8	308.6	433.2	413.4	19.80	21.882		
2,900.0	2,722.9	2,820.6	2,470.3	17.9	24.7	16.94	-1,173.0	322.8	451.5	430.7	20.75	21.756		
3,000.0	2,813.8	2,918.9	2,551.1	18.8	25.8	17.12	-1,227.3	337.0	469.8	448.1	21.71	21.638		
3,100.0	2,904.6	3,017.2	2,631.8	19.7	26.9	17.30	-1,281.5	351.1	488.1	465.4	22.67	21.528		
3,200.0	2,995.4	3,115.5	2,712.6	20.5	28.1	17.45	-1,335.7	365.3	506.4	482.7	23.63	21.426		
3,300.0	3,086.3	3,213.8	2,793.3	21.4	29.2	17.60	-1,389.9	379.5	524.7	500.1	24.60	21.330		
3,400.0	3,177.1	3,312.1	2,874.1	22.2	30.3	17.74	-1,444.2	393.7	543.0	517.4	25.56	21.240		
3,500.0	3,267.9	3,410.4	2,954.8	23.1	31.4	17.87	-1,498.4	407.9	561.3	534.8	26.53	21.156		
3,600.0	3,358.7	3,508.7	3,035.6	23.9	32.6	17.99	-1,552.6	422.1	579.6	552.1	27.50	21.077		
3,700.0	3,449.6	3,607.0	3,116.4	24.8	33.7	18.10	-1,606.8	436.3	597.9	569.5	28.47	21.003		
3,800.0	3,540.4	3,705.3	3,197.1	25.6	34.8	18.21	-1,661.1	450.5	616.2	586.8	29.44	20.932		
3,900.0	3,631.2	3,803.6	3,277.9	26.5	35.9	18.31	-1,715.3	464.6	634.6	604.1	30.41	20.866		
4,000.0	3,722.0	3,901.9	3,358.6	27.3	37.1	18.40	-1,769.5	478.8	652.9	621.5	31.38	20.803		
4,100.0	3,812.9	4,000.2	3,439.4	28.2	38.2	18.49	-1,823.7	493.0	671.2	638.8	32.36	20.744		
4,200.0	3,903.7	4,098.5	3,520.1	29.0	39.3	18.57	-1,878.0	507.2	689.5	656.2	33.33	20.687		
4,300.0	3,994.5	4,196.8	3,600.9	29.9	40.4	18.65	-1,932.2	521.4	707.8	673.5	34.31	20.634		
4,400.0	4,085.4	4,295.1	3,681.7	30.8	41.6	18.73	-1,986.4	535.6	726.2	690.9	35.28	20.583		
4,500.0	4,176.2	4,393.4	3,762.4	31.6	42.7	18.80	-2,040.6	549.8	744.5	708.2	36.26	20.534		
4,600.0	4,267.0	4,491.7	3,843.2	32.5	43.8	18.87	-2,094.9	564.0	762.8	725.6	37.23	20.488		
4,700.0	4,357.8	4,590.0	3,923.9	33.3	44.9	18.94	-2,149.1	578.2	781.1	742.9	38.21	20.444		
4,800.0	4,448.7	4,688.3	4,004.7	34.2	46.1	19.00	-2,203.3	592.3	799.5	760.3	39.19	20.402		
4,900.0	4,539.5	4,786.6	4,085.4	35.0	47.2	19.06	-2,257.5	606.5	817.8	777.6	40.16	20.361		
5,000.0	4,630.3	4,884.9	4,166.2	35.9	48.3	19.12	-2,311.8	620.7	836.1	795.0	41.14	20.323		

Company:	Mineral Resources Inc	Local Co-ordinate Reference:	Well COLE X-6 4-8-31
Project:	SEC.31-T5N-R65W	TVD Reference:	WELL @ 4673.0ft (Original Well Elev)
Reference Site:	PAD X SEC.31-T5N-R65W	MD Reference:	WELL @ 4673.0ft (Original Well Elev)
Site Error:	0.0ft	North Reference:	True
Reference Well:	COLE X-6 4-8-31	Survey Calculation Method:	Minimum Curvature
Well Error:	0.0ft	Output errors are at	2.00 sigma
Reference Wellbore	Wellbore #1	Database:	EDM den0-adp01 Server Data
Reference Design:	Plan #7 (3-29-10)	Offset TVD Reference:	Offset Datum

PAD Z SEC.31-T5N-R65W - PERCY Z3 4-2-6 - Wellbore #1 - Plan #4 (3-29-10)													Offset Site Error: 0.0 ft	
Survey Design		Survey Program: 0-MWD											Offset Well Error: 0.0 ft	
Reference		Offset		Semi Major Axis			Distance							Warning
Measured Depth (ft)	Vertical Depth (ft)	Measured Depth (ft)	Vertical Depth (ft)	Reference (ft)	Offset (ft)	Highside Toolface (°)	Offset Wellbore Centre +N/-S (ft)	Offset Wellbore Centre +E/-W (ft)	Between Centres (ft)	Between Ellipses (ft)	Minimum Separation (ft)	Separation Factor		
5,100.0	4,721.2	4,983.2	4,247.0	36.7	49.5	19.17	-2,366.0	634.9	854.5	812.3	42.12	20.286		
5,200.0	4,812.0	5,081.5	4,327.7	37.6	50.6	19.22	-2,420.2	649.1	872.8	829.7	43.10	20.250		
5,300.0	4,902.8	5,179.8	4,408.5	38.4	51.7	19.27	-2,474.4	663.3	891.1	847.0	44.08	20.216		
5,400.0	4,993.6	5,278.1	4,489.2	39.3	52.8	19.32	-2,528.7	677.5	909.5	864.4	45.06	20.184		
5,500.0	5,084.5	5,376.4	4,570.0	40.2	54.0	19.37	-2,582.9	691.7	927.8	881.8	46.04	20.152		
5,600.0	5,175.3	5,474.7	4,650.7	41.0	55.1	19.41	-2,637.1	705.8	946.1	899.1	47.02	20.122		
5,700.0	5,266.1	5,573.0	4,731.5	41.9	56.2	19.46	-2,691.3	720.0	964.5	916.5	48.00	20.093		
5,800.0	5,356.9	5,671.3	4,812.3	42.7	57.3	19.50	-2,745.6	734.2	982.8	933.8	48.98	20.065		
5,900.0	5,447.8	5,769.6	4,893.0	43.6	58.5	19.54	-2,799.8	748.4	1,001.1	951.2	49.96	20.038		
6,000.0	5,538.6	5,867.9	4,973.8	44.4	59.6	19.58	-2,854.0	762.6	1,019.5	968.5	50.94	20.012		
6,100.0	5,629.4	5,966.2	5,054.5	45.3	60.7	19.61	-2,908.2	776.8	1,037.8	985.9	51.92	19.987		
6,200.0	5,720.3	6,064.5	5,135.3	46.1	61.8	19.65	-2,962.4	791.0	1,056.1	1,003.2	52.91	19.963		
6,300.0	5,811.1	6,162.8	5,216.0	47.0	63.0	19.68	-3,016.7	805.2	1,074.5	1,020.6	53.89	19.939		
6,400.0	5,901.9	6,261.1	5,296.8	47.9	64.1	19.72	-3,070.9	819.4	1,092.8	1,037.9	54.87	19.916		
6,500.0	5,992.7	6,359.5	5,377.6	48.7	65.2	19.75	-3,125.1	833.5	1,111.2	1,055.3	55.85	19.895		
6,600.0	6,083.6	6,457.8	5,458.3	49.6	66.3	19.78	-3,179.3	847.7	1,129.5	1,072.7	56.83	19.873		
6,700.0	6,174.9	6,555.8	5,538.9	50.3	67.5	19.90	-3,233.5	861.9	1,148.9	1,091.2	57.72	19.904		
6,800.0	6,267.6	6,653.2	5,618.9	50.9	68.6	20.01	-3,287.2	875.9	1,171.6	1,113.1	58.47	20.036		
6,900.0	6,361.5	6,749.8	5,698.3	51.4	69.7	20.09	-3,340.5	889.9	1,197.4	1,138.2	59.12	20.252		
7,000.0	6,456.5	6,845.5	5,776.8	51.9	70.8	20.14	-3,393.2	903.7	1,226.3	1,166.6	59.67	20.550		
7,100.0	6,552.6	6,940.1	5,854.6	52.3	71.9	20.16	-3,445.4	917.3	1,258.4	1,198.3	60.13	20.929		
7,200.0	6,649.6	7,033.5	5,931.3	52.7	72.9	20.17	-3,497.0	930.8	1,293.6	1,233.1	60.49	21.387		
7,300.0	6,747.4	7,125.7	6,007.0	53.0	74.0	20.15	-3,547.8	944.1	1,331.9	1,271.1	60.75	21.923		
7,400.0	6,845.8	7,254.5	6,113.5	53.4	75.3	19.87	-3,617.9	962.5	1,372.3	1,311.2	61.04	22.481		
7,500.0	6,944.3	7,431.4	6,264.5	53.7	76.6	19.38	-3,707.0	985.8	1,408.4	1,346.9	61.53	22.889		
7,600.0	7,042.8	7,616.5	6,428.3	54.1	78.0	19.01	-3,790.4	1,007.6	1,438.8	1,376.6	62.13	23.157		
7,700.0	7,141.2	7,808.6	6,603.8	54.5	79.1	18.76	-3,865.9	1,027.4	1,463.0	1,400.1	62.81	23.291		
7,800.0	7,239.7	7,958.6	6,744.0	54.9	80.0	18.65	-3,917.2	1,040.8	1,481.4	1,418.0	63.44	23.353		
7,825.7	7,265.0	7,983.8	6,767.8	55.0	80.2	18.63	-3,925.6	1,043.0	1,485.9	1,422.3	63.57	23.375		

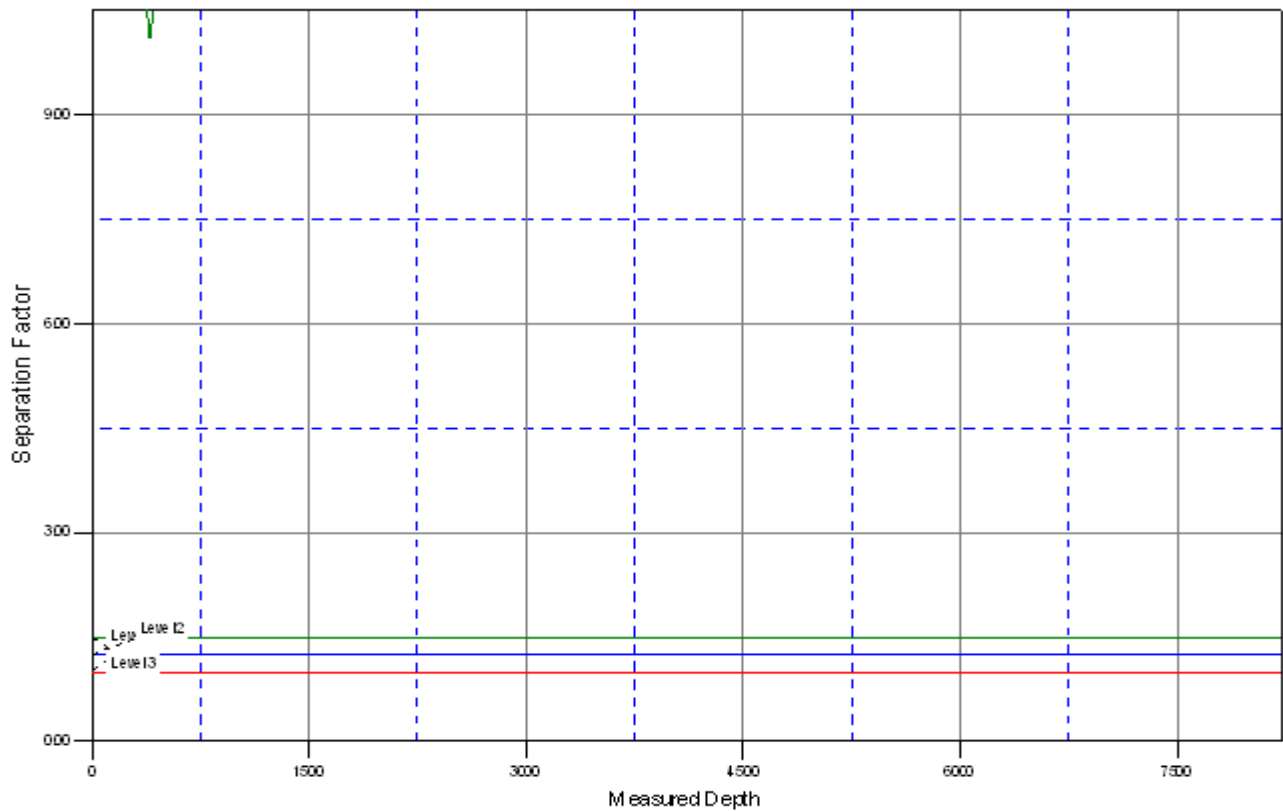
Reference Depths are relative to WELL @ 4673.0ft (Original Well Elev) Coordinates are relative to: COLE X-6 4-8-31
Offset Depths are relative to Offset Datum Coordinate System is US State Plane 1983, Colorado Northern Zone
Central Meridian is 105° 30' 0.000 W ° Grid Convergence at Surface is: 0.51°



Company:	Mineral Resources Inc	Local Co-ordinate Reference:	Well COLE X-6 4-8-31
Project:	SEC.31-T5N-R65W	TVD Reference:	WELL @ 4673.0ft (Original Well Elev)
Reference Site:	PAD X SEC.31-T5N-R65W	MD Reference:	WELL @ 4673.0ft (Original Well Elev)
Site Error:	0.0ft	North Reference:	True
Reference Well:	COLE X-6 4-8-31	Survey Calculation Method:	Minimum Curvature
Well Error:	0.0ft	Output errors are at	2.00 sigma
Reference Wellbore	Wellbore #1	Database:	EDM den0-adp01 Server Data
Reference Design:	Plan #7 (3-29-10)	Offset TVD Reference:	Offset Datum

Reference Depths are relative to WELL @ 4673.0ft (Original Well Elev) Coordinates are relative to: COLE X-6 4-8-31
Offset Depths are relative to Offset Datum Coordinate System is US State Plane 1983, Colorado Northern Zone
Central Meridian is 105° 30' 0.000 W ° Grid Convergence at Surface is: 0.51°

Separation Factor Plot



LEGEND

EY PACK X-5 3-5-31, Wellbore #1, Design #1 \V0 RE-1 X-7 4-6-31, Wellbore #1, Plan #5 (3-29-10) \V0
ET X-2 2-0-6, Wellbore #1, Plan #7 (3-29-10) \V0 PERCY Z3 4-2-6, Wellbore #1, Plan #4 (3-29-10) \V0