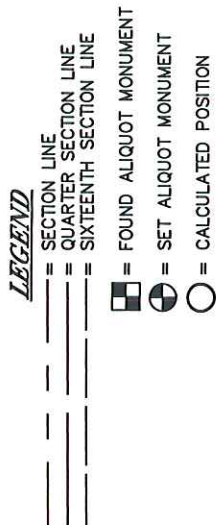


COLE X6 4-8-31

## WELL LOCATION

LOCATION  
NE $\frac{1}{4}$ SW $\frac{1}{4}$  SEC. 31, T.5N., R.65W.

See Visible Improvements Exhibit  
for all visible improvements within  
200' of wellhead.



All distances to section lines  
are measured perpendicular to  
said section lines.

Ground elevation shown is  
approximate and is based on  
an observed GPS elevation  
(NAVD 1988 DATUM).

Bearings shown are Grid  
Bearings of the Colorado State  
Plane Coordinate System,  
North Zone, North American  
Datum 1983/92.

King Surveyors Inc. of Windsor, Colorado has in accordance with a request from COLLIN RICHARDSON for Mineral Resources Inc. determined the surface location of COLE X6 4-8-31 to be 2605' from the South line and 1743' from the West line and the Bottom Hole to be 135' from the South line and 2558' from the East line of Section 31, Township 5 North, Range 65 West of the Sixth Principal Meridian, County of Weld, State of Colorado.

STEVEN A. LUND  
34995  
10-10-08  
Steven A. Lund—On behalf of King Surveyors, Inc.  
Licensed Land Surveyor No. 34995  
State of Colorado

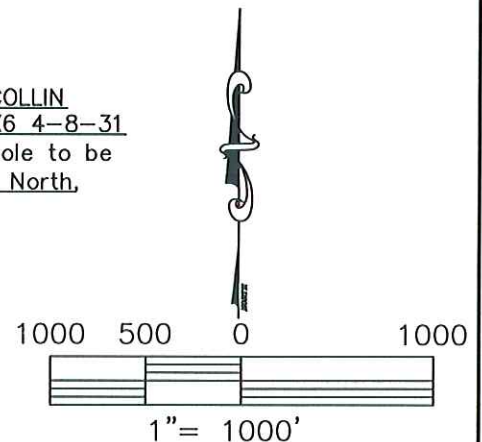
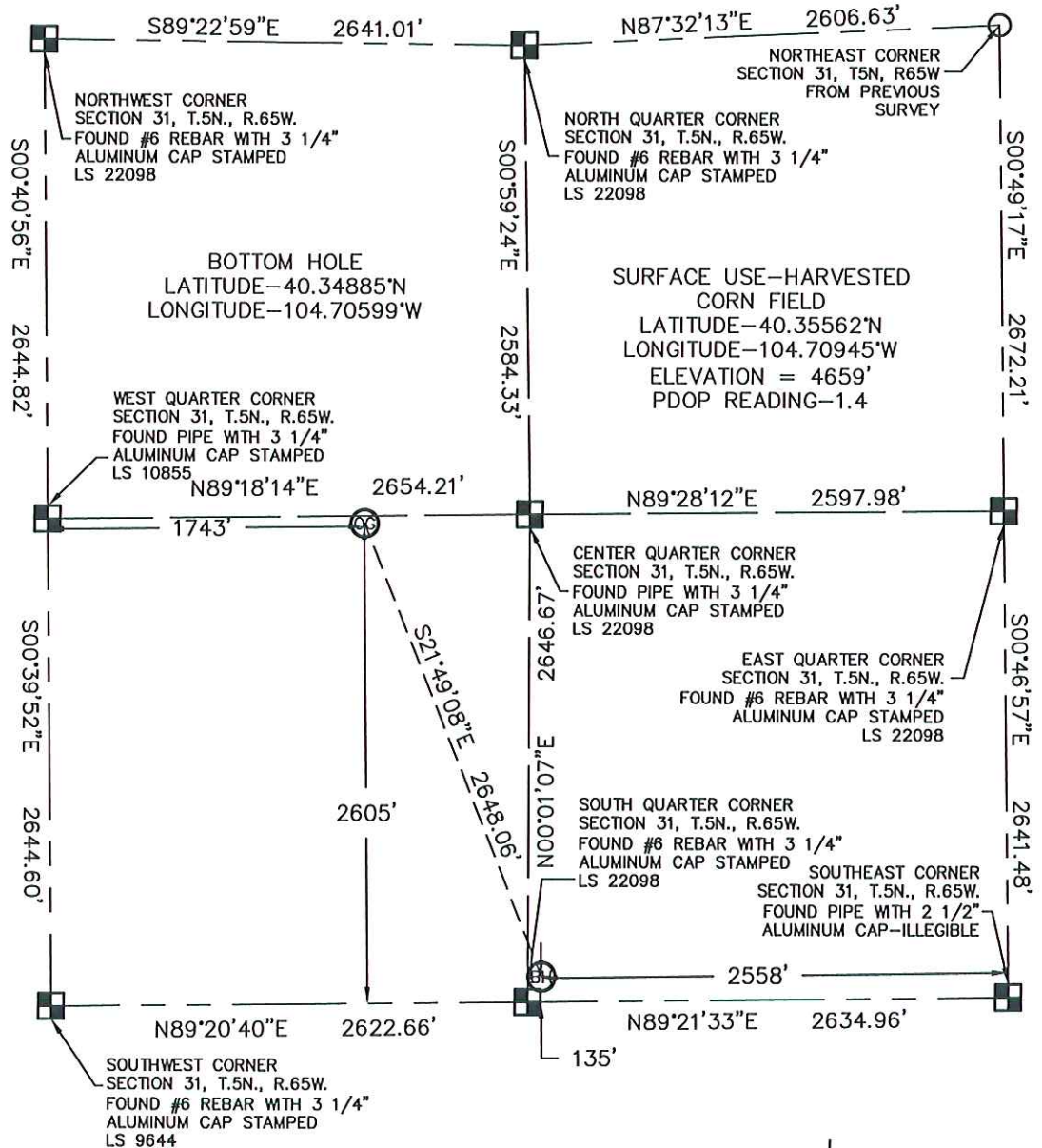


**KING SURVEYORS, INC.**

650 Garden Drive | Windsor, Colorado 80550

phone: (970) 686-5011 | fax: (970) 686-5821

www.kingsurveyors.com



**PROJECT NO:** 2007482

**DATE:** 10-9-08

**CLIENT:** MINERAL RESOURCES

**DWG:** 2007482WELLEXHIBIT\_X

**FIELD OPERATOR:** DALLAS NIELSEN

**DATE OF WORK:** 1/14/08