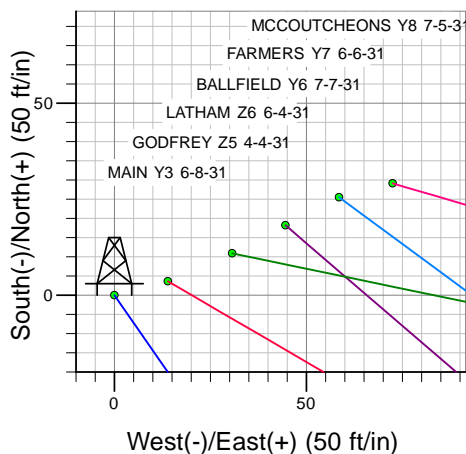
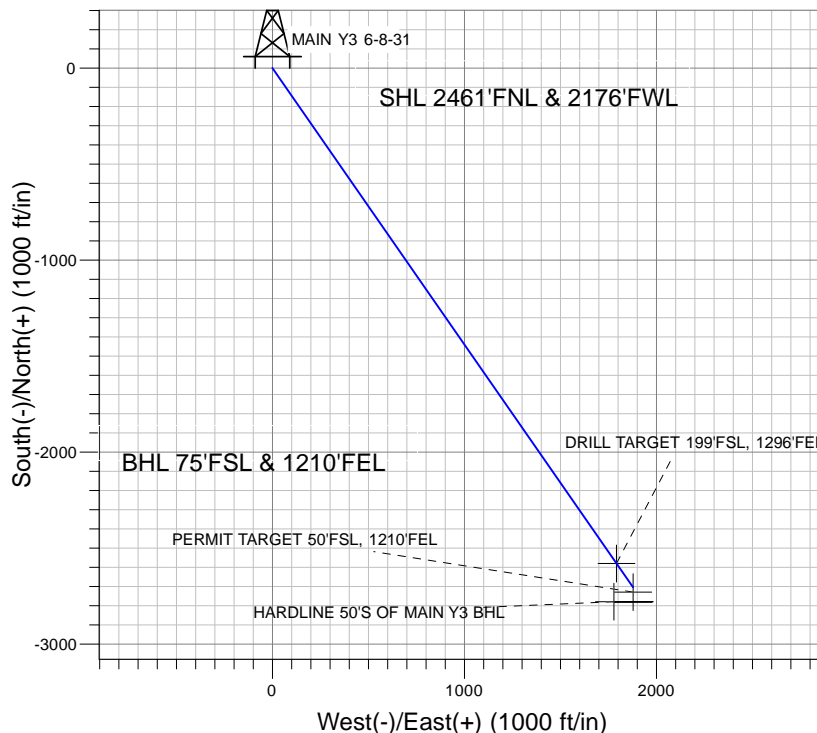
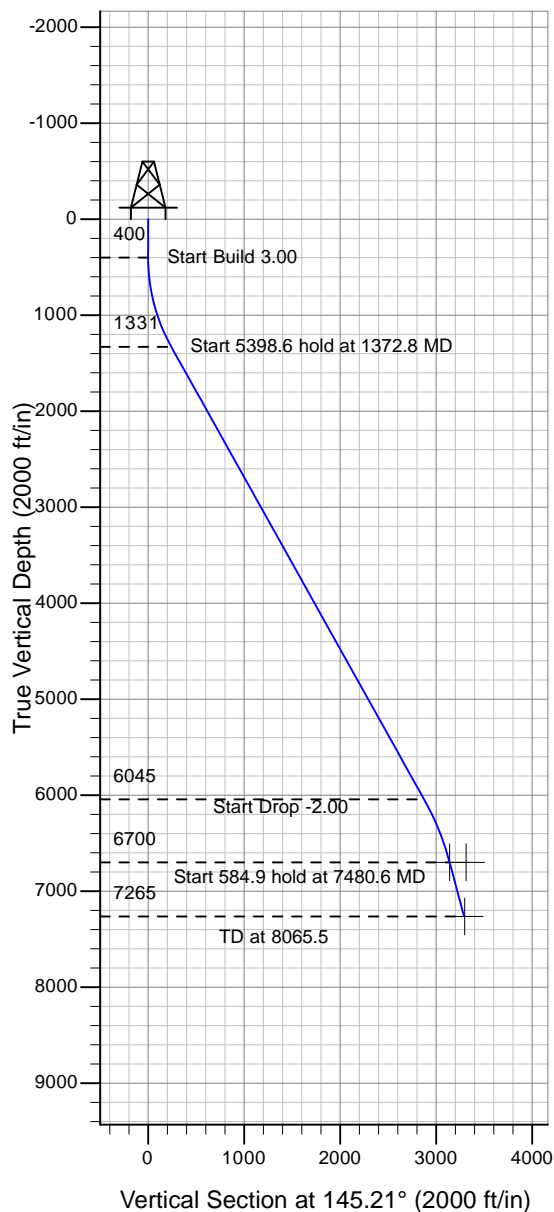


Well Name: MAIN Y3 6-8-31

Surface Location: PAD Y SEC.31-T5N-R65W
North American Datum 1983 , US State Plane 1983 , Colorado Northern Zone
Ground Elevation: 4659.0

+N/-S+E/-W Northing Easting Latitude Longitude Slot
0.0 0.0 1373557.40 3220747.94 40° 21' 21.996 N 104° 42' 28.440 W
Original Well Elev WELL @ 4673.0ft (Original Well Elev)

Mineral Resources Inc



PAD Y SEC.31-T5N-R65W
MAIN Y3 6-8-31
Plan #6 (3-29-10)
11:40, April 05 2010



Azimuths to True North
Magnetic North: 8.99°
Magnetic Field
Strength: 53242.1snT
Dip Angle: 67.07°
Date: 4/5/2010
Model: IGRF2010

WELLBORE TARGET DETAILS (LAT/LONG)

Name	TVD	+N/-S	+E/-W	Latitude	Longitude	Shape
DRILL TARGET 199'FSL, 1296'FEL	6700.0	-2579.3	1792.3	40° 20' 56.507 N	104° 42' 5.291 W	Point
PERMIT TARGET 50'FSL, 1210'FEL	6700.0	-2728.6	1878.7	40° 20' 55.032 N	104° 42' 4.176 W	Point
HARDLINE 50'S OF MAIN Y3 BHL	7265.0	-2778.6	1778.7	40° 20' 54.538 N	104° 42' 5.467 W	Polygon

SECTION DETAILS

Sec	MD	Inc	Azi	TVD	+N/-S	+E/-W	DLeg	TFace	VSec	Target
1	0.0	0.00	0.00	0.0	0.0	0.0	0.00	0.00	0.0	
2	400.0	0.00	0.00	400.0	0.0	0.0	0.00	0.00	0.0	
3	1372.8	29.18	145.21	1331.3	-199.1	138.3	3.00	145.21	242.4	
4	6771.4	29.18	145.21	6044.6	-2360.8	1640.5	0.00	0.00	2874.8	
5	7480.6	15.00	145.21	6700.0	-2579.3	1792.3	2.00	180.00	3140.9	DRILL TARGET 199'FSL, 1296'FEL
6	8065.5	15.00	145.21	7265.0	-2703.6	1878.7	0.00	0.00	3292.3	



Mineral Resources Inc

SEC.31-T5N-R65W

PAD Y SEC.31-T5N-R65W

MAIN Y3 6-8-31

Wellbore #1

Plan: Plan #6 (3-29-10)

Standard Planning Report

05 April, 2010

Database:	EDM den0-adp01 Server Data	Local Co-ordinate Reference:	Well MAIN Y3 6-8-31
Company:	Mineral Resources Inc	TVD Reference:	WELL @ 4673.0ft (Original Well Elev)
Project:	SEC.31-T5N-R65W	MD Reference:	WELL @ 4673.0ft (Original Well Elev)
Site:	PAD Y SEC.31-T5N-R65W	North Reference:	True
Well:	MAIN Y3 6-8-31	Survey Calculation Method:	Minimum Curvature
Wellbore:	Wellbore #1		
Design:	Plan #6 (3-29-10)		

Project	SEC.31-T5N-R65W		
Map System:	US State Plane 1983	System Datum:	Mean Sea Level
Geo Datum:	North American Datum 1983		Using Well Reference Point
Map Zone:	Colorado Northern Zone		Using geodetic scale factor

Site						PAD Y SEC.31-T5N-R65W							
Site Position:						Northing:		1,373,449.41 ft		Latitude:		40° 21' 20.952 N	
From:			Lat/Long			Easting:		3,220,484.14 ft		Longitude:		104° 42' 31.860 W	
Position Uncertainty:			0.0 ft			Slot Radius:		"		Grid Convergence:		0.51 °	

Well	MAIN Y3 6-8-31					
Well Position	+N-S	105.6 ft	Northing:	1,373,557.40 ft	Latitude:	40° 21' 21.996 N
	+E-W	264.8 ft	Easting:	3,220,747.94 ft	Longitude:	104° 42' 28.440 W
Position Uncertainty		0.0 ft	Wellhead Elevation:	ft	Ground Level:	4,659.0 ft

Wellbore	Wellbore #1				
Magnetics	Model Name	Sample Date	Declination (°)	Dip Angle (°)	Field Strength (nT)
	IGRF200510	1/29/2008	9.25	67.15	53,487
	IGRF200510	10/7/2008	9.16	67.12	53,416
	IGRF2010	4/5/2010	8.99	67.07	53,242

Design	Plan #6 (3-29-10)			
Audit Notes:				
Version:	Phase:	PROTOTYPE	Tie On Depth:	0.0
Vertical Section:	Depth From (TVD) (ft)	+N/-S (ft)	+E/-W (ft)	Direction (°)
	0.0	0.0	0.0	145.21

Plan Sections										
Measured Depth (ft)	Inclination (°)	Azimuth (°)	Vertical Depth (ft)	+N/-S (ft)	+E/-W (ft)	Dogleg Rate (°/100ft)	Build Rate (°/100ft)	Turn Rate (°/100ft)	TFO (°)	Target
0.0	0.00	0.00	0.0	0.0	0.0	0.00	0.00	0.00	0.00	
400.0	0.00	0.00	400.0	0.0	0.0	0.00	0.00	0.00	0.00	
1,372.8	29.18	145.21	1,331.3	-199.1	138.3	3.00	3.00	0.00	145.21	
6,771.4	29.18	145.21	6,044.6	-2,360.8	1,640.5	0.00	0.00	0.00	0.00	
7,480.6	15.00	145.21	6,700.0	-2,579.3	1,792.3	2.00	-2.00	0.00	180.00	DRILL TARGET 19
8,065.5	15.00	145.21	7,265.0	-2,703.6	1,878.7	0.00	0.00	0.00	0.00	

Database:	EDM den0-adp01 Server Data	Local Co-ordinate Reference:	Well MAIN Y3 6-8-31
Company:	Mineral Resources Inc	TVD Reference:	WELL @ 4673.0ft (Original Well Elev)
Project:	SEC.31-T5N-R65W	MD Reference:	WELL @ 4673.0ft (Original Well Elev)
Site:	PAD Y SEC.31-T5N-R65W	North Reference:	True
Well:	MAIN Y3 6-8-31	Survey Calculation Method:	Minimum Curvature
Wellbore:	Wellbore #1		
Design:	Plan #6 (3-29-10)		

Planned Survey									
Measured Depth (ft)	Inclination (°)	Azimuth (°)	Vertical Depth (ft)	+N/-S (ft)	+E/-W (ft)	Vertical Section (ft)	Dogleg Rate (°/100ft)	Build Rate (°/100ft)	Turn Rate (°/100ft)
0.0	0.00	0.00	0.0	0.0	0.0	0.0	0.00	0.00	0.00
40.0	0.00	0.00	40.0	0.0	0.0	0.0	0.00	0.00	0.00
80.0	0.00	0.00	80.0	0.0	0.0	0.0	0.00	0.00	0.00
120.0	0.00	0.00	120.0	0.0	0.0	0.0	0.00	0.00	0.00
160.0	0.00	0.00	160.0	0.0	0.0	0.0	0.00	0.00	0.00
200.0	0.00	0.00	200.0	0.0	0.0	0.0	0.00	0.00	0.00
240.0	0.00	0.00	240.0	0.0	0.0	0.0	0.00	0.00	0.00
280.0	0.00	0.00	280.0	0.0	0.0	0.0	0.00	0.00	0.00
320.0	0.00	0.00	320.0	0.0	0.0	0.0	0.00	0.00	0.00
360.0	0.00	0.00	360.0	0.0	0.0	0.0	0.00	0.00	0.00
400.0	0.00	0.00	400.0	0.0	0.0	0.0	0.00	0.00	0.00
440.0	1.20	145.21	440.0	-0.3	0.2	0.4	3.00	3.00	0.00
480.0	2.40	145.21	480.0	-1.4	1.0	1.7	3.00	3.00	0.00
520.0	3.60	145.21	519.9	-3.1	2.2	3.8	3.00	3.00	0.00
560.0	4.80	145.21	559.8	-5.5	3.8	6.7	3.00	3.00	0.00
600.0	6.00	145.21	599.6	-8.6	6.0	10.5	3.00	3.00	0.00
640.0	7.20	145.21	639.4	-12.4	8.6	15.1	3.00	3.00	0.00
680.0	8.40	145.21	679.0	-16.8	11.7	20.5	3.00	3.00	0.00
720.0	9.60	145.21	718.5	-22.0	15.3	26.7	3.00	3.00	0.00
760.0	10.80	145.21	757.9	-27.8	19.3	33.8	3.00	3.00	0.00
800.0	12.00	145.21	797.1	-34.3	23.8	41.7	3.00	3.00	0.00
840.0	13.20	145.21	836.1	-41.4	28.8	50.5	3.00	3.00	0.00
880.0	14.40	145.21	875.0	-49.3	34.2	60.0	3.00	3.00	0.00
920.0	15.60	145.21	913.6	-57.8	40.1	70.4	3.00	3.00	0.00
960.0	16.80	145.21	952.0	-66.9	46.5	81.5	3.00	3.00	0.00
1,000.0	18.00	145.21	990.2	-76.8	53.3	93.5	3.00	3.00	0.00
1,040.0	19.20	145.21	1,028.1	-87.2	60.6	106.2	3.00	3.00	0.00
1,080.0	20.40	145.21	1,065.7	-98.4	68.4	119.8	3.00	3.00	0.00
1,120.0	21.60	145.21	1,103.1	-110.1	76.5	134.1	3.00	3.00	0.00
1,160.0	22.80	145.21	1,140.1	-122.5	85.2	149.2	3.00	3.00	0.00
1,200.0	24.00	145.21	1,176.8	-135.6	94.2	165.1	3.00	3.00	0.00
1,240.0	25.20	145.21	1,213.2	-149.3	103.7	181.8	3.00	3.00	0.00
1,280.0	26.40	145.21	1,249.2	-163.6	113.7	199.2	3.00	3.00	0.00
1,320.0	27.60	145.21	1,284.8	-178.5	124.0	217.3	3.00	3.00	0.00
1,360.0	28.80	145.21	1,320.1	-194.0	134.8	236.2	3.00	3.00	0.00
1,372.8	29.18	145.21	1,331.3	-199.1	138.3	242.4	3.00	3.00	0.00
1,400.0	29.18	145.21	1,355.0	-210.0	145.9	255.7	0.00	0.00	0.00
1,440.0	29.18	145.21	1,389.9	-226.0	157.0	275.2	0.00	0.00	0.00
1,480.0	29.18	145.21	1,424.9	-242.0	168.2	294.7	0.00	0.00	0.00
1,520.0	29.18	145.21	1,459.8	-258.0	179.3	314.2	0.00	0.00	0.00
1,560.0	29.18	145.21	1,494.7	-274.1	190.4	333.7	0.00	0.00	0.00
1,600.0	29.18	145.21	1,529.6	-290.1	201.6	353.2	0.00	0.00	0.00
1,640.0	29.18	145.21	1,564.6	-306.1	212.7	372.7	0.00	0.00	0.00
1,680.0	29.18	145.21	1,599.5	-322.1	223.8	392.2	0.00	0.00	0.00
1,720.0	29.18	145.21	1,634.4	-338.1	235.0	411.7	0.00	0.00	0.00
1,760.0	29.18	145.21	1,669.3	-354.1	246.1	431.2	0.00	0.00	0.00
1,800.0	29.18	145.21	1,704.2	-370.2	257.2	450.7	0.00	0.00	0.00
1,840.0	29.18	145.21	1,739.2	-386.2	268.3	470.3	0.00	0.00	0.00
1,880.0	29.18	145.21	1,774.1	-402.2	279.5	489.8	0.00	0.00	0.00
1,920.0	29.18	145.21	1,809.0	-418.2	290.6	509.3	0.00	0.00	0.00
1,960.0	29.18	145.21	1,843.9	-434.2	301.7	528.8	0.00	0.00	0.00
2,000.0	29.18	145.21	1,878.9	-450.2	312.9	548.3	0.00	0.00	0.00
2,040.0	29.18	145.21	1,913.8	-466.3	324.0	567.8	0.00	0.00	0.00
2,080.0	29.18	145.21	1,948.7	-482.3	335.1	587.3	0.00	0.00	0.00

Database:	EDM den0-adp01 Server Data	Local Co-ordinate Reference:	Well MAIN Y3 6-8-31
Company:	Mineral Resources Inc	TVD Reference:	WELL @ 4673.0ft (Original Well Elev)
Project:	SEC.31-T5N-R65W	MD Reference:	WELL @ 4673.0ft (Original Well Elev)
Site:	PAD Y SEC.31-T5N-R65W	North Reference:	True
Well:	MAIN Y3 6-8-31	Survey Calculation Method:	Minimum Curvature
Wellbore:	Wellbore #1		
Design:	Plan #6 (3-29-10)		

Planned Survey									
Measured Depth (ft)	Inclination (°)	Azimuth (°)	Vertical Depth (ft)	+N/-S (ft)	+E/-W (ft)	Vertical Section (ft)	Dogleg Rate (°/100ft)	Build Rate (°/100ft)	Turn Rate (°/100ft)
2,120.0	29.18	145.21	1,983.6	-498.3	346.3	606.8	0.00	0.00	0.00
2,160.0	29.18	145.21	2,018.6	-514.3	357.4	626.3	0.00	0.00	0.00
2,200.0	29.18	145.21	2,053.5	-530.3	368.5	645.8	0.00	0.00	0.00
2,240.0	29.18	145.21	2,088.4	-546.3	379.6	665.3	0.00	0.00	0.00
2,280.0	29.18	145.21	2,123.3	-562.4	390.8	684.8	0.00	0.00	0.00
2,320.0	29.18	145.21	2,158.2	-578.4	401.9	704.3	0.00	0.00	0.00
2,360.0	29.18	145.21	2,193.2	-594.4	413.0	723.8	0.00	0.00	0.00
2,400.0	29.18	145.21	2,228.1	-610.4	424.2	743.3	0.00	0.00	0.00
2,440.0	29.18	145.21	2,263.0	-626.4	435.3	762.8	0.00	0.00	0.00
2,480.0	29.18	145.21	2,297.9	-642.4	446.4	782.3	0.00	0.00	0.00
2,520.0	29.18	145.21	2,332.9	-658.5	457.6	801.8	0.00	0.00	0.00
2,560.0	29.18	145.21	2,367.8	-674.5	468.7	821.3	0.00	0.00	0.00
2,600.0	29.18	145.21	2,402.7	-690.5	479.8	840.8	0.00	0.00	0.00
2,640.0	29.18	145.21	2,437.6	-706.5	490.9	860.3	0.00	0.00	0.00
2,680.0	29.18	145.21	2,472.5	-722.5	502.1	879.8	0.00	0.00	0.00
2,720.0	29.18	145.21	2,507.5	-738.5	513.2	899.3	0.00	0.00	0.00
2,760.0	29.18	145.21	2,542.4	-754.6	524.3	918.9	0.00	0.00	0.00
2,800.0	29.18	145.21	2,577.3	-770.6	535.5	938.4	0.00	0.00	0.00
2,840.0	29.18	145.21	2,612.2	-786.6	546.6	957.9	0.00	0.00	0.00
2,880.0	29.18	145.21	2,647.2	-802.6	557.7	977.4	0.00	0.00	0.00
2,920.0	29.18	145.21	2,682.1	-818.6	568.9	996.9	0.00	0.00	0.00
2,960.0	29.18	145.21	2,717.0	-834.7	580.0	1,016.4	0.00	0.00	0.00
3,000.0	29.18	145.21	2,751.9	-850.7	591.1	1,035.9	0.00	0.00	0.00
3,040.0	29.18	145.21	2,786.8	-866.7	602.2	1,055.4	0.00	0.00	0.00
3,080.0	29.18	145.21	2,821.8	-882.7	613.4	1,074.9	0.00	0.00	0.00
3,120.0	29.18	145.21	2,856.7	-898.7	624.5	1,094.4	0.00	0.00	0.00
3,160.0	29.18	145.21	2,891.6	-914.7	635.6	1,113.9	0.00	0.00	0.00
3,200.0	29.18	145.21	2,926.5	-930.8	646.8	1,133.4	0.00	0.00	0.00
3,240.0	29.18	145.21	2,961.5	-946.8	657.9	1,152.9	0.00	0.00	0.00
3,280.0	29.18	145.21	2,996.4	-962.8	669.0	1,172.4	0.00	0.00	0.00
3,320.0	29.18	145.21	3,031.3	-978.8	680.2	1,191.9	0.00	0.00	0.00
3,360.0	29.18	145.21	3,066.2	-994.8	691.3	1,211.4	0.00	0.00	0.00
3,400.0	29.18	145.21	3,101.1	-1,010.8	702.4	1,230.9	0.00	0.00	0.00
3,440.0	29.18	145.21	3,136.1	-1,026.9	713.5	1,250.4	0.00	0.00	0.00
3,480.0	29.18	145.21	3,171.0	-1,042.9	724.7	1,269.9	0.00	0.00	0.00
3,520.0	29.18	145.21	3,205.9	-1,058.9	735.8	1,289.4	0.00	0.00	0.00
3,560.0	29.18	145.21	3,240.8	-1,074.9	746.9	1,308.9	0.00	0.00	0.00
3,600.0	29.18	145.21	3,275.8	-1,090.9	758.1	1,328.4	0.00	0.00	0.00
3,640.0	29.18	145.21	3,310.7	-1,106.9	769.2	1,348.0	0.00	0.00	0.00
3,680.0	29.18	145.21	3,345.6	-1,123.0	780.3	1,367.5	0.00	0.00	0.00
3,720.0	29.18	145.21	3,380.5	-1,139.0	791.5	1,387.0	0.00	0.00	0.00
3,760.0	29.18	145.21	3,415.4	-1,155.0	802.6	1,406.5	0.00	0.00	0.00
3,800.0	29.18	145.21	3,450.4	-1,171.0	813.7	1,426.0	0.00	0.00	0.00
3,840.0	29.18	145.21	3,485.3	-1,187.0	824.8	1,445.5	0.00	0.00	0.00
3,880.0	29.18	145.21	3,520.2	-1,203.0	836.0	1,465.0	0.00	0.00	0.00
3,920.0	29.18	145.21	3,555.1	-1,219.1	847.1	1,484.5	0.00	0.00	0.00
3,960.0	29.18	145.21	3,590.1	-1,235.1	858.2	1,504.0	0.00	0.00	0.00
4,000.0	29.18	145.21	3,625.0	-1,251.1	869.4	1,523.5	0.00	0.00	0.00
4,040.0	29.18	145.21	3,659.9	-1,267.1	880.5	1,543.0	0.00	0.00	0.00
4,080.0	29.18	145.21	3,694.8	-1,283.1	891.6	1,562.5	0.00	0.00	0.00
4,120.0	29.18	145.21	3,729.8	-1,299.1	902.7	1,582.0	0.00	0.00	0.00
4,160.0	29.18	145.21	3,764.7	-1,315.2	913.9	1,601.5	0.00	0.00	0.00
4,200.0	29.18	145.21	3,799.6	-1,331.2	925.0	1,621.0	0.00	0.00	0.00
4,240.0	29.18	145.21	3,834.5	-1,347.2	936.1	1,640.5	0.00	0.00	0.00

Database:	EDM den0-adp01 Server Data	Local Co-ordinate Reference:	Well MAIN Y3 6-8-31
Company:	Mineral Resources Inc	TVD Reference:	WELL @ 4673.0ft (Original Well Elev)
Project:	SEC.31-T5N-R65W	MD Reference:	WELL @ 4673.0ft (Original Well Elev)
Site:	PAD Y SEC.31-T5N-R65W	North Reference:	True
Well:	MAIN Y3 6-8-31	Survey Calculation Method:	Minimum Curvature
Wellbore:	Wellbore #1		
Design:	Plan #6 (3-29-10)		

Planned Survey									
Measured Depth (ft)	Inclination (°)	Azimuth (°)	Vertical Depth (ft)	+N/-S (ft)	+E/-W (ft)	Vertical Section (ft)	Dogleg Rate (°/100ft)	Build Rate (°/100ft)	Turn Rate (°/100ft)
4,280.0	29.18	145.21	3,869.4	-1,363.2	947.3	1,660.0	0.00	0.00	0.00
4,320.0	29.18	145.21	3,904.4	-1,379.2	958.4	1,679.5	0.00	0.00	0.00
4,360.0	29.18	145.21	3,939.3	-1,395.2	969.5	1,699.0	0.00	0.00	0.00
4,400.0	29.18	145.21	3,974.2	-1,411.3	980.7	1,718.5	0.00	0.00	0.00
4,440.0	29.18	145.21	4,009.1	-1,427.3	991.8	1,738.0	0.00	0.00	0.00
4,480.0	29.18	145.21	4,044.1	-1,443.3	1,002.9	1,757.5	0.00	0.00	0.00
4,520.0	29.18	145.21	4,079.0	-1,459.3	1,014.0	1,777.0	0.00	0.00	0.00
4,560.0	29.18	145.21	4,113.9	-1,475.3	1,025.2	1,796.6	0.00	0.00	0.00
4,600.0	29.18	145.21	4,148.8	-1,491.4	1,036.3	1,816.1	0.00	0.00	0.00
4,640.0	29.18	145.21	4,183.7	-1,507.4	1,047.4	1,835.6	0.00	0.00	0.00
4,680.0	29.18	145.21	4,218.7	-1,523.4	1,058.6	1,855.1	0.00	0.00	0.00
4,720.0	29.18	145.21	4,253.6	-1,539.4	1,069.7	1,874.6	0.00	0.00	0.00
4,760.0	29.18	145.21	4,288.5	-1,555.4	1,080.8	1,894.1	0.00	0.00	0.00
4,800.0	29.18	145.21	4,323.4	-1,571.4	1,092.0	1,913.6	0.00	0.00	0.00
4,840.0	29.18	145.21	4,358.4	-1,587.5	1,103.1	1,933.1	0.00	0.00	0.00
4,880.0	29.18	145.21	4,393.3	-1,603.5	1,114.2	1,952.6	0.00	0.00	0.00
4,920.0	29.18	145.21	4,428.2	-1,619.5	1,125.3	1,972.1	0.00	0.00	0.00
4,960.0	29.18	145.21	4,463.1	-1,635.5	1,136.5	1,991.6	0.00	0.00	0.00
5,000.0	29.18	145.21	4,498.0	-1,651.5	1,147.6	2,011.1	0.00	0.00	0.00
5,040.0	29.18	145.21	4,533.0	-1,667.5	1,158.7	2,030.6	0.00	0.00	0.00
5,080.0	29.18	145.21	4,567.9	-1,683.6	1,169.9	2,050.1	0.00	0.00	0.00
5,120.0	29.18	145.21	4,602.8	-1,699.6	1,181.0	2,069.6	0.00	0.00	0.00
5,160.0	29.18	145.21	4,637.7	-1,715.6	1,192.1	2,089.1	0.00	0.00	0.00
5,200.0	29.18	145.21	4,672.7	-1,731.6	1,203.3	2,108.6	0.00	0.00	0.00
5,240.0	29.18	145.21	4,707.6	-1,747.6	1,214.4	2,128.1	0.00	0.00	0.00
5,280.0	29.18	145.21	4,742.5	-1,763.6	1,225.5	2,147.6	0.00	0.00	0.00
5,320.0	29.18	145.21	4,777.4	-1,779.7	1,236.6	2,167.1	0.00	0.00	0.00
5,360.0	29.18	145.21	4,812.3	-1,795.7	1,247.8	2,186.6	0.00	0.00	0.00
5,400.0	29.18	145.21	4,847.3	-1,811.7	1,258.9	2,206.1	0.00	0.00	0.00
5,440.0	29.18	145.21	4,882.2	-1,827.7	1,270.0	2,225.7	0.00	0.00	0.00
5,480.0	29.18	145.21	4,917.1	-1,843.7	1,281.2	2,245.2	0.00	0.00	0.00
5,520.0	29.18	145.21	4,952.0	-1,859.7	1,292.3	2,264.7	0.00	0.00	0.00
5,560.0	29.18	145.21	4,987.0	-1,875.8	1,303.4	2,284.2	0.00	0.00	0.00
5,600.0	29.18	145.21	5,021.9	-1,891.8	1,314.6	2,303.7	0.00	0.00	0.00
5,640.0	29.18	145.21	5,056.8	-1,907.8	1,325.7	2,323.2	0.00	0.00	0.00
5,680.0	29.18	145.21	5,091.7	-1,923.8	1,336.8	2,342.7	0.00	0.00	0.00
5,720.0	29.18	145.21	5,126.6	-1,939.8	1,347.9	2,362.2	0.00	0.00	0.00
5,760.0	29.18	145.21	5,161.6	-1,955.8	1,359.1	2,381.7	0.00	0.00	0.00
5,800.0	29.18	145.21	5,196.5	-1,971.9	1,370.2	2,401.2	0.00	0.00	0.00
5,840.0	29.18	145.21	5,231.4	-1,987.9	1,381.3	2,420.7	0.00	0.00	0.00
5,880.0	29.18	145.21	5,266.3	-2,003.9	1,392.5	2,440.2	0.00	0.00	0.00
5,920.0	29.18	145.21	5,301.3	-2,019.9	1,403.6	2,459.7	0.00	0.00	0.00
5,960.0	29.18	145.21	5,336.2	-2,035.9	1,414.7	2,479.2	0.00	0.00	0.00
6,000.0	29.18	145.21	5,371.1	-2,052.0	1,425.9	2,498.7	0.00	0.00	0.00
6,040.0	29.18	145.21	5,406.0	-2,068.0	1,437.0	2,518.2	0.00	0.00	0.00
6,080.0	29.18	145.21	5,441.0	-2,084.0	1,448.1	2,537.7	0.00	0.00	0.00
6,120.0	29.18	145.21	5,475.9	-2,100.0	1,459.2	2,557.2	0.00	0.00	0.00
6,160.0	29.18	145.21	5,510.8	-2,116.0	1,470.4	2,576.7	0.00	0.00	0.00
6,200.0	29.18	145.21	5,545.7	-2,132.0	1,481.5	2,596.2	0.00	0.00	0.00
6,240.0	29.18	145.21	5,580.6	-2,148.1	1,492.6	2,615.7	0.00	0.00	0.00
6,280.0	29.18	145.21	5,615.6	-2,164.1	1,503.8	2,635.2	0.00	0.00	0.00
6,320.0	29.18	145.21	5,650.5	-2,180.1	1,514.9	2,654.7	0.00	0.00	0.00
6,360.0	29.18	145.21	5,685.4	-2,196.1	1,526.0	2,674.3	0.00	0.00	0.00
6,400.0	29.18	145.21	5,720.3	-2,212.1	1,537.2	2,693.8	0.00	0.00	0.00

Database:	EDM den0-adp01 Server Data	Local Co-ordinate Reference:	Well MAIN Y3 6-8-31
Company:	Mineral Resources Inc	TVD Reference:	WELL @ 4673.0ft (Original Well Elev)
Project:	SEC.31-T5N-R65W	MD Reference:	WELL @ 4673.0ft (Original Well Elev)
Site:	PAD Y SEC.31-T5N-R65W	North Reference:	True
Well:	MAIN Y3 6-8-31	Survey Calculation Method:	Minimum Curvature
Wellbore:	Wellbore #1		
Design:	Plan #6 (3-29-10)		

Planned Survey									
Measured Depth (ft)	Inclination (°)	Azimuth (°)	Vertical Depth (ft)	+N/-S (ft)	+E/-W (ft)	Vertical Section (ft)	Dogleg Rate (°/100ft)	Build Rate (°/100ft)	Turn Rate (°/100ft)
6,440.0	29.18	145.21	5,755.3	-2,228.1	1,548.3	2,713.3	0.00	0.00	0.00
6,480.0	29.18	145.21	5,790.2	-2,244.2	1,559.4	2,732.8	0.00	0.00	0.00
6,520.0	29.18	145.21	5,825.1	-2,260.2	1,570.5	2,752.3	0.00	0.00	0.00
6,560.0	29.18	145.21	5,860.0	-2,276.2	1,581.7	2,771.8	0.00	0.00	0.00
6,600.0	29.18	145.21	5,894.9	-2,292.2	1,592.8	2,791.3	0.00	0.00	0.00
6,640.0	29.18	145.21	5,929.9	-2,308.2	1,603.9	2,810.8	0.00	0.00	0.00
6,680.0	29.18	145.21	5,964.8	-2,324.2	1,615.1	2,830.3	0.00	0.00	0.00
6,720.0	29.18	145.21	5,999.7	-2,340.3	1,626.2	2,849.8	0.00	0.00	0.00
6,760.0	29.18	145.21	6,034.6	-2,356.3	1,637.3	2,869.3	0.00	0.00	0.00
6,771.4	29.18	145.21	6,044.6	-2,360.8	1,640.5	2,874.8	0.00	0.00	0.00
6,800.0	28.61	145.21	6,069.6	-2,372.2	1,648.4	2,888.7	2.00	-2.00	0.00
6,840.0	27.81	145.21	6,104.9	-2,387.7	1,659.2	2,907.6	2.00	-2.00	0.00
6,880.0	27.01	145.21	6,140.4	-2,402.8	1,669.7	2,926.0	2.00	-2.00	0.00
6,920.0	26.21	145.21	6,176.1	-2,417.6	1,679.9	2,943.9	2.00	-2.00	0.00
6,960.0	25.41	145.21	6,212.2	-2,431.9	1,689.8	2,961.3	2.00	-2.00	0.00
7,000.0	24.61	145.21	6,248.4	-2,445.7	1,699.5	2,978.2	2.00	-2.00	0.00
7,040.0	23.81	145.21	6,284.9	-2,459.2	1,708.9	2,994.6	2.00	-2.00	0.00
7,080.0	23.01	145.21	6,321.6	-2,472.3	1,717.9	3,010.5	2.00	-2.00	0.00
7,120.0	22.21	145.21	6,358.5	-2,484.9	1,726.7	3,025.9	2.00	-2.00	0.00
7,160.0	21.41	145.21	6,395.7	-2,497.1	1,735.2	3,040.8	2.00	-2.00	0.00
7,200.0	20.61	145.21	6,433.0	-2,508.9	1,743.4	3,055.1	2.00	-2.00	0.00
7,240.0	19.81	145.21	6,470.5	-2,520.2	1,751.3	3,068.9	2.00	-2.00	0.00
7,280.0	19.01	145.21	6,508.3	-2,531.1	1,758.8	3,082.2	2.00	-2.00	0.00
7,320.0	18.21	145.21	6,546.2	-2,541.6	1,766.1	3,095.0	2.00	-2.00	0.00
7,360.0	17.41	145.21	6,584.2	-2,551.7	1,773.1	3,107.2	2.00	-2.00	0.00
7,400.0	16.61	145.21	6,622.5	-2,561.3	1,779.8	3,118.9	2.00	-2.00	0.00
7,440.0	15.81	145.21	6,660.9	-2,570.5	1,786.2	3,130.1	2.00	-2.00	0.00
7,480.0	15.01	145.21	6,699.5	-2,579.2	1,792.2	3,140.7	2.00	-2.00	0.00
7,480.6	15.00	145.21	6,700.0	-2,579.3	1,792.3	3,140.9	2.00	-2.00	0.00
DRILL TARGET 199'FSL, 1296'FEL									
7,520.0	15.00	145.21	6,738.1	-2,587.7	1,798.1	3,151.1	0.00	0.00	0.00
7,525.0	15.00	145.21	6,743.0	-2,588.8	1,798.9	3,152.4	0.00	0.00	0.00
PERMIT TARGET 50'FSL, 1210'FEL									
7,532.3	15.00	145.21	6,750.0	-2,590.3	1,799.9	3,154.3	0.00	0.00	0.00
NIOBRARA									
7,560.0	15.00	145.21	6,776.7	-2,596.2	1,804.0	3,161.4	0.00	0.00	0.00
7,600.0	15.00	145.21	6,815.4	-2,604.7	1,809.9	3,171.8	0.00	0.00	0.00
7,640.0	15.00	145.21	6,854.0	-2,613.2	1,815.8	3,182.1	0.00	0.00	0.00
7,680.0	15.00	145.21	6,892.6	-2,621.7	1,821.8	3,192.5	0.00	0.00	0.00
7,720.0	15.00	145.21	6,931.3	-2,630.2	1,827.7	3,202.9	0.00	0.00	0.00
7,760.0	15.00	145.21	6,969.9	-2,638.7	1,833.6	3,213.2	0.00	0.00	0.00
7,800.0	15.00	145.21	7,008.6	-2,647.2	1,839.5	3,223.6	0.00	0.00	0.00
7,840.0	15.00	145.21	7,047.2	-2,655.7	1,845.4	3,233.9	0.00	0.00	0.00
7,880.0	15.00	145.21	7,085.8	-2,664.2	1,851.3	3,244.3	0.00	0.00	0.00
7,910.2	15.00	145.21	7,115.0	-2,670.6	1,855.8	3,252.1	0.00	0.00	0.00
CODELL									
7,920.0	15.00	145.21	7,124.5	-2,672.7	1,857.2	3,254.6	0.00	0.00	0.00
7,960.0	15.00	145.21	7,163.1	-2,681.2	1,863.1	3,265.0	0.00	0.00	0.00
8,000.0	15.00	145.21	7,201.7	-2,689.7	1,869.0	3,275.3	0.00	0.00	0.00
8,040.0	15.00	145.21	7,240.4	-2,698.2	1,874.9	3,285.7	0.00	0.00	0.00
8,065.5	15.00	145.21	7,265.0	-2,703.6	1,878.7	3,292.3	0.00	0.00	0.00
HARDLINE 50'S OF MAIN Y3 BHL									

Database:	EDM den0-adp01 Server Data	Local Co-ordinate Reference:	Well MAIN Y3 6-8-31
Company:	Mineral Resources Inc	TVD Reference:	WELL @ 4673.0ft (Original Well Elev)
Project:	SEC.31-T5N-R65W	MD Reference:	WELL @ 4673.0ft (Original Well Elev)
Site:	PAD Y SEC.31-T5N-R65W	North Reference:	True
Well:	MAIN Y3 6-8-31	Survey Calculation Method:	Minimum Curvature
Wellbore:	Wellbore #1		
Design:	Plan #6 (3-29-10)		

Targets									
Target Name									
- hit/miss target	Dip Angle	Dip Dir.	TVD	+N/-S	+E/-W	Northing	Easting	Latitude	Longitude
- Shape	(°)	(°)	(ft)	(ft)	(ft)	(ft)	(ft)		
DRILL TARGET 199'F	0.00	0.00	6,700.0	-2,579.3	1,792.3	1,370,994.33	3,222,563.13	40° 20' 56.507 N	104° 42' 5.291 W
- plan hits target center									
- Point									
HARDLINE 50'S OF M	0.00	0.00	7,265.0	-2,778.6	1,778.7	1,370,794.92	3,222,551.31	40° 20' 54.538 N	104° 42' 5.467 W
- plan misses target center by 125.0ft at 8065.5ft MD (7265.0 TVD, -2703.6 N, 1878.7 E)									
- Polygon									
Point 1			7,265.0	0.0	0.0	1,370,794.92	3,222,551.31		
Point 2			7,265.0	0.0	200.0	1,370,796.71	3,222,751.29		
PERMIT TARGET 50'	0.00	0.00	6,700.0	-2,728.6	1,878.7	1,370,845.82	3,222,650.82	40° 20' 55.032 N	104° 42' 4.176 W
- plan misses target center by 166.6ft at 7525.0ft MD (6743.0 TVD, -2588.8 N, 1798.9 E)									
- Point									

Formations						
Measured Depth	Vertical Depth	Name	Lithology	Dip	Dip Direction	
(ft)	(ft)			(°)	(°)	
7,532.3	6,750.0	NIOBRARA		0.00		
7,910.2	7,115.0	CODELL		0.00		
	7,515.0	J SAND		0.00		



Mineral Resources Inc

SEC.31-T5N-R65W

PAD Y SEC.31-T5N-R65W

MAIN Y3 6-8-31

Wellbore #1

Plan #6 (3-29-10)

Anticollision Report

05 April, 2010

Company:	Mineral Resources Inc	Local Co-ordinate Reference:	Well MAIN Y3 6-8-31
Project:	SEC.31-T5N-R65W	TVD Reference:	WELL @ 4673.0ft (Original Well Elev)
Reference Site:	PAD Y SEC.31-T5N-R65W	MD Reference:	WELL @ 4673.0ft (Original Well Elev)
Site Error:	0.0ft	North Reference:	True
Reference Well:	MAIN Y3 6-8-31	Survey Calculation Method:	Minimum Curvature
Well Error:	0.0ft	Output errors are at	2.00 sigma
Reference Wellbore	Wellbore #1	Database:	EDM den0-adp01 Server Data
Reference Design:	Plan #6 (3-29-10)	Offset TVD Reference:	Offset Datum

Reference	Plan #6 (3-29-10)		
Filter type:	NO GLOBAL FILTER: Using user defined selection & filtering criteria		
Interpolation Method:	MD Interval 100.0ft	Error Model:	ISCWSA
Depth Range:	Unlimited	Scan Method:	Closest Approach 3D
Results Limited by:	Maximum center-center distance of 2,000.0ft	Error Surface:	Elliptical Conic
Warning Levels Evaluated at:	2.00 Sigma		

Survey Tool Program		Date	4/5/2010		
From (ft)	To (ft)	Survey (Wellbore)	Tool Name	Description	
0.0	8,065.5	Plan #6 (3-29-10) (Wellbore #1)	MWD	MWD - Standard	

Summary						
Site Name	Reference Measured Depth (ft)	Offset Measured Depth (ft)	Distance Between Centres (ft)	Distance Between Ellipses (ft)	Separation Factor	Warning
Offset Well - Wellbore - Design						
PAD Y SEC.31-T5N-R65W						
GOODNER Y4 7-1-6 - Wellbore #1 - Wellbore #1	776.5	782.6	196.7	192.2	43.300	CC
GOODNER Y4 7-1-6 - Wellbore #1 - Wellbore #1	800.0	805.0	196.8	192.0	41.189	ES
GOODNER Y4 7-1-6 - Wellbore #1 - Wellbore #1	4,300.0	4,272.7	387.6	354.8	11.807	SF
LASALLE PARK Y5 5-5-31 - Wellbore #1 - Wellbore #1	0.0	0.0	191.3			
LASALLE PARK Y5 5-5-31 - Wellbore #1 - Wellbore #1	5,300.0	5,288.0	1,026.9	986.6	25.466	SF
PAD Z SEC.31-T5N-R65W						
GODFREY Z5 4-4-31 - Wellbore #1 - Plan #4 (3-29-10)	537.7	537.6	13.5	11.4	6.257	CC, ES
GODFREY Z5 4-4-31 - Wellbore #1 - Plan #4 (3-29-10)	600.0	599.6	14.6	12.2	6.008	SF

Offset Design													Offset Site Error:		0.0 ft
Survey Program: 93-MWD													Offset Well Error:		0.0 ft
Reference		Offset		Semi Major Axis			Distance								
Measured Depth (ft)	Vertical Depth (ft)	Measured Depth (ft)	Vertical Depth (ft)	Reference (ft)	Offset (ft)	Highside Toolface (°)	Offset Wellbore Centre +N/-S (ft)	+E/-W (ft)	Between Centres (ft)	Between Ellipses (ft)	Minimum Separation (ft)	Separation Factor	Warning		
0.0	0.0	0.0	0.0	0.0	0.0	-111.69	-76.5	-192.3	207.0						
100.0	100.0	100.2	100.2	0.1	0.1	-111.68	-76.5	-192.3	206.9	206.7	0.23	889.138			
200.0	200.0	202.0	202.0	0.3	0.3	-111.77	-76.5	-191.7	206.4	205.8	0.68	303.286			
300.0	300.0	303.6	303.4	0.6	0.6	-113.30	-81.1	-188.2	205.0	203.8	1.14	179.346			
400.0	400.0	405.5	404.5	0.8	0.9	-116.95	-92.1	-181.2	203.3	201.6	1.65	122.922			
500.0	500.0	506.3	503.4	1.0	1.3	93.30	-107.4	-170.0	201.2	199.0	2.24	89.765			
600.0	599.6	609.7	603.7	1.2	1.8	88.44	-127.3	-154.6	199.7	196.8	2.94	67.870			
700.0	698.8	709.3	698.4	1.4	2.3	83.33	-150.2	-134.4	197.4	193.6	3.79	52.076			
776.5	774.1	782.6	766.9	1.7	2.9	79.28	-170.2	-117.2	196.7	192.2	4.54	43.300	CC		
800.0	797.1	805.0	787.6	1.8	3.0	78.06	-176.7	-111.7	196.8	192.0	4.78	41.189	ES		
900.0	894.3	900.6	874.8	2.2	3.8	72.83	-206.9	-86.8	198.2	192.3	5.91	33.562			
1,000.0	990.2	993.9	957.3	2.7	4.7	67.52	-240.7	-59.4	201.7	194.5	7.14	28.236			
1,100.0	1,084.4	1,085.1	1,035.2	3.3	5.7	62.31	-278.1	-30.2	207.8	199.4	8.45	24.598			
1,200.0	1,176.8	1,179.8	1,113.7	4.1	6.8	57.42	-320.5	1.6	216.2	206.4	9.77	22.130			
1,300.0	1,267.1	1,279.7	1,196.0	4.9	7.9	53.51	-365.5	35.9	223.1	211.9	11.14	20.019			
1,400.0	1,355.0	1,382.1	1,280.2	5.8	9.0	50.61	-411.2	72.2	227.0	214.4	12.57	18.052			
1,500.0	1,442.3	1,488.1	1,367.7	6.8	10.2	47.77	-456.3	111.5	228.0	214.1	13.95	16.350			
1,554.7	1,490.1	1,543.0	1,413.2	7.4	10.8	46.28	-478.9	132.1	228.0	213.3	14.66	15.552			
1,600.0	1,529.6	1,588.0	1,450.4	7.8	11.3	44.97	-497.4	149.4	228.0	212.8	15.21	14.992			

CC - Min centre to center distance or convergent point, SF - min separation factor, ES - min ellipse separation

Company:	Mineral Resources Inc	Local Co-ordinate Reference:	Well MAIN Y3 6-8-31
Project:	SEC.31-T5N-R65W	TVD Reference:	WELL @ 4673.0ft (Original Well Elev)
Reference Site:	PAD Y SEC.31-T5N-R65W	MD Reference:	WELL @ 4673.0ft (Original Well Elev)
Site Error:	0.0ft	North Reference:	True
Reference Well:	MAIN Y3 6-8-31	Survey Calculation Method:	Minimum Curvature
Well Error:	0.0ft	Output errors are at	2.00 sigma
Reference Wellbore	Wellbore #1	Database:	EDM den0-adp01 Server Data
Reference Design:	Plan #6 (3-29-10)	Offset TVD Reference:	Offset Datum

PAD Y SEC.31-T5N-R65W - GOODNER Y4 7-1-6 - Wellbore #1 - Wellbore #1													Offset Site Error:	0.0 ft
Survey Program: 93-MWD													Offset Well Error:	0.0 ft
Reference		Offset		Semi Major Axis			Distance							
Measured Depth	Vertical Depth	Measured Depth	Vertical Depth	Reference	Offset	Highside Toolface	Offset Wellbore Centre		Between Centres	Between Ellipses	Minimum Separation	Separation Factor	Warning	
(ft)	(ft)	(ft)	(ft)	(ft)	(ft)	(°)	+N/-S (ft)	+E/-W (ft)	(ft)	(ft)	(ft)			
1,700.0	1,616.9	1,682.0	1,527.5	8.8	12.4	42.12	-537.2	185.7	229.7	213.4	16.34	14.059		
1,800.0	1,704.2	1,778.2	1,605.6	9.8	13.5	39.26	-579.4	222.6	233.9	216.6	17.34	13.489		
1,900.0	1,791.6	1,875.5	1,684.5	10.8	14.7	36.65	-623.1	259.1	239.8	221.5	18.25	13.136		
2,000.0	1,878.9	1,979.2	1,768.8	11.9	15.8	33.99	-669.2	298.1	245.5	226.4	19.08	12.869		
2,100.0	1,966.2	2,081.5	1,852.5	12.9	17.0	31.26	-713.1	337.6	250.1	230.4	19.77	12.655		
2,200.0	2,053.5	2,180.4	1,933.4	13.9	18.2	28.63	-754.8	376.1	254.7	234.3	20.35	12.516		
2,300.0	2,140.8	2,276.8	2,011.9	14.9	19.3	26.17	-796.2	413.6	260.6	239.7	20.86	12.490		
2,400.0	2,228.1	2,375.4	2,092.6	16.0	20.4	24.29	-839.8	449.8	267.7	246.2	21.46	12.475		
2,500.0	2,315.4	2,478.1	2,177.7	17.0	21.6	23.14	-885.7	484.4	274.5	252.3	22.23	12.348		
2,600.0	2,402.7	2,580.2	2,262.7	18.0	22.7	21.74	-929.8	519.9	280.1	257.2	22.87	12.246		
2,700.0	2,490.0	2,677.8	2,344.0	19.0	23.8	20.52	-971.9	553.6	285.8	262.3	23.52	12.152		
2,800.0	2,577.3	2,779.1	2,428.0	20.1	24.9	19.25	-1,016.1	588.9	292.3	268.1	24.13	12.112		
2,900.0	2,664.6	2,877.3	2,509.8	21.1	26.0	17.95	-1,058.1	623.6	298.1	273.4	24.68	12.077		
3,000.0	2,751.9	2,971.6	2,587.2	22.1	27.1	16.44	-1,098.9	658.7	305.5	280.4	25.12	12.162		
3,100.0	2,839.2	3,065.4	2,663.6	23.1	28.2	15.22	-1,141.3	692.9	314.8	289.2	25.64	12.280		
3,200.0	2,926.5	3,165.4	2,744.4	24.2	29.4	14.06	-1,187.4	729.4	325.4	299.2	26.19	12.425		
3,300.0	3,013.8	3,273.6	2,832.8	25.2	30.7	12.77	-1,235.7	768.9	334.5	307.8	26.70	12.525		
3,400.0	3,101.1	3,366.2	2,908.7	26.2	31.7	11.70	-1,276.6	802.7	343.1	315.9	27.22	12.605		
3,500.0	3,188.5	3,463.5	2,987.8	27.3	32.9	10.78	-1,321.0	837.9	353.3	325.5	27.81	12.705		
3,600.0	3,275.8	3,575.8	3,080.0	28.3	34.2	9.81	-1,371.2	877.8	362.2	333.8	28.44	12.737		
3,700.0	3,363.1	3,686.8	3,173.4	29.3	35.4	8.67	-1,416.6	917.0	367.1	338.1	28.98	12.665		
3,800.0	3,450.4	3,784.0	3,255.4	30.3	36.4	7.67	-1,455.9	951.3	371.6	342.1	29.52	12.590		
3,900.0	3,537.7	3,884.4	3,340.1	31.4	37.5	6.80	-1,497.0	986.0	376.4	346.3	30.11	12.499		
4,000.0	3,625.0	3,992.5	3,432.0	32.4	38.6	6.19	-1,541.8	1,021.4	380.6	349.8	30.82	12.349		
4,100.0	3,712.3	4,101.5	3,526.4	33.4	39.7	5.64	-1,584.5	1,055.4	381.6	350.1	31.53	12.102		
4,200.0	3,799.6	4,192.1	3,604.7	34.5	40.6	5.08	-1,619.5	1,084.1	382.6	350.5	32.17	11.894		
4,300.0	3,886.9	4,272.7	3,673.0	35.5	41.5	4.67	-1,653.4	1,110.6	387.6	354.8	32.83	11.807 SF		
4,400.0	3,974.2	4,360.2	3,744.5	36.5	42.5	4.20	-1,693.2	1,141.3	397.6	364.0	33.52	11.860		
4,500.0	4,061.5	4,452.7	3,819.6	37.6	43.6	3.77	-1,736.3	1,174.0	408.9	374.6	34.26	11.935		
4,600.0	4,148.8	4,547.8	3,895.5	38.6	44.8	3.48	-1,782.6	1,207.8	422.4	387.4	35.04	12.054		
4,700.0	4,236.1	4,649.7	3,977.1	39.6	46.0	3.01	-1,831.1	1,244.8	435.3	399.5	35.83	12.151		
4,800.0	4,323.4	4,750.6	4,058.0	40.6	47.3	2.36	-1,878.0	1,282.7	448.1	411.5	36.57	12.252		
4,900.0	4,410.7	4,847.8	4,136.0	41.7	48.5	1.57	-1,922.1	1,320.4	460.6	423.3	37.29	12.351		
5,000.0	4,498.0	4,942.2	4,211.3	42.7	49.7	0.93	-1,965.9	1,356.7	474.1	436.0	38.05	12.459		
5,100.0	4,585.4	5,042.6	4,291.1	43.7	50.9	0.35	-2,013.1	1,395.2	488.1	449.3	38.86	12.560		
5,200.0	4,672.7	5,136.2	4,365.4	44.8	52.1	-0.29	-2,056.4	1,432.0	502.2	462.5	39.66	12.664		
5,300.0	4,760.0	5,233.9	4,442.4	45.8	53.4	-0.96	-2,102.1	1,471.2	517.3	476.9	40.49	12.777		
5,400.0	4,847.3	5,341.3	4,527.7	46.8	54.7	-1.56	-2,152.4	1,513.1	531.8	490.4	41.39	12.848		
5,500.0	4,934.6	5,454.8	4,619.2	47.9	56.0	-2.20	-2,203.5	1,556.4	544.0	501.6	42.33	12.851		
5,600.0	5,021.9	5,560.4	4,705.6	48.9	57.3	-2.91	-2,248.8	1,596.7	554.2	510.9	43.26	12.811		
5,700.0	5,109.2	5,657.0	4,784.8	49.9	58.4	-3.54	-2,290.2	1,633.5	564.3	520.1	44.17	12.776		
5,800.0	5,196.5	5,754.4	4,864.3	50.9	59.6	-4.07	-2,332.7	1,670.4	575.0	529.9	45.10	12.750		
5,900.0	5,283.8	5,861.2	4,951.7	52.0	60.8	-4.36	-2,380.9	1,708.3	585.4	539.4	46.05	12.713		
6,000.0	5,371.1	5,976.0	5,047.1	53.0	62.1	-4.54	-2,431.9	1,747.0	593.7	546.7	47.01	12.629		
6,100.0	5,458.4	6,076.1	5,131.0	54.0	63.2	-4.74	-2,475.0	1,780.1	600.3	552.4	47.91	12.530		
6,200.0	5,545.7	6,169.6	5,209.2	55.1	64.2	-4.99	-2,515.3	1,812.0	607.8	559.0	48.80	12.454		
6,300.0	5,633.0	6,277.3	5,299.1	56.1	65.4	-5.28	-2,561.8	1,848.9	615.4	565.6	49.77	12.365		
6,400.0	5,720.3	6,375.5	5,381.5	57.1	66.5	-5.43	-2,604.3	1,881.2	622.1	571.4	50.66	12.278		
6,500.0	5,807.6	6,476.0	5,465.6	58.2	67.6	-5.34	-2,649.6	1,912.3	628.9	577.4	51.51	12.210		
6,600.0	5,894.9	6,570.0	5,543.8	59.2	68.6	-5.10	-2,693.6	1,940.4	636.5	584.2	52.29	12.173		
6,700.0	5,982.2	6,668.1	5,625.2	60.2	69.7	-5.02	-2,738.6	1,971.5	644.7	591.6	53.14	12.133		
6,800.0	6,069.6	6,759.7	5,701.1	61.2	70.7	-5.09	-2,779.9	2,001.9	653.4	599.5	53.97	12.108		

Company:	Mineral Resources Inc	Local Co-ordinate Reference:	Well MAIN Y3 6-8-31
Project:	SEC.31-T5N-R65W	TVD Reference:	WELL @ 4673.0ft (Original Well Elev)
Reference Site:	PAD Y SEC.31-T5N-R65W	MD Reference:	WELL @ 4673.0ft (Original Well Elev)
Site Error:	0.0ft	North Reference:	True
Reference Well:	MAIN Y3 6-8-31	Survey Calculation Method:	Minimum Curvature
Well Error:	0.0ft	Output errors are at	2.00 sigma
Reference Wellbore	Wellbore #1	Database:	EDM den0-adp01 Server Data
Reference Design:	Plan #6 (3-29-10)	Offset TVD Reference:	Offset Datum

Offset Design PAD Y SEC.31-T5N-R65W - GOODNER Y4 7-1-6 - Wellbore #1 - Wellbore #1												Offset Site Error:	0.0 ft
Survey Program: 93-MWD												Offset Well Error:	0.0 ft
Reference	Offset	Semi Major Axis		Distance									
Measured Depth (ft)	Vertical Depth (ft)	Measured Depth (ft)	Vertical Depth (ft)	Reference (ft)	Offset (ft)	Highside Toolface (°)	Offset Wellbore Centre +N/-S (ft)	+E/-W (ft)	Between Centres (ft)	Between Ellipses (ft)	Minimum Separation (ft)	Separation Factor	Warning
6,900.0	6,158.2	6,860.8	5,784.6	62.0	71.9	-5.16	-2,825.7	2,035.7	665.1	610.4	54.72	12.156	
7,000.0	6,248.4	6,950.5	5,858.5	62.7	72.9	-5.36	-2,865.6	2,067.4	680.9	625.5	55.38	12.296	
7,100.0	6,340.0	7,040.5	5,931.9	63.3	74.0	-5.67	-2,905.2	2,100.9	701.3	645.3	55.99	12.525	
7,200.0	6,433.0	7,158.2	6,028.6	63.9	75.3	-5.89	-2,957.5	2,143.0	724.2	667.6	56.62	12.791	
7,300.0	6,527.2	7,294.0	6,142.8	64.5	76.8	-6.04	-3,015.2	2,188.8	747.5	690.2	57.20	13.067	
7,400.0	6,622.5	7,446.5	6,276.8	65.0	78.2	-6.28	-3,071.6	2,234.8	766.1	708.4	57.75	13.267	
7,500.0	6,718.8	7,558.4	6,376.7	65.4	79.2	-6.53	-3,109.6	2,267.5	785.5	727.3	58.14	13.510	
7,600.0	6,815.4	7,708.6	6,514.0	66.0	80.4	-6.84	-3,155.4	2,307.8	801.2	742.1	59.07	13.563	
7,700.0	6,912.0	7,825.5	6,622.6	66.5	81.2	-7.16	-3,186.7	2,337.1	812.9	753.0	59.88	13.574	
7,800.0	7,008.6	7,978.5	6,767.1	67.1	82.1	-7.59	-3,223.4	2,371.7	820.7	759.9	60.83	13.491	
7,900.0	7,105.2	8,120.9	6,904.2	67.6	82.9	-7.72	-3,253.7	2,395.4	822.0	760.5	61.56	13.353	
8,000.0	7,201.7	8,245.6	7,025.6	68.1	83.4	-7.89	-3,275.9	2,413.1	818.9	756.7	62.24	13.158	
8,065.5	7,265.0	8,317.9	7,096.3	68.5	83.7	-7.98	-3,288.0	2,422.4	815.9	753.2	62.64	13.024	

Company:	Mineral Resources Inc	Local Co-ordinate Reference:	Well MAIN Y3 6-8-31
Project:	SEC.31-T5N-R65W	TVD Reference:	WELL @ 4673.0ft (Original Well Elev)
Reference Site:	PAD Y SEC.31-T5N-R65W	MD Reference:	WELL @ 4673.0ft (Original Well Elev)
Site Error:	0.0ft	North Reference:	True
Reference Well:	MAIN Y3 6-8-31	Survey Calculation Method:	Minimum Curvature
Well Error:	0.0ft	Output errors are at	2.00 sigma
Reference Wellbore	Wellbore #1	Database:	EDM den0-adp01 Server Data
Reference Design:	Plan #6 (3-29-10)	Offset TVD Reference:	Offset Datum

Offset Design													Offset Site Error:	0.0 ft
Survey Program: 495-MWD													Offset Well Error:	0.0 ft
Reference		Offset		Semi Major Axis			Distance							Warning
Measured Depth (ft)	Vertical Depth (ft)	Measured Depth (ft)	Vertical Depth (ft)	Reference (ft)	Offset (ft)	Highside Toolface (°)	Offset Wellbore Centre +N/-S (ft)	+E/-W (ft)	Between Centres (ft)	Between Ellipses (ft)	Minimum Separation (ft)	Separation Factor		
0.0	0.0	0.0	0.0	0.0	0.0	-111.21	-69.2	-178.4	191.3					
100.0	100.0	98.7	98.7	0.1	0.1	-111.18	-69.3	-178.7	191.7	191.4	0.23	850.621		
200.0	200.0	197.4	197.4	0.3	0.2	-111.12	-69.4	-179.7	192.7	192.1	0.56	342.346		
300.0	300.0	296.1	296.0	0.6	0.3	-111.00	-69.6	-181.4	194.4	193.5	0.90	215.896		
400.0	400.0	394.7	394.7	0.8	0.5	-110.85	-70.0	-183.8	196.8	195.5	1.24	158.951		
500.0	500.0	495.0	494.9	1.0	0.6	104.78	-70.4	-186.9	200.5	198.9	1.55	129.242		
600.0	599.6	591.3	591.1	1.2	0.8	106.74	-71.4	-190.5	206.4	204.4	1.98	104.400		
700.0	698.8	694.6	694.4	1.4	1.0	109.60	-73.8	-193.1	213.6	211.2	2.43	87.772		
800.0	797.1	796.7	796.3	1.8	1.2	112.62	-79.1	-193.2	221.6	218.7	2.95	75.085		
900.0	894.3	900.8	900.2	2.2	1.4	116.53	-84.7	-191.0	230.3	226.8	3.54	65.034		
1,000.0	990.2	1,002.2	1,001.5	2.7	1.6	121.41	-88.6	-186.9	240.8	236.6	4.18	57.620		
1,100.0	1,084.4	1,099.4	1,098.5	3.3	1.8	126.72	-91.4	-181.7	254.7	249.9	4.84	52.582		
1,200.0	1,176.8	1,192.5	1,191.5	4.1	2.0	131.89	-94.1	-176.9	274.7	269.2	5.52	49.744		
1,300.0	1,267.1	1,284.9	1,283.7	4.9	2.2	136.85	-96.8	-172.3	300.9	294.7	6.19	48.597		
1,400.0	1,355.0	1,377.4	1,376.0	5.8	2.4	141.65	-99.5	-167.6	333.1	326.3	6.83	48.779		
1,500.0	1,442.3	1,474.0	1,472.4	6.8	2.7	146.24	-103.4	-161.7	367.3	359.9	7.42	49.510		
1,600.0	1,529.6	1,580.3	1,578.1	7.8	2.9	150.10	-110.7	-153.7	400.9	392.9	7.99	50.179		
1,700.0	1,616.9	1,695.0	1,691.5	8.8	3.3	153.54	-121.3	-140.0	430.9	422.3	8.54	50.470		
1,800.0	1,704.2	1,806.7	1,801.1	9.8	3.6	156.59	-132.9	-121.9	457.6	448.5	9.06	50.483		
1,900.0	1,791.6	1,922.7	1,913.9	10.8	4.1	159.42	-147.0	-98.8	481.2	471.6	9.59	50.162		
2,000.0	1,878.9	2,038.0	2,024.8	11.9	4.6	161.96	-163.7	-72.1	501.6	491.4	10.13	49.523		
2,100.0	1,966.2	2,144.0	2,125.7	12.9	5.2	164.22	-180.1	-44.1	519.4	508.7	10.66	48.722		
2,200.0	2,053.5	2,243.1	2,219.9	13.9	5.7	166.09	-196.5	-18.2	537.3	526.1	11.20	47.951		
2,300.0	2,140.8	2,356.2	2,327.0	14.9	6.4	167.96	-217.2	11.8	554.3	542.5	11.80	46.986		
2,400.0	2,228.1	2,463.1	2,427.2	16.0	7.0	169.72	-237.8	42.9	569.0	556.6	12.40	45.892		
2,500.0	2,315.4	2,574.2	2,530.6	17.0	7.8	171.51	-260.2	76.9	582.5	569.4	13.04	44.664		
2,600.0	2,402.7	2,685.9	2,633.5	18.0	8.7	173.16	-284.9	112.4	594.0	580.2	13.73	43.257		
2,700.0	2,490.0	2,787.2	2,726.3	19.0	9.4	174.67	-308.0	146.1	604.2	589.8	14.43	41.879		
2,800.0	2,577.3	2,880.7	2,811.9	20.1	10.1	176.10	-328.3	177.5	615.4	600.3	15.13	40.674		
2,900.0	2,664.6	2,979.1	2,902.3	21.1	10.8	177.44	-350.3	209.5	627.4	611.5	15.88	39.508		
3,000.0	2,751.9	3,077.5	2,992.7	22.1	11.5	178.65	-373.0	241.0	639.3	622.7	16.66	38.373		
3,100.0	2,839.2	3,174.4	3,081.9	23.1	12.3	179.82	-395.0	272.0	652.0	634.5	17.47	37.319		
3,200.0	2,926.5	3,269.9	3,169.7	24.2	13.0	-179.04	-416.4	302.7	664.9	646.6	18.31	36.313		
3,300.0	3,013.8	3,359.9	3,252.8	25.2	13.6	-178.00	-435.9	331.4	679.0	659.9	19.15	35.454		
3,400.0	3,101.1	3,452.9	3,339.1	26.2	14.3	-177.01	-455.4	360.0	694.6	674.5	20.02	34.690		
3,500.0	3,188.5	3,545.4	3,425.2	27.3	14.9	-176.19	-475.4	387.0	710.6	689.8	20.89	34.022		
3,600.0	3,275.8	3,636.8	3,510.8	28.3	15.5	-175.46	-494.5	412.7	728.2	706.4	21.75	33.480		
3,700.0	3,363.1	3,747.6	3,614.8	29.3	16.2	-174.76	-518.9	442.4	745.6	722.9	22.69	32.856		
3,800.0	3,450.4	3,863.1	3,722.0	30.3	17.1	-173.97	-546.1	475.8	760.5	736.8	23.72	32.066		
3,900.0	3,537.7	3,971.3	3,821.4	31.4	18.0	-173.10	-571.9	509.7	774.0	749.2	24.80	31.217		
4,000.0	3,625.0	4,066.0	3,908.1	32.4	18.7	-172.27	-594.3	540.7	787.1	761.3	25.85	30.446		
4,100.0	3,712.3	4,150.1	3,985.1	33.4	19.4	-171.48	-612.8	568.7	801.5	774.6	26.89	29.811		
4,200.0	3,799.6	4,234.4	4,063.0	34.5	20.0	-170.71	-630.0	596.1	818.1	790.1	27.94	29.282		
4,300.0	3,886.9	4,332.7	4,154.3	35.5	20.7	-169.93	-649.7	626.8	835.7	806.6	29.07	28.748		
4,400.0	3,974.2	4,430.4	4,245.2	36.5	21.4	-169.27	-670.2	656.1	853.2	823.0	30.17	28.279		
4,500.0	4,061.5	4,528.5	4,336.4	37.6	22.1	-168.63	-690.6	685.7	870.9	839.6	31.30	27.826		
4,600.0	4,148.8	4,627.7	4,428.5	38.6	22.9	-167.91	-710.7	716.9	888.6	856.1	32.51	27.335		
4,700.0	4,236.1	4,724.0	4,517.7	39.6	23.6	-167.20	-730.0	747.7	906.5	872.7	33.73	26.873		
4,800.0	4,323.4	4,805.5	4,593.4	40.6	24.2	-166.63	-745.6	773.4	925.4	890.6	34.84	26.562		
4,900.0	4,410.7	4,900.9	4,682.5	41.7	24.8	-166.04	-763.3	802.4	945.5	909.5	36.03	26.240		
5,000.0	4,498.0	4,990.7	4,766.9	42.7	25.4	-165.64	-780.5	827.7	966.1	929.0	37.09	26.043		
5,100.0	4,585.4	5,097.8	4,868.1	43.7	26.1	-165.29	-801.7	856.0	986.8	948.6	38.20	25.831		

CC - Min centre to center distance or convergent point, SF - min separation factor, ES - min ellipse separation

Company:	Mineral Resources Inc	Local Co-ordinate Reference:	Well MAIN Y3 6-8-31
Project:	SEC.31-T5N-R65W	TVD Reference:	WELL @ 4673.0ft (Original Well Elev)
Reference Site:	PAD Y SEC.31-T5N-R65W	MD Reference:	WELL @ 4673.0ft (Original Well Elev)
Site Error:	0.0ft	North Reference:	True
Reference Well:	MAIN Y3 6-8-31	Survey Calculation Method:	Minimum Curvature
Well Error:	0.0ft	Output errors are at	2.00 sigma
Reference Wellbore	Wellbore #1	Database:	EDM den0-adp01 Server Data
Reference Design:	Plan #6 (3-29-10)	Offset TVD Reference:	Offset Datum

Offset Design													Offset Site Error:	0.0 ft
Survey Program: 495-MWD													Offset Well Error:	0.0 ft
Reference		Offset		Semi Major Axis			Distance							Warning
Measured Depth (ft)	Vertical Depth (ft)	Measured Depth (ft)	Vertical Depth (ft)	Reference (ft)	Offset (ft)	Highside Toolface (°)	Offset Wellbore Centre +N/-S (ft)	+E/-W (ft)	Between Centres (ft)	Between Ellipses (ft)	Minimum Separation (ft)	Separation Factor		
5,200.0	4,672.7	5,194.0	4,958.4	44.8	26.8	-164.95	-821.4	882.4	1,006.5	967.3	39.28	25.623		
5,300.0	4,760.0	5,288.0	5,047.0	45.8	27.4	-164.66	-840.3	907.5	1,026.9	986.6	40.32	25.466 SF		
5,400.0	4,847.3	5,350.4	5,106.4	46.8	27.8	-164.53	-851.9	922.9	1,049.4	1,008.3	41.12	25.519		
5,500.0	4,934.6	5,425.4	5,178.4	47.9	28.2	-164.45	-864.4	939.5	1,074.6	1,032.7	41.93	25.629		
5,600.0	5,021.9	5,504.6	5,254.9	48.9	28.6	-164.42	-877.1	955.7	1,101.2	1,058.5	42.70	25.791		
5,700.0	5,109.2	5,570.0	5,318.4	49.9	28.9	-164.42	-886.5	968.4	1,129.7	1,086.3	43.40	26.032		
5,800.0	5,196.5	5,643.4	5,390.0	50.9	29.2	-164.44	-895.7	981.7	1,160.4	1,116.3	44.09	26.318		
5,900.0	5,283.8	5,712.6	5,457.9	52.0	29.5	-164.50	-903.0	992.8	1,193.4	1,148.6	44.73	26.677		
6,000.0	5,371.1	5,782.0	5,526.3	53.0	29.7	-164.61	-909.4	1,002.6	1,228.2	1,182.9	45.33	27.094		
6,100.0	5,458.4	5,852.0	5,595.5	54.0	30.0	-164.75	-914.8	1,011.4	1,265.0	1,219.1	45.89	27.563		
6,200.0	5,545.7	5,926.1	5,669.0	55.1	30.2	-164.93	-919.7	1,019.4	1,303.3	1,256.9	46.42	28.076		
6,300.0	5,633.0	5,992.6	5,735.2	56.1	30.3	-165.12	-923.5	1,025.4	1,342.9	1,296.0	46.90	28.634		
6,400.0	5,720.3	6,058.1	5,800.5	57.1	30.5	-165.35	-926.3	1,030.1	1,384.5	1,337.1	47.35	29.241		
6,500.0	5,807.6	6,134.0	5,876.1	58.2	30.6	-165.62	-928.9	1,034.5	1,427.3	1,379.5	47.76	29.882		
6,600.0	5,894.9	6,194.2	5,936.3	59.2	30.7	-165.87	-930.4	1,036.9	1,471.5	1,423.3	48.15	30.558		
6,700.0	5,982.2	6,254.3	5,996.4	60.2	30.8	-166.16	-931.3	1,037.7	1,517.5	1,469.0	48.50	31.287		
6,800.0	6,069.6	6,322.0	6,064.0	61.2	30.8	-166.60	-931.6	1,036.9	1,565.0	1,516.2	48.80	32.074		
6,900.0	6,158.2	6,412.6	6,154.7	62.0	30.9	-167.28	-931.7	1,035.1	1,611.0	1,562.0	49.00	32.878		
7,000.0	6,248.4	6,497.8	6,239.8	62.7	30.9	-167.83	-931.8	1,034.1	1,653.7	1,604.5	49.24	33.586		
7,100.0	6,340.0	6,594.4	6,336.4	63.3	31.0	-168.31	-931.6	1,033.7	1,693.4	1,643.9	49.48	34.225		
7,200.0	6,433.0	6,693.1	6,435.2	63.9	31.1	-168.72	-931.4	1,034.0	1,729.6	1,679.9	49.72	34.788		
7,300.0	6,527.2	6,783.7	6,525.8	64.5	31.2	-169.03	-931.1	1,034.7	1,762.6	1,712.7	49.95	35.286		
7,400.0	6,622.5	6,876.6	6,618.6	65.0	31.3	-169.29	-930.5	1,035.7	1,792.5	1,742.4	50.16	35.738		
7,500.0	6,718.8	6,979.8	6,721.8	65.4	31.4	-169.50	-929.9	1,036.9	1,819.1	1,768.7	50.37	36.115		
7,600.0	6,815.4	7,086.6	6,828.6	66.0	31.5	-169.61	-929.8	1,038.3	1,844.1	1,793.4	50.74	36.347		
7,700.0	6,912.0	7,182.7	6,924.7	66.5	31.6	-169.71	-929.9	1,039.8	1,868.9	1,817.8	51.10	36.573		
7,800.0	7,008.6	7,278.3	7,020.3	67.1	31.7	-169.82	-930.0	1,041.1	1,893.8	1,842.3	51.46	36.799		
7,900.0	7,105.2	7,376.8	7,118.8	67.6	31.8	-169.93	-930.1	1,042.2	1,918.7	1,866.8	51.83	37.020		
8,000.0	7,201.7	7,473.1	7,215.0	68.1	31.9	-170.03	-930.3	1,043.4	1,943.5	1,891.3	52.19	37.237		
8,065.5	7,265.0	7,538.2	7,280.2	68.5	32.0	-170.10	-930.5	1,044.2	1,959.8	1,907.3	52.44	37.375		

Company:	Mineral Resources Inc	Local Co-ordinate Reference:	Well MAIN Y3 6-8-31
Project:	SEC.31-T5N-R65W	TVD Reference:	WELL @ 4673.0ft (Original Well Elev)
Reference Site:	PAD Y SEC.31-T5N-R65W	MD Reference:	WELL @ 4673.0ft (Original Well Elev)
Site Error:	0.0ft	North Reference:	True
Reference Well:	MAIN Y3 6-8-31	Survey Calculation Method:	Minimum Curvature
Well Error:	0.0ft	Output errors are at	2.00 sigma
Reference Wellbore	Wellbore #1	Database:	EDM den0-adp01 Server Data
Reference Design:	Plan #6 (3-29-10)	Offset TVD Reference:	Offset Datum

PAD Z SEC.31-T5N-R65W - GODFREY Z5 4-4-31 - Wellbore #1 - Plan #4 (3-29-10)													Offset Site Error:	0.0 ft
Survey Program: 0-MWD													Offset Well Error:	0.0 ft
Reference		Offset		Semi Major Axis			Distance							
Measured Depth	Vertical Depth	Measured Depth	Vertical Depth	Reference	Offset	Highside Toolface	Offset Wellbore Centre		Between Centres	Between Ellipses	Minimum Separation	Separation Factor	Warning	
Depth (ft)	Depth (ft)	Depth (ft)	Depth (ft)	(ft)	(ft)	(°)	+N/-S (ft)	+E/-W (ft)	(ft)	(ft)	(ft)			
0.0	0.0	0.0	0.0	0.0	0.0	75.35	3.6	13.9	14.4	14.4	0.00	N/A		
100.0	100.0	100.0	100.0	0.1	0.1	75.35	3.6	13.9	14.4	14.2	0.22	64.082		
200.0	200.0	200.0	200.0	0.3	0.3	75.35	3.6	13.9	14.4	13.7	0.67	21.361		
300.0	300.0	300.0	300.0	0.6	0.6	75.35	3.6	13.9	14.4	13.3	1.12	12.816		
400.0	400.0	400.0	400.0	0.8	0.8	75.35	3.6	13.9	14.4	12.8	1.57	9.155		
500.0	500.0	500.0	500.0	1.0	1.0	-80.18	3.6	13.9	13.7	11.7	2.00	6.864		
537.7	537.6	537.6	537.6	1.1	1.1	-90.01	3.6	13.9	13.5	11.4	2.16	6.257 CC, ES		
600.0	599.6	599.6	599.6	1.2	1.2	-112.03	3.6	13.9	14.6	12.2	2.43	6.008 SF		
700.0	698.8	698.8	698.8	1.4	1.5	-143.58	3.6	13.9	23.0	20.1	2.89	7.955		
800.0	797.1	797.1	797.1	1.8	1.7	-159.40	3.6	13.9	39.2	35.8	3.33	11.755		
900.0	894.3	894.3	894.3	2.2	1.9	-166.89	3.6	13.9	61.6	57.8	3.78	16.311		
1,000.0	990.2	990.2	990.2	2.7	2.1	-170.87	3.6	13.9	89.5	85.3	4.22	21.196		
1,100.0	1,084.4	1,084.4	1,084.4	3.3	2.3	-173.22	3.6	13.9	122.6	118.0	4.67	26.238		
1,200.0	1,176.8	1,176.8	1,176.8	4.1	2.5	-174.72	3.6	13.9	160.7	155.6	5.13	31.351		
1,300.0	1,267.1	1,267.1	1,267.1	4.9	2.7	-175.73	3.6	13.9	203.7	198.1	5.58	36.486		
1,400.0	1,355.0	1,355.0	1,355.0	5.8	2.9	-176.47	3.6	13.9	251.1	245.1	6.06	41.471		
1,500.0	1,442.3	1,442.3	1,442.3	6.8	3.1	-177.04	3.6	13.9	299.8	293.2	6.58	45.545		
1,600.0	1,529.6	1,529.6	1,529.6	7.8	3.3	-177.45	3.6	13.9	348.5	341.4	7.12	48.947		
1,700.0	1,616.9	1,616.9	1,616.9	8.8	3.5	-177.77	3.6	13.9	397.3	389.6	7.67	51.820		
1,800.0	1,704.2	1,704.2	1,704.2	9.8	3.7	-178.01	3.6	13.9	446.0	437.8	8.22	54.273		
1,900.0	1,791.6	1,791.6	1,791.6	10.8	3.9	-178.21	3.6	13.9	494.7	486.0	8.77	56.386		
2,000.0	1,878.9	1,878.9	1,878.9	11.9	4.1	-178.37	3.6	13.9	543.5	534.1	9.33	58.224		
2,100.0	1,966.2	1,966.2	1,966.2	12.9	4.3	-178.50	3.6	13.9	592.2	582.3	9.90	59.835		
2,200.0	2,053.5	2,053.5	2,053.5	13.9	4.5	-178.62	3.6	13.9	641.0	630.5	10.46	61.257		
2,300.0	2,140.8	2,140.8	2,140.8	14.9	4.7	-178.71	3.6	13.9	689.7	678.7	11.03	62.521		
2,400.0	2,228.1	2,228.1	2,228.1	16.0	4.9	-178.80	3.6	13.9	738.5	726.9	11.60	63.650		
2,500.0	2,315.4	2,315.4	2,315.4	17.0	5.1	-178.87	3.6	13.9	787.2	775.1	12.17	64.666		
2,600.0	2,402.7	2,402.7	2,402.7	18.0	5.3	-178.94	3.6	13.9	836.0	823.2	12.75	65.582		
2,700.0	2,490.0	2,490.0	2,490.0	19.0	5.5	-179.00	3.6	13.9	884.7	871.4	13.32	66.414		
2,800.0	2,577.3	2,577.3	2,577.3	20.1	5.7	-179.05	3.6	13.9	933.5	919.6	13.90	67.171		
2,900.0	2,664.6	2,664.6	2,664.6	21.1	5.9	-179.10	3.6	13.9	982.3	967.8	14.47	67.864		
3,000.0	2,751.9	2,751.9	2,751.9	22.1	6.1	-179.14	3.6	13.9	1,031.0	1,016.0	15.05	68.499		
3,100.0	2,839.2	2,839.2	2,839.2	23.1	6.3	-179.18	3.6	13.9	1,079.8	1,064.1	15.63	69.083		
3,200.0	2,926.5	2,926.5	2,926.5	24.2	6.5	-179.21	3.6	13.9	1,128.5	1,112.3	16.21	69.623		
3,300.0	3,013.8	3,022.0	3,022.0	25.2	6.7	-179.25	3.6	14.0	1,177.2	1,160.4	16.80	70.071		
3,400.0	3,101.1	3,164.5	3,164.5	26.2	7.0	-179.19	1.3	18.0	1,223.4	1,206.0	17.45	70.127		
3,500.0	3,188.5	3,313.6	3,312.9	27.3	7.2	-178.97	-5.0	28.7	1,265.5	1,247.4	18.10	69.929		
3,600.0	3,275.8	3,468.6	3,466.5	28.3	7.6	-178.61	-15.6	47.0	1,303.2	1,284.4	18.78	69.393		
3,700.0	3,363.1	3,624.4	3,619.4	29.3	7.9	-178.10	-30.5	72.5	1,336.3	1,316.8	19.49	68.564		
3,800.0	3,450.4	3,719.1	3,712.0	30.3	8.2	-177.76	-40.7	90.0	1,367.4	1,347.3	20.11	68.009		
3,900.0	3,537.7	3,813.8	3,804.5	31.4	8.5	-177.45	-50.9	107.5	1,398.6	1,377.8	20.73	67.467		
4,000.0	3,625.0	3,908.6	3,897.1	32.4	8.8	-177.14	-61.1	125.0	1,429.7	1,408.4	21.36	66.926		
4,100.0	3,712.3	4,003.3	3,989.6	33.4	9.1	-176.85	-71.3	142.5	1,461.0	1,439.0	22.00	66.395		
4,200.0	3,799.6	4,098.1	4,082.2	34.5	9.4	-176.57	-81.5	160.0	1,492.2	1,469.6	22.65	65.872		
4,300.0	3,886.9	4,192.8	4,174.7	35.5	9.7	-176.30	-91.7	177.6	1,523.5	1,500.2	23.31	65.360		
4,400.0	3,974.2	4,287.6	4,267.3	36.5	10.0	-176.04	-101.9	195.1	1,554.8	1,530.8	23.97	64.859		
4,500.0	4,061.5	4,382.3	4,359.8	37.6	10.4	-175.79	-112.1	212.6	1,586.1	1,561.5	24.64	64.368		
4,600.0	4,148.8	4,477.0	4,452.4	38.6	10.7	-175.55	-122.3	230.1	1,617.5	1,592.2	25.32	63.890		
4,700.0	4,236.1	4,571.8	4,544.9	39.6	11.1	-175.32	-132.6	247.6	1,648.9	1,622.9	26.00	63.423		
4,800.0	4,323.4	4,666.5	4,637.5	40.6	11.5	-175.10	-142.8	265.1	1,680.3	1,653.6	26.69	62.968		
4,900.0	4,410.7	4,761.3	4,730.0	41.7	11.8	-174.89	-153.0	282.6	1,711.7	1,684.4	27.38	62.524		
5,000.0	4,498.0	4,856.0	4,822.6	42.7	12.2	-174.68	-163.2	300.1	1,743.2	1,715.1	28.07	62.093		

Company:	Mineral Resources Inc	Local Co-ordinate Reference:	Well MAIN Y3 6-8-31
Project:	SEC.31-T5N-R65W	TVD Reference:	WELL @ 4673.0ft (Original Well Elev)
Reference Site:	PAD Y SEC.31-T5N-R65W	MD Reference:	WELL @ 4673.0ft (Original Well Elev)
Site Error:	0.0ft	North Reference:	True
Reference Well:	MAIN Y3 6-8-31	Survey Calculation Method:	Minimum Curvature
Well Error:	0.0ft	Output errors are at	2.00 sigma
Reference Wellbore	Wellbore #1	Database:	EDM den0-adp01 Server Data
Reference Design:	Plan #6 (3-29-10)	Offset TVD Reference:	Offset Datum

Offset Design PAD Z SEC.31-T5N-R65W - GODFREY Z5 4-4-31 - Wellbore #1 - Plan #4 (3-29-10)												Offset Site Error:	0.0 ft
Survey Program: 0-MWD												Offset Well Error:	0.0 ft
Reference	Offset	Semi Major Axis			Distance								Warning
Measured Depth (ft)	Vertical Depth (ft)	Measured Depth (ft)	Vertical Depth (ft)	Reference (ft)	Offset (ft)	Highside Toolface (°)	Offset Wellbore Centre +N/-S (ft)	+E/-W (ft)	Between Centres (ft)	Between Ellipses (ft)	Minimum Separation (ft)	Separation Factor	
5,100.0	4,585.4	4,950.8	4,915.1	43.7	12.6	-174.48	-173.4	317.6	1,774.7	1,745.9	28.78	61.673	
5,200.0	4,672.7	5,045.5	5,007.7	44.8	13.0	-174.29	-183.6	335.2	1,806.1	1,776.7	29.48	61.264	
5,300.0	4,760.0	5,140.2	5,100.2	45.8	13.4	-174.11	-193.8	352.7	1,837.7	1,807.5	30.19	60.866	
5,400.0	4,847.3	5,229.2	5,187.1	46.8	13.7	-173.94	-203.4	369.1	1,869.2	1,838.3	30.89	60.516	
5,500.0	4,934.6	5,300.0	5,256.5	47.9	14.0	-173.82	-210.6	381.5	1,901.7	1,870.2	31.52	60.339	
5,600.0	5,021.9	5,352.6	5,308.2	48.9	14.2	-173.76	-215.4	389.7	1,935.9	1,903.8	32.08	60.346	
5,700.0	5,109.2	5,400.0	5,354.9	49.9	14.3	-173.71	-219.3	396.4	1,971.8	1,939.2	32.63	60.437	

Company: Mineral Resources Inc
Project: SEC.31-T5N-R65W
Reference Site: PAD Y SEC.31-T5N-R65W
Site Error: 0.0ft
Reference Well: MAIN Y3 6-8-31
Well Error: 0.0ft
Reference Wellbore: Wellbore #1
Reference Design: Plan #6 (3-29-10)

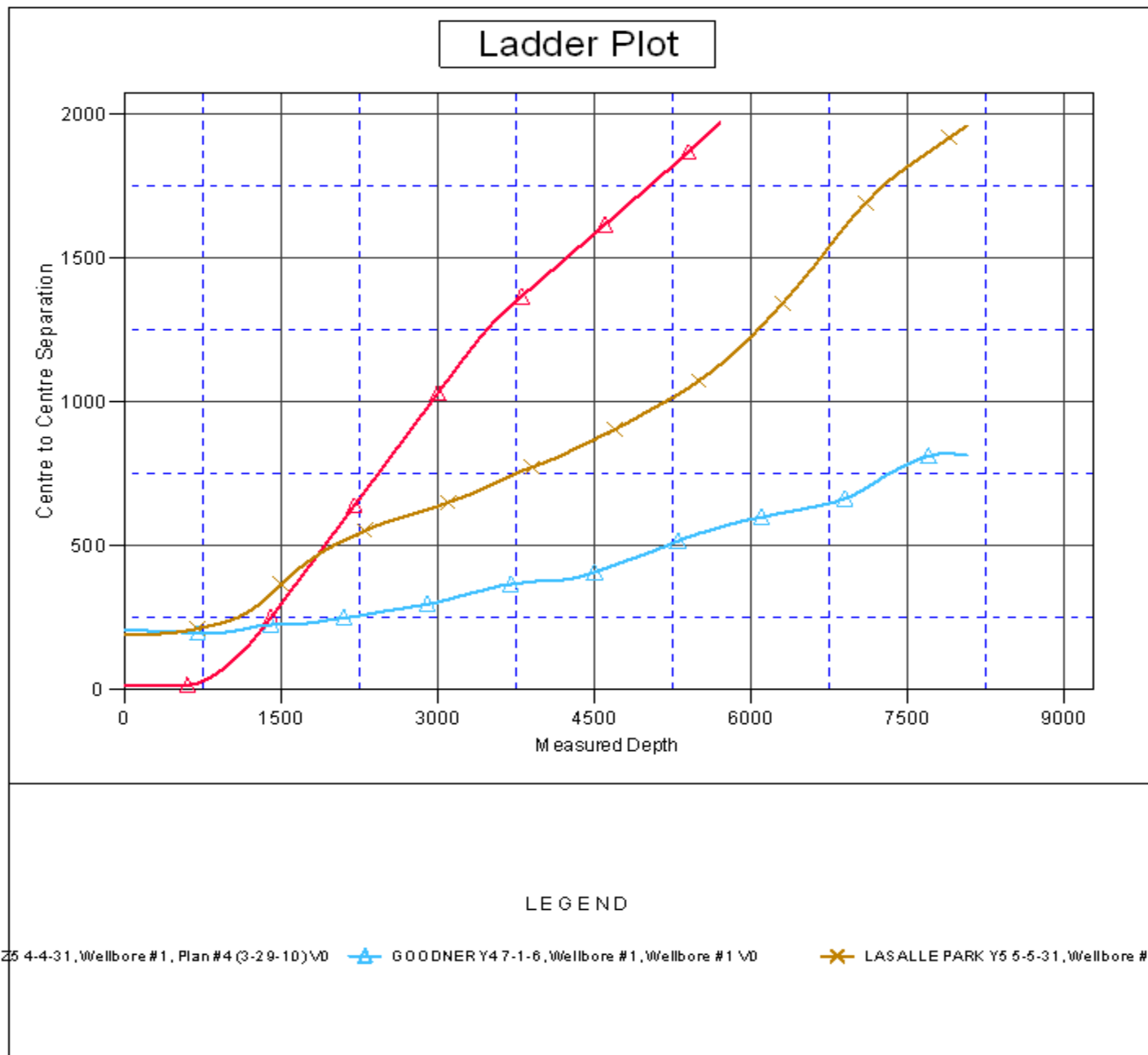
Local Co-ordinate Reference: Well MAIN Y3 6-8-31
TVD Reference: WELL @ 4673.0ft (Original Well Elev)
MD Reference: WELL @ 4673.0ft (Original Well Elev)
North Reference: True
Survey Calculation Method: Minimum Curvature
Output errors are at 2.00 sigma
Database: EDM den0-adp01 Server Data
Offset TVD Reference: Offset Datum

Reference Depths are relative to WELL @ 4673.0ft (Original Well Elev) Coordinates are relative to: MAIN Y3 6-8-31

Offset Depths are relative to Offset Datum

Coordinate System is US State Plane 1983, Colorado Northern Zone

Grid Convergence at Surface is: 0.51°

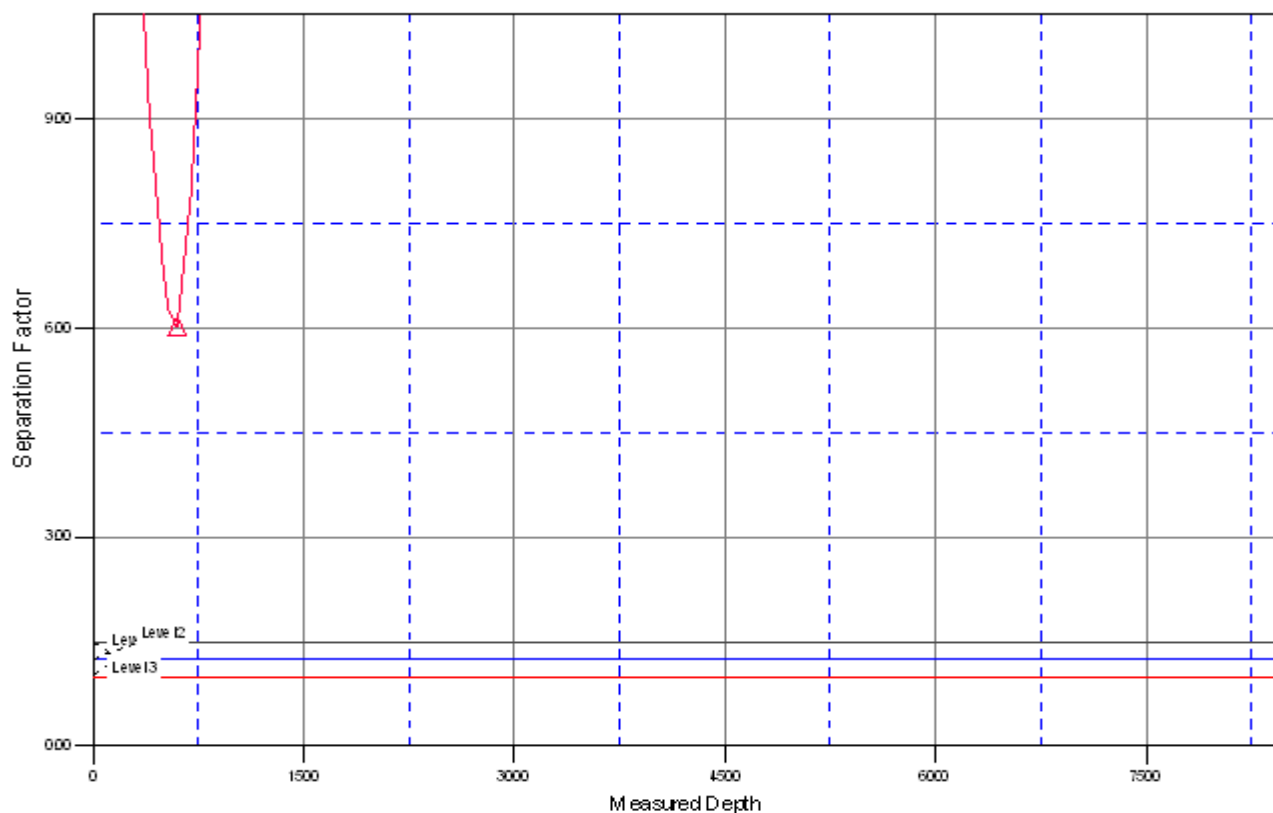


Company: Mineral Resources Inc
Project: SEC.31-T5N-R65W
Reference Site: PAD Y SEC.31-T5N-R65W
Site Error: 0.0ft
Reference Well: MAIN Y3 6-8-31
Well Error: 0.0ft
Reference Wellbore: Wellbore #1
Reference Design: Plan #6 (3-29-10)

Local Co-ordinate Reference: Well MAIN Y3 6-8-31
TVD Reference: WELL @ 4673.0ft (Original Well Elev)
MD Reference: WELL @ 4673.0ft (Original Well Elev)
North Reference: True
Survey Calculation Method: Minimum Curvature
Output errors are at 2.00 sigma
Database: EDM den0-adp01 Server Data
Offset TVD Reference: Offset Datum

Reference Depths are relative to WELL @ 4673.0ft (Original Well Elev) Coordinates are relative to: MAIN Y3 6-8-31
Offset Depths are relative to Offset Datum Coordinate System is US State Plane 1983, Colorado Northern Zone
Central Meridian is 105° 30' 0.000 W ° Grid Convergence at Surface is: 0.51°

Separation Factor Plot



LEGEND

Y25 4-4-31, Wellbore #1, Plan #4 (3-29-10) \V0  GOODNER Y4 7-1-6, Wellbore #1, Wellbore #1 \V0  LASALLE PARK Y5 5-5-31, Wellbore #1.