



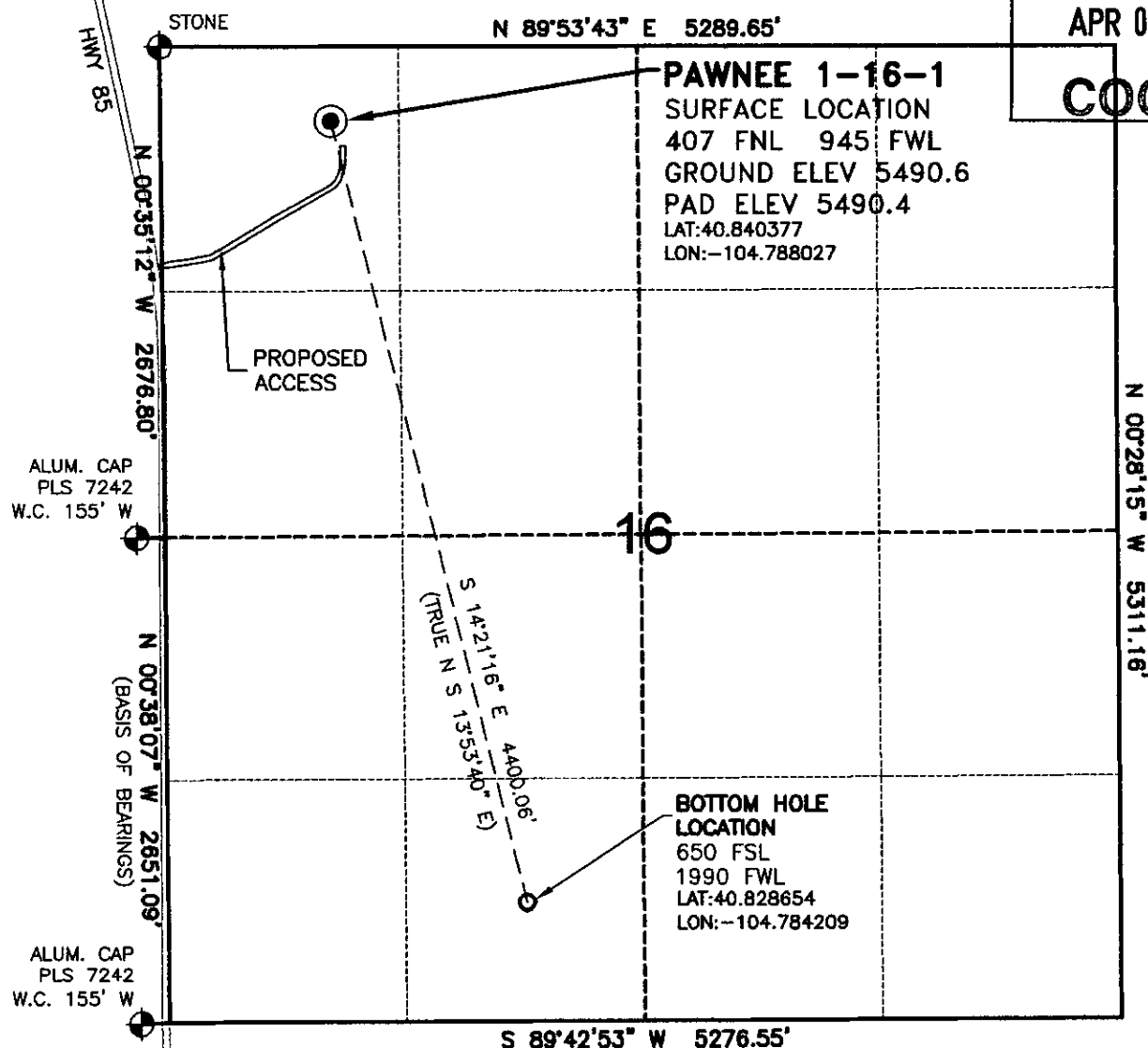
02581675

**WELL LOCATION MAP**

PAWNEE 1-16-1 PAD

**RECEIVED**

APR 08 2010

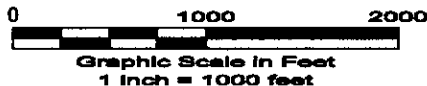
**COGCC****SURVEYOR'S STATEMENT**

The undersigned hereby states that the well location shown hereon was staked on the ground based on existing monumentation and/or physical evidence found in the field and is correct to the best of my knowledge, information and belief.

**NOTES**

- 1.) Horizontal coordinates based on NGS control point "HORA" and vertical datum based on NGS control point "P 390" with an elevation of 5199.21. NAVD 1988.
  - 2.) All directions, distances, and dimensions shown hereon are based on coordinates from the "Colorado coordinate system of 1983 north zone" (article 52 of title 38, C.R.S.).
  - 3.) All section line dimensions shown hereon are based on field measurements of existing monuments and/or physical evidence found in the field unless otherwise indicated. Refer to land survey plats deposited in Weld County.
  - 4.) Physical features shown hereon are for graphical representation only.
  - 5.) See Form 2A for visible improvements within 400' of wellhead.
  - 6.) Distances to nearest section lines are measured perpendicularly.
  - 7.) This is not a land survey nor land survey plat.
  - 8.) Date of Survey 3/8/10; Date of Drawing 3/9/10. REV 0
- PDOP Reading: 3.0 Instrument Operator: GNA

3/9/10



**RUBICON OIL & GAS LLC**  
 PAWNEE 1-16-1

SL NW1/4 NW1/4 SEC. 16 T10N R66W  
 BL SE1/4 SW1/4 SEC. 16 T10N R66W  
 6th PM WELD COUNTY COLORADO