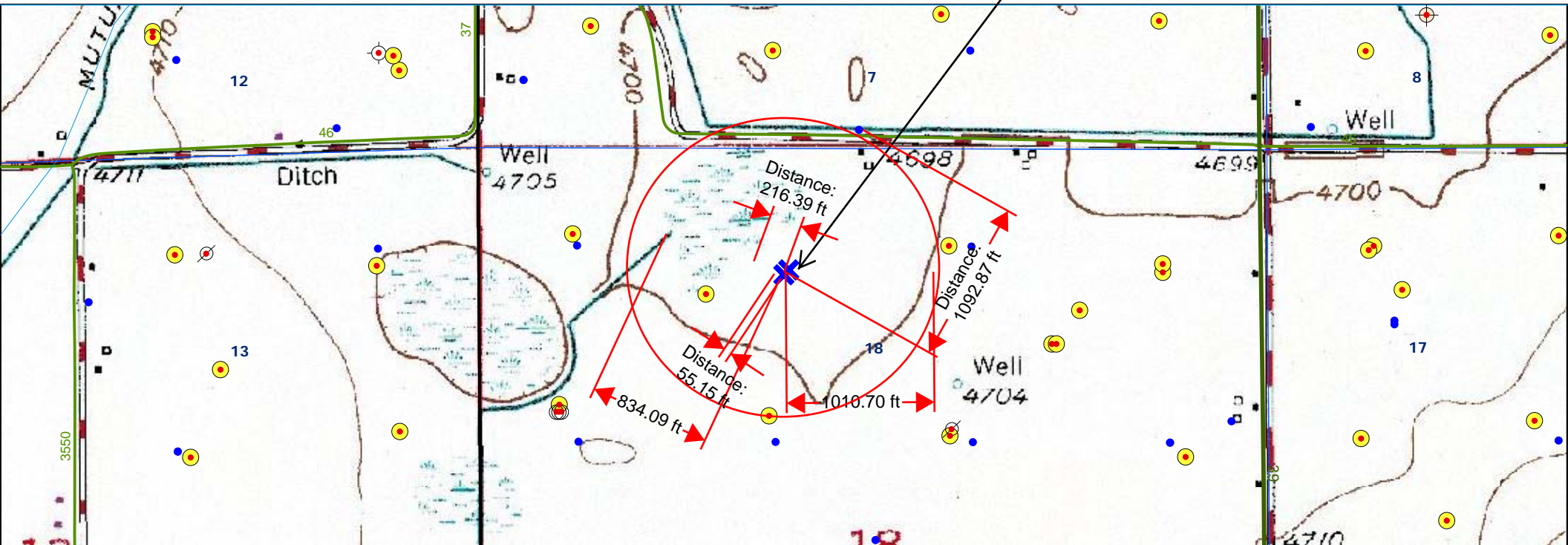
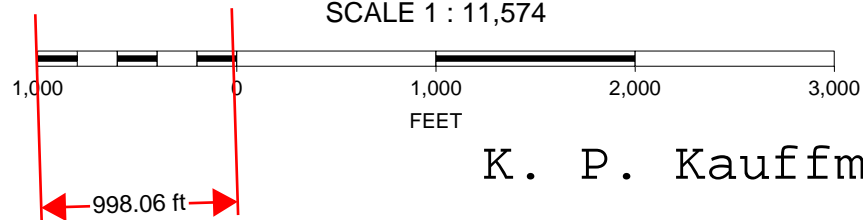


- A. North 90 degrees E 55' to top of bank irrigation pond
- B. North 5 degrees W 216' to water edge irrigation pond
- C. 834' bearing WNW to irrigation ditch
- D. water well bearing NE at 1093'

Noel #3-18



SCALE 1 : 11,574



K. P. Kauffman Company, Inc.

Hydrology map; surface waters and water wells

Noel #3-18

NENW section 18-T4N-R65W

Weld Co., Colorado