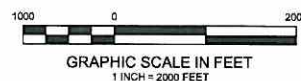
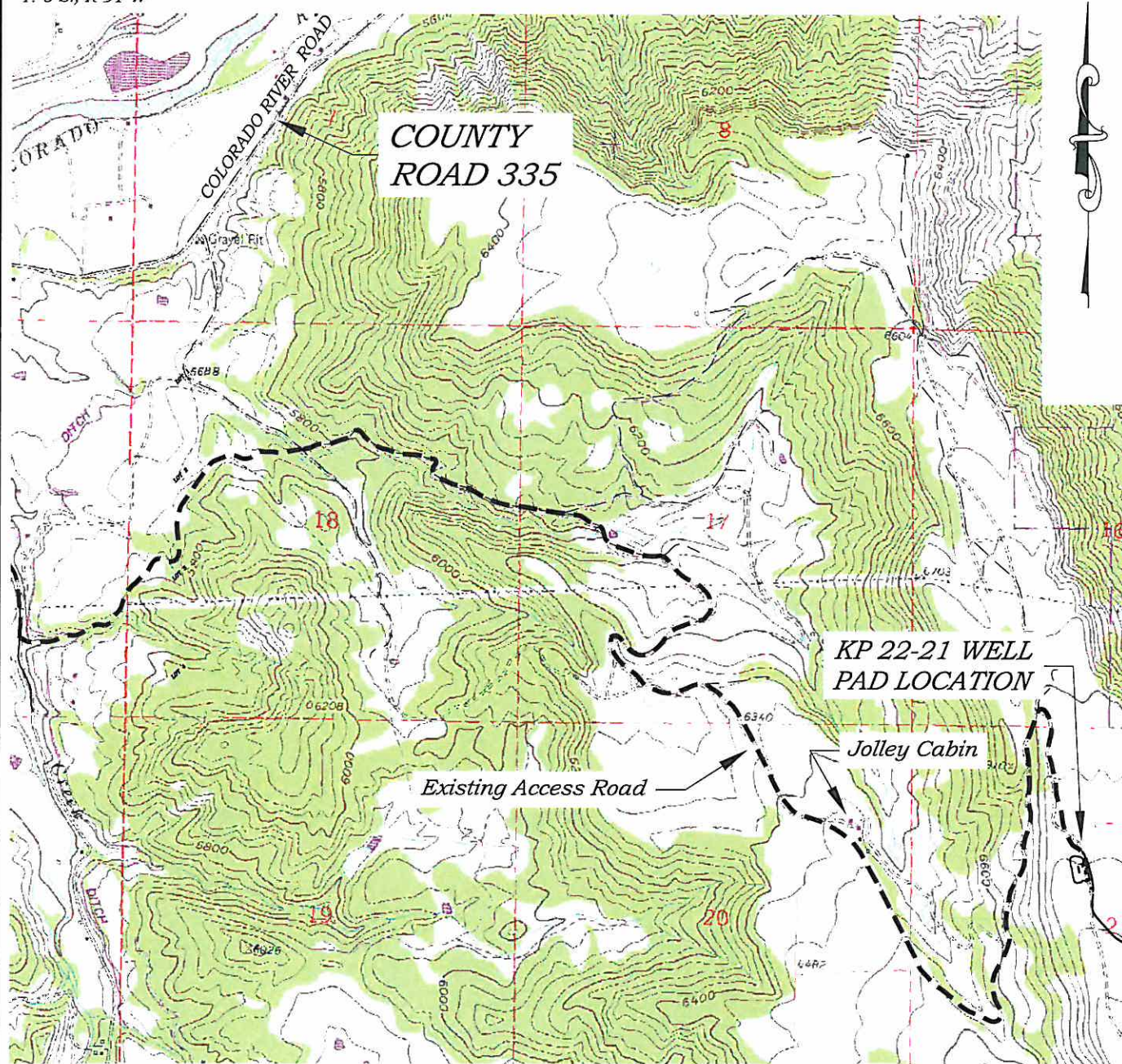


Section 21
T. 6 S., R 91 W



ACCESS DESCRIPTION: (Garfield Creek Access)

FROM THE INTERSECTION OF COLORADO INTERSTATE 70 OVERPASS (Exit 97) AND RIVER FRONTAGE ROAD SOUTH OF SILT, COLORADO, PROCEED EAST ± 0.4 MILES ALONG RIVER FRONTAGE ROAD TO THE INTERSECTION WITH COUNTY ROAD 311 (DIVIDE CREEK ROAD), PROCEED RIGHT IN A SOUTHERLY TO EASTERLY DIRECTION ± 2.0 MILES TO A 'Y' INTERSECTION WITH COUNTY ROAD 335, PROCEED RIGHT IN A SOUTHERLY DIRECTION ± 1.3 MILES TO AN INTERSECTION WITH A DIRT GRAVEL ROAD, PROCEED LEFT IN AN EASTERLY TO SOUTHERLY DIRECTION ± 5.3 MILES TO THE EXISTING KP 22-21 DRILL PAD LOCATION, AS SHOWN HEREON.

136 East Third Street
Rifle, Colorado 81650
Ph. (970) 625-1330
Fax (970) 625-2773



BOOKCLIFF
Survey Services, Inc.

SCALE: 1" = 2000'
DATE: 4/6/10
PLAT: 5 of 9
PROJECT: Williams
DFT: DPM

Construction Plan Prepared for:
Williams Williams Production, RMT

KP 22-21 Drill Pad - Plat 5
ACCESS ROAD MAP