

Steil Surveying Services, LLC

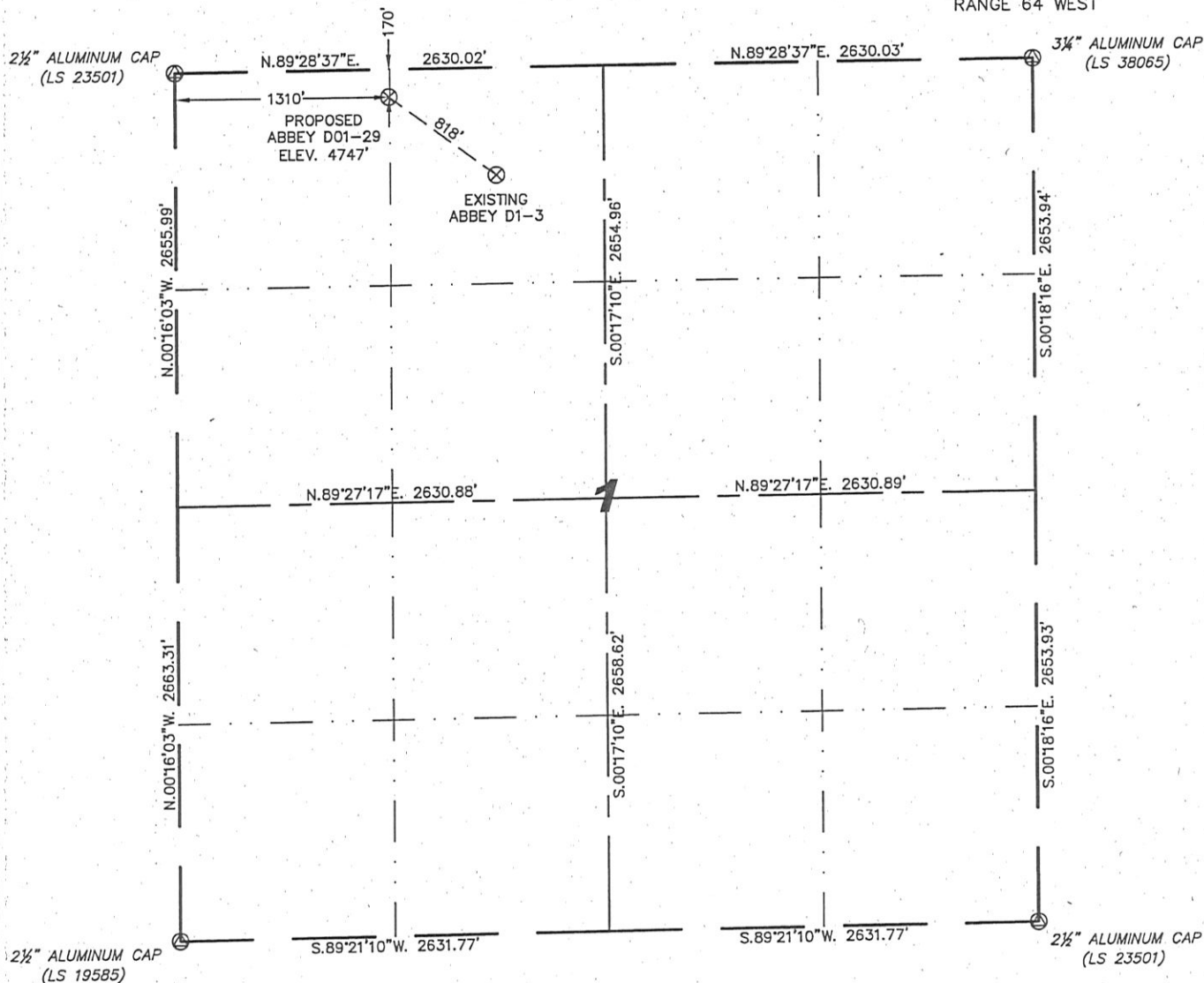
1102 West 19th Street P.O. BOX 2073

Cheyenne, Wyoming 82009

# WELL LOCATION CERTIFICATE

THIS MAP DOES NOT REPRESENT A BOUNDARY SURVEY

SECTION 1  
TOWNSHIP 3 NORTH  
RANGE 64 WEST



0 1000

Scale: 1" = 1000'

IN ACCORDANCE WITH A REQUEST FROM JOE JOHNSON - NOBLE ENERGY INC, STEIL SURVEYING SERVICES, LLC HAS DETERMINED THE LOCATION OF THE ABBEY D01-29 WELL TO BE 170' FNL, 1310' FEL, AS MEASURED AT NINETY (90) DEGREES FROM THE SECTION LINES, SECTION 1, TOWNSHIP 3 NORTH, RANGE 64 WEST, 6TH PRINCIPLE MERIDIAN, WELD COUNTY, COLORADO.

I HEREBY CERTIFY THAT THIS WELL LOCATION CERTIFICATE WAS PREPARED BY ME, OR UNDER MY DIRECT SUPERVISION, THAT THE FIELD WORK WAS COMPLETED ON 02/17/2010, FOR AND ON BEHALF OF NOBLE ENERGY INC, THAT IT IS NOT A LAND SURVEY PLAT OR AN IMPROVEMENT SURVEY PLAT, AND THAT IT IS NOT TO BE RELIED UPON FOR ESTABLISHMENT OF FENCE, BUILDING, OR OTHER FUTURE IMPROVEMENT LINES.

## NOTES:

- 1) BASIS OF BEARINGS FOR THIS MAP ARE BASED UPON GPS OBSERVATIONS MADE ON 02/17/2010 BETWEEN MONUMENTS LOCATED AT THE SOUTHEAST SECTION CORNER AND THE NORTHEAST SECTION CORNER OF SAID SECTION AND WITH ALL BEARINGS SHOWN HEREON RELATIVE THERETO.
- 2) ELEVATIONS ARE BASED UPON NGS OPUS SOLUTION NAVD 88 DATUM.
- 3) THE NEAREST EXISTING WELL IS: ABBEY D1-3, 818' SOUTHEAST.
- 4) SEE VISIBLE IMPROVEMENTS EXHIBIT FOR ALL IMPROVEMENTS WITHIN 400'.
- 5) THE LOCATION FALLS IN PASTURE LAND.

## LATITUDE & LONGITUDE (NAD 83 SURFACE HOLE):

LATITUDE: N 40.26126°  
LONGITUDE: W 104.50413°  
PDOP: 2.4  
QUARTER-QUARTER: NW/4NW/4  
NEAREST PROPERTY LINE: 170' TO THE NORTH

## LEGEND

(A) FOUND SURVEY MONUMENT PER MONUMENT RECORD - EXCEPTIONS NOTED.

(C) CALCULATED DIMENSION



Completed 03/02/2010

David C. Holmes  
Professional Land Surveyor Registration No. 32828  
State of Colorado

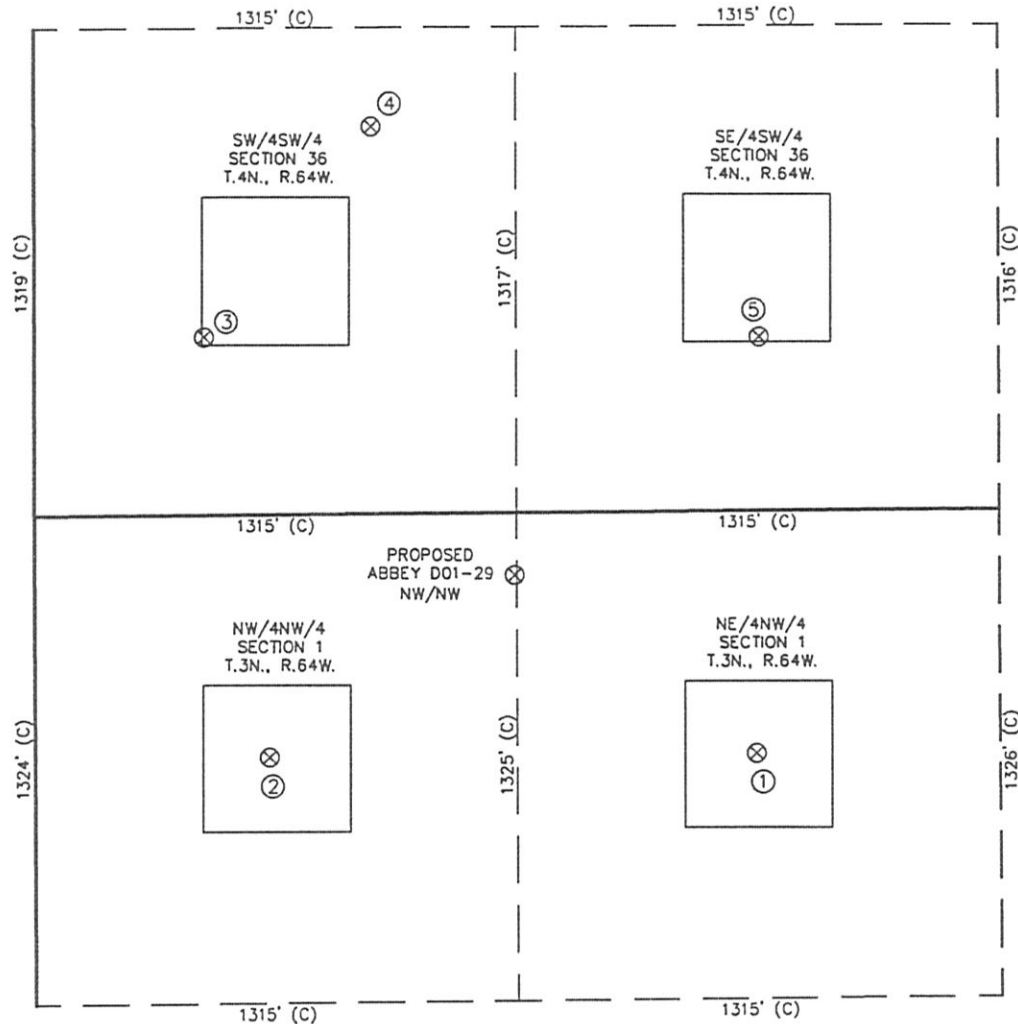
JOB #: 10086

NOTICE: According to Colorado law you MUST commence any legal action based upon any defect in this W.L.C. within three years after you first discover such defect. In no event may any action based upon any defect in this W.L.C. be commenced more than ten years from this said date of the certification shown hereon.

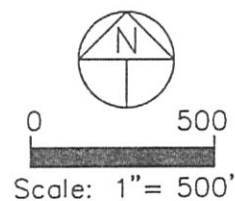
Permit through J-sand; TVD/TMD = 7500'  
S.C. @ 650' (230 sks cement)

# SITE SKETCH – ABBEY D01-29

SECTION 1  
TOWNSHIP 3 NORTH  
RANGE 64 WEST



①	②	③	④	⑤
ABBIEY D1-3 NE/NW SEC. 1 T.3N., R.64W. 661' FNL 1967' FWL EL 4745' N 40.25991 W 104.50179 PDOP 2.1	ABBIEY D1-4 NW/NW SEC. 1 T.3N., R.64W. 660' FNL 639' FWL EL 4733' N 40.25992 W 104.50655 PDOP 2.0	STATE C36-13 SW/SW SEC. 36 T.4N., R.64W. 464' FSL 463' FWL EL 4756' N 40.26306 W 104.50715 PDOP 1.9	STATE 'B' 14-36 SW/SW SEC. 36 T.4N., R.64W. 1049' FSL 918' FWL EL 4748' N 40.26461 W 104.50550 PDOP 2.0	STATE 36-1414 SE/SW SEC. 36 T.4N., R.64W. 472' FSL 1977' FWL EL 4735' N 40.26302 W 104.50172 PDOP 2.0



- NOTES:
- THIS SKETCH DOES NOT REPRESENT A BOUNDARY SURVEY.
  - THE DATUM FOR THE LATITUDES AND LONGITUDES ON THIS SKETCH IS NAD83.