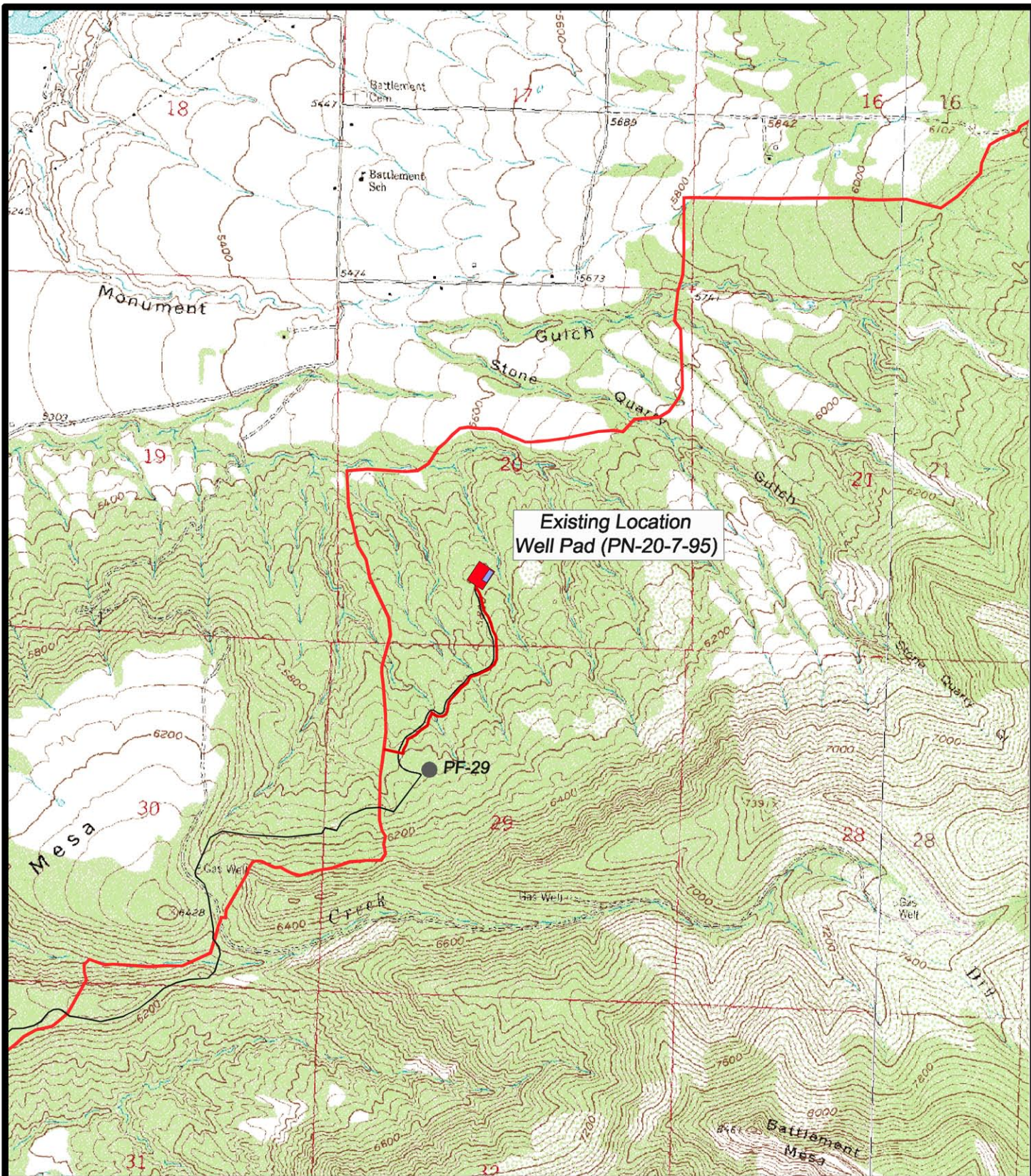


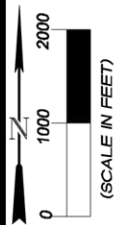


| | | | |
|--|---|--|---|
| <p>2000 1000 0 N (SCALE IN FEET)</p> | <p>EnCana Oil & Gas (USA) Inc.</p> <p>Well Pad PN-20-7-95</p> <p>Section 20, T7S, R95W, 6th P.M.</p> <p>Garfield County, Colorado</p> | <p>WASATCH SURVEYING 906 Main Street Evanston, Wyoming 82930 Phone No. (307) 789-4545</p> <p>DATE: July 1, 2008</p> <p>SCALE: 1" = 2000'</p> <p>PROJECT NO.: 05-04-73</p> | <p>—LEGEND—</p> <p> Existing Road</p> <p>Topo "B"</p> <p>SHEET 9 OF 10</p> |
| | | | |
| | | | |
| | | | |



Existing Location
Well Pad (PN-20-7-95)

PF-29



EnCana Oil & Gas (USA) Inc.

Well Pad PN-20-7-95

**Section 20, T7S, R95W, 6th P.M.
Garfield County, Colorado**



906 Main Street
Evanston, Wyoming 82930
Phone No. (307) 789-4545

DATE: July 1, 2008

SCALE: 1" = 2000'

PROJECT NO.: 05-04-73

—LEGEND—

Proposed Access

Existing Gas Line

**Topo
"C"**

**SHEET
10
OF 10**